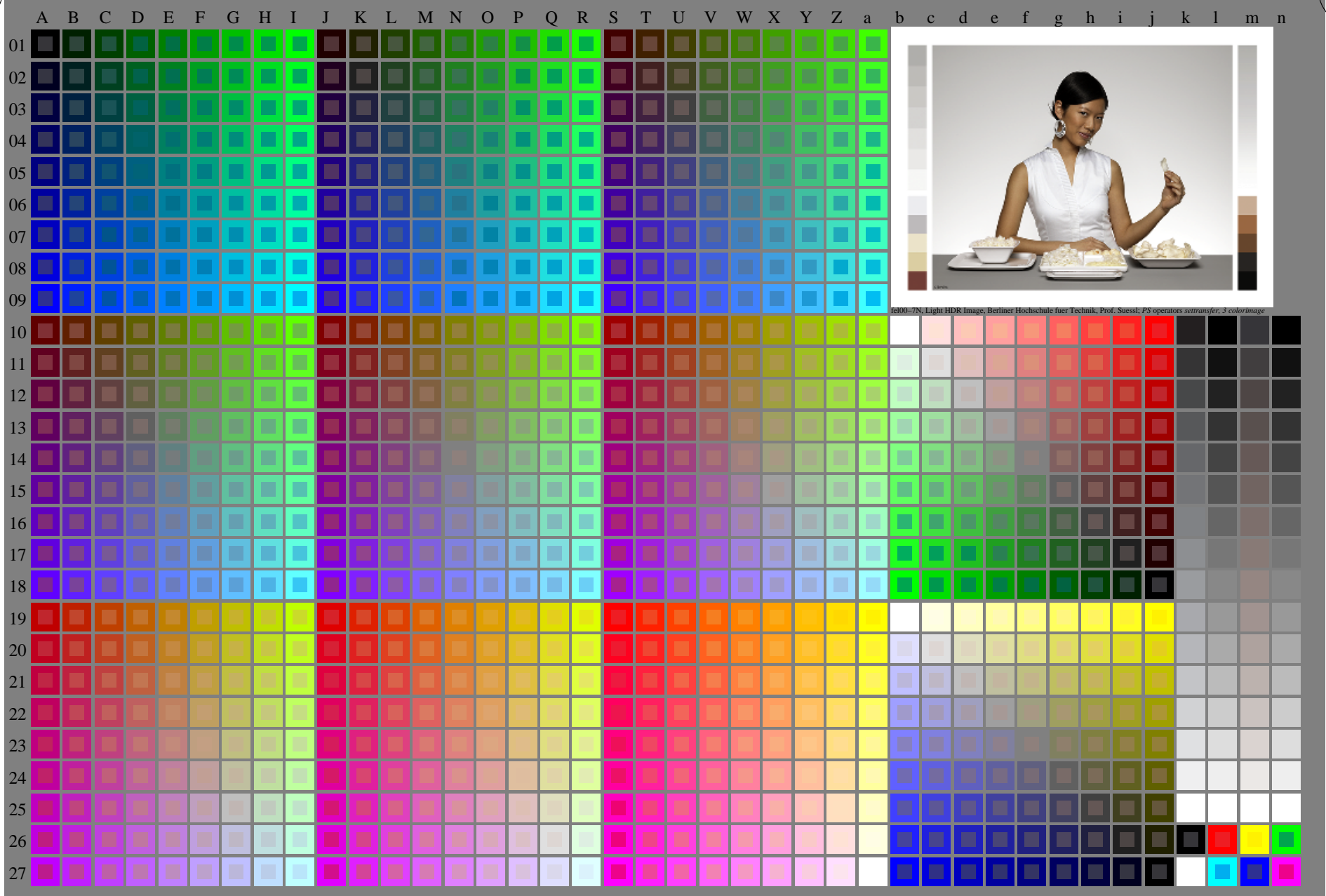


<http://farbe.li.tu-berlin.de/fel0/fel010np.pdf> /.ps; only vector graphic VG; start output see separate images of this page: <http://farbe.li.tu-berlin.de/fel0/fel0.htm>

see similar files of the whole series: <http://farbe.li.tu-berlin.de/fels.htm>  
technical information: <http://farbe.li.tu-berlin.de/A/33872E.html>  
or <http://standards.iso.org/iso/9241/306/ed-2/index.html>



TUB registration: 20240301-fel0/fel010np.pdf /.ps  
application for evaluation and measurement of display or print output  
TUB material: code=rh4ta

fel00-7N, Page 1/16, Test chart 2G with 40x27=1080 colours; digital equidistant 9 or 16 step colour scales; Colour data in column (A-n): rgb + cmy0 (A\_j + k26\_n27), 000n (k), w (l), nnn0 (m), www (n), colorm = 0, xchart = 0, pchart = 0

TUB-test chart fel0; fel0: Test chart wh\_d10 with 40x27=1080 colours; DH  
Digital equidistant 9 or 16 step colour scales, L-HDR;  $\gamma_R=1,0$

000n/w/cmy0/rgb  
->rgb\*\_d, 030-0:

