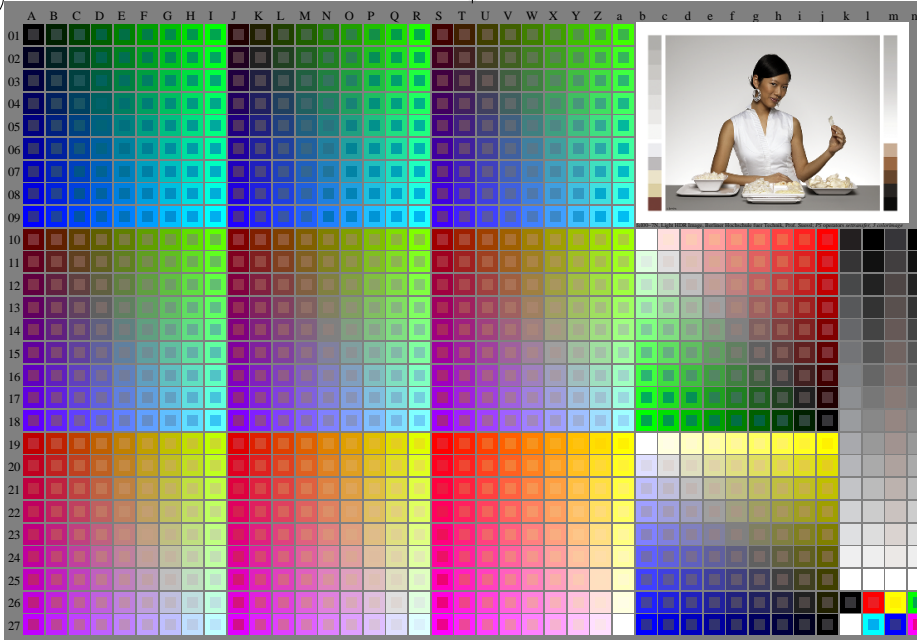


<http://farbe.li.tu-berlin.de/fel0/fel0l0n1.txt> /ps; only vector graphic VG; start output
see separate images of this page: <http://farbe.li.tu-berlin.de/fel0/fel0.htm>

see similar files of the whole serie: <http://farbe.li.tu-berlin.de/fels.htm>
technical information: <http://farbe.li.tu-berlin.de/A33872E.html>
or <http://standards.iso.org/iso/9241/3006/ed-2/index.html>

TUB registration: 20240301-fel0/fel0l0n1.txt /ps
application for evaluation and measurement of display or print output
TUB material: code=thadta



fel00-7N, Page 1/16, Test chart 2G with 40x27=1080 colours; digital equidistant 9 or 16 step colour scales; Colour data in column (A-n): $rgb + cmy0(A, j + k26_n27)$, 000n (k), w (l), nm0 (m), www (n), column = 0, xchart = 0, pchart = 0

TUB-test chart fel0; fel0: Test chart wh_d10 with 40x27=1080 colours; DH
Digital equidistant 9 or 16 step colour scales, L-HDR; $\gamma_R=1,0$

000n/w/cmy0/rgb
->rgb*d, 030-0: