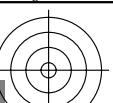
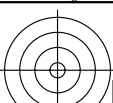


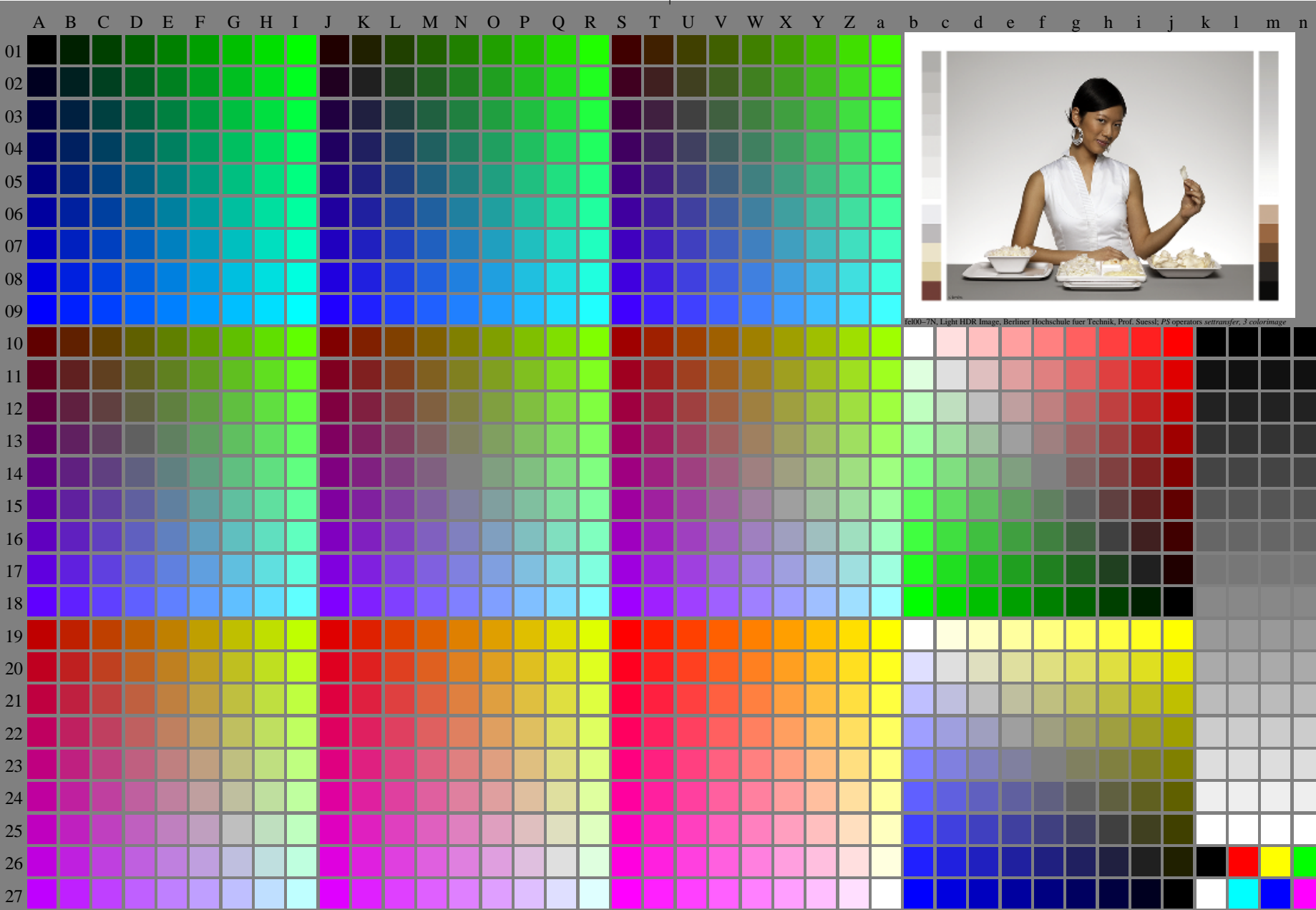
<http://farbe.li.tu-berlin.de/fel0/fel010fa.txt> /.ps; only vector graphic VG; start output
see separate images of this page: <http://farbe.li.tu-berlin.de/fel0/fel0.htm>



see similar files of the whole serie: <http://farbe.li.tu-berlin.de/fels.htm>
technical information: <http://farbe.li.tu-berlin.de/A/33872E.html>
or <http://standards.iso.org/iso/9241/306/ed-2/index.html>

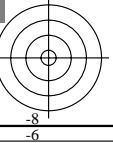
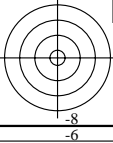
TUB registration: 20240301-fel0/fel010fa.txt /.ps
application for evaluation and measurement of display or print output

TUB material: code=rh4ta

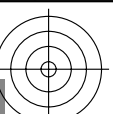
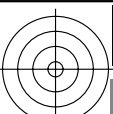


fel00-7N, Page 1/16, Test chart 2G with 40x27=1080 colours; digital equidistant 9 or 16 step colour scales; Colour data in column (A-n): rgb*(A_n), colorm = 1, xchart = 0, pchart = 0

TUB-test chart fel0; fel0: Test chart wh_d10 with 40x27=1080 colours; 1MR, DH 000n/w/cmy0/rgb
Digital equidistant 9 or 16 step colour scales, L-HDR; $\gamma_R=1,0$
->rgb*_d, 130-0:



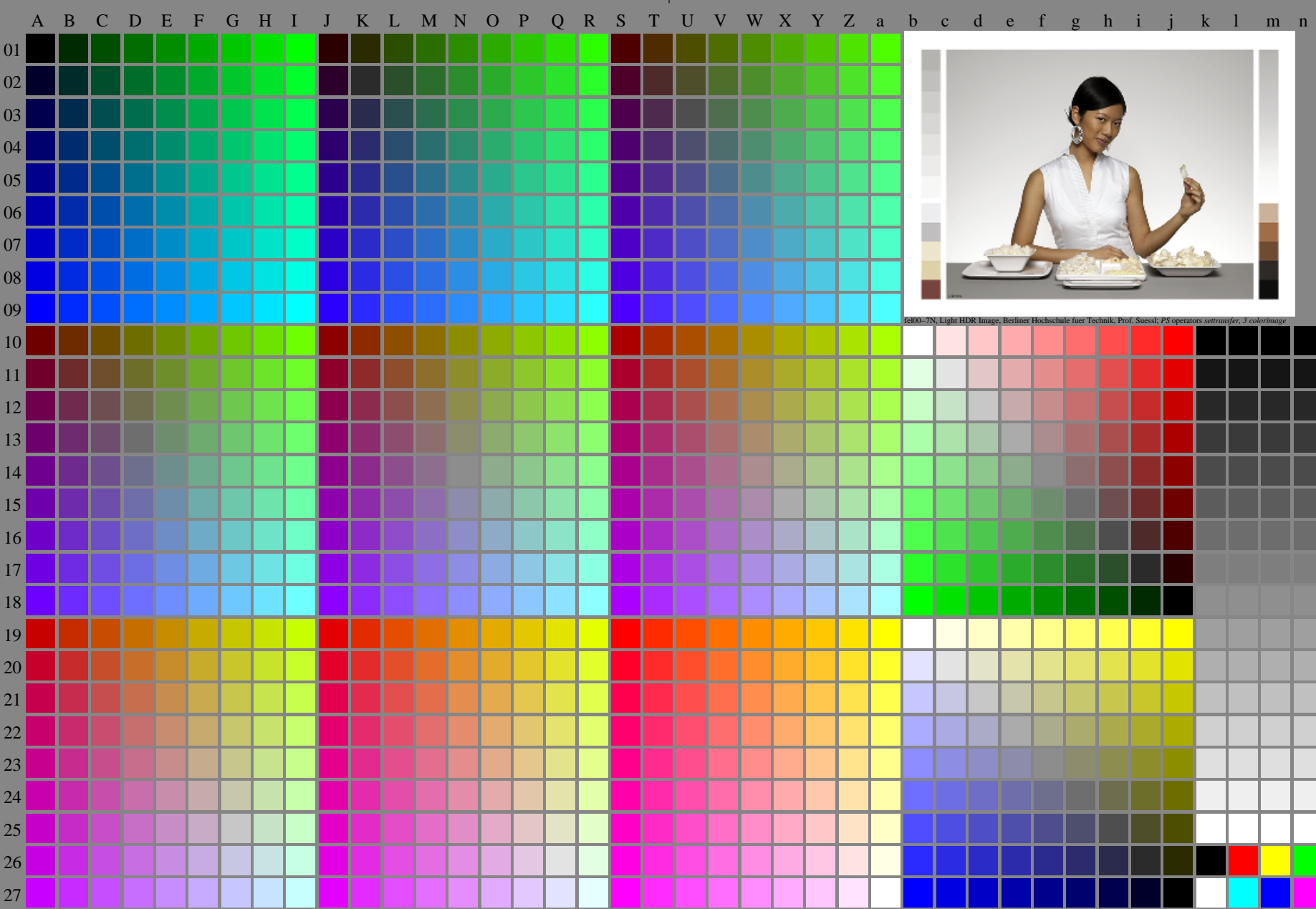
<http://farbe.li.tu-berlin.de/fel0/fel010fa.txt> /.ps; only vector graphic VG;
see separate images of this page: <http://farbe.li.tu-berlin.de/fel0/fel0.htm>



see similar files of the whole series: <http://farbe.li.tu-berlin.de/fels.htm>
technical information: <http://farbe.li.tu-berlin.de/A/33872E.html>
or <http://standards.iso.org/iso/9241/306/ed-2/index.html>

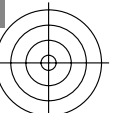
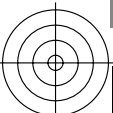
TUB registration: 20240301-fel0/fel010fa.txt /.ps
application for evaluation and measurement of display or print output

TUB material: code=rh4ta

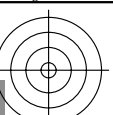
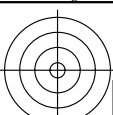


fel00-7N, Page 1/16, Test chart 2G with 40x27=1080 colours; digital equidistant 9 or 16 step colour scales; Colour data in column (A-n): $rgb^*(A_n)$, $colorm = 1$, $xchart = 1$, $pchart = 0$

TUB-test chart fel0; fel0: Test chart wh_d10 with 40x27=1080 colours; 1MR, DH 000n/w/cmy0/rgb
Digital equidistant 9 or 16 step colour scales, L-HDR; $\gamma_R=1,0$
 $\rightarrow rgb^*_d, 131-0:$



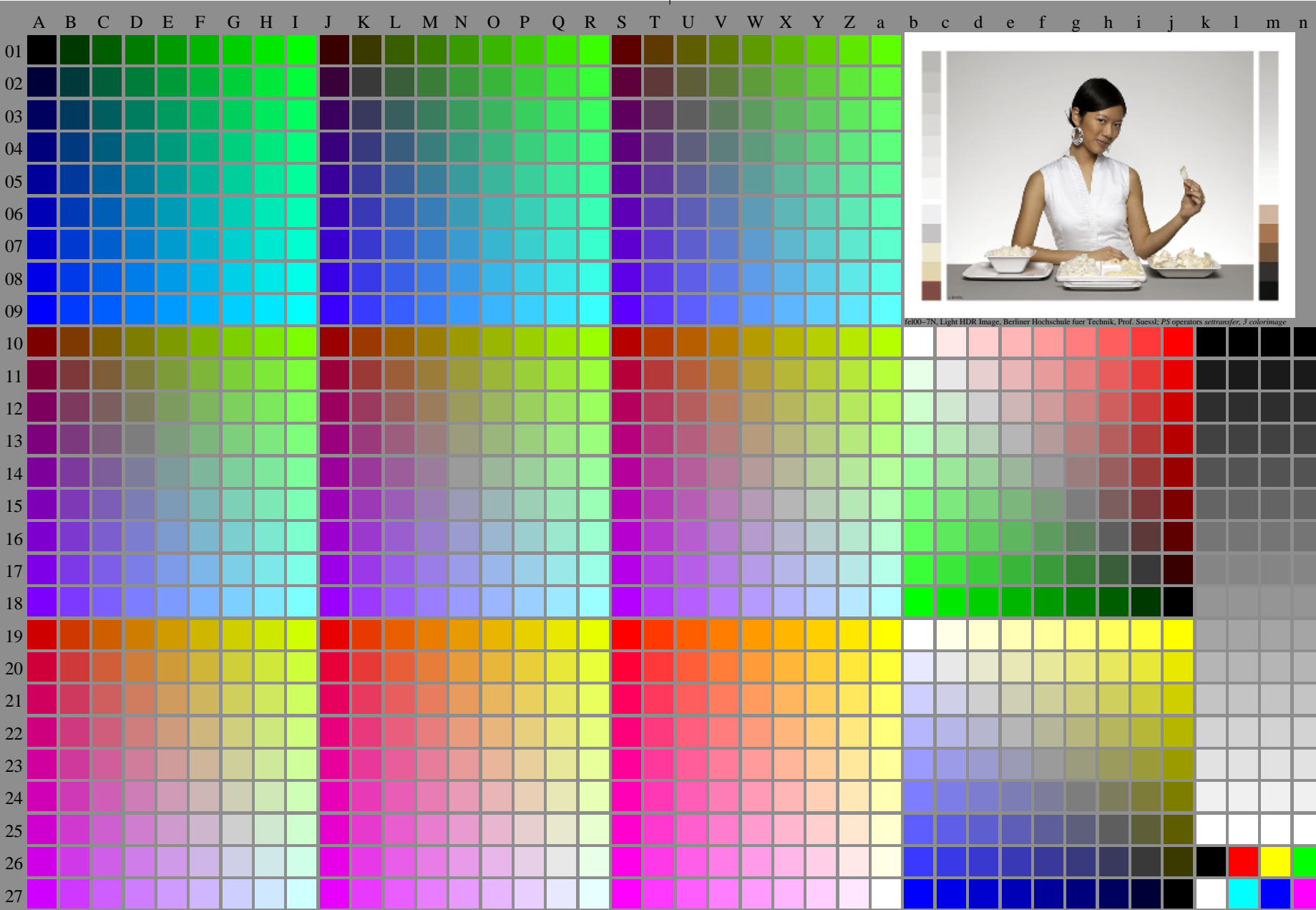
<http://farbe.li.tu-berlin.de/fel0/fel010fa.txt> /.ps; only vector graphic VG;
see separate images of this page: <http://farbe.li.tu-berlin.de/fel0/fel0.htm>



see similar files of the whole serie: <http://farbe.li.tu-berlin.de/fels.htm>
technical information: <http://farbe.li.tu-berlin.de/A/33872E.html>
or <http://standards.iso.org/iso/9241/306/ed-2/index.html>

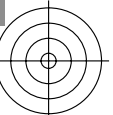
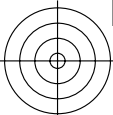
TUB registration: 20240301-fel0/fel010fa.txt /.ps
application for evaluation and measurement of display or print output

TUB material: code=rh4ta

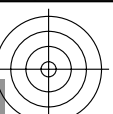
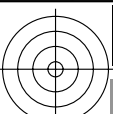


fel00-7N, Page 1/16, Test chart 2G with 40x27=1080 colours; digital equidistant 9 or 16 step colour scales; Colour data in column (A-n): $rgb^* (A_n)$, colorm = 1, xchart = 2, pchart = 0

TUB-test chart fel0; fel0: Test chart wh_d10 with 40x27=1080 colours; 1MR, DH 000n/w/cmy0/rgb
Digital equidistant 9 or 16 step colour scales, L-HDR; $\gamma_R=1,0$
→ $rgb^*_d, 132-0$



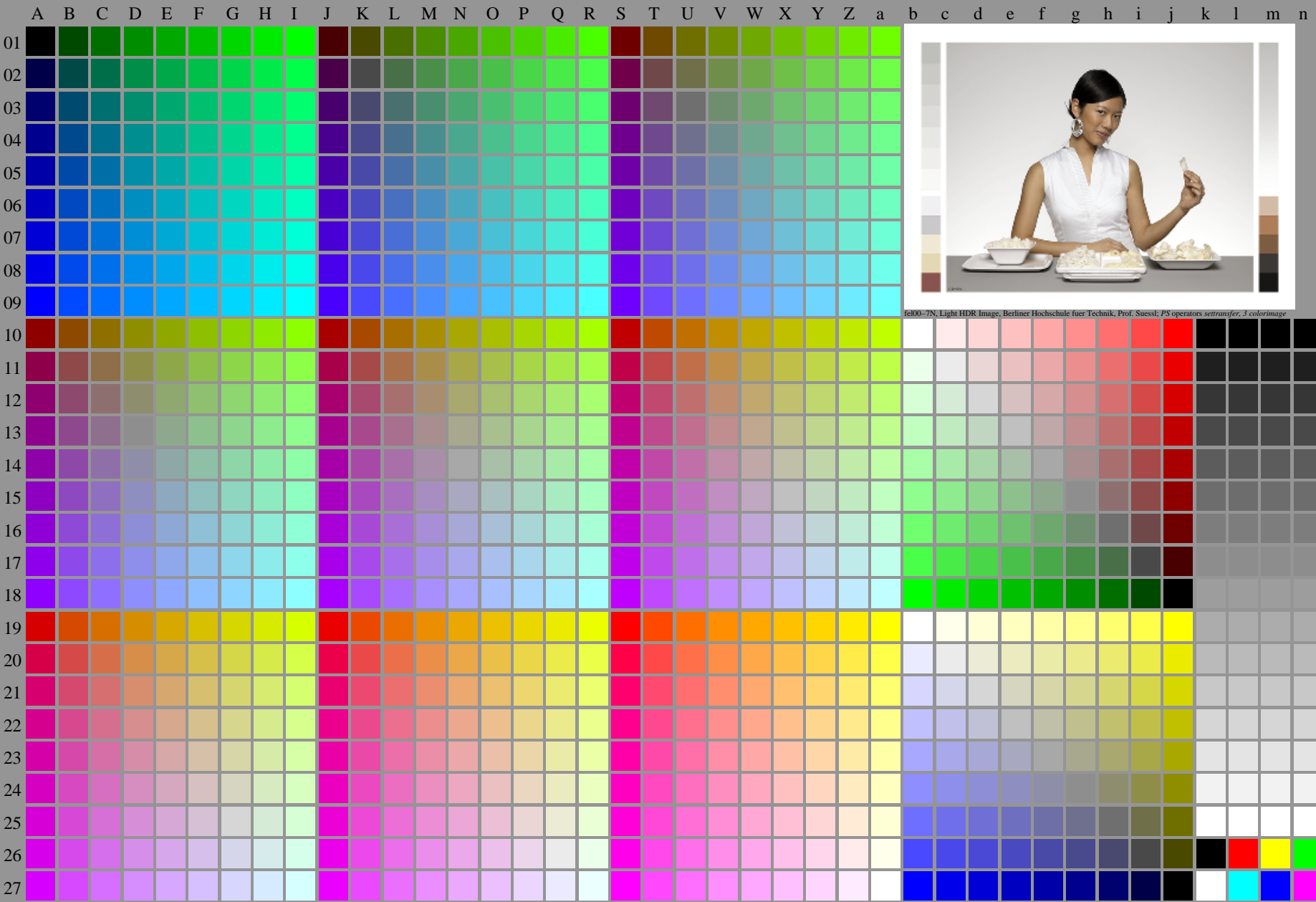
<http://farbe.li.tu-berlin.de/fel0/fel010fa.txt> /.ps; only vector graphic VG;
see separate images of this page: <http://farbe.li.tu-berlin.de/fel0/fel0.htm>



see similar files of the whole series: <http://farbe.li.tu-berlin.de/fels.htm>
technical information: <http://farbe.li.tu-berlin.de/A/33872E.html>
or <http://standards.iso.org/iso/9241/306/ed-2/index.html>

TUB registration: 20240301-fel0/fel010fa.txt /.ps
application for evaluation and measurement of display or print output

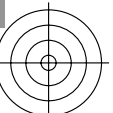
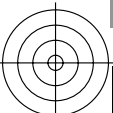
TUB material: code=rh4ta



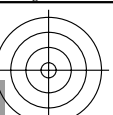
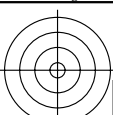
fel00-7N, Light HDR Image, Berliner Hochschule fuer Technik, Prof. Suessi; PS operators settransfer, 3 colorimage

fel00-7N, Page 1/16, Test chart 2G with 40x27=1080 colours; digital equidistant 9 or 16 step colour scales; Colour data in column (A-n): $rgb^* (A_n)$, colorm = 1, xchart = 3, pchart = 0

TUB-test chart fel0; fel0: Test chart wh_d10 with 40x27=1080 colours; 1MR, DH 000n/w/cmy0/rgb
Digital equidistant 9 or 16 step colour scales, L-HDR; $\gamma_R=1,0$
→ $rgb^*_d, 133-0$



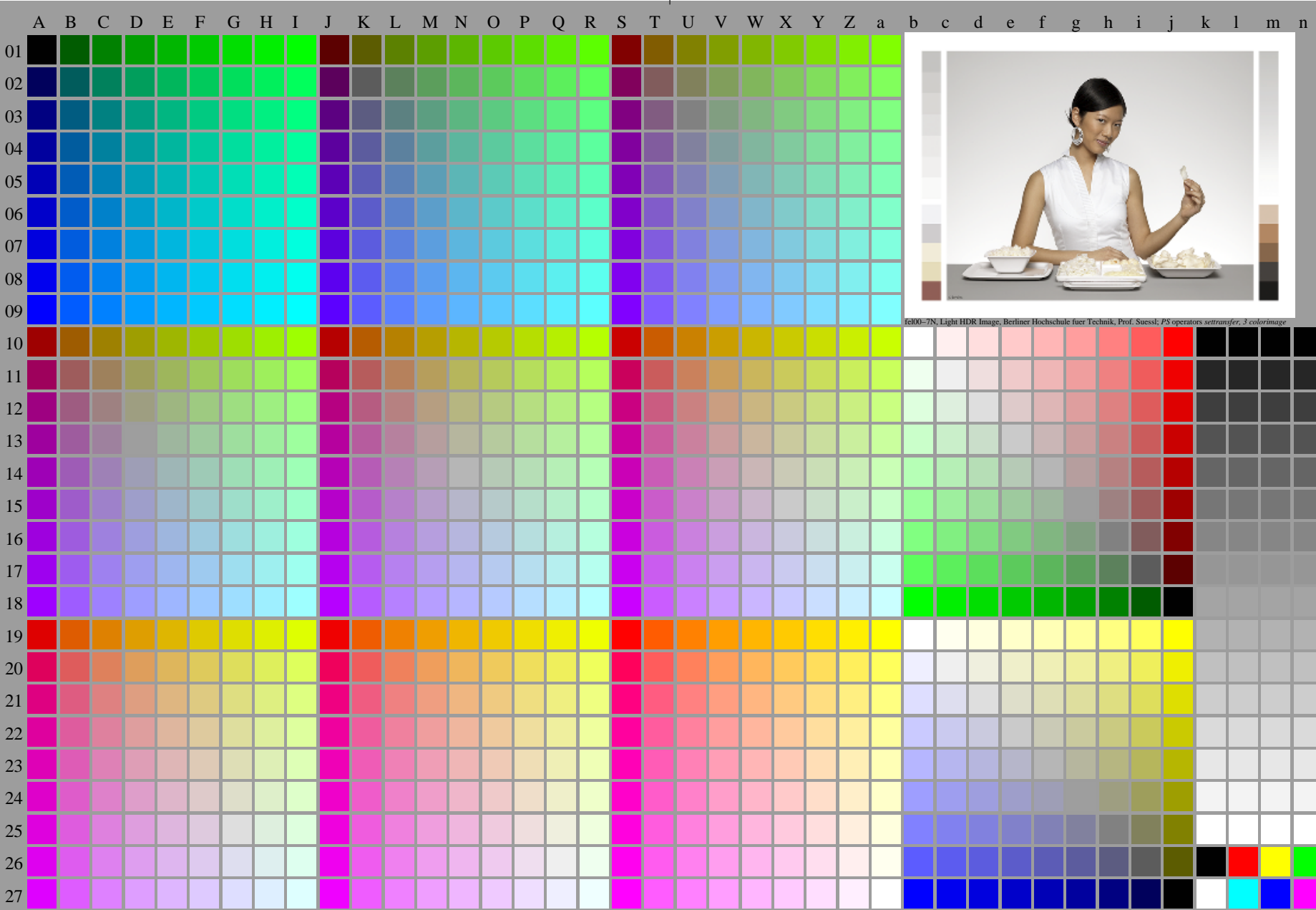
<http://farbe.li.tu-berlin.de/fel0/fel010fa.txt> /.ps; only vector graphic VG;
see separate images of this page: <http://farbe.li.tu-berlin.de/fel0/fel0.htm>



see similar files of the whole serie: <http://farbe.li.tu-berlin.de/fels.htm>
technical information: <http://farbe.li.tu-berlin.de/A/33872E.html>
or <http://standards.iso.org/iso/9241/306/ed-2/index.html>

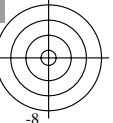
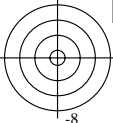
TUB registration: 20240301-fel0/fel010fa.txt /.ps
application for evaluation and measurement of display or print output

TUB material: code=rh4ta

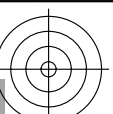
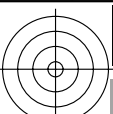


fel00-7N, Page 1/16, Test chart 2G with 40x27=1080 colours; digital equidistant 9 or 16 step colour scales; Colour data in column (A-n): $rgb^*(A_n)$, colorm = 1, xchart = 4, pchart = 0

TUB-test chart fel0; fel0: Test chart wh_d10 with 40x27=1080 colours; 1MR, DH 000n/w/cmy0/rgb
Digital equidistant 9 or 16 step colour scales, L-HDR; $\gamma_R=1,0$
-> rgb^*_d , 134-0:



<http://farbe.li.tu-berlin.de/fel0/fel010fa.txt> /.ps; only vector graphic VG;
see separate images of this page: <http://farbe.li.tu-berlin.de/fel0/fel0.htm>



see similar files of the whole serie: <http://farbe.li.tu-berlin.de/fels.htm>
technical information: <http://farbe.li.tu-berlin.de/A/33872E.html>
or <http://standards.iso.org/iso/9241/306/ed-2/index.html>

TUB registration: 20240301-fel0/fel010fa.txt /.ps
application for evaluation and measurement of display or print output

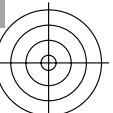
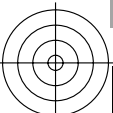
TUB material: code=rh4ta



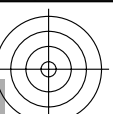
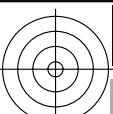
fel00-7N, Light HDR Image, Berliner Hochschule fuer Technik, Prof. Suessi; PS operators settransfer, 3 colorimage

fel00-7N, Page 1/16, Test chart 2G with 40x27=1080 colours; digital equidistant 9 or 16 step colour scales; Colour data in column (A-n): $rgb^*(A_n)$, colorm = 1, xchart = 5, pchart = 0

TUB-test chart fel0; fel0: Test chart wh_d10 with 40x27=1080 colours; 1MR, DH 000n/w/cmy0/rgb
Digital equidistant 9 or 16 step colour scales, L-HDR; $\gamma_R=1,0$
-> $rgb^*_d, 135-0$



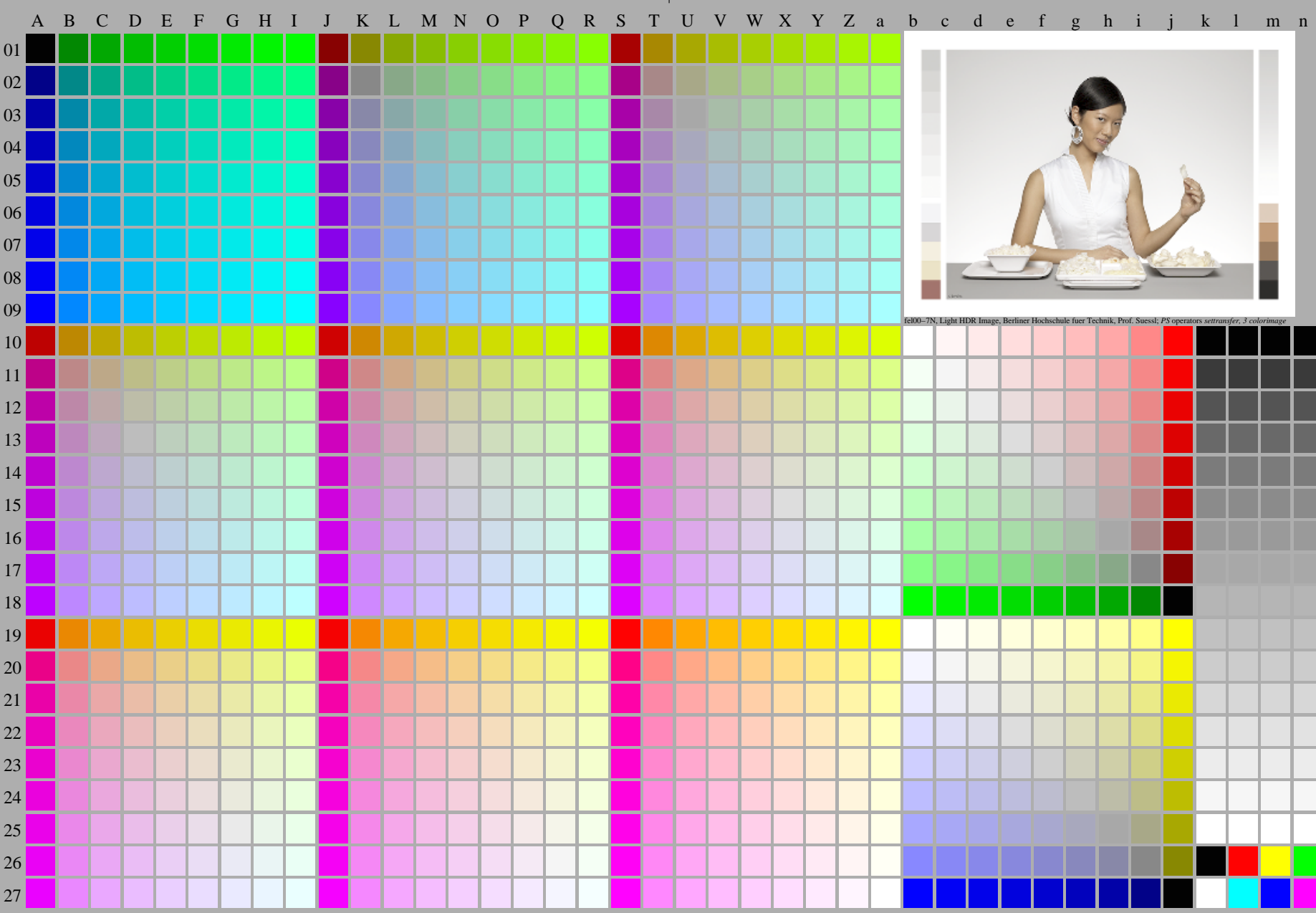
<http://farbe.li.tu-berlin.de/fel0/fel010fa.txt> /.ps; only vector graphic VG;
see separate images of this page: <http://farbe.li.tu-berlin.de/fel0/fel0.htm>



see similar files of the whole serie: <http://farbe.li.tu-berlin.de/fels.htm>
technical information: <http://farbe.li.tu-berlin.de/A/33872E.html>
or <http://standards.iso.org/iso/9241/306/ed-2/index.html>

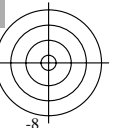
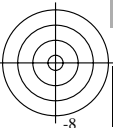
TUB registration: 20240301-fel0/fel010fa.txt /.ps
application for evaluation and measurement of display or print output

TUB material: code=rh4ta

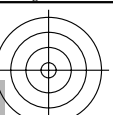
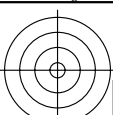


fel00-7N, Page 1/16, Test chart 2G with 40x27=1080 colours; digital equidistant 9 or 16 step colour scales; Colour data in column (A-n): $rgb^*_d(A_n)$, $colorm = 1$, $xchart = 6$, $pchart = 0$

TUB-test chart fel0; fel0: Test chart wh_d10 with 40x27=1080 colours; 1MR, DH 000n/w/cmy0/rgb
Digital equidistant 9 or 16 step colour scales, L-HDR; $\gamma_R=1,0$
-> rgb^*_d , 136-0:



<http://farbe.li.tu-berlin.de/fel0/fel010fa.txt> /.ps; only vector graphic VG;
see separate images of this page: <http://farbe.li.tu-berlin.de/fel0/fel0.htm>



see similar files of the whole serie: <http://farbe.li.tu-berlin.de/fels.htm>
technical information: <http://farbe.li.tu-berlin.de/A/33872E.html>
or <http://standards.iso.org/iso/9241/306/ed-2/index.html>

TUB registration: 20240301-fel0/fel010fa.txt /.ps
application for evaluation and measurement of display or print output

TUB material: code=rh4ta



fel00-7N, Page 1/16, Test chart 2G with 40x27=1080 colours; digital equidistant 9 or 16 step colour scales; Colour data in column (A-n): $rgb^* (A_n)$, $colorm = 1$, $xchart = 7$, $pchart = 0$

TUB-test chart fel0; fel0: Test chart wh_d10 with 40x27=1080 colours; 1MR, DH 000n/w/cmy0/rgb
Digital equidistant 9 or 16 step colour scales, L-HDR; $\gamma_R=1,0$
 $\rightarrow rgb^*_d, 137-0:$

