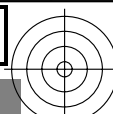
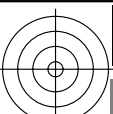


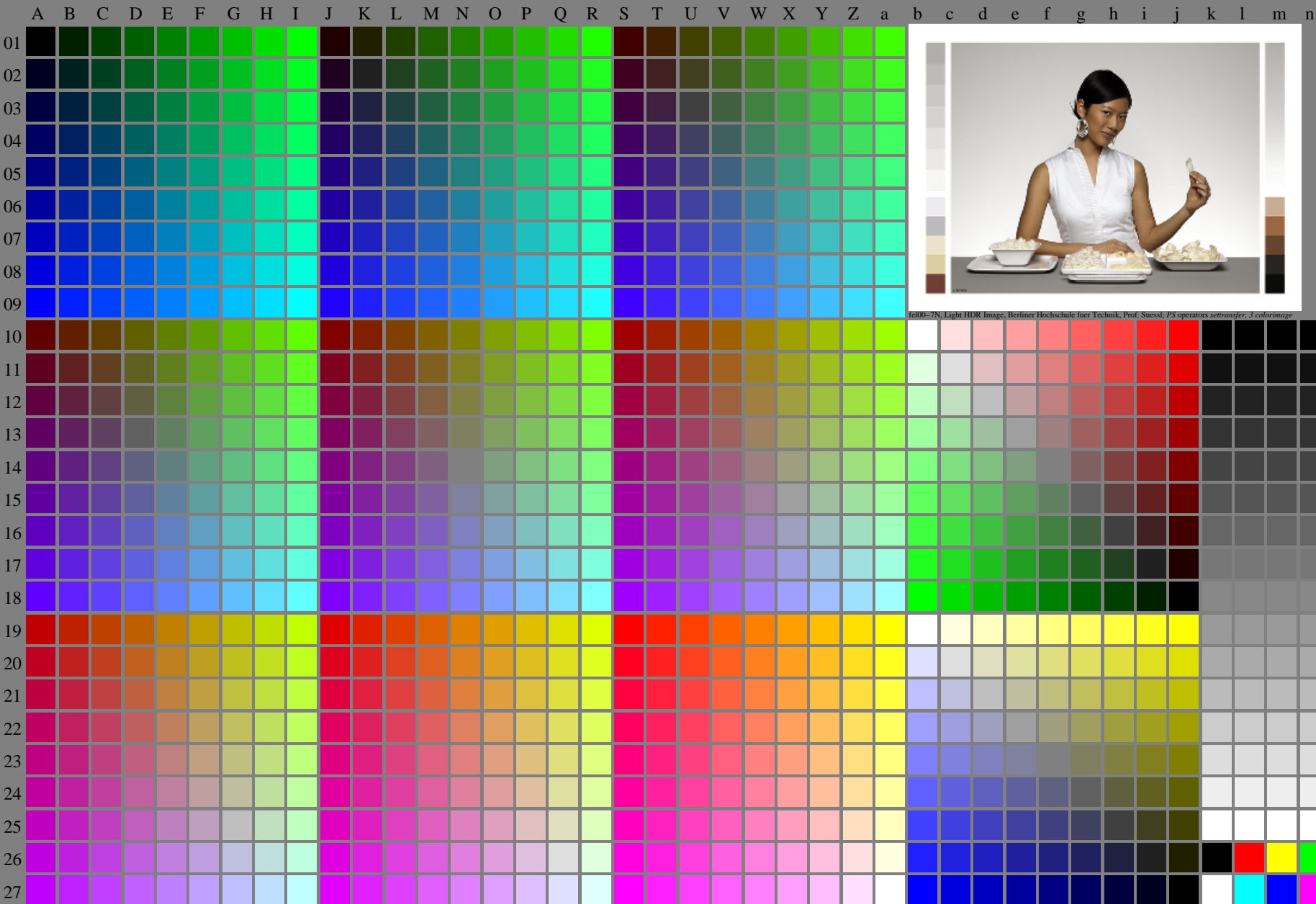
<http://farbe.li.tu-berlin.de/fel0/fel010fa.txt> /.ps; only vector graphic VG; start output
see separate images of this page: <http://farbe.li.tu-berlin.de/fel0/fel0.htm>



see similar files of the whole serie: <http://farbe.li.tu-berlin.de/fels.htm>
technical information: <http://farbe.li.tu-berlin.de/A/33872E.html>
or <http://standards.iso.org/iso/9241/306/ed-2/index.html>

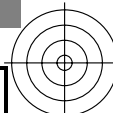
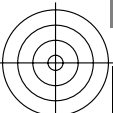
TUB registration: 20240301-fel0/fel010fa.txt /.ps
application for evaluation and measurement of display or print output

TUB material: code=rh4ta

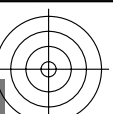
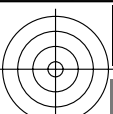


fel00-7N, Page 1/16, Test chart 2G with 40x27=1080 colours; digital equidistant 9 or 16 step colour scales; Colour data in column (A-n): $rgb^* (A_n)$, colorm = 1, xchart = 0, pchart = 0

TUB-test chart fel0; fel0: Test chart wh_d10 with 40x27=1080 colours; 1MR, DH 000n/w/cmy0/rgb
Digital equidistant 9 or 16 step colour scales, L-HDR; $\gamma_R=1,0$
-> $rgb^*_d, 130-0$



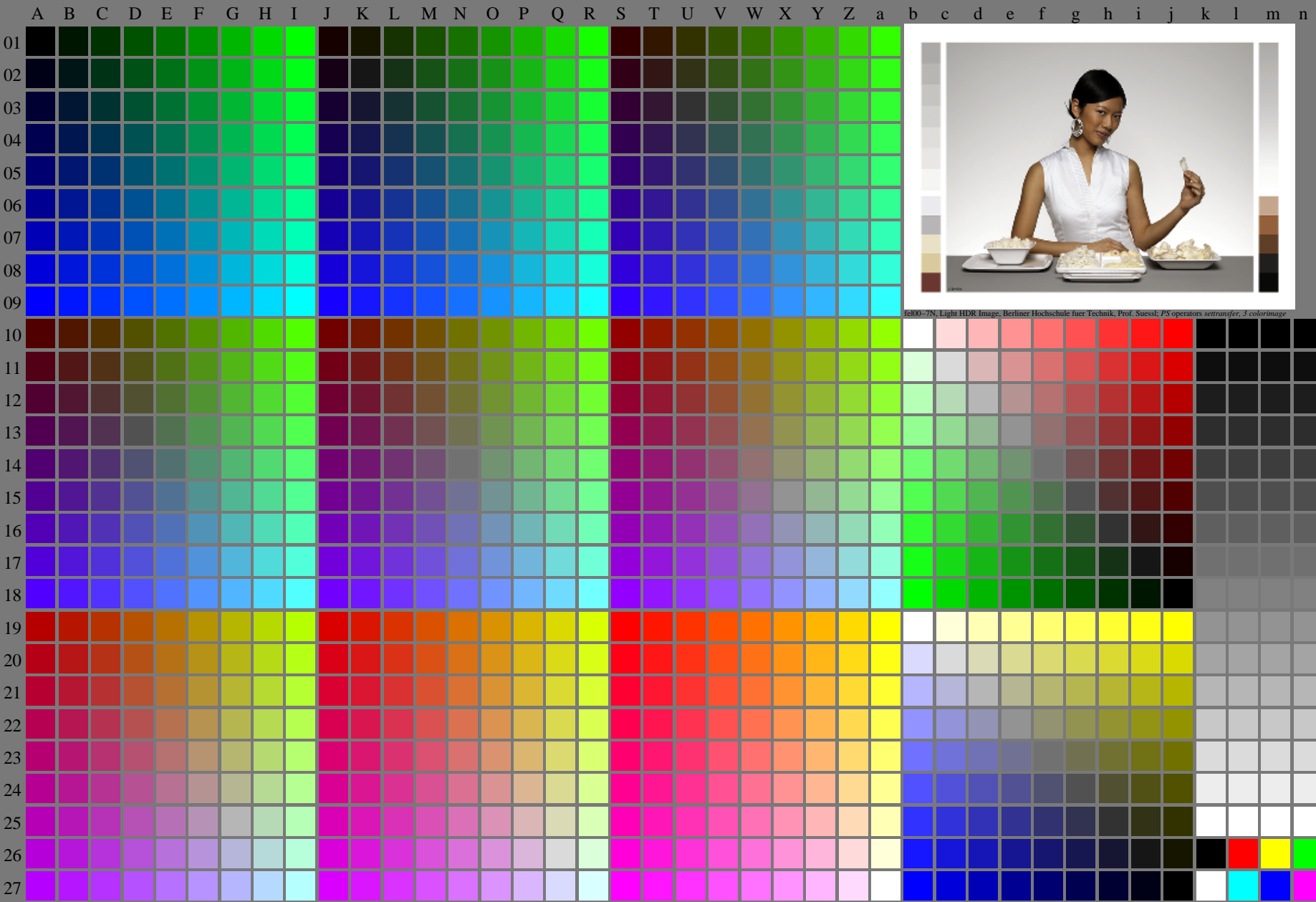
<http://farbe.li.tu-berlin.de/fel0/fel010fa.txt> /.ps; only vector graphic VG;
see separate images of this page: <http://farbe.li.tu-berlin.de/fel0/fel0.htm>



see similar files of the whole serie: <http://farbe.li.tu-berlin.de/fels.htm>
technical information: <http://farbe.li.tu-berlin.de/A/33872E.html>
or <http://standards.iso.org/iso/9241/306/ed-2/index.html>

TUB registration: 20240301-fel0/fel010fa.txt /.ps
application for evaluation and measurement of display or print output

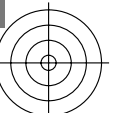
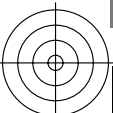
TUB material: code=rh4ta



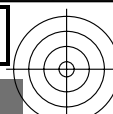
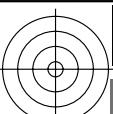
fel00-7N, Light HDR Image, Berliner Hochschule fuer Technik, Prof. Suesst; PS operators seltransfer, 3 colorimage

fel00-7N, Page 1/16, Test chart 2G with 40x27=1080 colours; digital equidistant 9 or 16 step colour scales; Colour data in column (A-n): $rgb^* (A_n)$, colorm = 1, xchart = 8, pchart = 0

TUB-test chart fel0; fel0: Test chart wh_d10 with 40x27=1080 colours; 1MR, DH 000n/w/cmy0/rgb
Digital equidistant 9 or 16 step colour scales, L-HDR; $\gamma_R=1,0$
-> $rgb^*_d, 130-0$



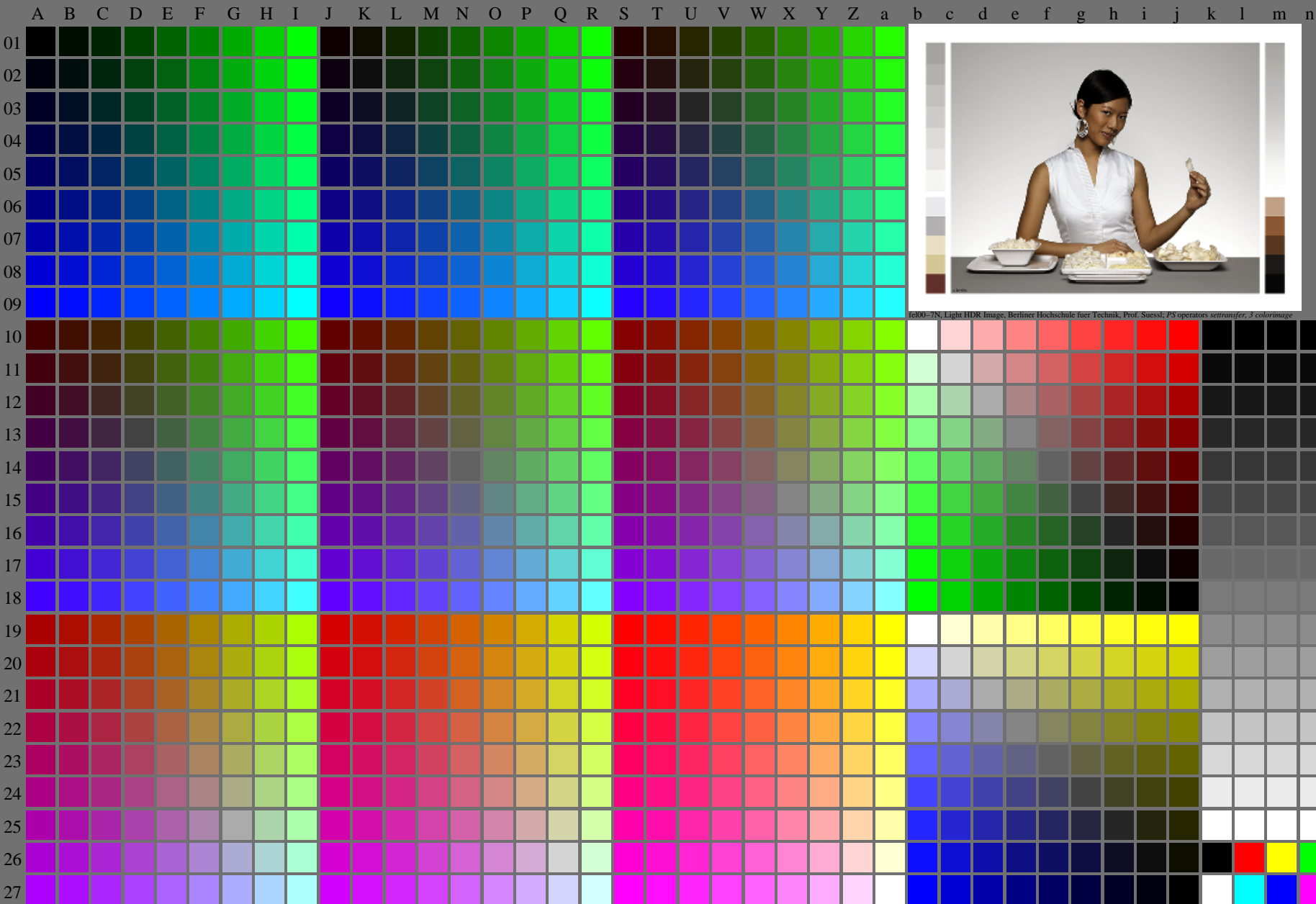
<http://farbe.li.tu-berlin.de/fel0/fel010fa.txt> /.ps; only vector graphic VG;
see separate images of this page: <http://farbe.li.tu-berlin.de/fel0/fel0.htm>



see similar files of the whole serie: <http://farbe.li.tu-berlin.de/fels.htm>
technical information: <http://farbe.li.tu-berlin.de/A/33872E.html>
or <http://standards.iso.org/iso/9241/306/ed-2/index.html>

TUB registration: 20240301-fel0/fel010fa.txt /.ps
application for evaluation and measurement of display or print output

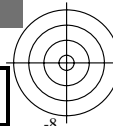
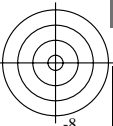
TUB material: code=rh4ta



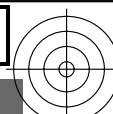
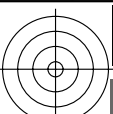
fel00-7N, Light HDR Image, Berliner Hochschule fuer Technik, Prof. Suesst; PS operators seltransfer, 3 colorimage

fel00-7N, Page 1/16, Test chart 2G with 40x27=1080 colours; digital equidistant 9 or 16 step colour scales; Colour data in column (A-n): $rgb^*_{d,130-0}$ (A_n), colorm = 1, xchart = 16, pchart = 0

TUB-test chart fel0; fel0: Test chart wh_d10 with 40x27=1080 colours; 1MR, DH 000n/w/cmy0/rgb
Digital equidistant 9 or 16 step colour scales, L-HDR; $\gamma_R=1,0$
-> $rgb^*_{d,130-0}$



<http://farbe.li.tu-berlin.de/fel0/fel010fa.txt> /.ps; only vector graphic VG;
see separate images of this page: <http://farbe.li.tu-berlin.de/fel0/fel0.htm>

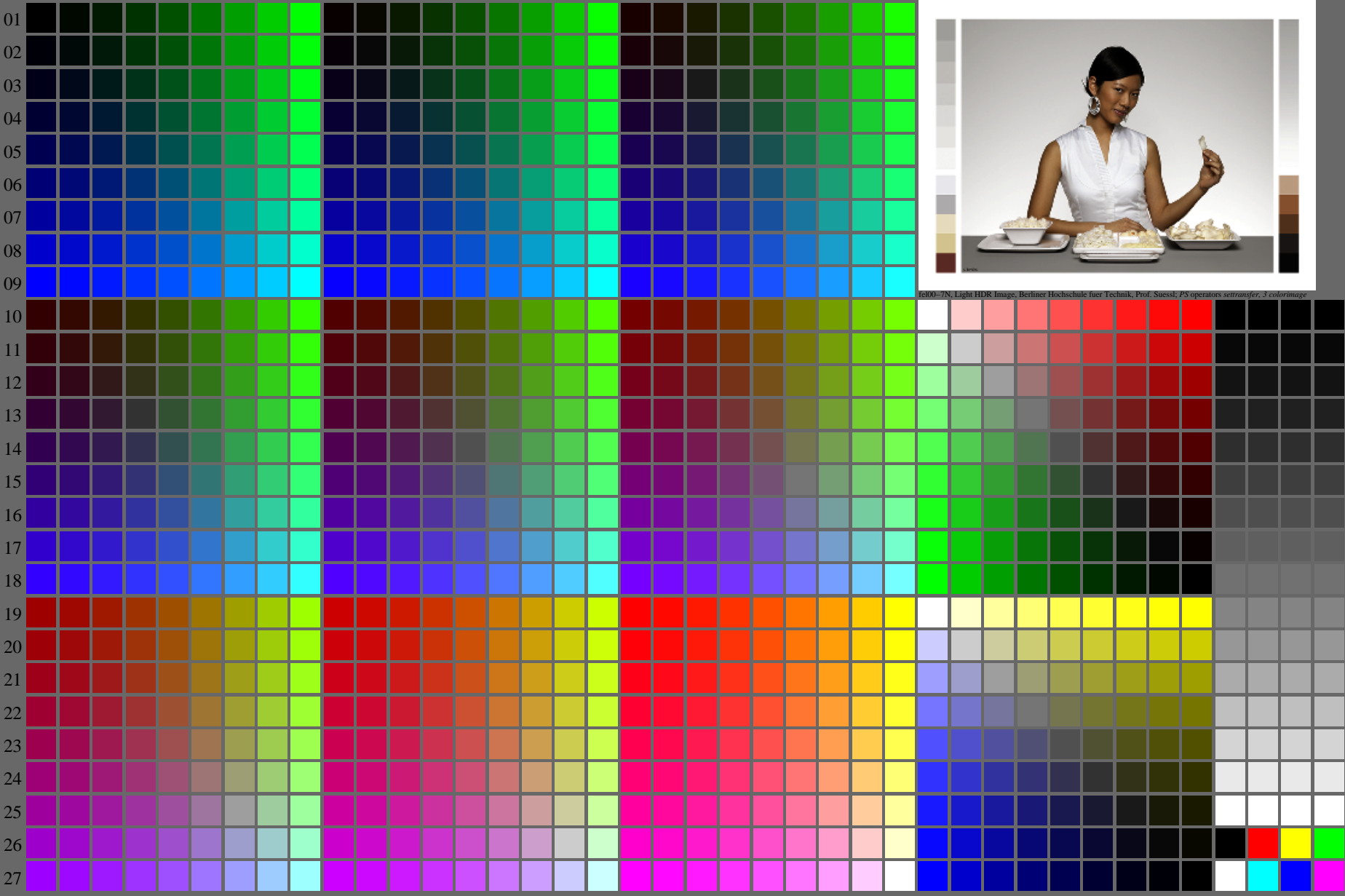


see similar files of the whole serie: <http://farbe.li.tu-berlin.de/fels.htm>
technical information: <http://farbe.li.tu-berlin.de/A/33872E.html>
or <http://standards.iso.org/iso/9241/306/ed-2/index.html>

TUB registration: 20240301-fel0/fel010fa.txt /.ps
application for evaluation and measurement of display or print output

TUB material: code=rh4ta

A B C D E F G H I J K L M N O P Q R S T U V W X Y Z a b c d e f g h i j k l m n

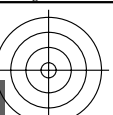
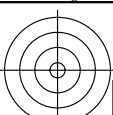


fel00-7N, Page 1/16, Test chart 2G with 40x27=1080 colours; digital equidistant 9 or 16 step colour scales; Colour data in column (A-n): $rgb^* (A_n)$, $colorm = 1$, $xchart = 24$, $pchart = 0$

TUB-test chart fel0; fel0: Test chart wh_d10 with 40x27=1080 colours; 1MR, DH 000n/w/cmy0/rgb
Digital equidistant 9 or 16 step colour scales, L-HDR; $\gamma_R=1,0$
-> $rgb^*_d, 130-0$:



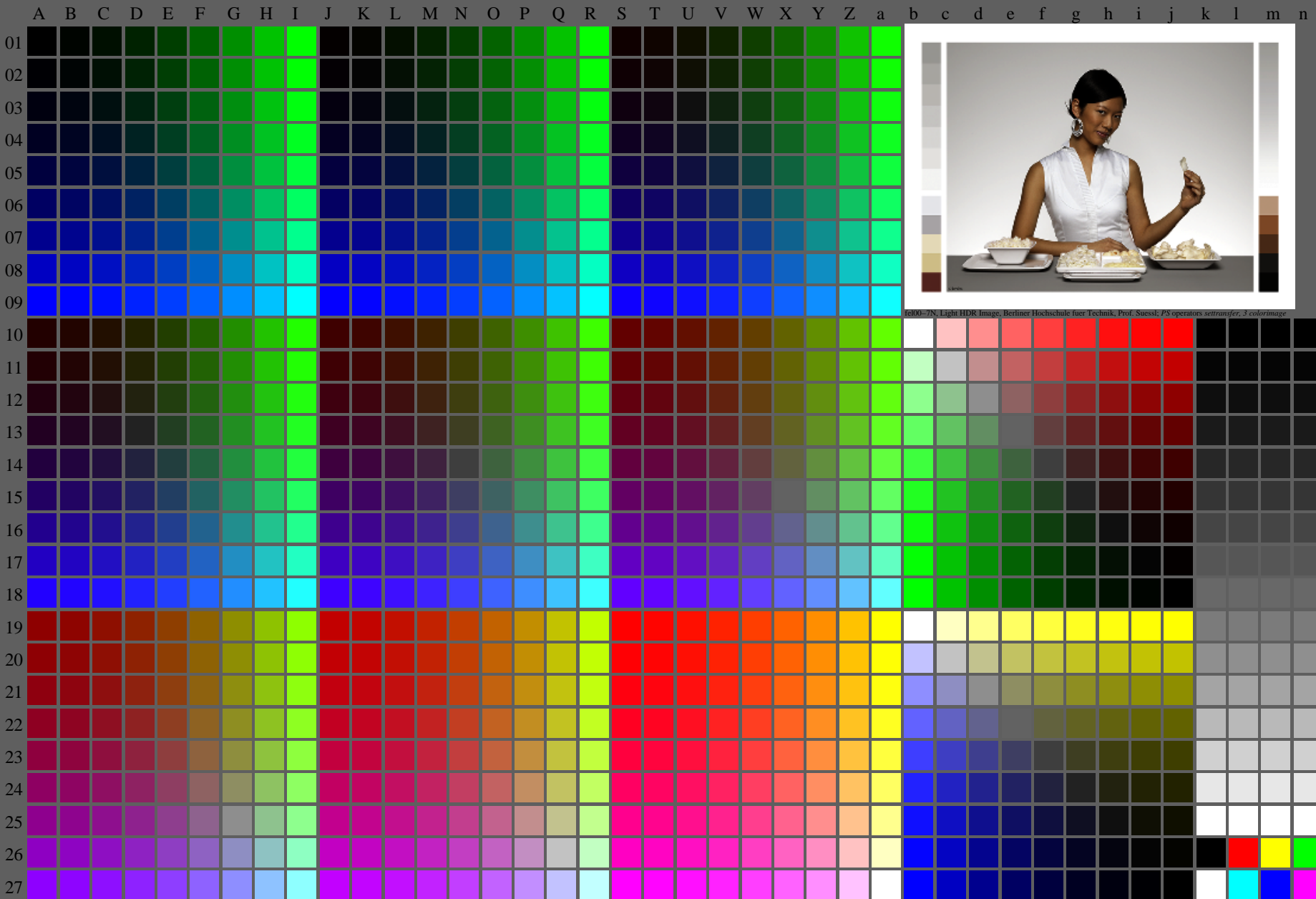
<http://farbe.li.tu-berlin.de/fel0/fel010fa.txt> /.ps; only vector graphic VG;
see separate images of this page: <http://farbe.li.tu-berlin.de/fel0/fel0.htm>



see similar files of the whole serie: <http://farbe.li.tu-berlin.de/fels.htm>
technical information: <http://farbe.li.tu-berlin.de/A/33872E.html>
or <http://standards.iso.org/iso/9241/306/ed-2/index.html>

TUB registration: 20240301-fel0/fel010fa.txt /.ps
application for evaluation and measurement of display or print output

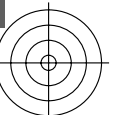
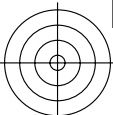
TUB material: code=rh4ta



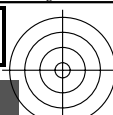
fel00-7N, Light HDR Image, Berliner Hochschule fuer Technik, Prof. Suesst, PS operators seltransfer, 3 colorimage

fel00-7N, Page 1/16, Test chart 2G with 40x27=1080 colours; digital equidistant 9 or 16 step colour scales; Colour data in column (A-n): $rgb^*_{d,130-0}$ (A_n), colorm = 1, xchart = 32, pchart = 0

TUB-test chart fel0; fel0: Test chart wh_d10 with 40x27=1080 colours; 1MR, DH 000n/w/cmy0/rgb
Digital equidistant 9 or 16 step colour scales, L-HDR; $\gamma_R=1,0$
-> $rgb^*_{d,130-0}$



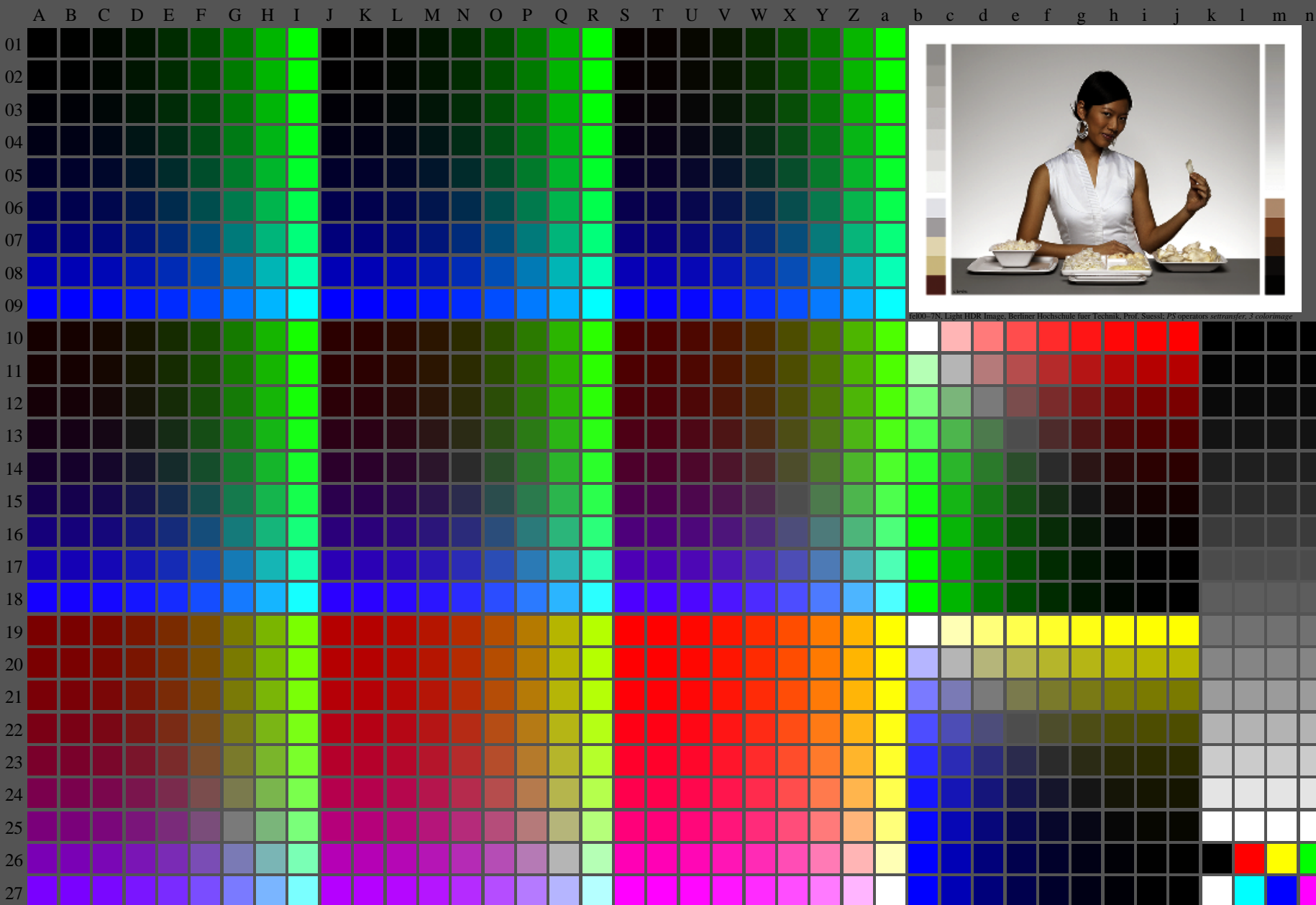
<http://farbe.li.tu-berlin.de/fel0/fel010fa.txt> /.ps; only vector graphic VG;
see separate images of this page: <http://farbe.li.tu-berlin.de/fel0/fel0.htm>



see similar files of the whole series: <http://farbe.li.tu-berlin.de/fels.htm>
technical information: <http://farbe.li.tu-berlin.de/A/33872E.html>
or <http://standards.iso.org/iso/9241/306/ed-2/index.html>

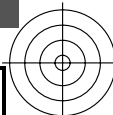
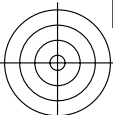
TUB registration: 20240301-fel0/fel010fa.txt /.ps
application for evaluation and measurement of display or print output

TUB material: code=rh4ta



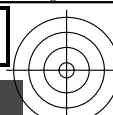
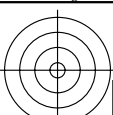
fel00-7N, Page 1/16, Test chart 2G with 40x27=1080 colours; digital equidistant 9 or 16 step colour scales; Colour data in column (A-n): $rgb^* (A_n)$, $colorm = 1$, $xchart = 40$, $pchart = 0$

TUB-test chart fel0; fel0: Test chart wh_d10 with 40x27=1080 colours; 1MR, DH 000n/w/cmy0/rgb
Digital equidistant 9 or 16 step colour scales, L-HDR; $\gamma_R=1,0$
-> $rgb^*_d, 130:0$



l=13400

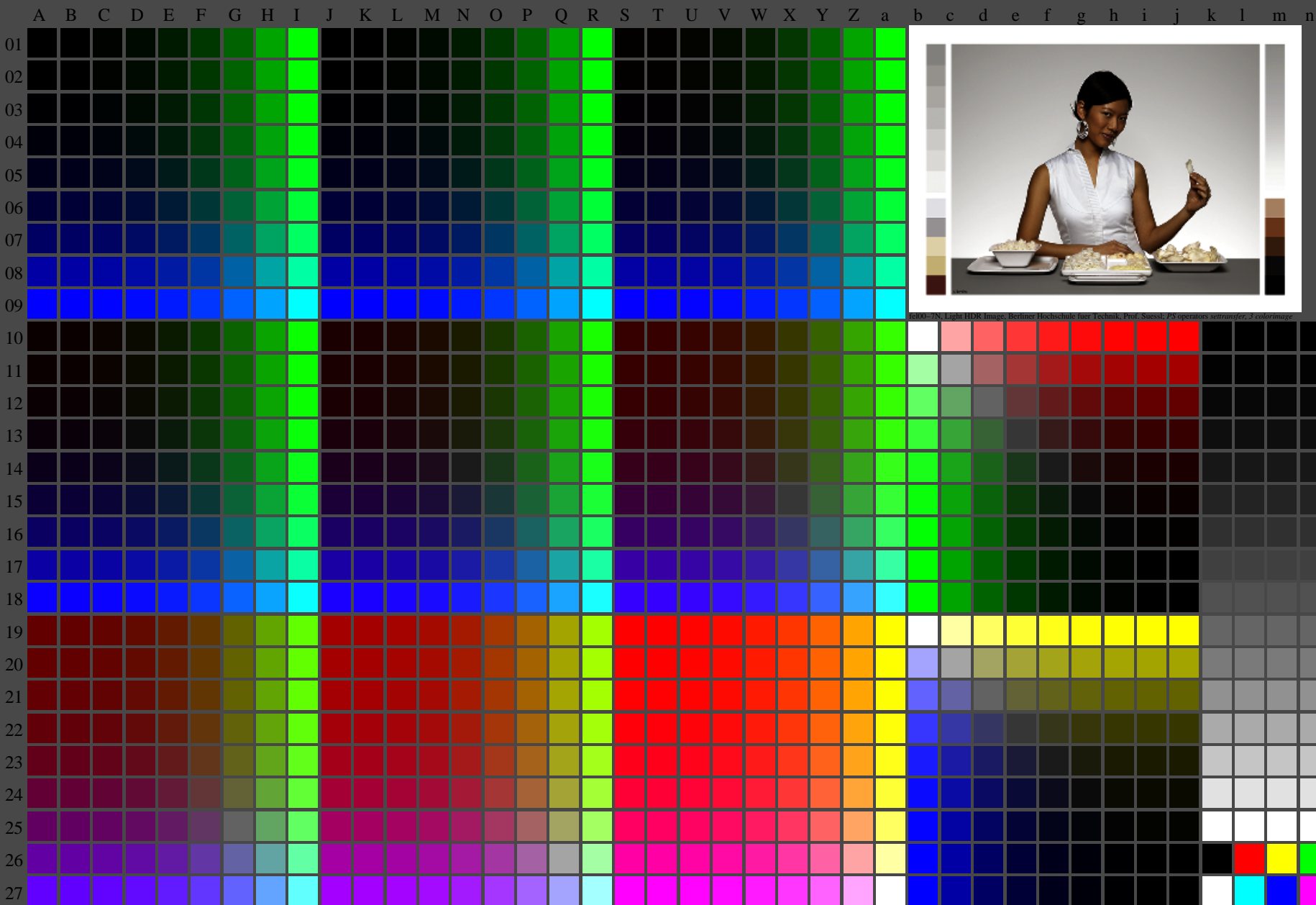
<http://farbe.li.tu-berlin.de/fel0/fel010fa.txt> /.ps; only vector graphic VG;
see separate images of this page: <http://farbe.li.tu-berlin.de/fel0/fel0.htm>



see similar files of the whole serie: <http://farbe.li.tu-berlin.de/fels.htm>
technical information: <http://farbe.li.tu-berlin.de/A/33872E.html>
or <http://standards.iso.org/iso/9241/306/ed-2/index.html>

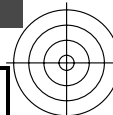
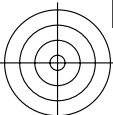
TUB registration: 20240301-fel0/fel010fa.txt /.ps
application for evaluation and measurement of display or print output

TUB material: code=rh4ta

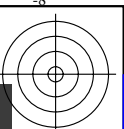
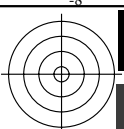


fel00-7N, Page 1/16, Test chart 2G with 40x27=1080 colours; digital equidistant 9 or 16 step colour scales; Colour data in column (A-n): $rgb^*_{d,130-0}$ (A_n), colorm = 1, xchart = 48, pchart = 0

TUB-test chart fel0; fel0: Test chart wh_d10 with 40x27=1080 colours; 1MR, DH 000n/w/cmy0/rgb
Digital equidistant 9 or 16 step colour scales, L-HDR; $\gamma_R=1,0$
-> $rgb^*_{d,130-0}$

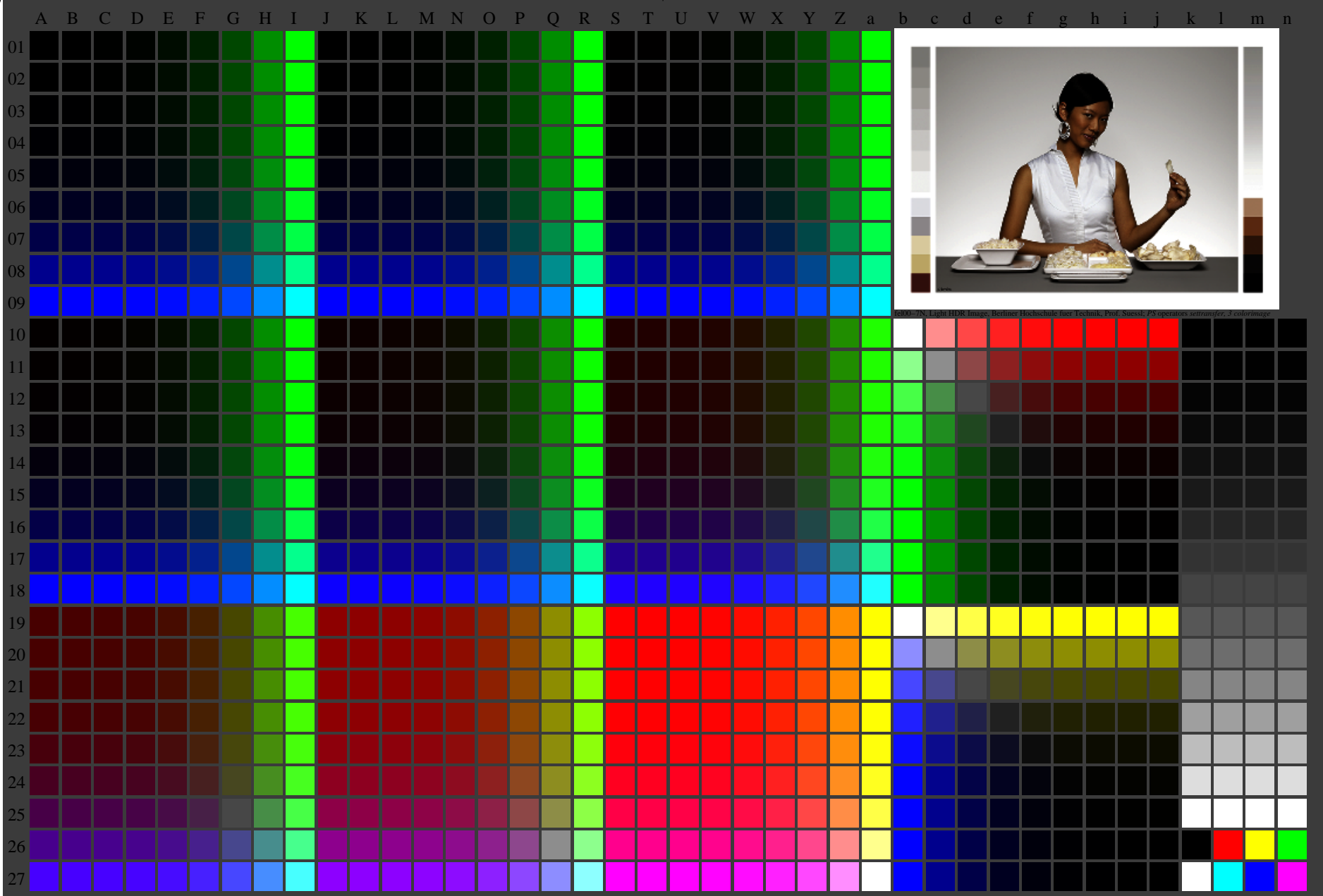


<http://farbe.li.tu-berlin.de/fel0/fel010fa.txt> /.ps; only vector graphic VG;
see separate images of this page: <http://farbe.li.tu-berlin.de/fel0/fel0.htm>



see similar files of the whole serie: <http://farbe.li.tu-berlin.de/fels.htm>
technical information: <http://farbe.li.tu-berlin.de/A/33872E.html>
or <http://standards.iso.org/iso/9241/306/ed-2/index.html>

TUB registration: 20240301-fel0/fel010fa.txt /.ps
application for evaluation and measurement of display or print output
TUB material: code=rh4ta



fel00-7N, Page 1/16, Test chart 2G with 40x27=1080 colours; digital equidistant 9 or 16 step colour scales; Colour data in column (A-n): $rgb^*_{d,130-0}$ (A_n), colorm = 1, xchart = 56, pchart = 0

TUB-test chart fel0; fel0: Test chart wh_d10 with 40x27=1080 colours; 1MR, DH 000n/w/cmy0/rgb
Digital equidistant 9 or 16 step colour scales, L-HDR; $\gamma_R=1,0$
-> $rgb^*_{d,130-0}$

