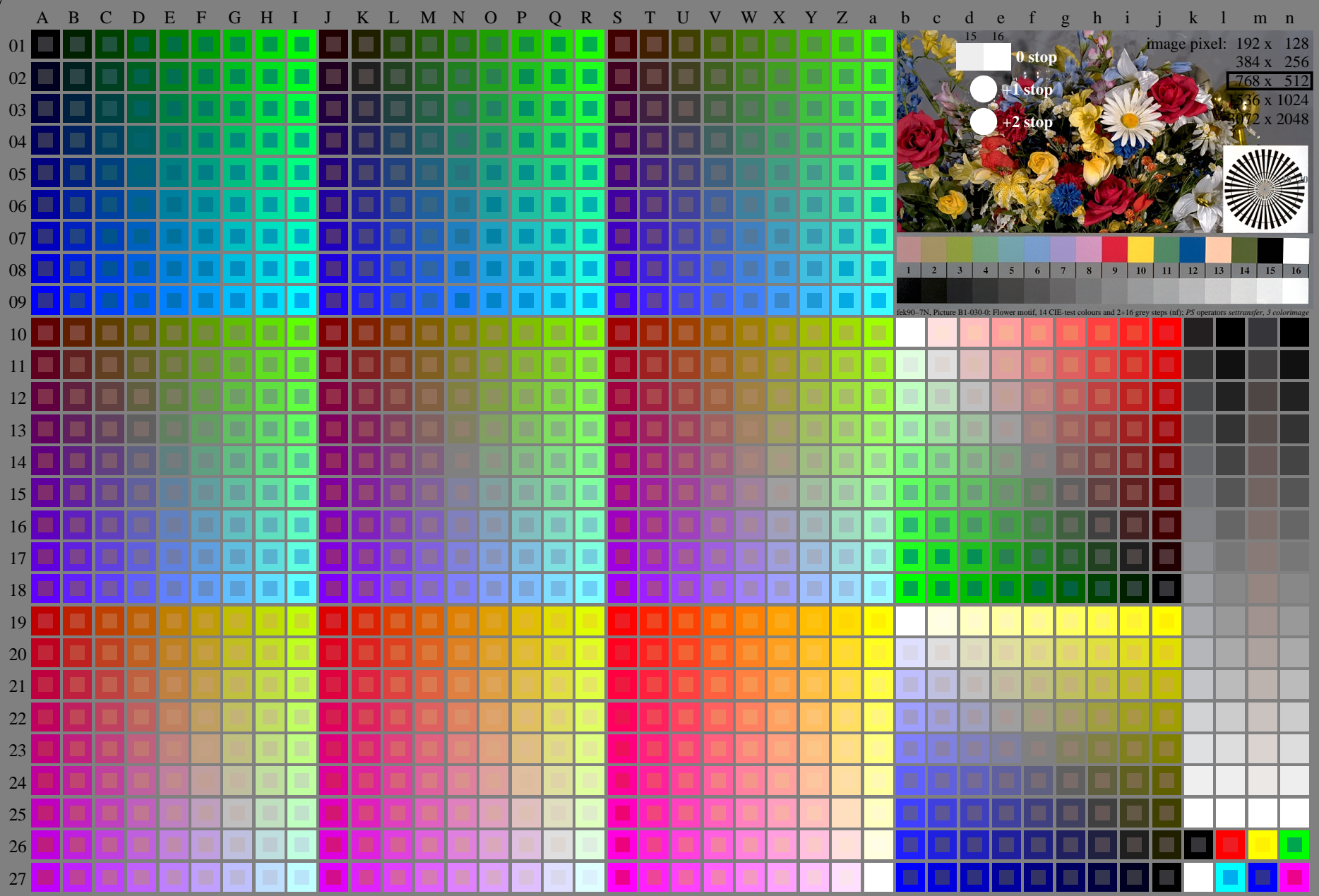


<http://farbe.li.tu-berlin.de/fek9/fek9l0np.pdf> / .ps; only vector graphic VG; start output
see separate images of this page: <http://farbe.li.tu-berlin.de/fek9/fek9.htm>

see similar files of the whole serie: <http://farbe.li.tu-berlin.de/feks.htm>
technical information: <http://farbe.li.tu-berlin.de/A/33872E.html>
or <http://standards.iso.org/iso/9241/506/ed-2/index.html>



fek90-7N, Picture B1-030-0: Flower motif, 14 CIE-test colours and 2+16 grey steps (n); PS operators settransfer, 3 colorimage

fek90-7N, Page 1/16, Test chart 2G with 40x27=1080 colours; digital equidistant 9 or 16 step colour scales; Colour data in column (A-n): rgb + cmy0 (A_j + k26_n27), 000n (k), w (l), nnn0 (m), www (n), colorm = 0, xchart = 0, pchart = 0

TUB-test chart fek9; fek9: Test chart uh_d08 with 40x27=1080 colours; DH
Digital equidistant 9 or 16 step colour scales, L-HDR; $\gamma_R=0,64$

000n/w/cmy0/rgb
->rgb*d, 030-0:

TUB registration: 20240301-fek9/fek9l0np.pdf / .ps
application for evaluation and measurement of display or print output
TUB material: code=rh4ta