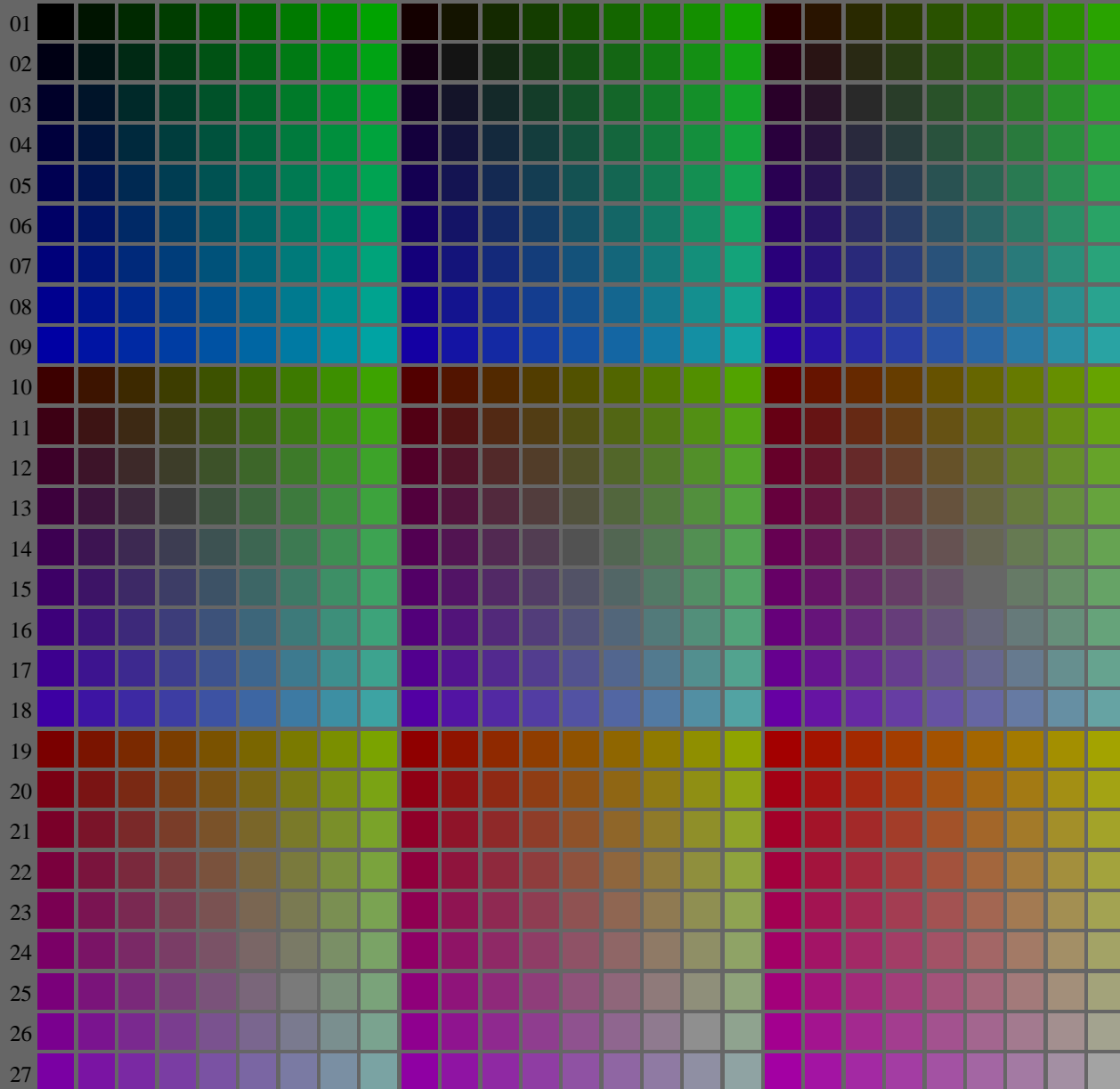


<http://farbe.li.tu-berlin.de/fek8/fek810fa.txt/.ps>; only vector graphic VG; start output see separate images of this page: <http://farbe.li.tu-berlin.de/fek8/fek8.htm>

A B C D E F G H I J K L M N O P Q R S T U V W X Y Z a b c d e f g h i j k l m n



fek80-7N, Picture B1-130-0; Flower motif, 14 CIE-test colours and 2+16 grey steps (nd); PS operators *settransfer, 3 colorimage*

fek80-7N, Page 1/16, Test chart 2G with 40x27=1080 colours; digital equidistant 9 or 16 step colour scales; Colour data in column (A-n): $rgb^*(A_n)$, $colorm = 1$, $xchart = 0$, $pchart = 0$

TUB-test chart fek8; fek8: Test chart uh_d08 with 40x27=1080 colours; 1MR, DH 000n/w/cmy0/rgb
Digital equidistant 9 or 16 step colour scales, L-HDR; $\gamma_R=0,80$
-> $rgb^*_d, 130-0$:

see similar files of the whole series: <http://farbe.li.tu-berlin.de/fek8.htm>
technical information: <http://farbe.li.tu-berlin.de/A/33872E.html>
or <http://standards.iso.org/iso/9241/306/ed-2/index.html>

TUB registration: 20240301-fek8/fek810fa.txt/.ps
application for evaluation and measurement of display or print output
TUB material: code=rh4ta

<http://farbe.li.tu-berlin.de/fek8/fek810fa.txt/.ps>; only vector graphic VG;
see separate images of this page: <http://farbe.li.tu-berlin.de/fek8/fek8.htm>

A B C D E F G H I J K L M N O P Q R S T U V W X Y Z a b c d e f g h i j k l m n

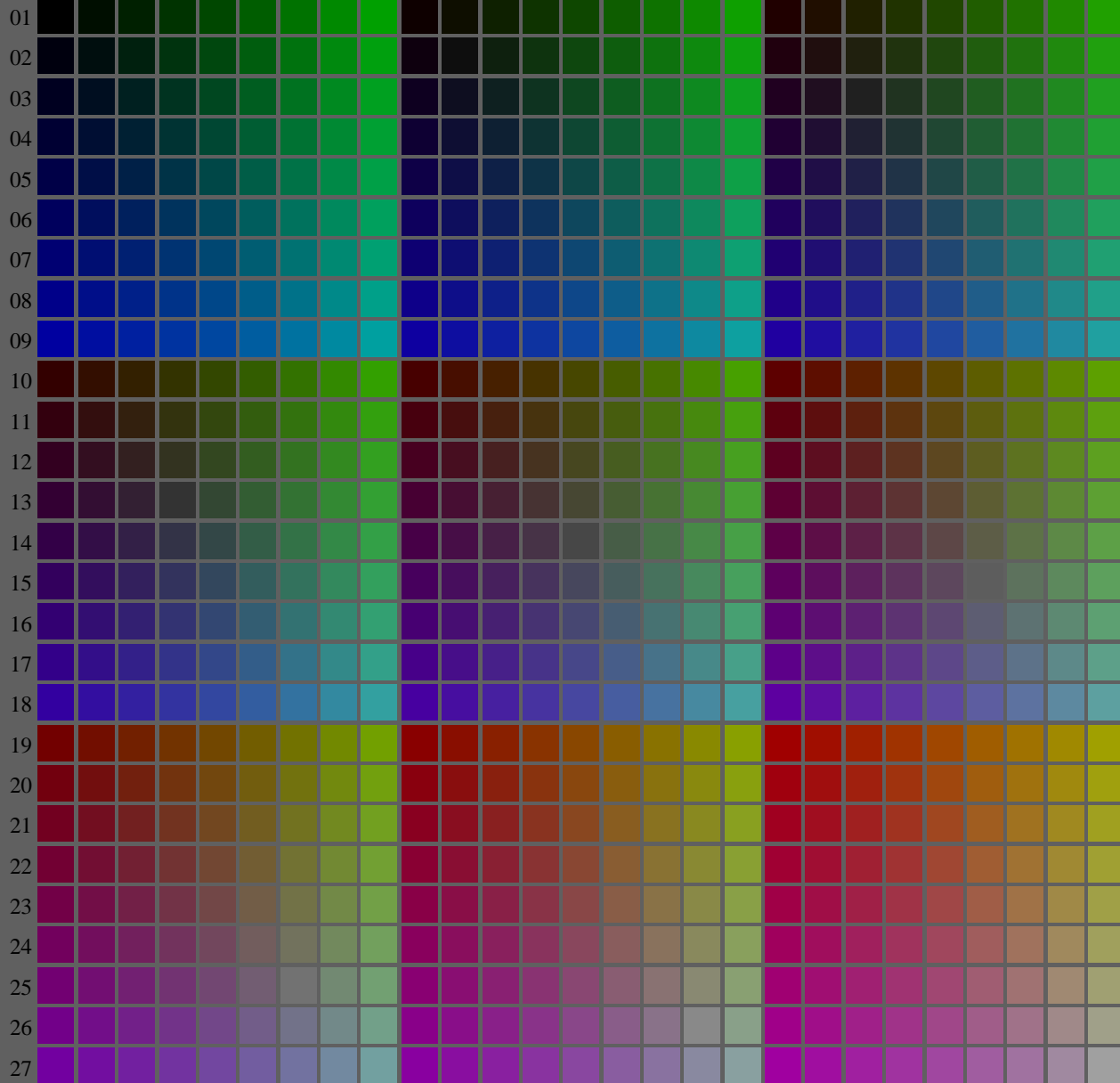


image pixel: 192 x 128
384 x 256
768 x 512
1536 x 1024
3072 x 2048

0 stop
+1 stop
+2 stop

1 2 3 4 5 6 7 8 9 10 11 12 13 14 15 16

fek80-7N, Picture B1-130-1: Flower motif, 14 CIE-test colours and 2+16 grey steps (nd); PS operators *settransfer, 3 colorimage*

see similar files of the whole series: <http://farbe.li.tu-berlin.de/fek8.htm>
technical information: <http://farbe.li.tu-berlin.de/A/33872E.html>
or <http://standards.iso.org/iso/9241/306/ed-2/index.html>

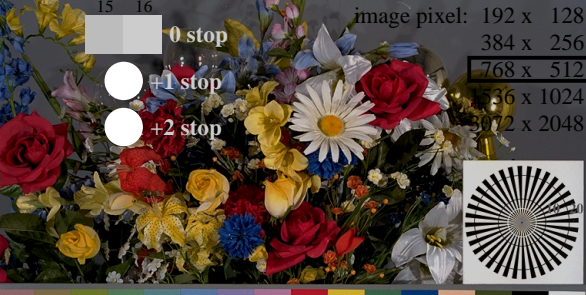
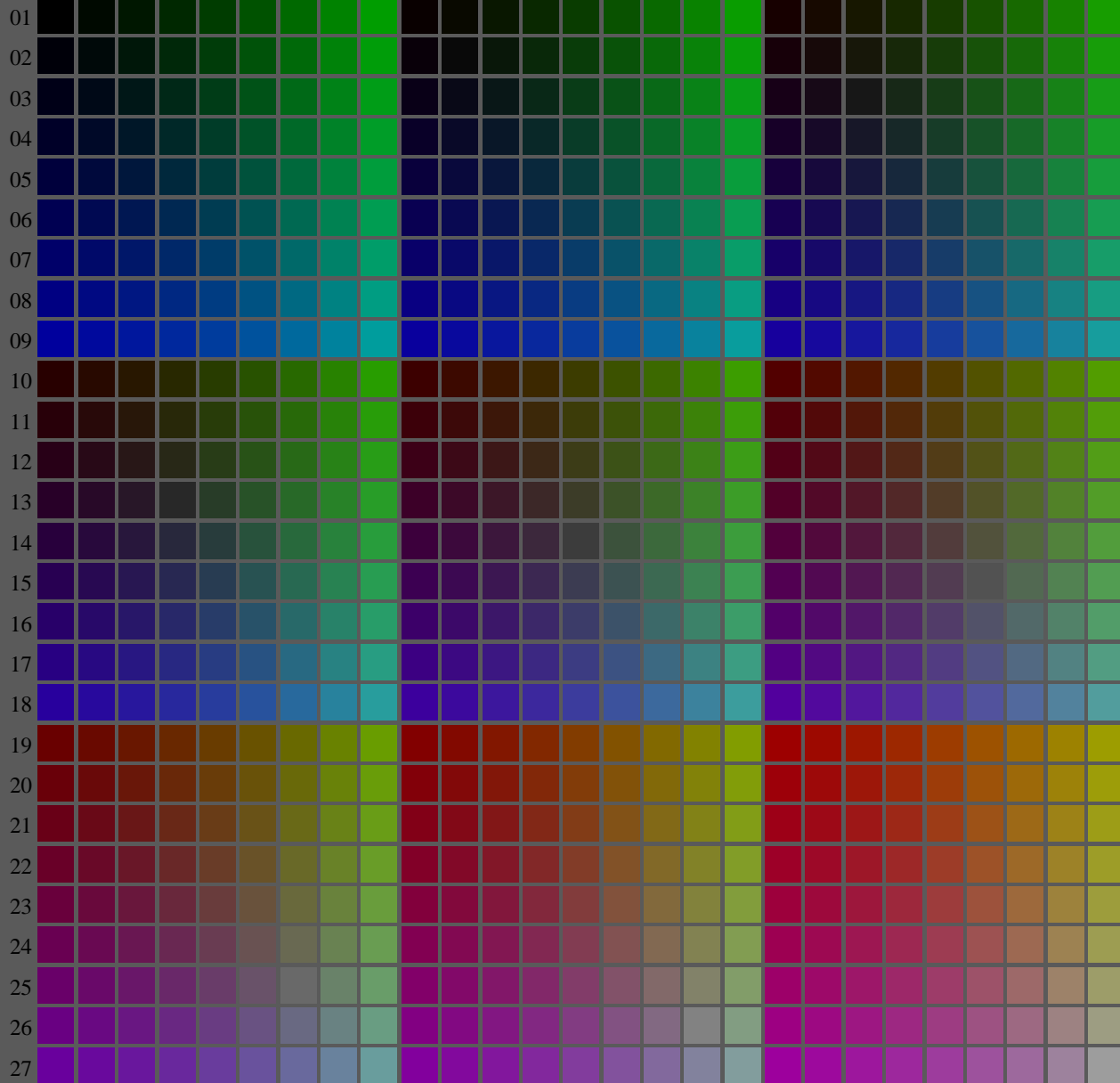
TUB registration: 20240301-fek8/fek810fa.txt/.ps
application for evaluation and measurement of display or print output
TUB material: code=rh4ta

fek80-7N, Page 1/16, Test chart 2G with 40x27=1080 colours; digital equidistant 9 or 16 step colour scales; Colour data in column (A-n): $rgb^*_{(A_n)}$, $colorm = 1$, $xchart = 8$, $pchart = 0$

TUB-test chart fek8; fek8: Test chart uh_d08 with 40x27=1080 colours; 1MR, DH 000n/w/cmy0/rgb
Digital equidistant 9 or 16 step colour scales, L-HDR; $\gamma_R=0,80$
-> $rgb^*_d, 130-0$:

<http://farbe.li.tu-berlin.de/fek8/fek810fa.txt/.ps>; only vector graphic VG;
see separate images of this page: <http://farbe.li.tu-berlin.de/fek8/fek8.htm>

A B C D E F G H I J K L M N O P Q R S T U V W X Y Z a b c d e f g h i j k l m n



fek80-7N, Picture B1-130-2: Flower motif, 14 CIE-test colours and 2+16 grey steps (nd); PS operators *settransfer, 3 colorimage*

fek80-7N, Page 1/16, Test chart 2G with 40x27=1080 colours; digital equidistant 9 or 16 step colour scales; Colour data in column (A-n): $rgb^*(A_n)$, $colorm = 1$, $xchart = 16$, $pchart = 0$

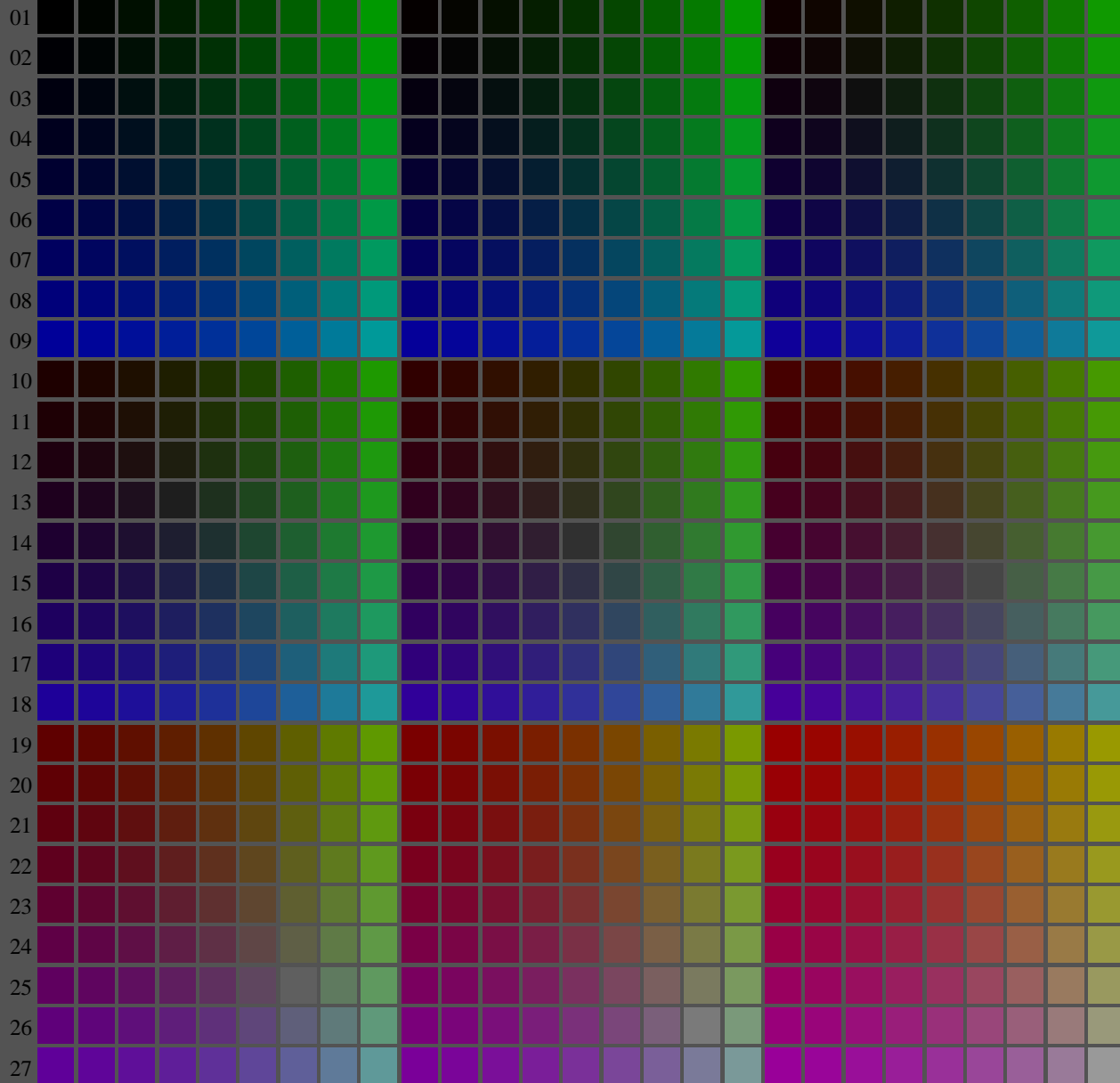
TUB-test chart fek8; fek8: Test chart uh_d08 with 40x27=1080 colours; 1MR, DH 000n/w/cmy0/rgb
Digital equidistant 9 or 16 step colour scales, L-HDR; $\gamma_R=0,80$
-> $rgb^*_d, 130-0$:

see similar files of the whole series: <http://farbe.li.tu-berlin.de/fek8.htm>
technical information: <http://farbe.li.tu-berlin.de/A/33872E.html>
or <http://standards.iso.org/iso/9241/306/ed-2/index.html>

TUB registration: 20240301-fek8/fek810fa.txt/.ps
application for evaluation and measurement of display or print output
TUB material: code=rh4ta

<http://farbe.li.tu-berlin.de/fek8/fek810fa.txt/.ps>; only vector graphic VG;
see separate images of this page: <http://farbe.li.tu-berlin.de/fek8/fek8.htm>

A B C D E F G H I J K L M N O P Q R S T U V W X Y Z a b c d e f g h i j k l m n



fek80-7N, Picture B1-130-3: Flower motif, 14 CIE-test colours and 2+16 grey steps (nd); PS operators *settransfer, 3 colorimage*

fek80-7N, Page 1/16, Test chart 2G with 40x27=1080 colours; digital equidistant 9 or 16 step colour scales; Colour data in column (A-n): $rgb^*(A_n)$, $colorm = 1$, $xchart = 24$, $pchart = 0$

TUB-test chart fek8; fek8: Test chart uh_d08 with 40x27=1080 colours; 1MR, DH 000n/w/cmy0/rgb
Digital equidistant 9 or 16 step colour scales, L-HDR; $\gamma_R=0,80$
-> $rgb^*_d, 130-0$:

see similar files of the whole serie: <http://farbe.li.tu-berlin.de/fek8.htm>
technical information: <http://farbe.li.tu-berlin.de/A/33872E.html>
or <http://standards.iso.org/iso/9241/5M6/ed-2/index.html>

TUB registration: 20240301-fek8/fek810fa.txt/.ps
application for evaluation and measurement of display or print output
TUB material: code=rh4ta

<http://farbe.li.tu-berlin.de/fek8/fek810fa.txt/.ps>; only vector graphic VG;
see separate images of this page: <http://farbe.li.tu-berlin.de/fek8/fek8.htm>

A B C D E F G H I J K L M N O P Q R S T U V W X Y Z a b c d e f g h i j k l m n

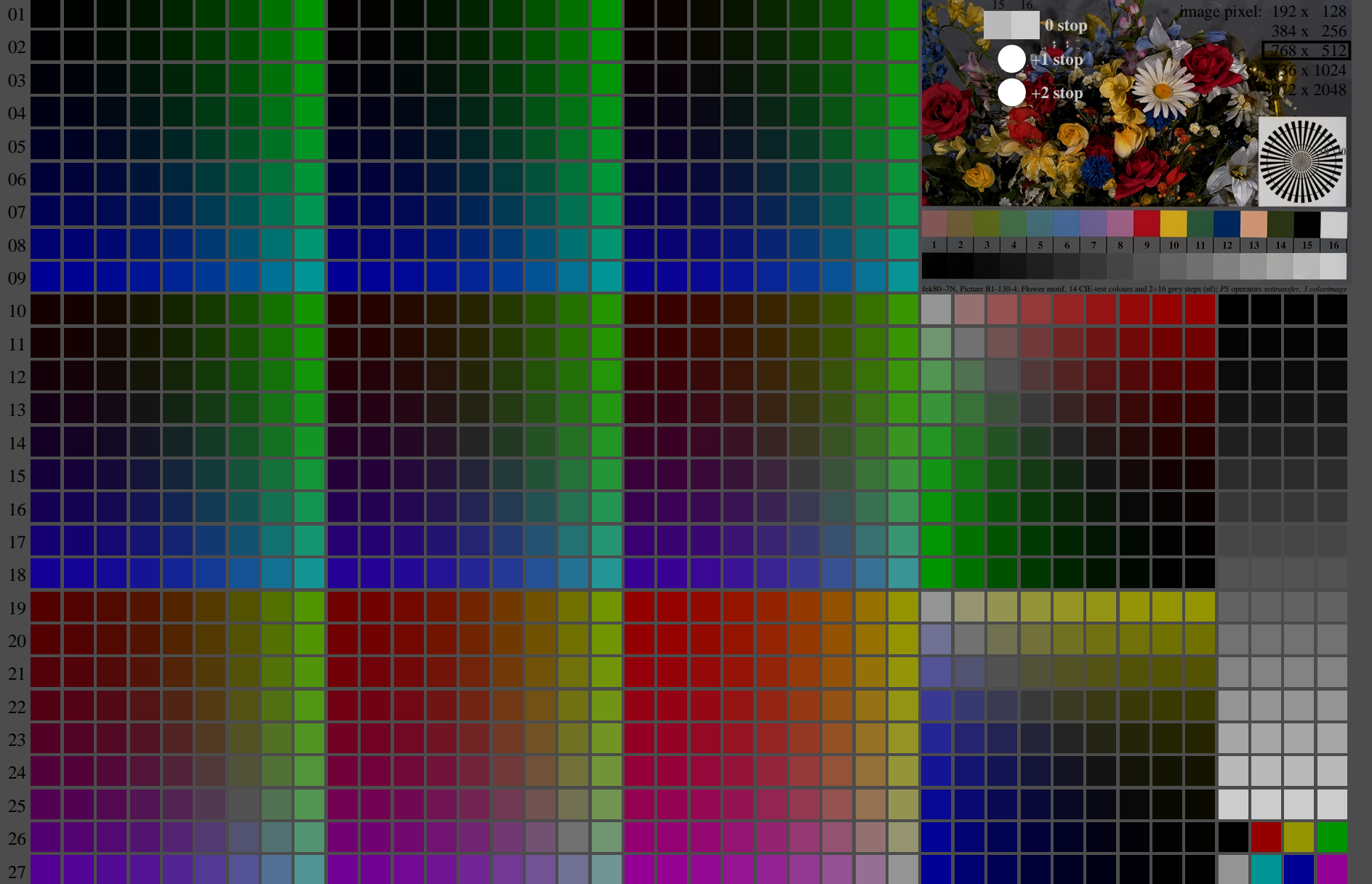


image pixel: 192 x 128
384 x 256
768 x 512
1536 x 1024
3072 x 2048

0 stop
+1 stop
+2 stop

1 2 3 4 5 6 7 8 9 10 11 12 13 14 15 16

fek80-7N, Picture B1-130-4; Flower motif, 14 CIE-test colours and 2+16 grey steps (nD); PS operators settransfer, 3 colorimage

see similar files of the whole serie: <http://farbe.li.tu-berlin.de/fek8.htm>
technical information: <http://farbe.li.tu-berlin.de/AV33872E.html>
or <http://standards.iso.org/iso/9241/5M6/ed-2/index.html>

TUB registration: 20240301-fek8/fek810fa.txt/.ps
application for evaluation and measurement of display or print output
TUB material: code=rh4ta

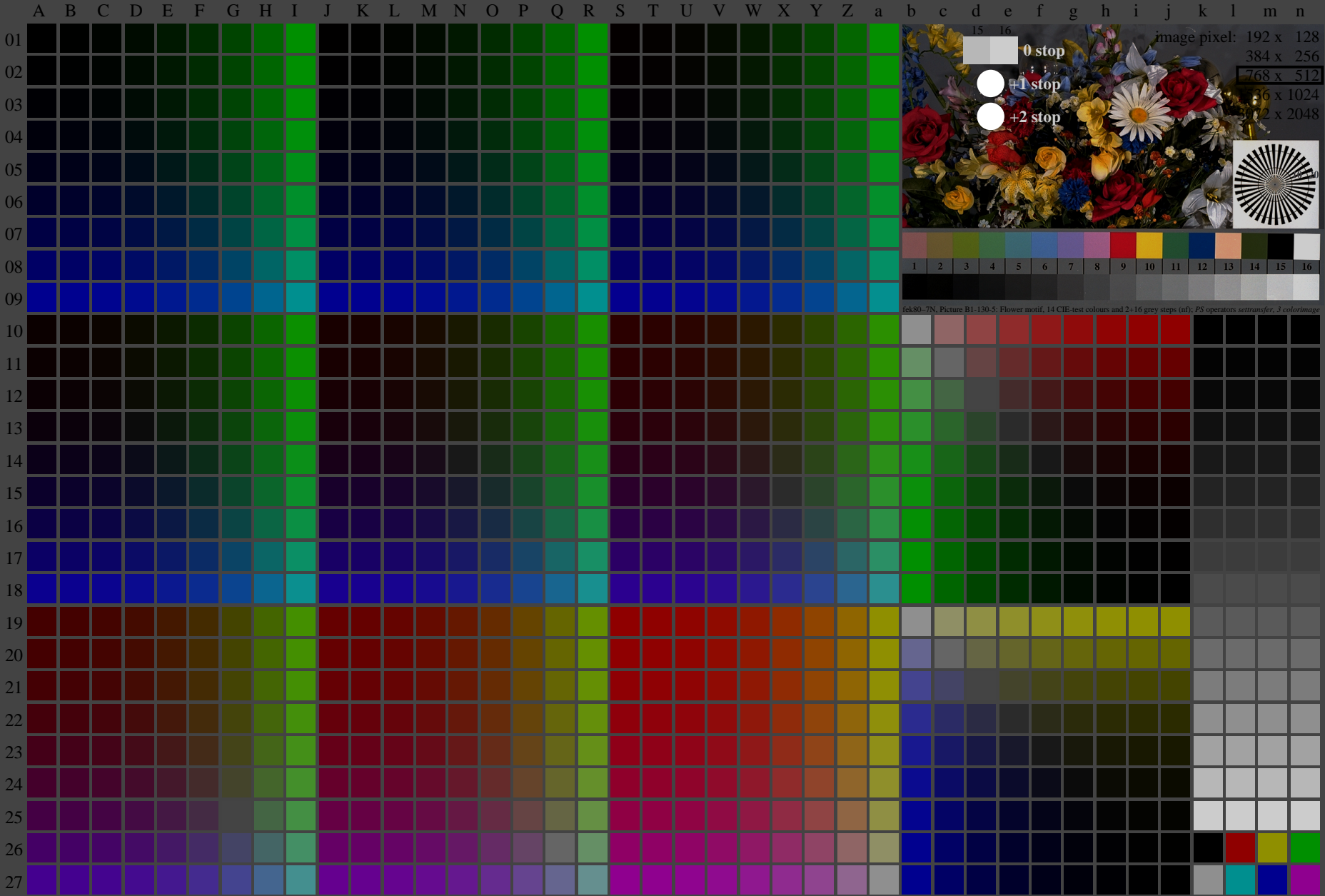
fek80-7N, Page 1/16, Test chart 2G with 40x27=1080 colours; digital equidistant 9 or 16 step colour scales; Colour data in column (A-n): $rgb^*(A_n)$, colorm = 1, xchart = 32, pchart = 0

TUB-test chart fek8; fek8: Test chart uh_d08 with 40x27=1080 colours; 1MR, DH 000n/w/cmy0/rgb
Digital equidistant 9 or 16 step colour scales, L-HDR; $\gamma_R=0,80$
-> $rgb^*_d, 130-0$:

<http://farbe.li.tu-berlin.de/fek8/fek810fa.txt/.ps>; only vector graphic VG;
see separate images of this page: <http://farbe.li.tu-berlin.de/fek8/fek8.htm>

see similar files of the whole serie: <http://farbe.li.tu-berlin.de/feks.htm>
technical information: <http://farbe.li.tu-berlin.de/A/33872E.html>
or <http://standards.iso.org/iso/9241/506/ed-2/index.html>

TUB registration: 20240301-fek8/fek810fa.txt/.ps
application for evaluation and measurement of display or print output
TUB material: code=rh4ta

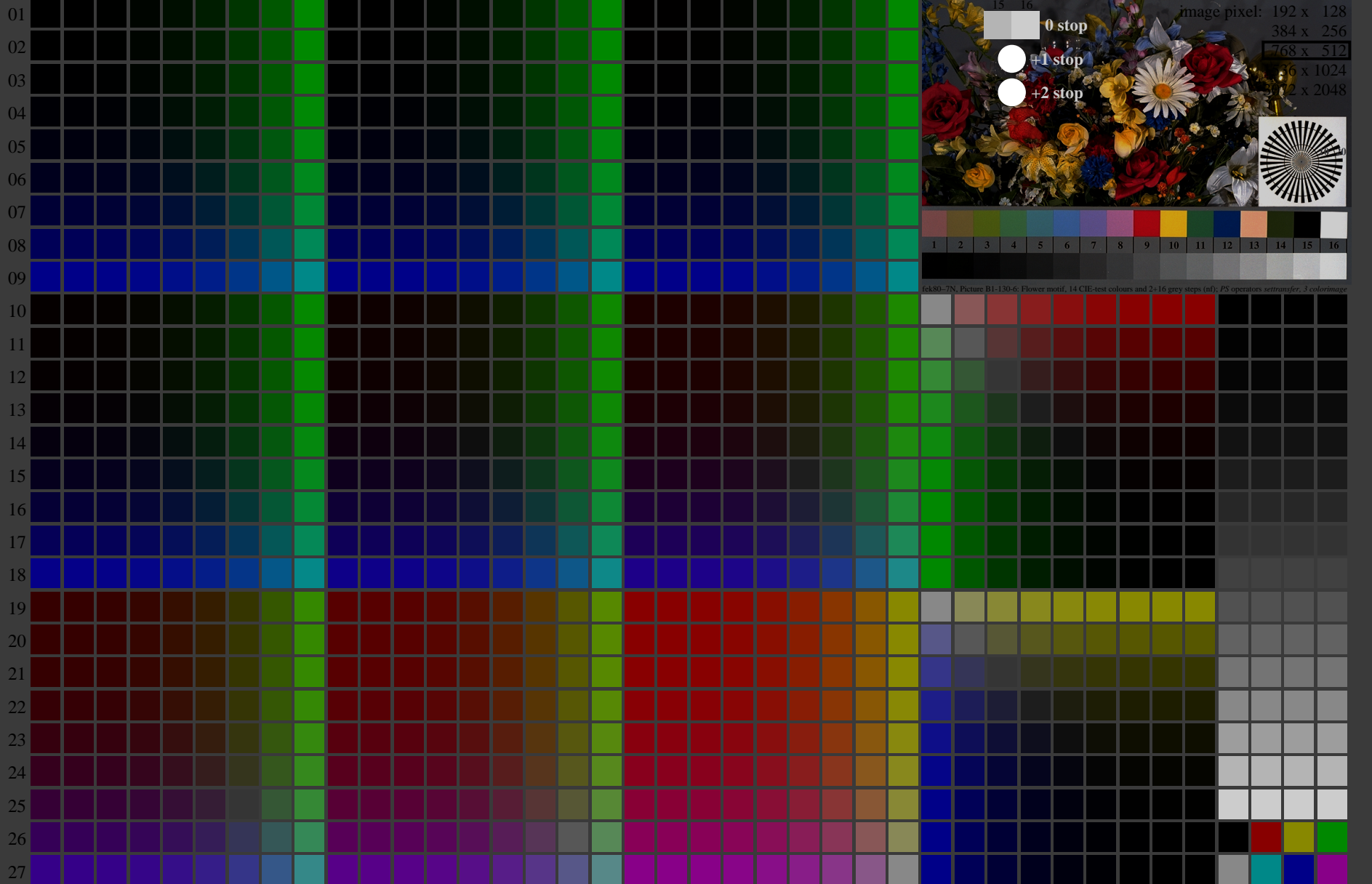


fek80-7N, Page 1/16, Test chart 2G with 40x27=1080 colours; digital equidistant 9 or 16 step colour scales; Colour data in column (A-n): $rgb^*_d(A_n)$, $colorm = 1$, $xchart = 40$, $pchart = 0$

TUB-test chart fek8; fek8: Test chart uh_d08 with 40x27=1080 colours; 1MR, DH 000n/w/cmy0/rgb
Digital equidistant 9 or 16 step colour scales, L-HDR; $\gamma_R=0,80$
-> $rgb^*_d, 130-0$

<http://farbe.li.tu-berlin.de/fek8/fek810fa.txt/.ps>; only vector graphic VG;
see separate images of this page: <http://farbe.li.tu-berlin.de/fek8/fek8.htm>

A B C D E F G H I J K L M N O P Q R S T U V W X Y Z a b c d e f g h i j k l m n



see similar files of the whole serie: <http://farbe.li.tu-berlin.de/feks.htm>
technical information: <http://farbe.li.tu-berlin.de/A/33872E.html>
or <http://standards.iso.org/iso/9241/306/ed-2/index.html>

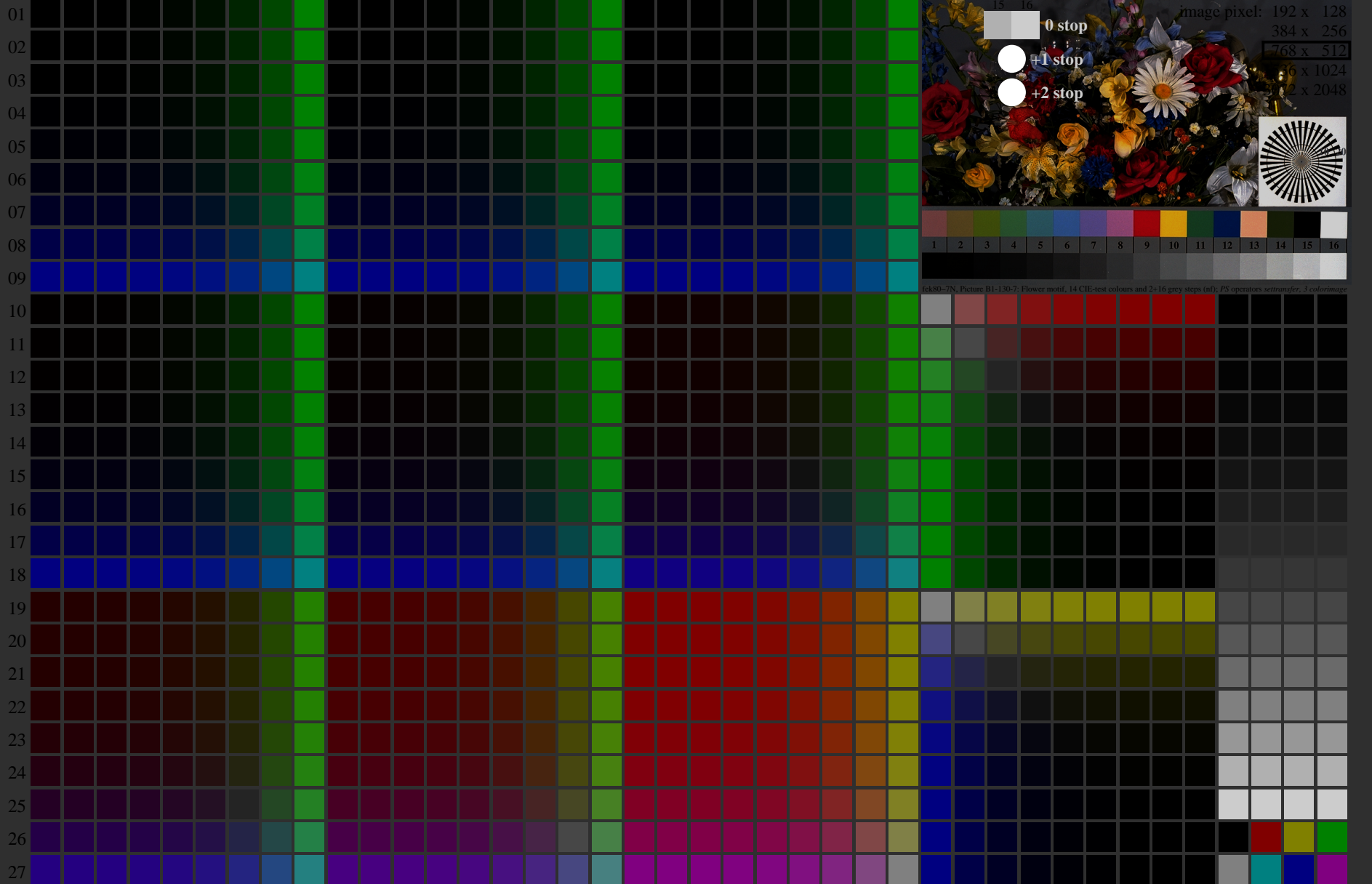
TUB registration: 20240301-fek8/fek810fa.txt/.ps
application for evaluation and measurement of display or print output
TUB material: code=rh4ta

fek80-7N, Page 1/16, Test chart 2G with 40x27=1080 colours; digital equidistant 9 or 16 step colour scales; Colour data in column (A-n): $rgb^*(A_n)$, $colorm = 1$, $xchart = 48$, $pchart = 0$

TUB-test chart fek8; fek8: Test chart uh_d08 with 40x27=1080 colours; 1MR, DH 000n/w/cmy0/rgb
Digital equidistant 9 or 16 step colour scales, L-HDR; $\gamma_R=0,80$
-> $rgb^*_d, 130-0$:

<http://farbe.li.tu-berlin.de/fek8/fek810fa.txt/.ps>; only vector graphic VG;
see separate images of this page: <http://farbe.li.tu-berlin.de/fek8/fek8.htm>

A B C D E F G H I J K L M N O P Q R S T U V W X Y Z a b c d e f g h i j k l m n



see similar files of the whole serie: <http://farbe.li.tu-berlin.de/feks.htm>
technical information: <http://farbe.li.tu-berlin.de/A/33872E.html>
or <http://standards.iso.org/iso/9241/306/ed-2/index.html>

TUB registration: 20240301-fek8/fek810fa.txt/.ps
application for evaluation and measurement of display or print output
TUB material: code=rh4ta

fek80-7N, Page 1/16, Test chart 2G with 40x27=1080 colours; digital equidistant 9 or 16 step colour scales; Colour data in column (A-n): $rgb^*(A_n)$, colorm = 1, xchart = 56, pchart = 0

TUB-test chart fek8; fek8: Test chart uh_d08 with 40x27=1080 colours; 1MR, DH 000n/w/cmy0/rgb
Digital equidistant 9 or 16 step colour scales, L-HDR; $\gamma_R=0,80$
-> $rgb^*_d, 130-0$: