

<http://farbe.li.tu-berlin.de/fek8/fek8l0na.txt> / .ps; only vector graphic VG; start output  
see separate images of this page: <http://farbe.li.tu-berlin.de/fek8/fek8.htm>

see similar files of the whole serie: <http://farbe.li.tu-berlin.de/fek8.htm>  
technical information: <http://farbe.li.tu-berlin.de/A/33872E.html>  
or <http://standards.iso.org/iso/9241/306/ed-2/index.html>

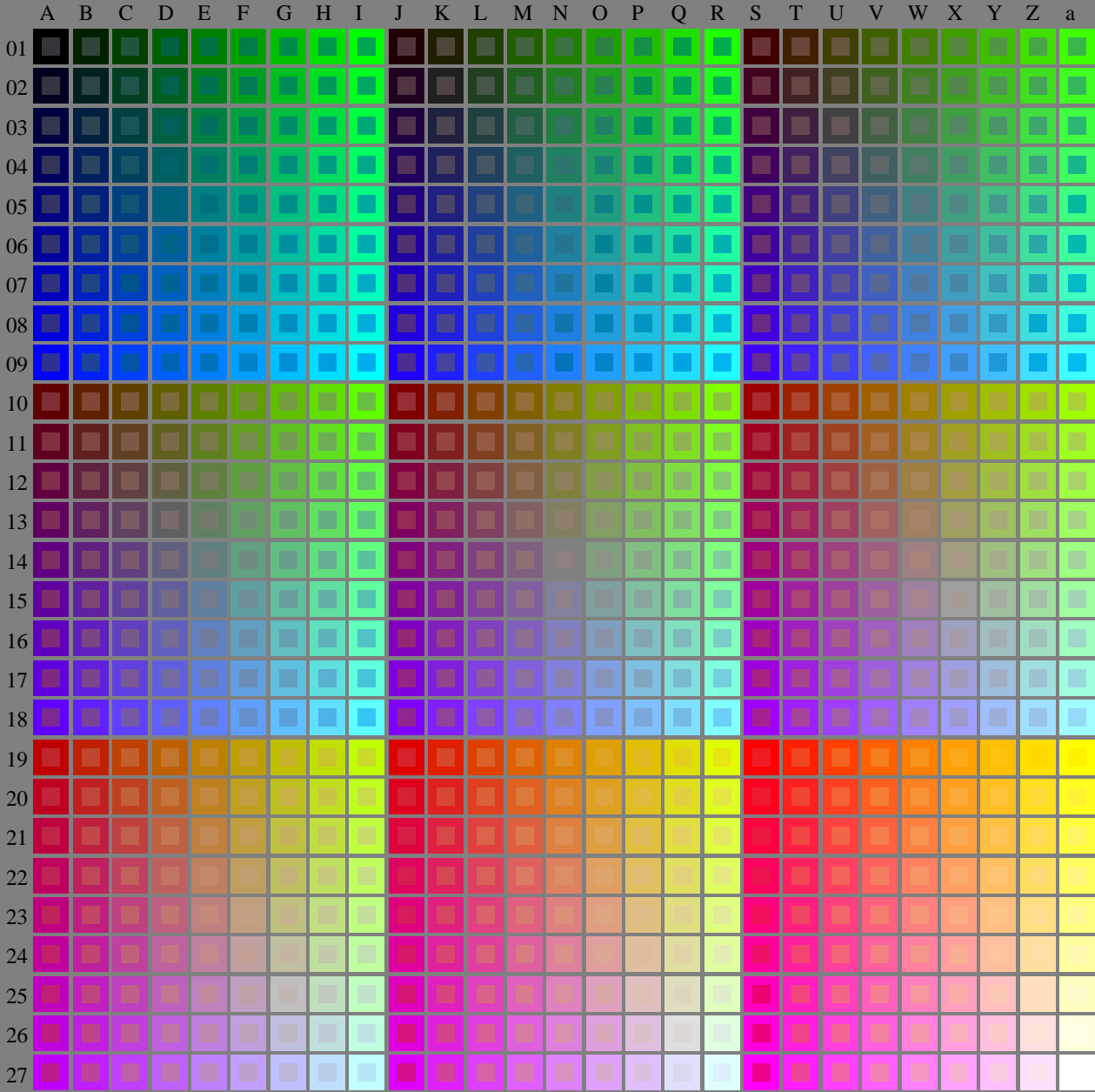


image pixel: 192 x 128  
384 x 256  
768 x 512  
1536 x 1024  
3072 x 2048

0 stop  
+1 stop  
+2 stop

1 2 3 4 5 6 7 8 9 10 11 12 13 14 15 16

fek80-7N, Picture B1-030-0: Flower motif, 14 CIE-test colours and 2+16 grey steps (nD); PS operators settransfer, 3 colorimage

TUB registration: 20240301-fek8/fek8l0na.txt / .ps  
application for evaluation and measurement of display or print output

TUB material: code=rh4ta

fek80-7N, Page 1/16, Test chart 2G with 40x27=1080 colours; digital equidistant 9 or 16 step colour scales; Colour data in column (A-n): rgb + cmy0 (A\_j + k26\_n27), 000n (k), w (l), nnn0 (m), www (n), colorm = 0, xchart = 0, pchart = 0

TUB-test chart fek8; fek8: Test chart uh\_d08 with 40x27=1080 colours; DH  
Digital equidistant 9 or 16 step colour scales, L-HDR;  $\gamma_R=0,80$   
000n/w/cmy0/rgb  
->rgb\*\_d, 030-0:

<http://farbe.li.tu-berlin.de/fek8/fek810na.txt> /ps; only vector graphic VG; start output  
see separate images of this page: <http://farbe.li.tu-berlin.de/fek8/fek8.htm>

TUB registration: 20240301-fek8/fek810na.txt /ps  
application for evaluation and measurement of display or print output

TUB material: code=rh4ta

Table with 28 rows (01-27) and 100 columns (A-Z, a-z). Each cell contains numerical data, likely representing color calibration values for different printing conditions.

fek80-70, Page 2/3, Test chart G with 10x27=1080 colors; digital equidistant 9 or 16 step colour scales; Colour data in column (A-n): rgb (A\_j + k26\_n27), 000n (k), w (l), nnn0 (m), www (n), colch = 0, xchar = 0, pchar = 1

TUB-test chart fek8: fek8 Test chart uh\_d08 with 40x27=1080 colors; Digital equidistant 9 or 16 step colour scales, L-HDR;  $\gamma_R=0,80$

000n/w/cmy0/rgb  
->rgb\*d, 030:1:

see similar files of the whole serie: <http://farbe.li.tu-berlin.de/feks.htm>  
 technical information: <http://farbe.li.tu-berlin.de/A/33872E.htm>  
 or <http://standards.iso.org/iso/9241/306/ed-2/index.html>

TUB registration: 20240301-fek8/fek810na.txt /ps  
 application for evaluation and measurement of display or print output  
 TUB material: code=rh4ta

i	LAB*ref	l*out	LAB*out	LAB*out/c-ref	$\Delta E^*$
1	0.0	0.0	0.0	0.0	0.01
2	6.36	0.0	0.07	6.36	0.01
3	12.72	0.0	0.13	12.72	0.01
4	19.08	0.0	0.2	19.08	0.01
5	25.44	0.0	0.27	25.44	0.01
6	31.8	0.0	0.33	31.8	0.01
7	38.16	0.0	0.4	38.16	0.01
8	44.52	0.0	0.47	44.52	0.01
9	50.89	0.0	0.53	50.89	0.01
10	57.25	0.0	0.6	57.25	0.01
11	63.61	0.0	0.67	63.61	0.01
12	69.97	0.0	0.73	69.97	0.01
13	76.33	0.0	0.8	76.33	0.01
14	82.69	0.0	0.87	82.69	0.01
15	89.05	0.0	0.93	89.05	0.01
16	95.41	0.0	1.0	95.41	0.01
17	0.0	0.0	0.0	0.0	0.01
18	23.85	0.0	0.25	23.85	0.01
19	47.71	0.0	0.5	47.71	0.01
20	71.56	0.0	0.75	71.56	0.01
21	95.41	0.0	1.0	95.41	0.01

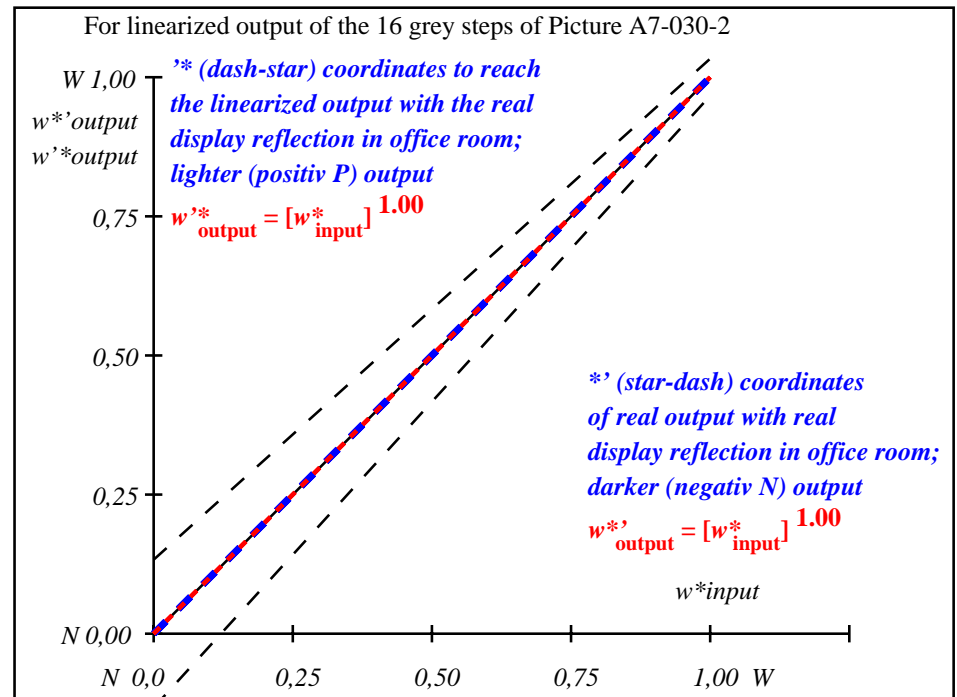
**Start output S1**  
**Specification according to ISO/IEC 15775 Annex G and DIN 33866-1 Annex G**

Mean lightness difference (16 steps)  
 $\Delta E^*_{CIELAB} = 0.0$

Mean lightness difference (5 steps)  
 $\Delta L^*_{CIELAB} = 0.0$

Mean colour reproduction index:  $R^*_{ab,m} = 100$

fek80-3N-030-2: File: Measure unknown; Device: Device unknown; Date: Date unknown



fek81-3N-030-2: File: Measure unknown; Device: Device unknown; Date: Date unknown

$L^*/Y^*_{intended}$ (absolute)	0.0/0.0	6.4/0.7	12.7/1.5	19.1/2.8	25.4/4.6	31.8/7.0	38.2/10.2	44.5/14.2	50.9/19.2	57.2/25.2	63.6/32.3	70.0/40.7	76.3/50.4	82.7/61.6	89.0/74.3	95.4/88.6
$w^*_{setrgb}$	00;F	01;E	02;D	03;C	04;B	05;A	06;9	07;8	08;7	09;6	10;5	11;4	12;3	13;2	14;1	15;0
$w^*_{CIELAB,r}$ (relative)	0,000	0,067	0,133	0,200	0,267	0,333	0,400	0,467	0,533	0,600	0,667	0,733	0,800	0,867	0,933	1,000
$w^*_{intended}$	0.0	0.067	0.133	0.2	0.267	0.333	0.4	0.467	0.533	0.6	0.667	0.733	0.8	0.867	0.933	1.0
$w^*_{out}$	0.0	0.067	0.133	0.2	0.267	0.333	0.4	0.467	0.533	0.6	0.667	0.733	0.8	0.867	0.933	1.0

fek80-7N-030-2: 16 visual equidistant  $L^*$ -grey steps; PS operator:  $w^*_{setrgbcolor}$

TUB-test chart fek8; fek8: In-output relation according to ISO 9241-306; DH 000n/w/cmy0/rgb  
 Viewing Y contrast  $Y_W:Y_N=88,9:0,31$ ;  $Y_N$  range 0,0 to <0,46, L-HDR;  $\gamma_R=0,80$  ->rgb\*d, 030-2: