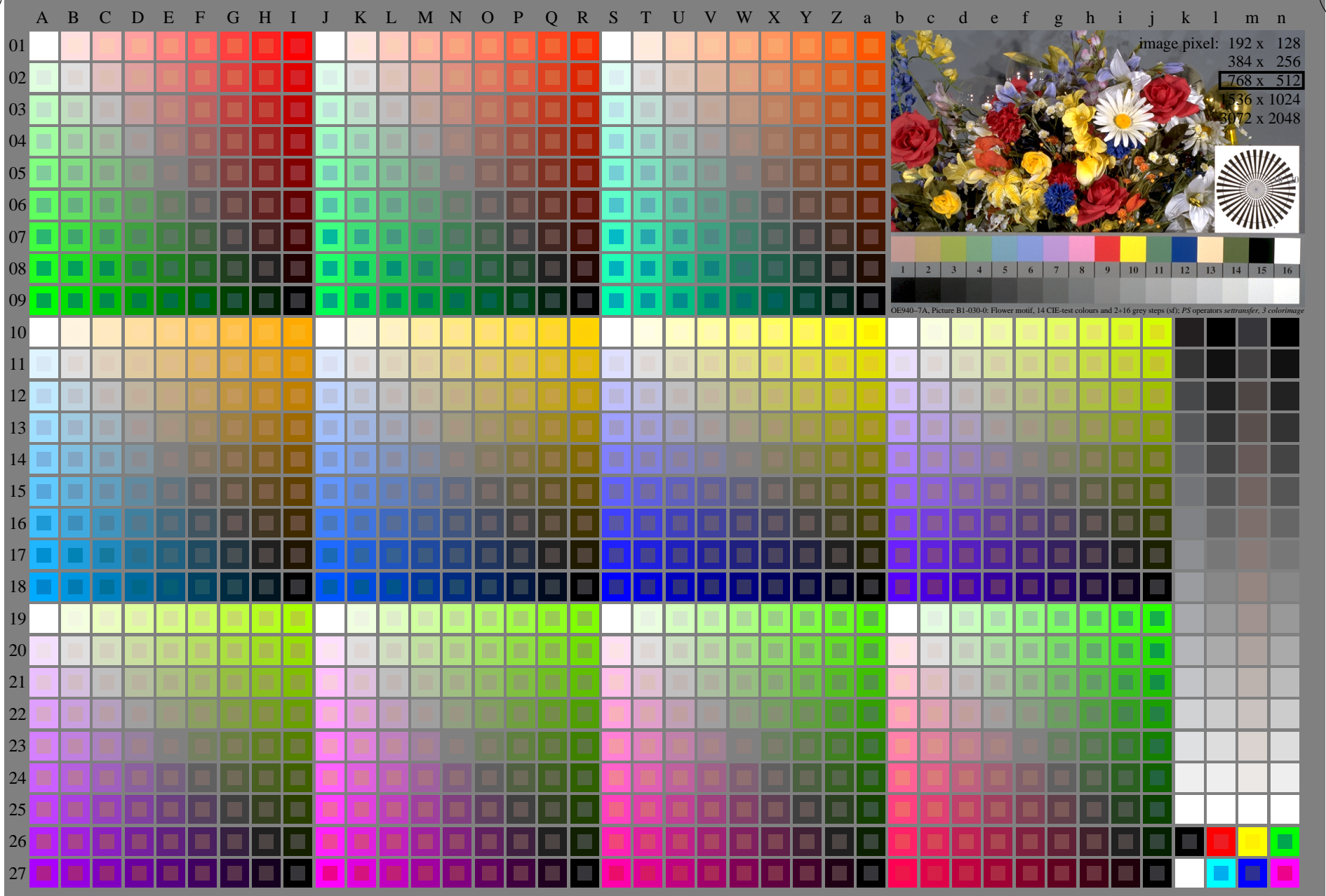


<http://farbe.li.tu-berlin.de/fei9/fei910np.pdf> /.ps; only vector graphic VG; start output
see separate images of this page: <http://farbe.li.tu-berlin.de/fei9/fei9.htm>

see similar files of the whole series: <http://farbe.li.tu-berlin.de/feis.htm>
technical information: <http://farbe.li.tu-berlin.de/A/33872E.html>
or <http://standards.iso.org/iso/9241/306/ed-2/index.html>



fei90-7N, Page 1/16, Test chart 2E with 40x27=1080 colours; digital equidistant 9 or 16 step colour scales; Colour data in column (A-n): rgb + cmy0 (A_j + k26_n27), 000n (k), w (l), nnn0 (m), www (n), colorm = 0, xchart = 0, pchart = 0

TUB-test chart fei9; fei9: Test chart 2e_ei with 40x27=1080 colours; DH
Digital equidistant 9 or 16 step colour scales

000n/w/cmy0/rgb
->rgb*_d, 030-0:

TUB registration: 20240301-fei9/fei910np.pdf /.ps
application for evaluation and measurement of display or print output
TUB material: code=rh4ta

http://farbe.li.tu-berlin.de/fei910np.pdf / .ps; only vector graphic VG; start output see separate images of this page: http://farbe.li.tu-berlin.de/fei9/fei9.htm

see similar files of the whole serie: http://farbe.li.tu-berlin.de/feis.htm technical information: http://farbe.li.tu-berlin.de/A/33872E.html or http://standards.iso.org/iso/9241/306/ed-2/index.html

TUB registration: 20240310 - fei9/fei910np.pdf / .ps application for evaluation and measurement of display or print output TUB material: code=rha4ta

Table with 26 columns (A-Z) and 26 rows (01-26). Each cell contains a 26-character string representing color data for a specific color and position.

fei90-70, Page 2/16, Test chart G with 40x27=1080 colours; digital equidistant 9 or 16 step colour scales; Colour data in column (A-n): rgb (A_j + k26_n27), 000n (k), w (l), nnn0 (m), www (n), colorm = w, xchar = 0, pchar = 1

TUB-test chart fei9; Test chart 2e_ei with 40x27=1080 colours; DH 000n w/cmy0/rgb Digital equidistant 9 or 16 step colour scales ->rgb*d, 030-1:

<http://farbe.li.tu-berlin.de/fei9/fei910np.pdf/.ps>; only vector graphic VG; start output
 see separate images of this page: <http://farbe.li.tu-berlin.de/fei9/fei9.htm>

see similar files of the whole series: <http://farbe.li.tu-berlin.de/feis.htm>
 technical information: <http://farbe.li.tu-berlin.de/A/33872E.html>
 or <http://standards.iso.org/iso/9241/306/ed-2/index.html>

TUB registration: 20240301-fei9/fei910np.pdf/.ps
 application for evaluation and measurement of display or print output
 TUB material: code=rhatha

i	LAB*ref	l*out	LAB*out	LAB*out/c-ref	ΔE^*
1	0.0	0.0	0.0	0.0	0.0
2	6.36	0.0	0.07	6.36	0.0
3	12.72	0.0	0.13	12.72	0.0
4	19.08	0.0	0.2	19.08	0.0
5	25.44	0.0	0.27	25.44	0.0
6	31.8	0.0	0.33	31.8	0.0
7	38.16	0.0	0.4	38.16	0.0
8	44.52	0.0	0.47	44.52	0.0
9	50.89	0.0	0.53	50.89	0.0
10	57.25	0.0	0.6	57.25	0.0
11	63.61	0.0	0.67	63.61	0.0
12	69.97	0.0	0.73	69.97	0.0
13	76.33	0.0	0.8	76.33	0.0
14	82.69	0.0	0.87	82.69	0.0
15	89.05	0.0	0.93	89.05	0.0
16	95.41	0.0	1.0	95.41	0.0
17	0.0	0.0	0.0	0.0	0.0
18	23.85	0.0	0.25	23.85	0.0
19	47.71	0.0	0.5	47.71	0.0
20	71.56	0.0	0.75	71.56	0.0
21	95.41	0.0	1.0	95.41	0.0

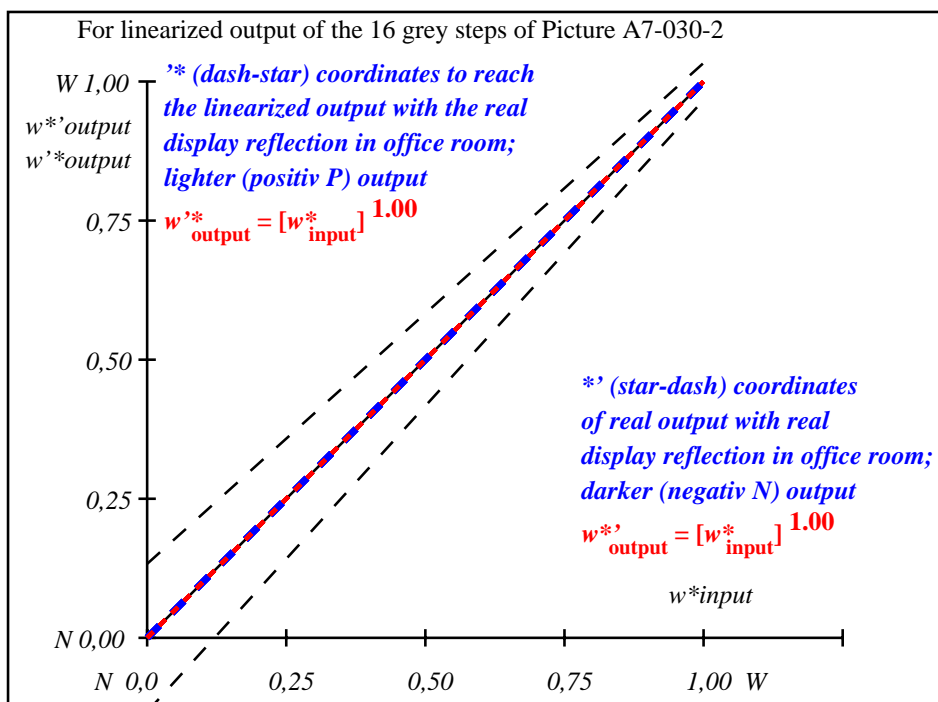
Start output S1
Specification according to ISO/IEC 15775 Annex G and DIN 33866-1 Annex G

Mean lightness difference (16 steps)
 $\Delta E^*_{CIELAB} = 0.0$

Mean lightness difference (5 steps)
 $\Delta L^*_{CIELAB} = 0.0$

Mean colour reproduction index: $R^*_{ab,m} = 100$

fei90-3A-030-2: File: Measure unknown; Device: Device unknown; Date: Date unknown



fei91-3N-030-2: File: Measure unknown; Device: Device unknown; Date: Date unknown

$L^*/Y^*_{intended}$ (absolute)	0.0/0.0	6.4/0.7	12.7/1.5	19.1/2.8	25.4/4.6	31.8/7.0	38.2/10.2	44.5/14.2	50.9/19.2	57.2/25.2	63.6/32.3	70.0/40.7	76.3/50.4	82.7/61.6	89.0/74.3	95.4/88.6
$w^* w^* w^*$ setrgb gp=1.00																
No. and Hex code	00;F	01;E	02;D	03;C	04;B	05;A	06;9	07;8	08;7	09;6	10;5	11;4	12;3	13;2	14;1	15;0
$w^* = L^*_{CIELAB,r}$ (relative)																
$w^*_{intended}$	0,000	0,067	0,133	0,200	0,267	0,333	0,400	0,467	0,533	0,600	0,667	0,733	0,800	0,867	0,933	1,000
w^*_{out}	0,0	0,067	0,133	0,2	0,267	0,333	0,4	0,467	0,533	0,6	0,667	0,733	0,8	0,867	0,933	1,0

fei90-7N, Picture A7-030-2: 16 visual equidistant L^* -grey steps; PS operator: $w^* w^* w^*$ setrgbcolor

TUB-test chart fei9; In-output relation according to ISO 9241-306; DH
 Viewing Y contrast $Y_W:Y_N=88,9:0,31$; Y_N range 0,0 to <0,46

000n/w/cmy0/rgb
 ->rgb*_d, 030-2:

