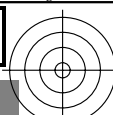
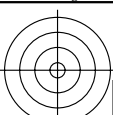
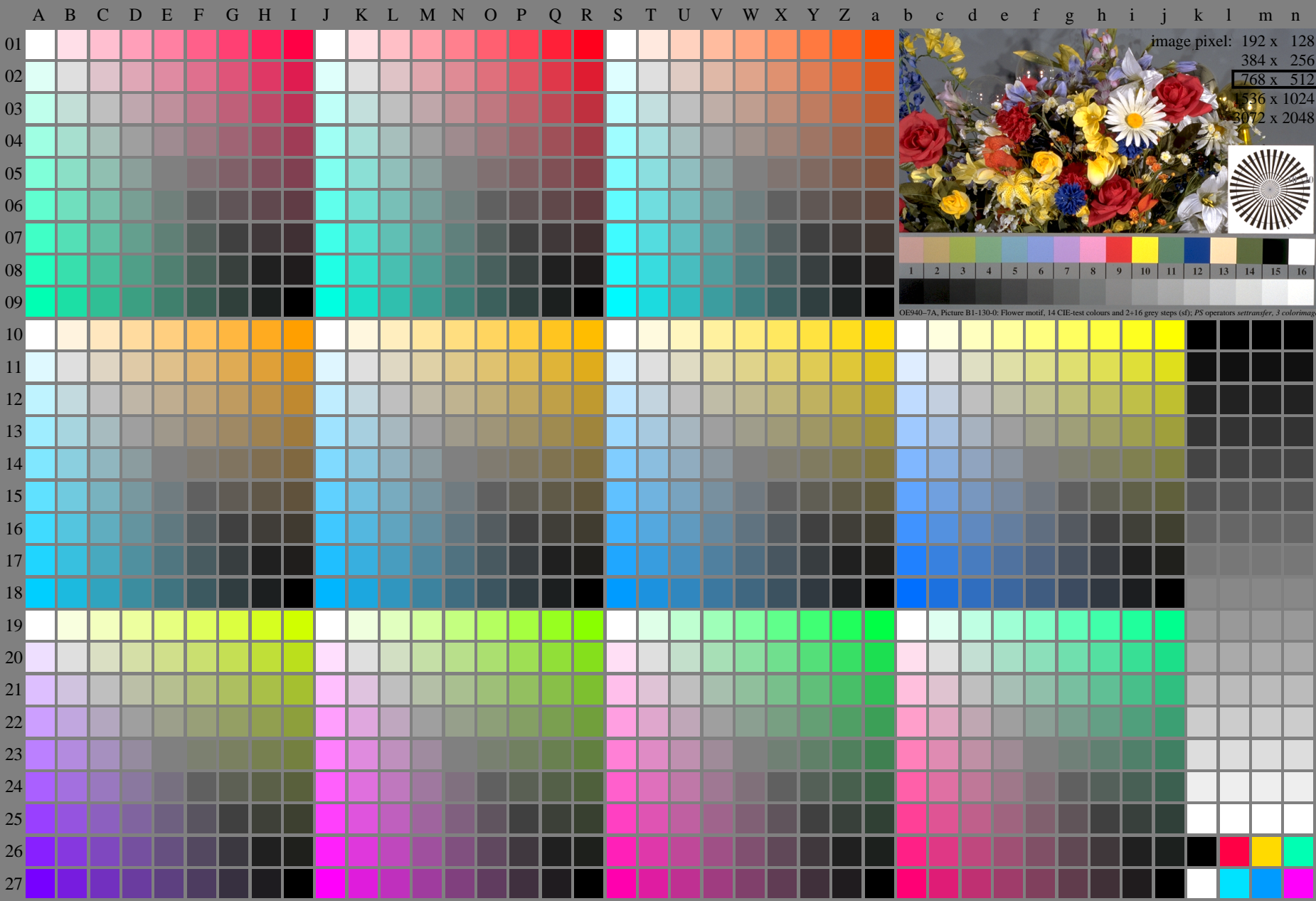


<http://farbe.li.tu-berlin.de/fei9/fei910fa.txt> /ps; only vector graphic VG; start output
see separate images of this page: <http://farbe.li.tu-berlin.de/fei9/fei9.htm>



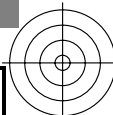
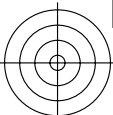
see similar files of the whole serie: <http://farbe.li.tu-berlin.de/feis.htm>
technical information: <http://farbe.li.tu-berlin.de/A/33872E.html>
or <http://standards.iso.org/iso/9241/306/ed-2/index.html>

TUB registration: 20240301-fei9/fei910fa.txt /ps
application for evaluation and measurement of display or print output
TUB material: code=rh4ta

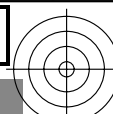
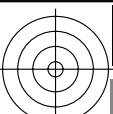


fei90-7N, Page 1/16, Test chart 2E with 40x27=1080 colours; digital equidistant 9 or 16 step colour scales; Colour data in column (A-n): rgb^*_{de} (A_n), colormap = 1, xchart = 0, pchart = 0

TUB-test chart fei9; fei9: Test chart 2e_ei with 40x27=1080 colours; 1MR, DEH 000n/w/cmy0/rgb
Digital equidistant 9 or 16 step colour scales $\rightarrow rgb^*_{de}$, 130-0:

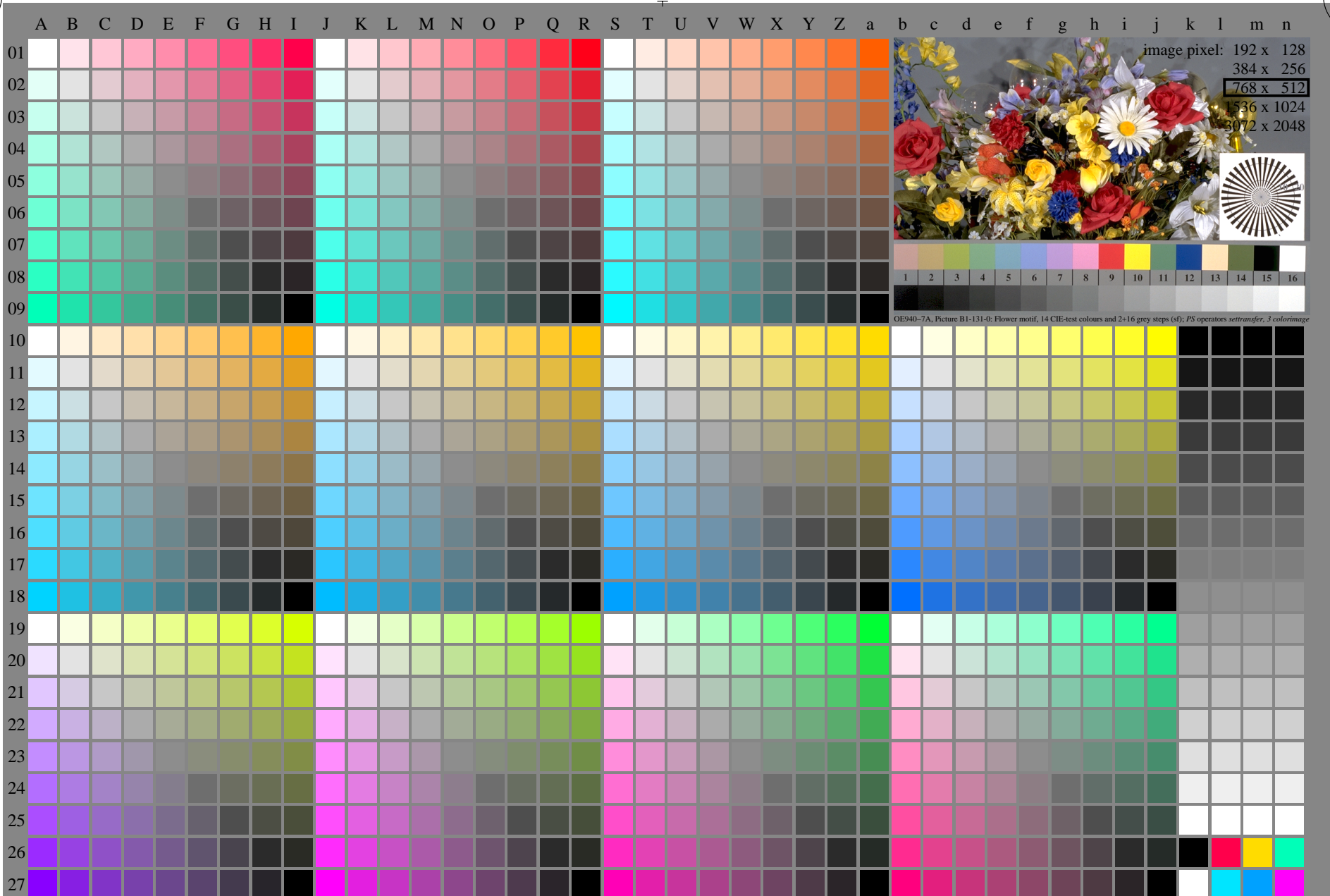


<http://farbe.li.tu-berlin.de/fei9/fei910fa.txt> /.ps; only vector graphic VG;
see separate images of this page: <http://farbe.li.tu-berlin.de/fei9/fei9.htm>



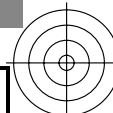
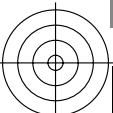
see similar files of the whole series: <http://farbe.li.tu-berlin.de/feis.htm>
technical information: <http://farbe.li.tu-berlin.de/A/33872E.html>
or <http://standards.iso.org/iso/9241/306/ed-2/index.html>

TUB registration: 20240301-fei9/fei910fa.txt /.ps
application for evaluation and measurement of display or print output
TUB material: code=rh4ta

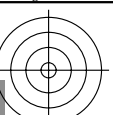
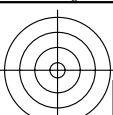


fei90-7N, Page 1/16, Test chart 2E with 40x27=1080 colours; digital equidistant 9 or 16 step colour scales; Colour data in column (A-n): $rgb^*_{(A_n)}$, $colorm = 1$, $xchart = 1$, $pchart = 0$

TUB-test chart fei9; fei9: Test chart 2e_ei with 40x27=1080 colours; 1MR, DEH 000n/w/cmy0/rgb
Digital equidistant 9 or 16 step colour scales $\rightarrow rgb^*_{de}$, 131-0:



<http://farbe.li.tu-berlin.de/fei9/fei910fa.txt> /.ps; only vector graphic VG;
see separate images of this page: <http://farbe.li.tu-berlin.de/fei9/fei9.htm>



C

M

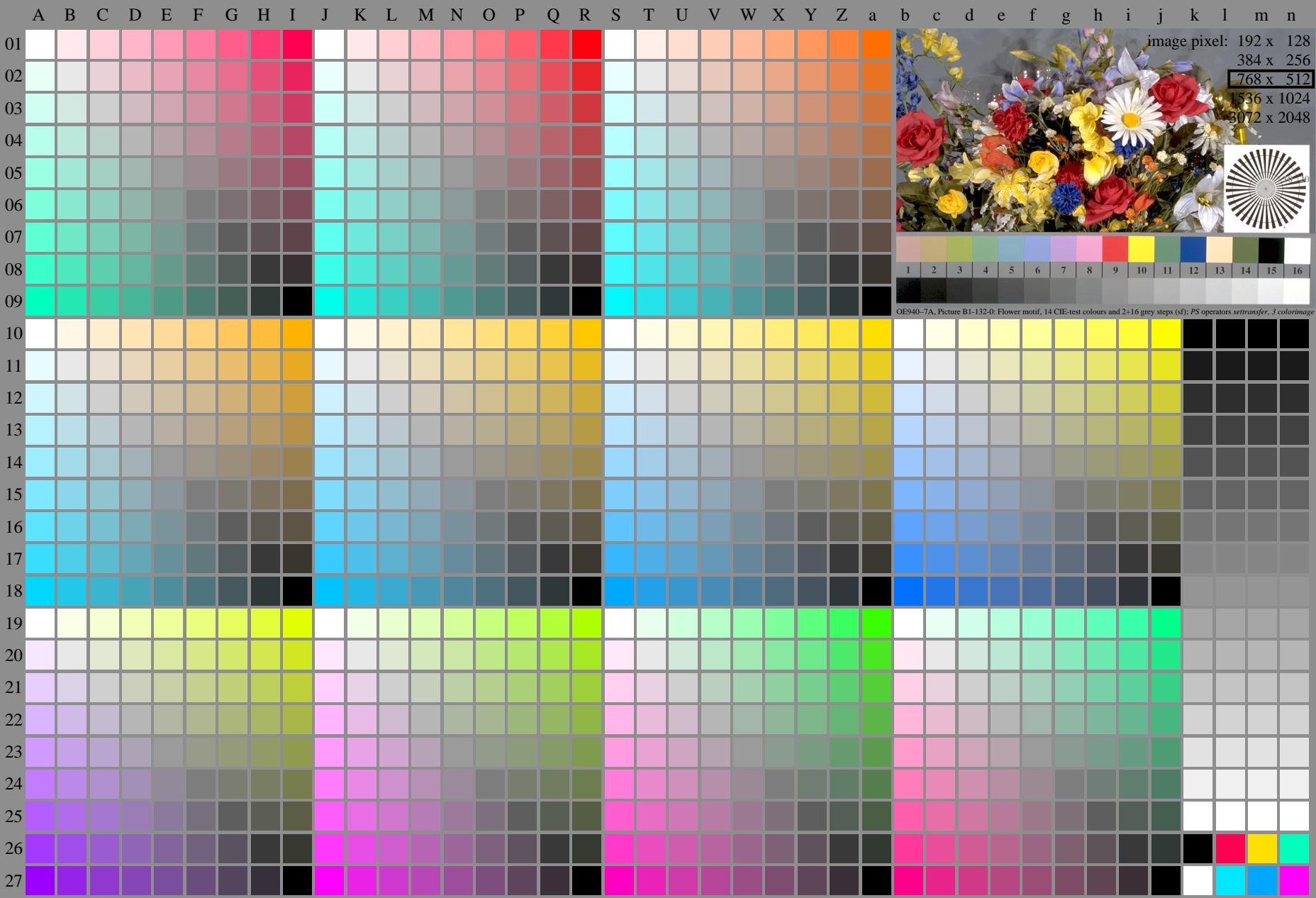
Y

O

L

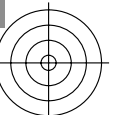
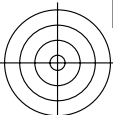
V

see similar files of the whole serie: <http://farbe.li.tu-berlin.de/feis.htm>
technical information: <http://farbe.li.tu-berlin.de/A/33872E.html>
or <http://standards.iso.org/iso/9241/306/ed-2/index.html>



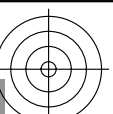
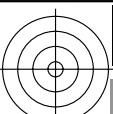
TUB registration: 20240301-fei9/fei910fa.txt /.ps
application for evaluation and measurement of display or print output
TUB material: code=rh4ta

fei90-7N, Page 1/16, Test chart 2E with 40x27=1080 colours; digital equidistant 9 or 16 step colour scales; Colour data in column (A-n): $rgb^*_{(A_n)}$, $colorm = 1$, $xchart = 2$, $pchart = 0$



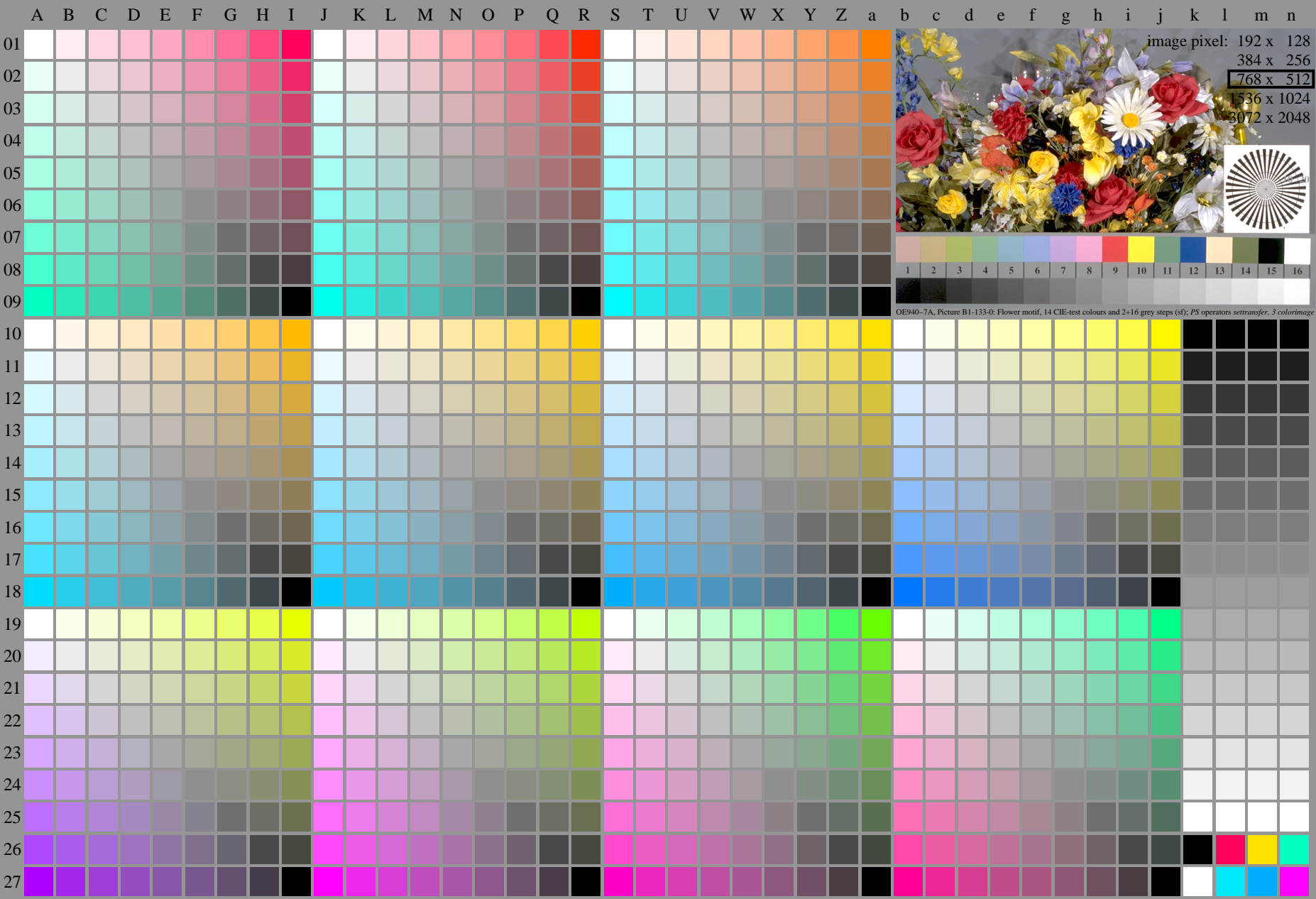
TUB-test chart fei9; fei9: Test chart 2e_ei with 40x27=1080 colours; 1MR, DEH 000n/w/cmy0/rgb
Digital equidistant 9 or 16 step colour scales $\rightarrow rgb^*_{de}$, 132-0:

<http://farbe.li.tu-berlin.de/fei9/fei910fa.txt> /.ps; only vector graphic VG;
see separate images of this page: <http://farbe.li.tu-berlin.de/fei9/fei9.htm>



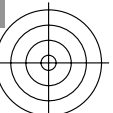
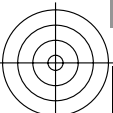
see similar files of the whole series: <http://farbe.li.tu-berlin.de/feis.htm>
technical information: <http://farbe.li.tu-berlin.de/A/33872E.html>
or <http://standards.iso.org/iso/9241/306/ed-2/index.html>

TUB registration: 20240301-fei9/fei910fa.txt /.ps
application for evaluation and measurement of display or print output
TUB material: code=rh4ta



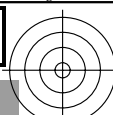
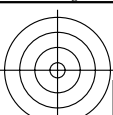
fei90-7N, Page 1/16, Test chart 2E with 40x27=1080 colours; digital equidistant 9 or 16 step colour scales; Colour data in column (A-n): $rgb^*_{A_n}$, $color_m = 1$, $xchart = 3$, $pchart = 0$

TUB-test chart fei9; fei9: Test chart 2e_ei with 40x27=1080 colours; 1MR, DEH 000n/w/cmy0/rgb
Digital equidistant 9 or 16 step colour scales $\rightarrow rgb^*_{de}$, 133-0:

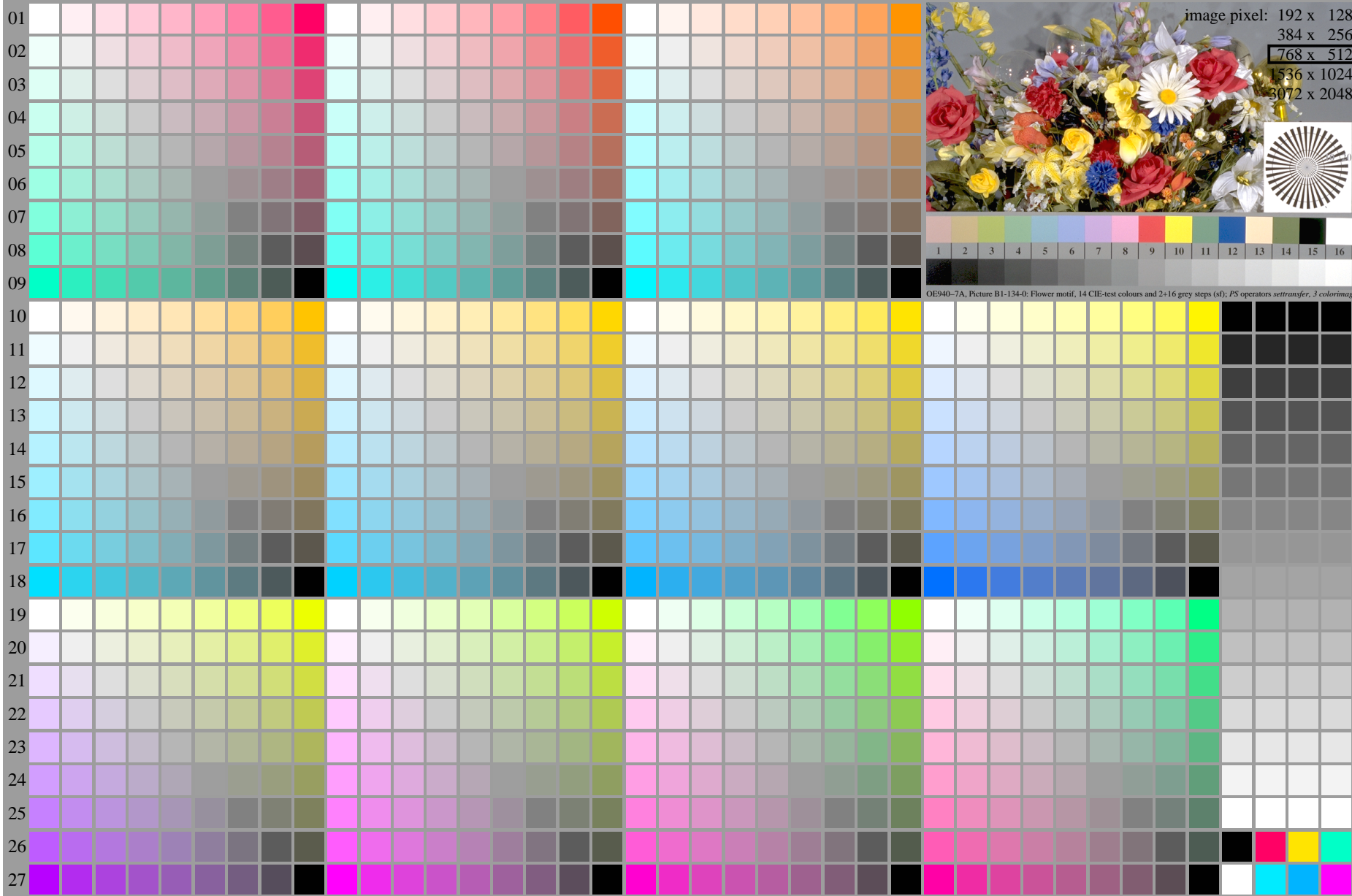


l=1330

<http://farbe.li.tu-berlin.de/fei9/fei910fa.txt> /.ps; only vector graphic VG;
see separate images of this page: <http://farbe.li.tu-berlin.de/fei9/fei9.htm>



A B C D E F G H I J K L M N O P Q R S T U V W X Y Z a b c d e f g h i j k l m n



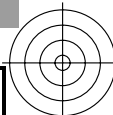
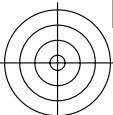
see similar files of the whole serie: <http://farbe.li.tu-berlin.de/feis.htm>
technical information: <http://farbe.li.tu-berlin.de/A/33872E.html>
or <http://standards.iso.org/iso/9241/306/ed-2/index.html>

TUB registration: 20240301-fei9/fei910fa.txt /.ps
application for evaluation and measurement of display or print output

TUB material: code=rh4ta

fei90-7N, Page 1/16, Test chart 2E with 40x27=1080 colours; digital equidistant 9 or 16 step colour scales; Colour data in column (A-n): rgb^*_{de} (A-n), colormap = 1, xchart = 4, pchart = 0

TUB-test chart fei9; fei9: Test chart 2e_ei with 40x27=1080 colours; 1MR, DEH 000n/w/cmy0/rgb
Digital equidistant 9 or 16 step colour scales $\rightarrow rgb^*_{de}$, 134-0:



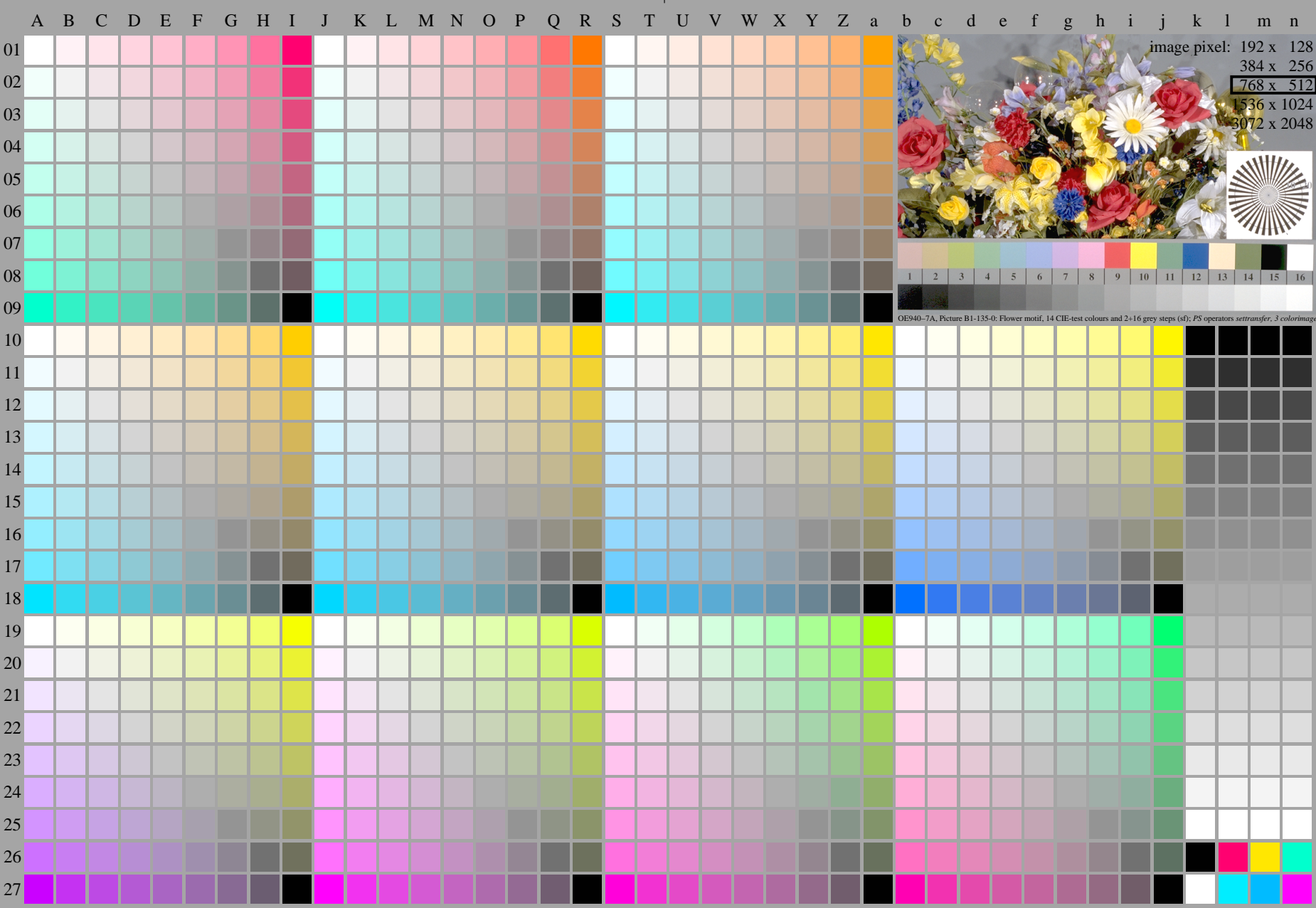
<http://farbe.li.tu-berlin.de/fei9/fei910fa.txt> /.ps; only vector graphic VG;
see separate images of this page: <http://farbe.li.tu-berlin.de/fei9/fei9.htm>



see similar files of the whole serie: <http://farbe.li.tu-berlin.de/feis.htm>
technical information: <http://farbe.li.tu-berlin.de/A/33872E.html>
or <http://standards.iso.org/iso/9241/306/ed-2/index.html>

TUB registration: 20240301-fei9/fei910fa.txt /.ps
application for evaluation and measurement of display or print output

TUB material: code=rh4ta

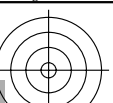
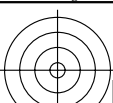


fei90-7N, Page 1/16, Test chart 2E with 40x27=1080 colours; digital equidistant 9 or 16 step colour scales; Colour data in column (A-n): rgb^*_n (A_n), $color_m = 1$, $xchart = 5$, $pchart = 0$

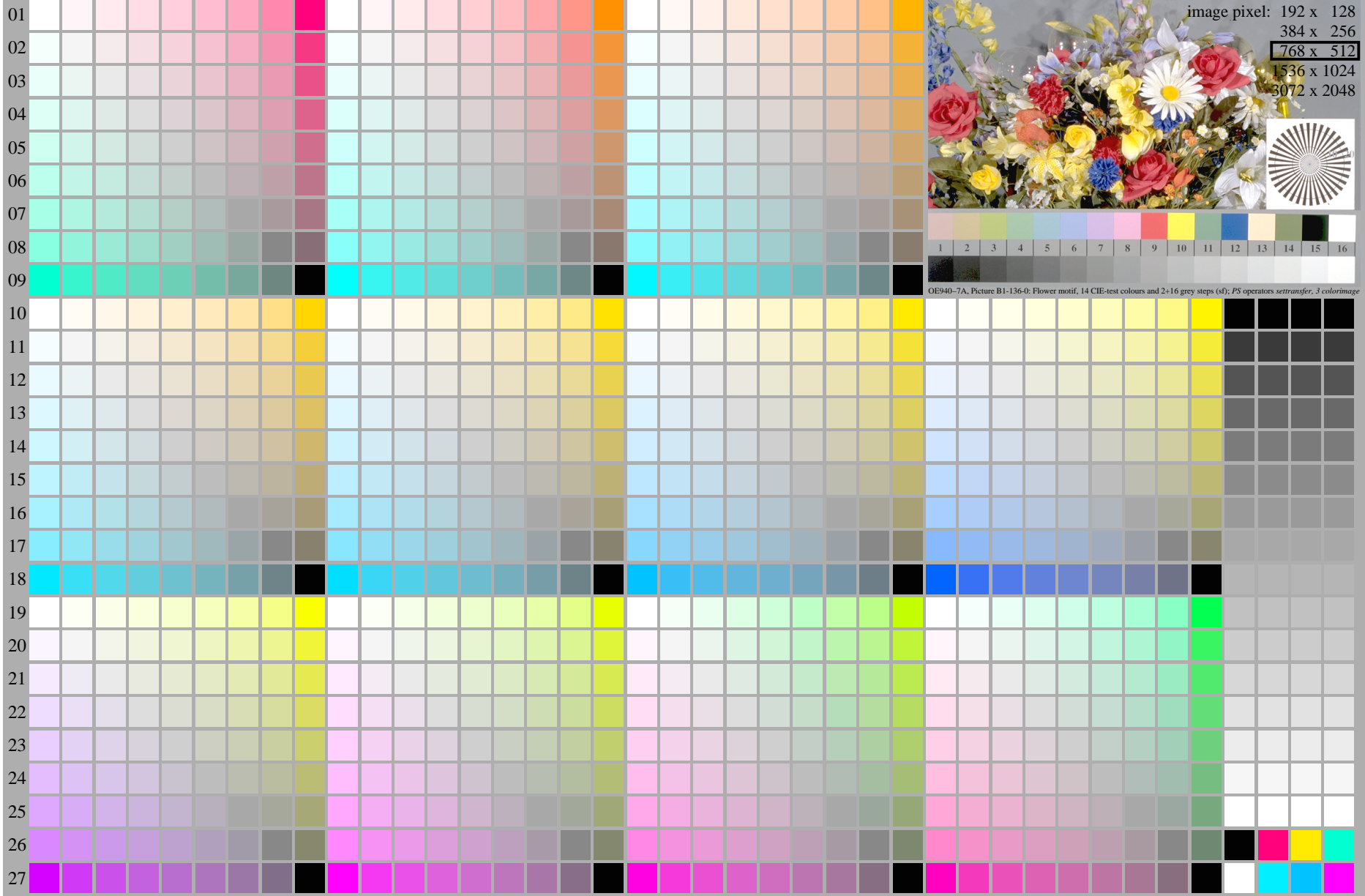
TUB-test chart fei9; fei9: Test chart 2e_ei with 40x27=1080 colours; 1MR, DEH 000n/w/cmy0/rgb
Digital equidistant 9 or 16 step colour scales $\rightarrow rgb^*_{de}$, 135-0:



<http://farbe.li.tu-berlin.de/fei9/fei910fa.txt> /.ps; only vector graphic VG;
see separate images of this page: <http://farbe.li.tu-berlin.de/fei9/fei9.htm>



A B C D E F G H I J K L M N O P Q R S T U V W X Y Z a b c d e f g h i j k l m n

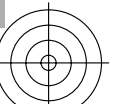
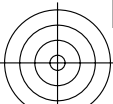


see similar files of the whole serie: <http://farbe.li.tu-berlin.de/feis.htm>
technical information: <http://farbe.li.tu-berlin.de/A/33872E.html>
or <http://standards.iso.org/iso/9241/306/ed-2/index.html>

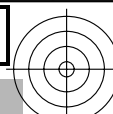
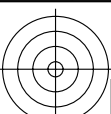
TUB registration: 20240301-fei9/fei910fa.txt /.ps
application for evaluation and measurement of display or print output
TUB material: code=rh4ta

fei90-7N, Page 1/16, Test chart 2E with 40x27=1080 colours; digital equidistant 9 or 16 step colour scales; Colour data in column (A-n): rgb^*_A , $color_m = 1$, $xchart = 6$, $pchart = 0$

TUB-test chart fei9; fei9: Test chart 2e_ei with 40x27=1080 colours; 1MR, DEH 000n/w/cmy0/rgb
Digital equidistant 9 or 16 step colour scales $\rightarrow rgb^*_{de}$, 136-0:



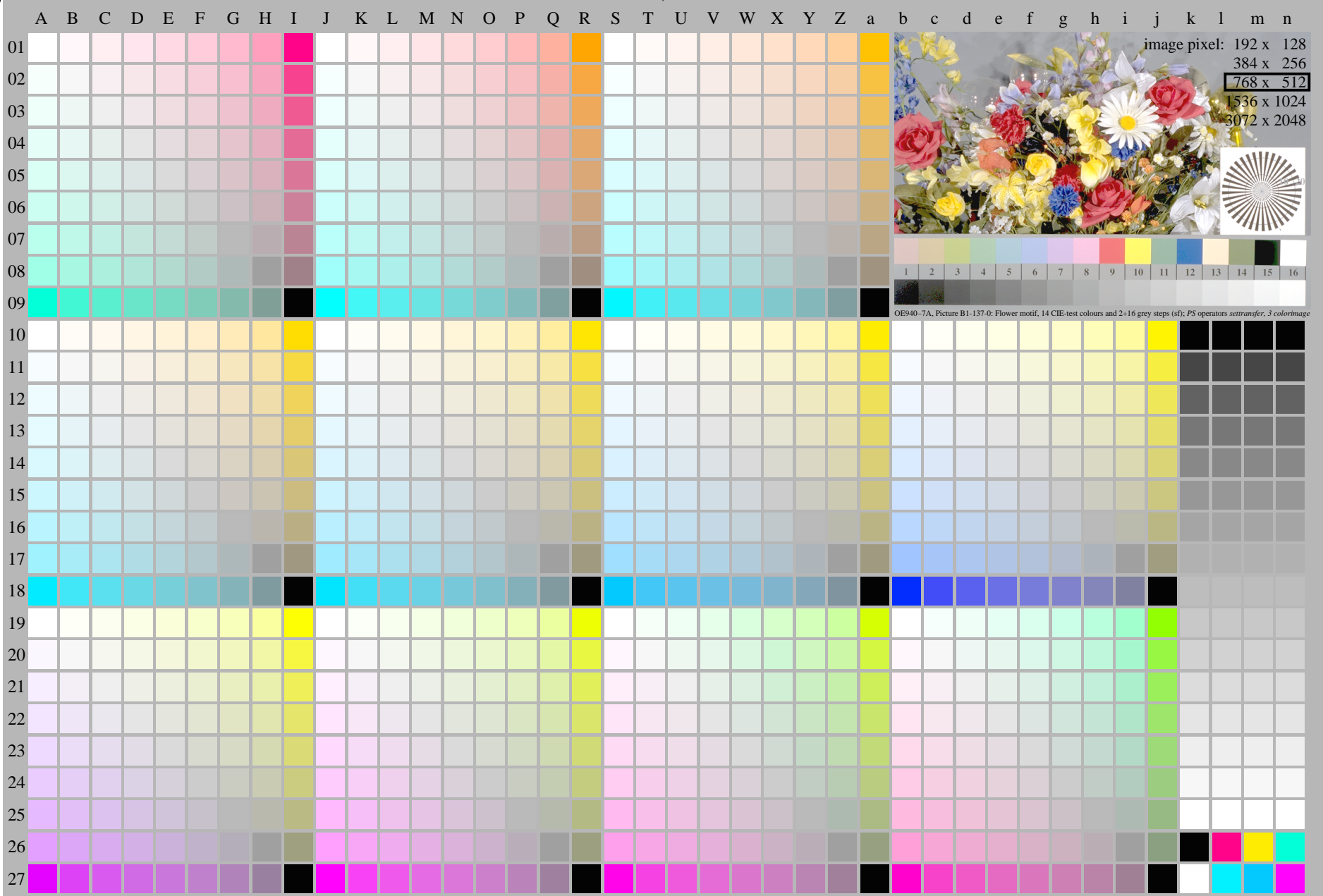
<http://farbe.li.tu-berlin.de/fei9/fei910fa.txt> /.ps; only vector graphic VG;
see separate images of this page: <http://farbe.li.tu-berlin.de/fei9/fei9.htm>



see similar files of the whole serie: <http://farbe.li.tu-berlin.de/feis.htm>
technical information: <http://farbe.li.tu-berlin.de/A/33872E.html>
or <http://standards.iso.org/iso/9241/306/ed-2/index.html>

TUB registration: 20240301-fei9/fei910fa.txt /.ps
application for evaluation and measurement of display or print output

TUB material: code=rh4ta



fei90-7N, Page 1/16, Test chart 2E with 40x27=1080 colours; digital equidistant 9 or 16 step colour scales; Colour data in column (A-n): rgb^*_A , $color_m = 1$, $xchart = 7$, $pchart = 0$

TUB-test chart fei9; fei9: Test chart 2e_ei with 40x27=1080 colours; 1MR, DEH 000n/w/cmy0/rgb
Digital equidistant 9 or 16 step colour scales $\rightarrow rgb^*_{de}$, 137-0:

