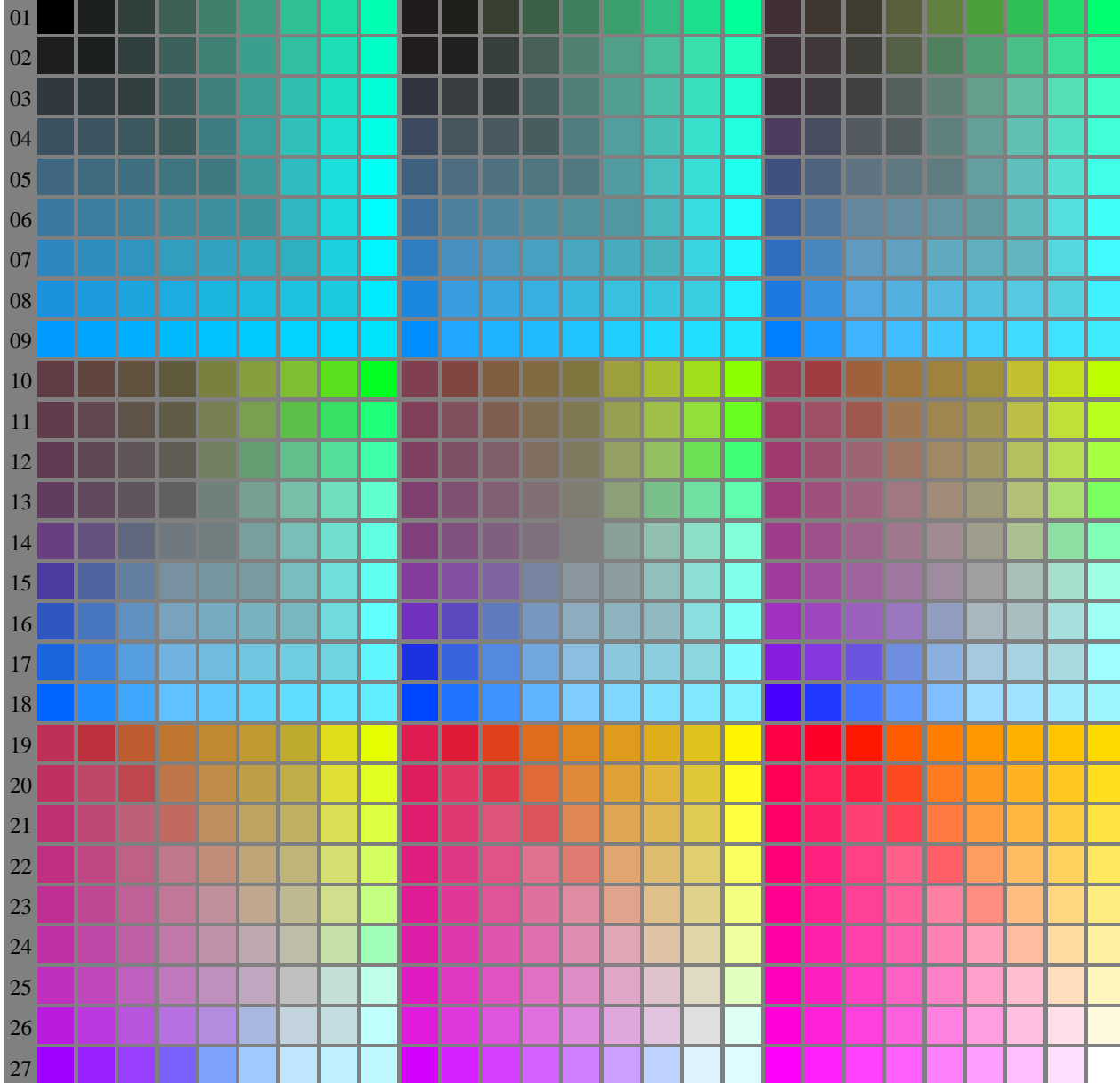


<http://farbe.li.tu-berlin.de/fei8/fei810fa.txt> /.ps; only vector graphic VG; start output  
see separate images of this page: <http://farbe.li.tu-berlin.de/fei8/fei8.htm>



A B C D E F G H I J K L M N O P Q R S T U V W X Y Z a b c d e f g h i j k l m n



fei80-7N, Picture B1-130-0: Flower motif, 14 CIE-test colours and 2x16 grey steps (n); PS operators settransfer, 3 colorimage

see similar files of the whole serie: <http://farbe.li.tu-berlin.de/feis.htm>  
technical information: <http://farbe.li.tu-berlin.de/A/33872E.html>  
or <http://standards.iso.org/iso/9241/306/ed-2/index.html>

TUB registration: 20240301-fei8/fei810fa.txt /.ps  
application for evaluation and measurement of display or print output  
TUB material: code=rh4ta

fei80-7N, Page 1/16, Test chart 2G with 40x27=1080 colours; digital equidistant 9 or 16 step colour scales; Colour data in column (A-n):  $rgb^* (A_n)$ , colorm = 1, xchart = 0, pchart = 0

TUB-test chart fei8; fei8: Test chart 2g\_ei with 40x27=1080 colours; 1MR, DEH 000n/w/cmy0/rgb  
Digital equidistant 9 or 16 step colour scales  $\rightarrow rgb^*_{de}$ , 130-0:

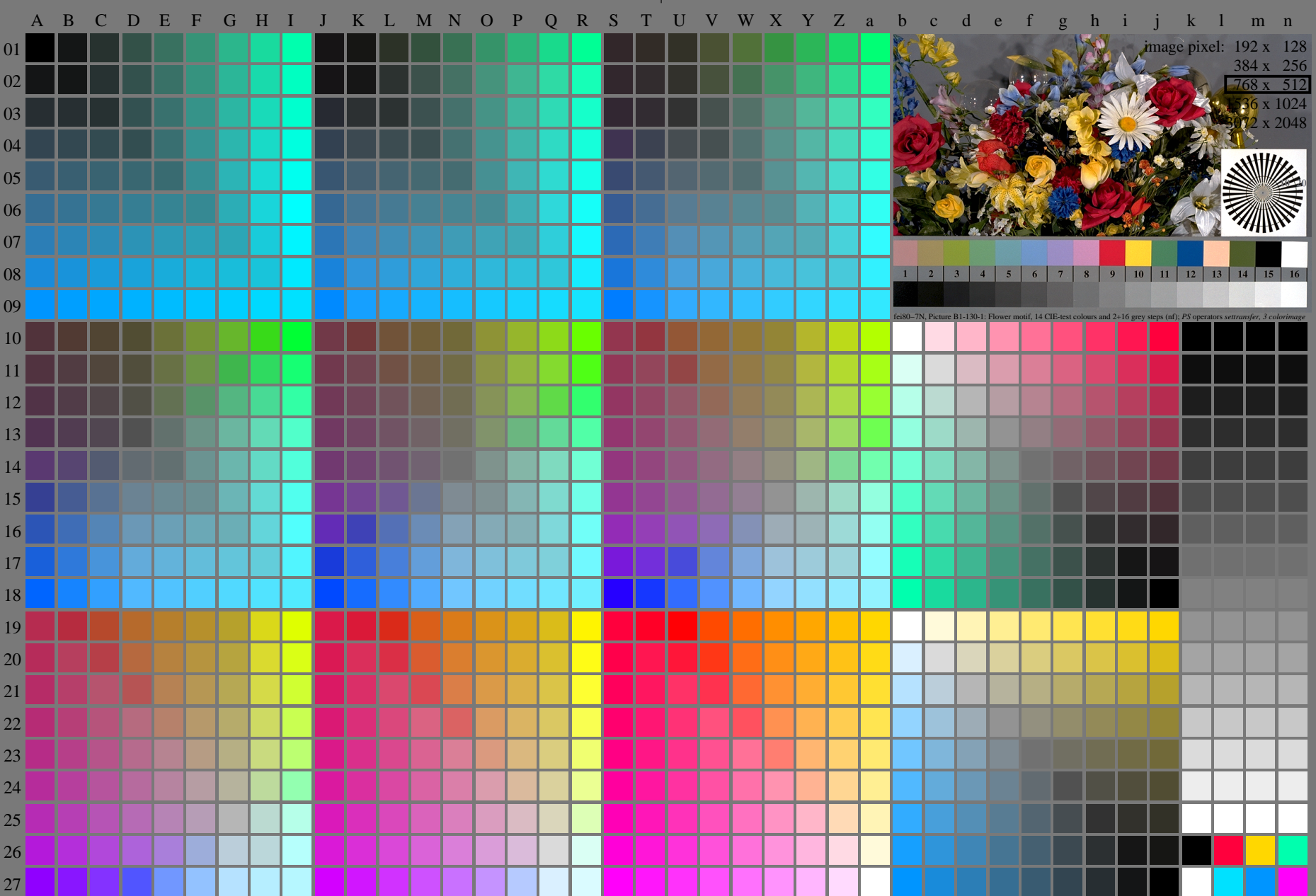


<http://farbe.li.tu-berlin.de/fei8/fei810fa.txt> /.ps; only vector graphic VG;  
see separate images of this page: <http://farbe.li.tu-berlin.de/fei8/fei8.htm>



see similar files of the whole series: <http://farbe.li.tu-berlin.de/feis.htm>  
technical information: <http://farbe.li.tu-berlin.de/A/33872E.html>  
or <http://standards.iso.org/iso/9241/306/ed-2/index.html>

TUB registration: 20240301-fei8/fei810fa.txt /.ps  
application for evaluation and measurement of display or print output  
TUB material: code=rh4ta

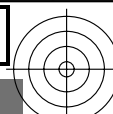
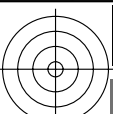


fei80-7N, Page 1/16, Test chart 2G with 40x27=1080 colours; digital equidistant 9 or 16 step colour scales; Colour data in column (A-n):  $rgb^* (A_n)$ , colorm = 1, xchart = 8, pchart = 0

TUB-test chart fei8; fei8: Test chart 2g\_ei with 40x27=1080 colours; 1MR, DEH 000n/w/cmy0/rgb  
Digital equidistant 9 or 16 step colour scales  $\rightarrow rgb^*_{de}, 130-0:$

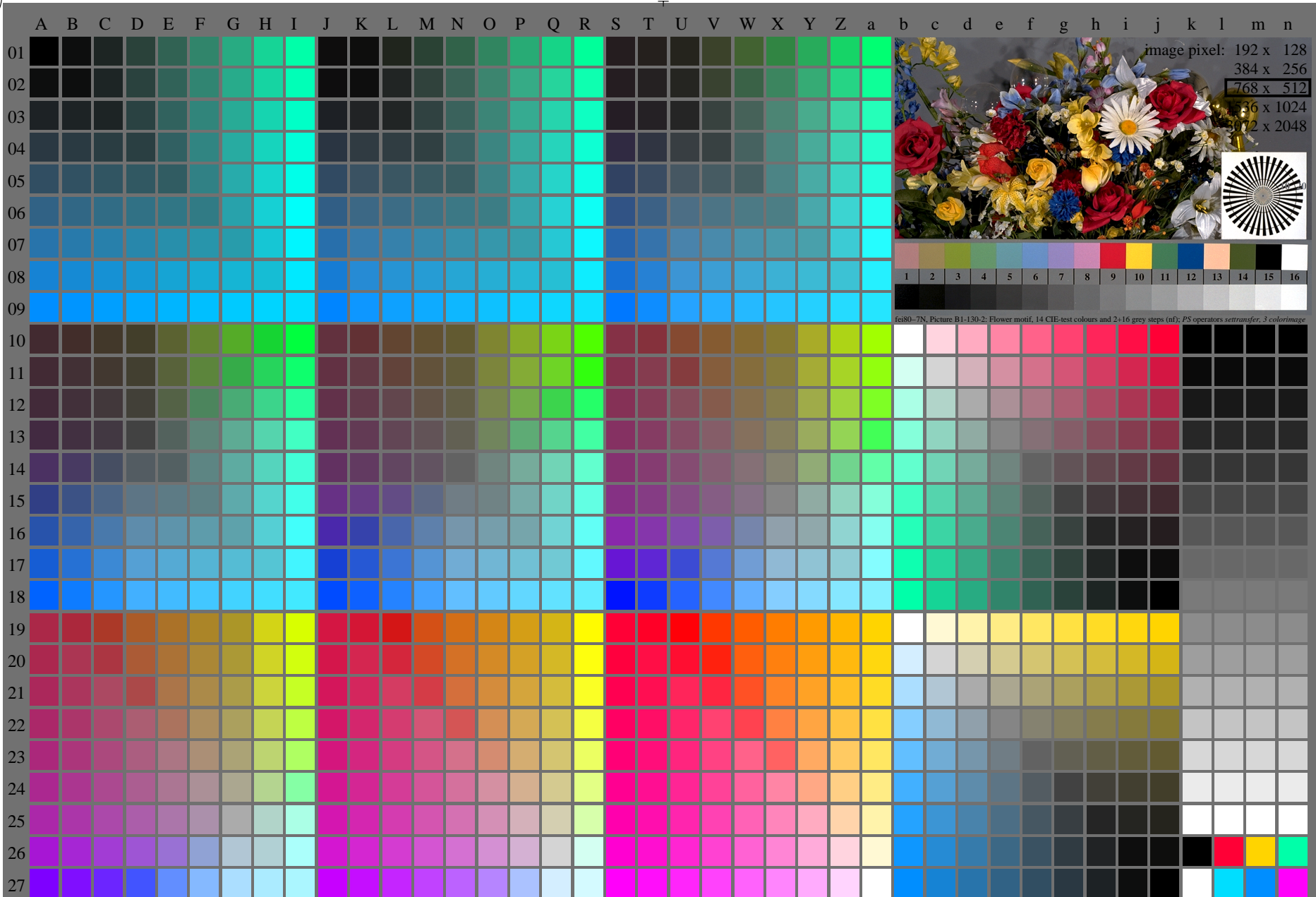


<http://farbe.li.tu-berlin.de/fei8/fei810fa.txt> /.ps; only vector graphic VG;  
see separate images of this page: <http://farbe.li.tu-berlin.de/fei8/fei8.htm>



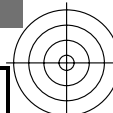
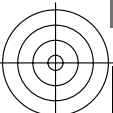
see similar files of the whole series: <http://farbe.li.tu-berlin.de/feis.htm>  
technical information: <http://farbe.li.tu-berlin.de/A/33872E.html>  
or <http://standards.iso.org/iso/9241/306/ed-2/index.html>

TUB registration: 20240301-fei8/fei810fa.txt /.ps  
application for evaluation and measurement of display or print output  
TUB material: code=rh4ta

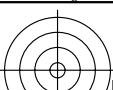


fei80-7N, Page 1/16, Test chart 2G with 40x27=1080 colours; digital equidistant 9 or 16 step colour scales; Colour data in column (A-n):  $rgb^* (A_n)$ ,  $colorm = 1$ ,  $xchart = 16$ ,  $pchart = 0$

TUB-test chart fei8; fei8: Test chart 2g\_ei with 40x27=1080 colours; 1MR, DEH 000n/w/cmy0/rgb  
Digital equidistant 9 or 16 step colour scales  $\rightarrow rgb^*_{de}, 130-0:$

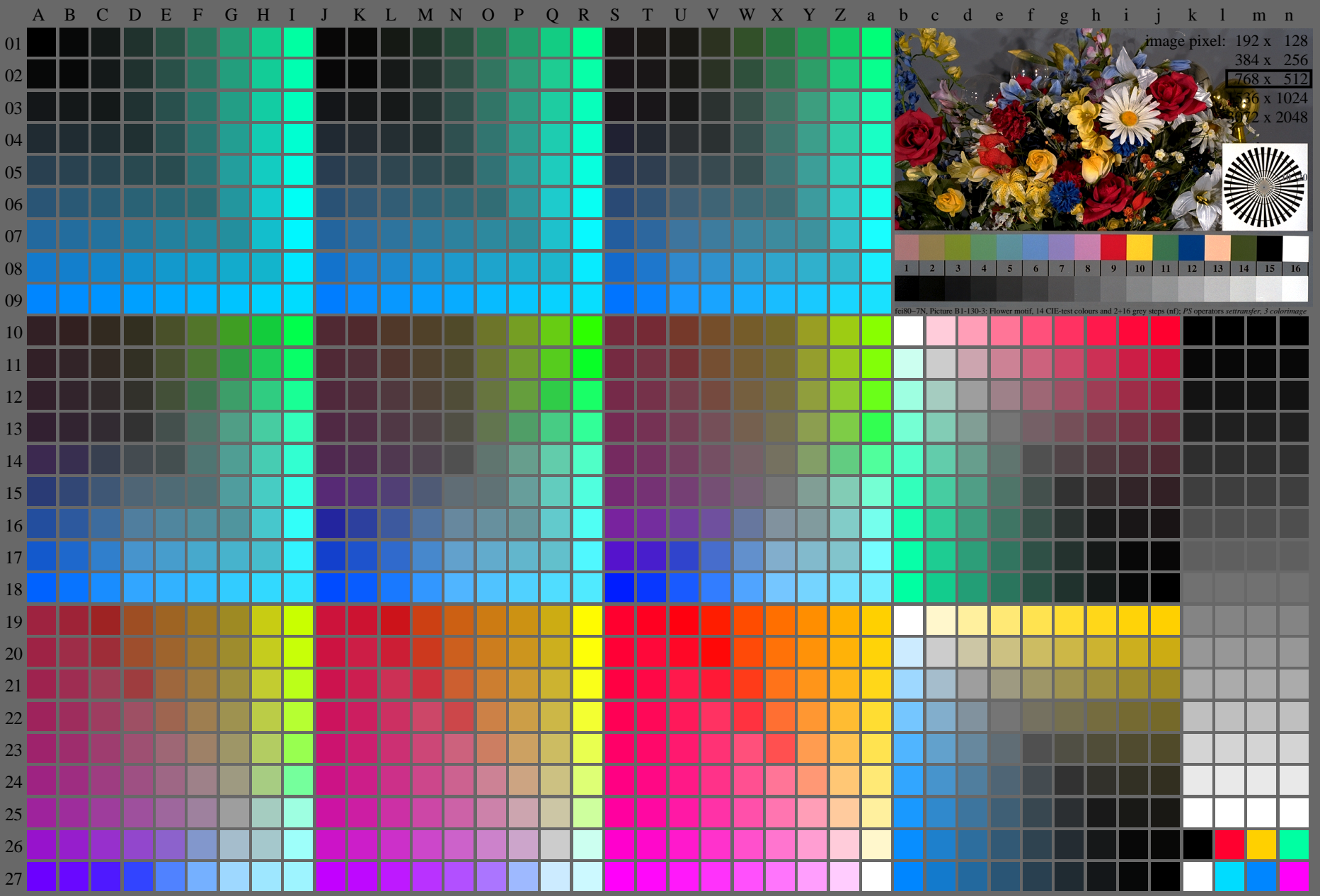


<http://farbe.li.tu-berlin.de/fei8/fei810fa.txt> /.ps; only vector graphic VG;  
see separate images of this page: <http://farbe.li.tu-berlin.de/fei8/fei8.htm>



see similar files of the whole series: <http://farbe.li.tu-berlin.de/feis.htm>  
technical information: <http://farbe.li.tu-berlin.de/A/33872E.html>  
or <http://standards.iso.org/iso/9241/306/ed-2/index.html>

TUB registration: 20240301-fei8/fei810fa.txt /.ps  
application for evaluation and measurement of display or print output  
TUB material: code=rh4ta

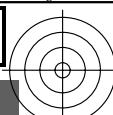
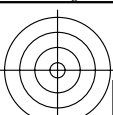


fei80-7N, Page 1/16, Test chart 2G with 40x27=1080 colours; digital equidistant 9 or 16 step colour scales; Colour data in column (A-n):  $rgb^* (A_n)$ , colorm = 1, xchart = 24, pchart = 0

TUB-test chart fei8; fei8: Test chart 2g\_ei with 40x27=1080 colours; 1MR, DEH 000n/w/cmy0/rgb  
Digital equidistant 9 or 16 step colour scales  $\rightarrow rgb^*_{de}, 130-0:$

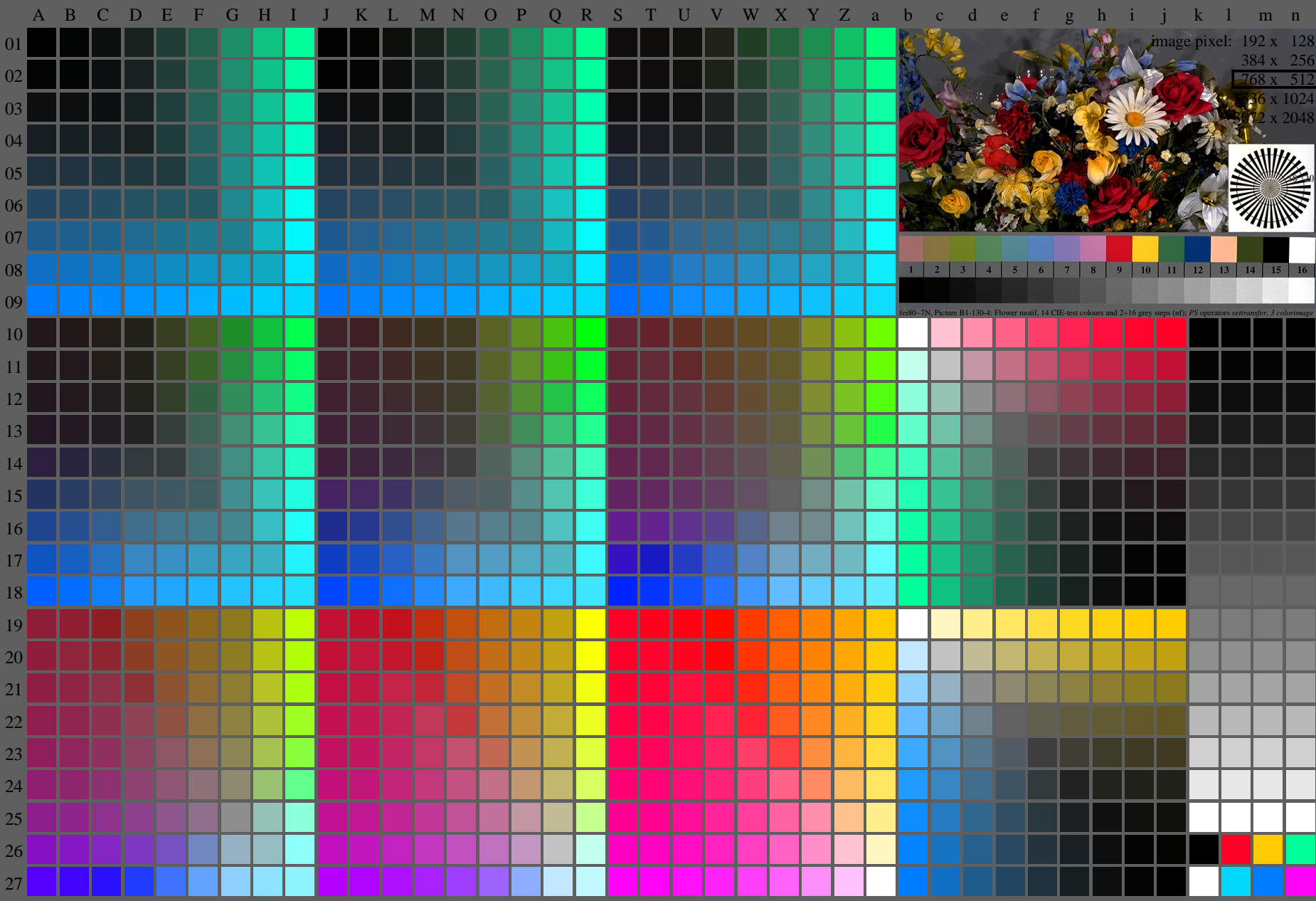


<http://farbe.li.tu-berlin.de/fei8/fei810fa.txt> /.ps; only vector graphic VG;  
see separate images of this page: <http://farbe.li.tu-berlin.de/fei8/fei8.htm>



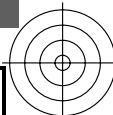
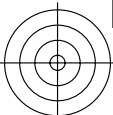
see similar files of the whole serie: <http://farbe.li.tu-berlin.de/feis.htm>  
technical information: <http://farbe.li.tu-berlin.de/A/33872E.html>  
or <http://standards.iso.org/iso/9241/306/ed-2/index.html>

TUB registration: 20240301-fei8/fei810fa.txt /.ps  
application for evaluation and measurement of display or print output  
TUB material: code=rh4ta

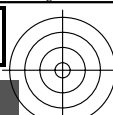
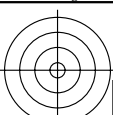


feis80-7N, Page 1/16, Test chart 2G with 40x27=1080 colours; digital equidistant 9 or 16 step colour scales; Colour data in column (A-n):  $rgb^* (A_n)$ , colorm = 1, xchart = 32, pchart = 0

TUB-test chart fei8; fei8: Test chart 2g\_ei with 40x27=1080 colours; 1MR, DEH 000n/w/cmy0/rgb  
Digital equidistant 9 or 16 step colour scales  $\rightarrow rgb^*_{de}, 130-0:$



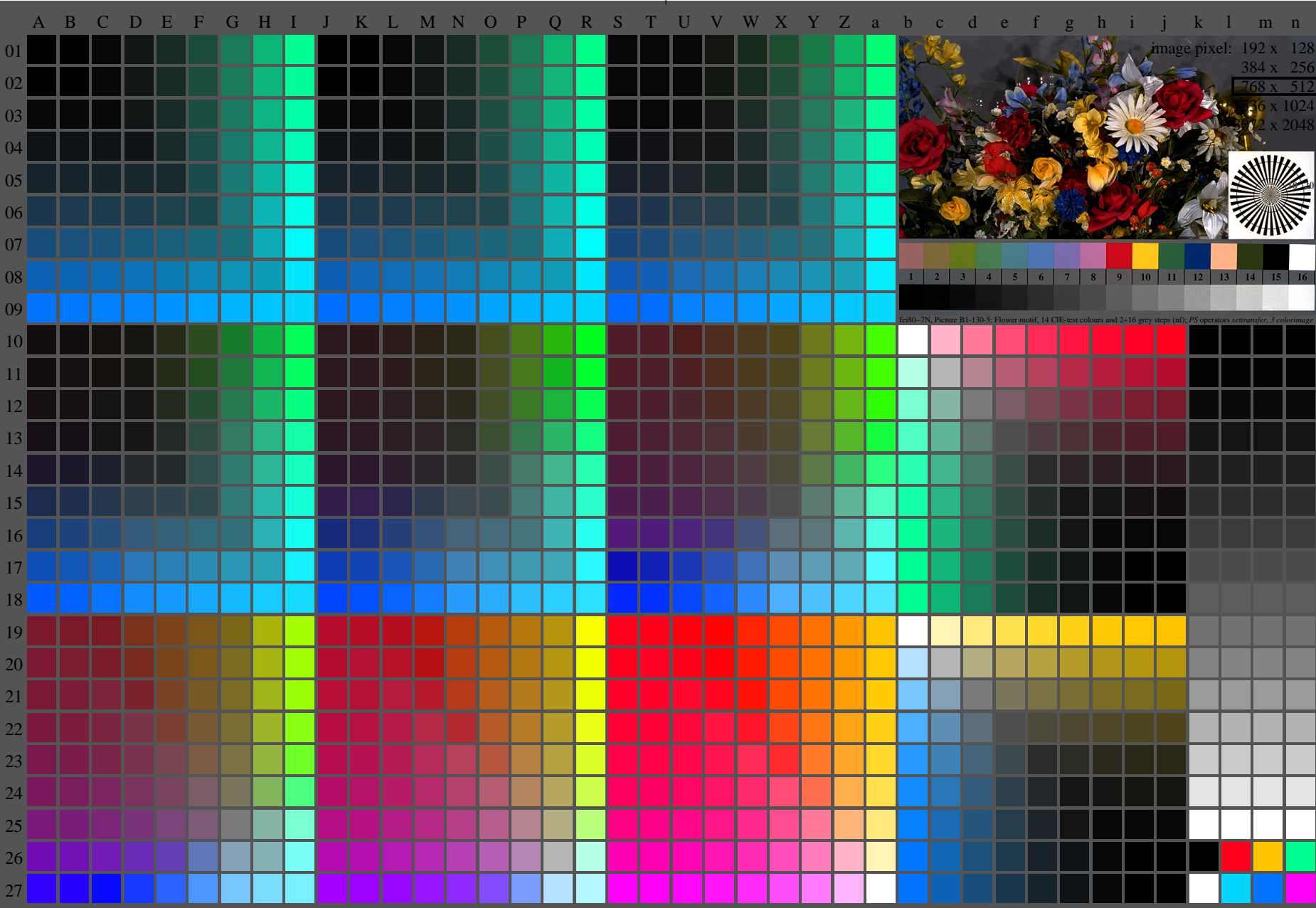
<http://farbe.li.tu-berlin.de/fei8/fei810fa.txt> /.ps; only vector graphic VG;  
see separate images of this page: <http://farbe.li.tu-berlin.de/fei8/fei8.htm>



see similar files of the whole serie: <http://farbe.li.tu-berlin.de/feis.htm>  
technical information: <http://farbe.li.tu-berlin.de/A/33872E.html>  
or <http://standards.iso.org/iso/9241/306/ed-2/index.html>

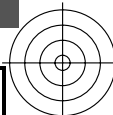
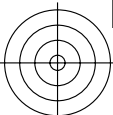
TUB registration: 20240301-fei8/fei810fa.txt /.ps  
application for evaluation and measurement of display or print output

TUB material: code=rh4ta

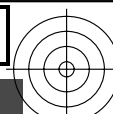
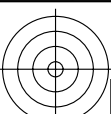


fei80-7N, Page 1/16, Test chart 2G with 40x27=1080 colours; digital equidistant 9 or 16 step colour scales; Colour data in column (A-n):  $rgb^* (A_n)$ , colorm = 1, xchart = 40, pchart = 0

TUB-test chart fei8; fei8: Test chart 2g\_ei with 40x27=1080 colours; 1MR, DEH 000n/w/cmy0/rgb  
Digital equidistant 9 or 16 step colour scales  $\rightarrow rgb^*_de, 130-0:$

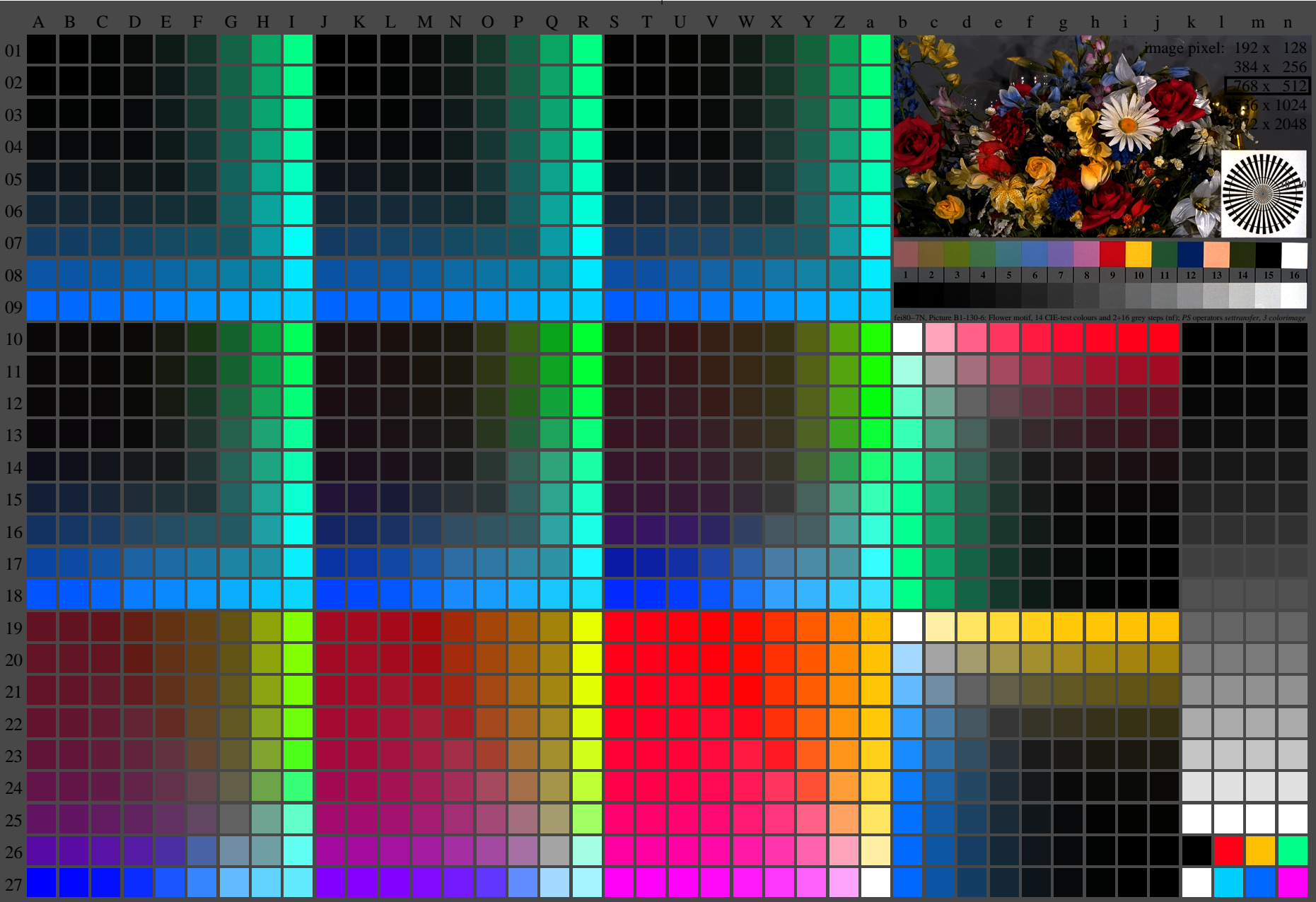


<http://farbe.li.tu-berlin.de/fei8/fei810fa.txt> /.ps; only vector graphic VG;  
see separate images of this page: <http://farbe.li.tu-berlin.de/fei8/fei8.htm>



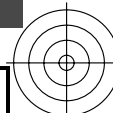
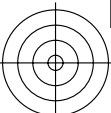
see similar files of the whole serie: <http://farbe.li.tu-berlin.de/feis.htm>  
technical information: <http://farbe.li.tu-berlin.de/A/33872E.html>  
or <http://standards.iso.org/iso/9241/306/ed-2/index.html>

TUB registration: 20240301-fei8/fei810fa.txt /.ps  
application for evaluation and measurement of display or print output  
TUB material: code=rh4ta

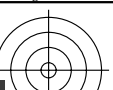
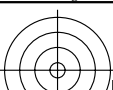


fei80-7N, Page 1/16, Test chart 2G with 40x27=1080 colours; digital equidistant 9 or 16 step colour scales; Colour data in column (A-n):  $rgb^*$  (A\_n), colorm = 1, xchart = 48, pchart = 0

TUB-test chart fei8; fei8: Test chart 2g\_ei with 40x27=1080 colours; 1MR, DEH 000n/w/cmy0/rgb  
Digital equidistant 9 or 16 step colour scales  $\rightarrow rgb^*_de, 130-0:$

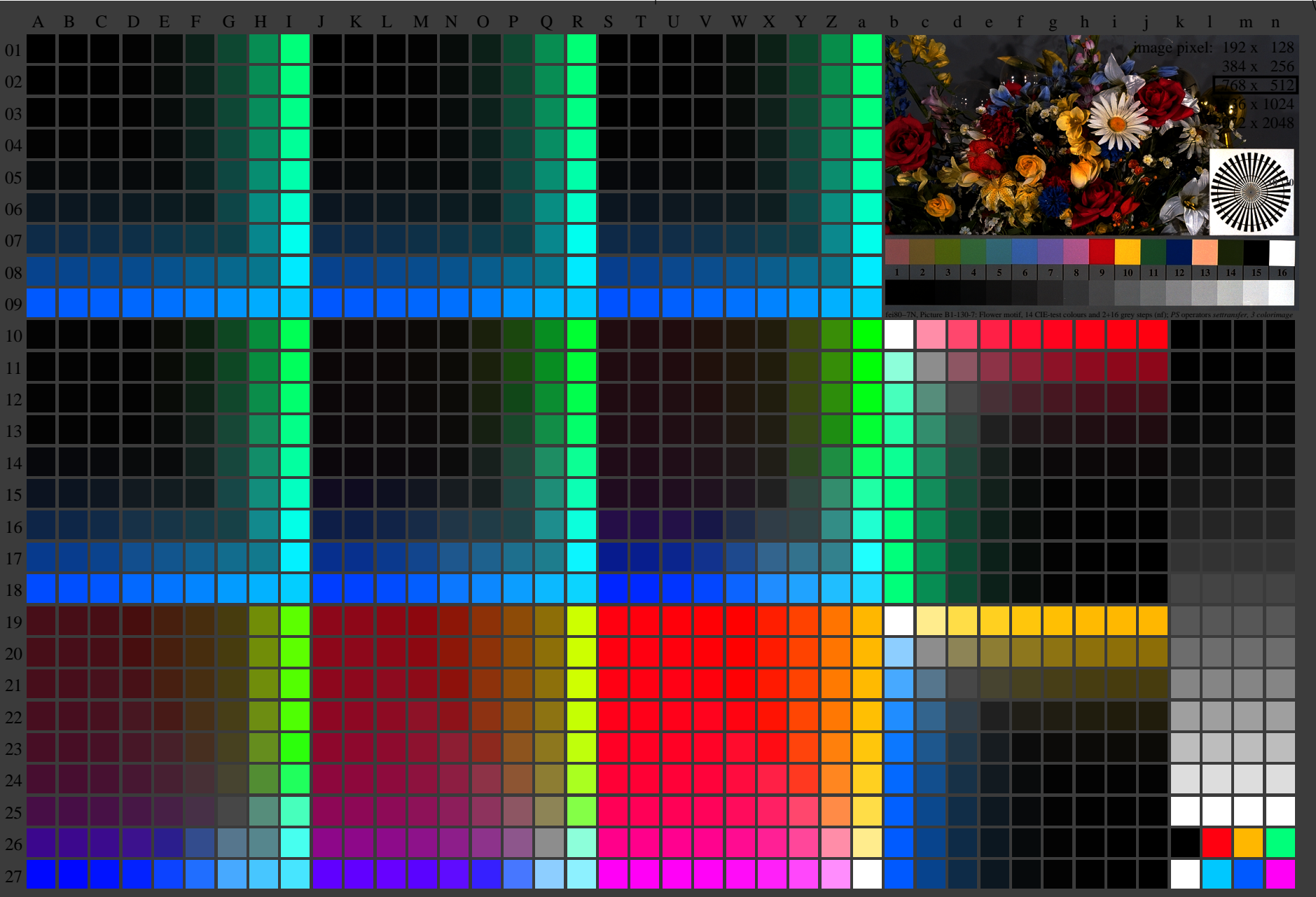


<http://farbe.li.tu-berlin.de/fei8/fei810fa.txt> /.ps; only vector graphic VG;  
see separate images of this page: <http://farbe.li.tu-berlin.de/fei8/fei8.htm>



see similar files of the whole serie: <http://farbe.li.tu-berlin.de/feis.htm>  
technical information: <http://farbe.li.tu-berlin.de/A/33872E.html>  
or <http://standards.iso.org/iso/9241/306/ed-2/index.html>

TUB registration: 20240301-fei8/fei810fa.txt /.ps  
application for evaluation and measurement of display or print output  
TUB material: code=rh4ta



fei80-7N, Page 1/16, Test chart 2G with 40x27=1080 colours; digital equidistant 9 or 16 step colour scales; Colour data in column (A-n):  $rgb^*_{de}$  (A\_n), colorm = 1, xchart = 56, pchart = 0

TUB-test chart fei8; fei8: Test chart 2g\_ei with 40x27=1080 colours; 1MR, DEH 000n/w/cmy0/rgb  
Digital equidistant 9 or 16 step colour scales  $\rightarrow rgb^*_{de}$ , 130-0:

