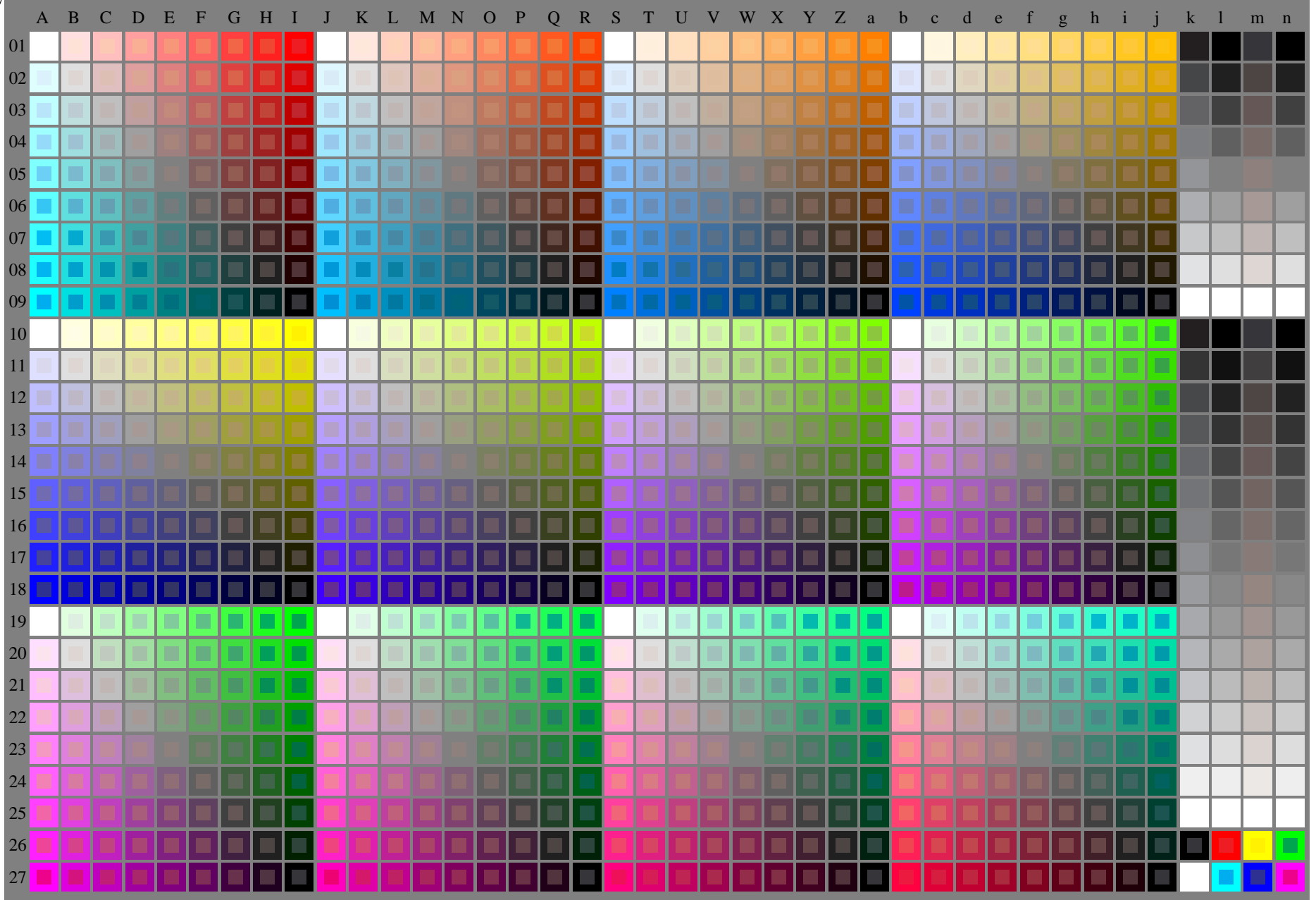


<http://farbe.li.tu-berlin.de/fei7/fei710np.pdf> /.ps; only vector graphic VG; start output  
see separate images of this page: <http://farbe.li.tu-berlin.de/fei7/fei7.htm>

see similar files of the whole series: <http://farbe.li.tu-berlin.de/feis.htm>  
technical information: <http://farbe.li.tu-berlin.de/A/33872E.html>  
or <http://standards.iso.org/iso/9241/306/ed-2/index.html>

TUB registration: 20240301-fei7/fei710np.pdf /.ps  
application for evaluation and measurement of display or print output  
TUB material: code=rh4ta



fei70-7n-030-0: Test chart 2o with 40x27=1080 colours; digital equidistant 9 or 16 step colour scales; Colour data in column (A-n): **rgb / cmy0 (A\_j + k26\_n27), 000n (k), w (l), nnn0 (m), www (n), colorml = 0**

TUB-test chart fei7; Test chart 2e\_e0 with 40x27=1080 colours; DH  
Digital equidistant 9 or 16 step colour scales

000n/w/cmy0/rgb  
->rgb\*\_d, 030-0:

