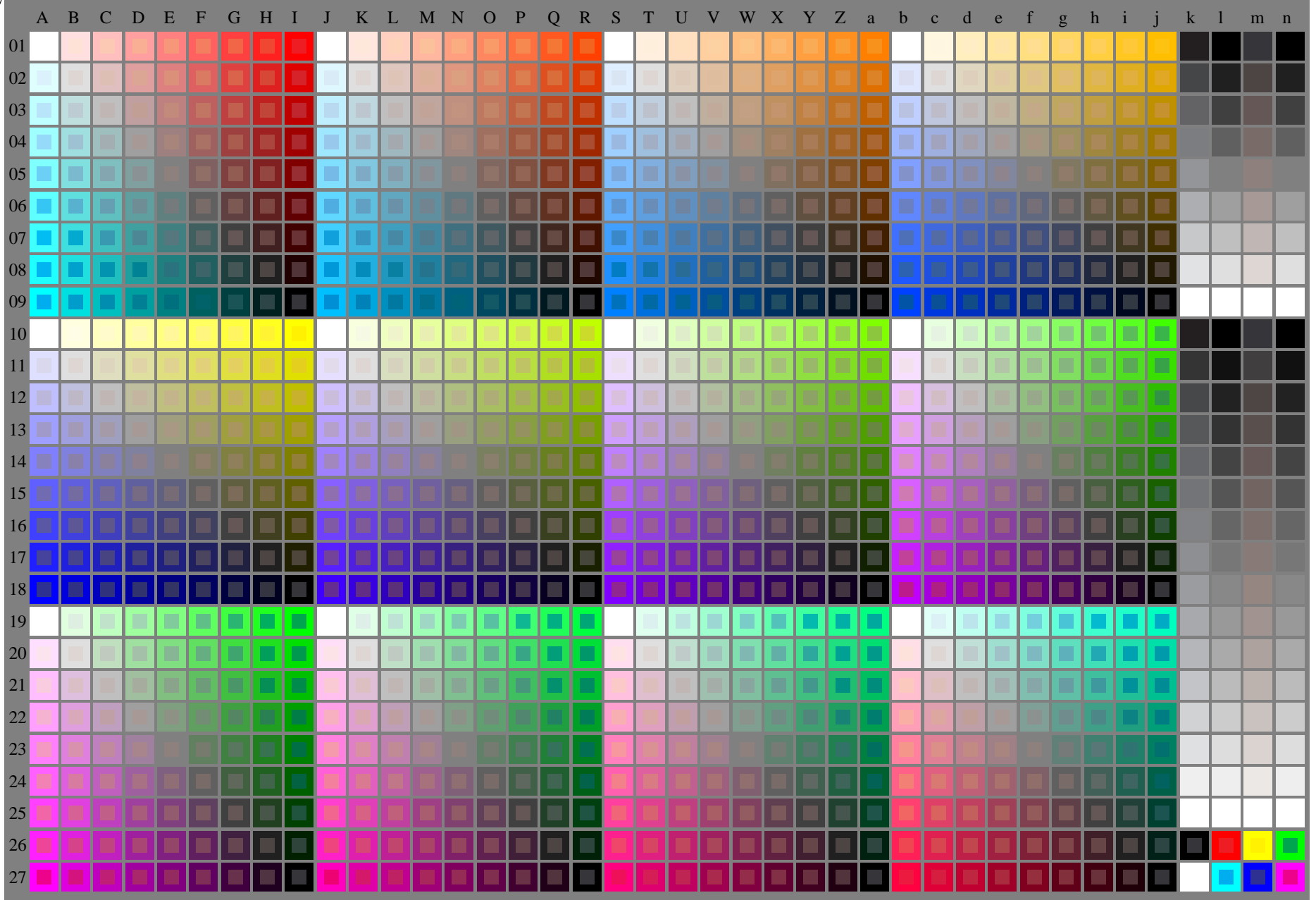


<http://farbe.li.tu-berlin.de/fei7/fei710na.txt> /ps; only vector graphic VG; start output see separate images of this page: <http://farbe.li.tu-berlin.de/fei7/fei7.htm>

see similar files of the whole series: <http://farbe.li.tu-berlin.de/feis.htm>
technical information: <http://farbe.li.tu-berlin.de/A/33872E.html>
or <http://standards.iso.org/iso/9241/306/ed-2/index.html>

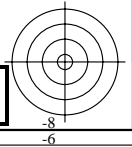
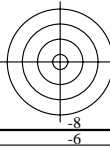
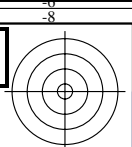
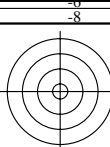
TUB registration: 20240301-fei7/fei710na.txt /ps
application for evaluation and measurement of display or print output
TUB material: code=rh4ta



fei70-7n-030-0: Test chart 2o with 40x27=1080 colours; digital equidistant 9 or 16 step colour scales; Colour data in column (A-n): **rgb / cmy0** (A_j + k26_n27), **000n** (k), **w** (l), **nnn0** (m), **www** (n), **colorml = 0**

TUB-test chart fei7; Test chart 2e_e0 with 40x27=1080 colours; DH
Digital equidistant 9 or 16 step colour scales

000n/w/cmy0/rgb
->rgb*_d, 030-0:



A B C D E F G H I J K L M N O P Q R S T U V W X Y Z a b c d e f g h i j k l m n

01 02 03 04 05 06 07 08 09 10 11 12 13 14 15 16 17 18 19 20 21 22 23 24 25 26 27

V L O Y M C

V L O Y M C

C M Y O L V

C M Y O L V