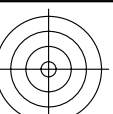
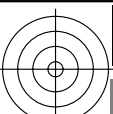


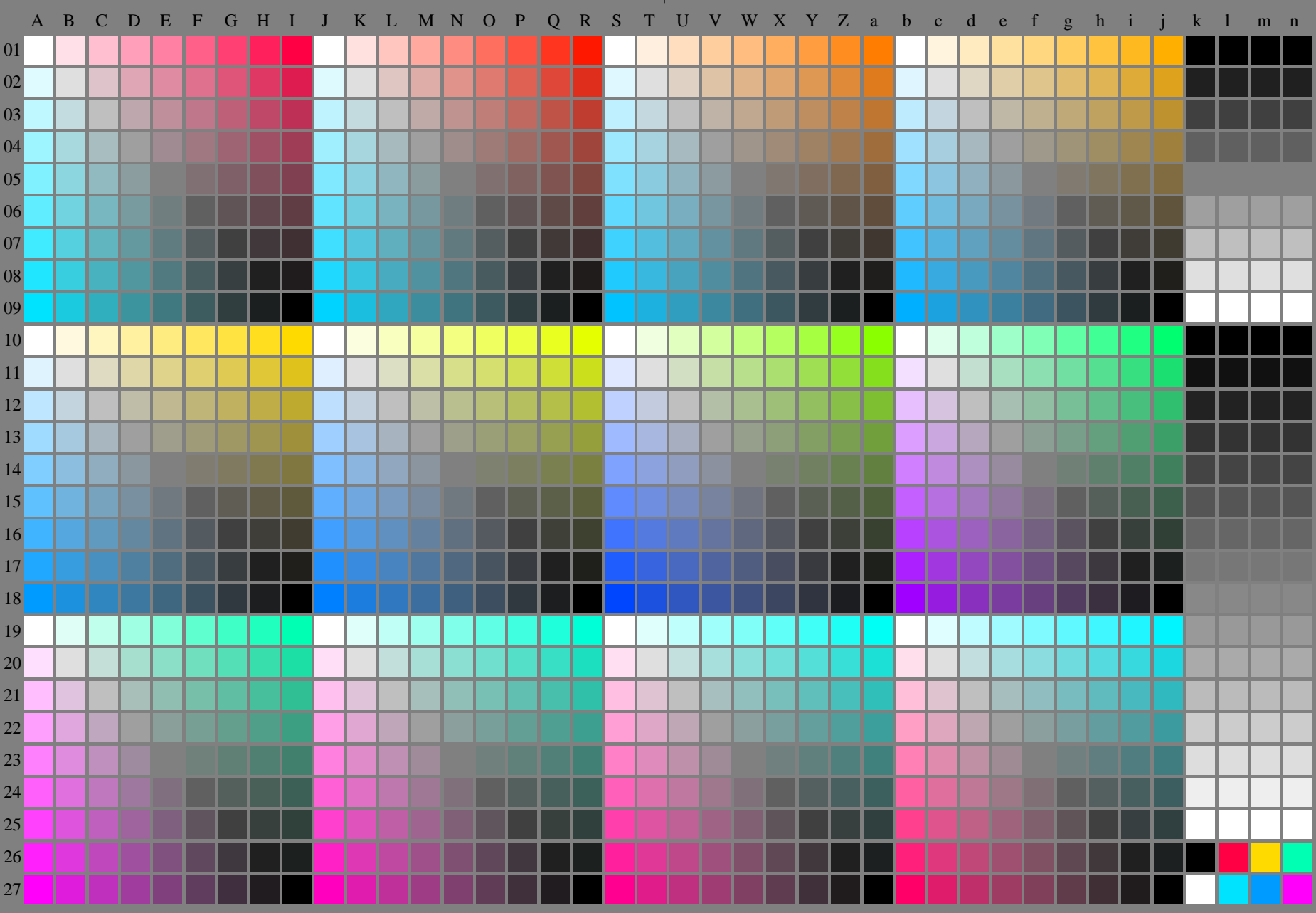
<http://farbe.li.tu-berlin.de/fei7/fei710fa.txt> /.ps; only vector graphic VG; start output  
see separate images of this page: <http://farbe.li.tu-berlin.de/fei7/fei7.htm>



see similar files of the whole series: <http://farbe.li.tu-berlin.de/feis.htm>  
technical information: <http://farbe.li.tu-berlin.de/A/33872E.html>  
or <http://standards.iso.org/iso/9241/306/ed-2/index.html>

TUB registration: 20240301-fei7/fei710fa.txt /.ps  
application for evaluation and measurement of display or print output

TUB material: code=rh4ta



fei70-7n-130-0: Test chart 2o with 40x27=1080 colours; digital equidistant 9 or 16 step colour scales; Colour data in column (A-n):  $rgb^* (A_n, colorml = 1)$

TUB-test chart fei7; Test chart 2e\_e0 with 40x27=1080 colours; 1MR, DEH  
Digital equidistant 9 or 16 step colour scales

000n/w/cmy0/rgb  
->rgb\*\_de, 130-0:



<http://farbe.li.tu-berlin.de/fei7/fei710fa.txt> /ps; only vector graphic VG; start output  
see separate images of this page: <http://farbe.li.tu-berlin.de/fei7/fei7.htm>

TUB registration: 20240301-fei7/fei710fa.txt /ps  
application for evaluation and measurement of display or print output  
TUB material: code=thata

|    | V       |         |         |         |         |         |         |         |         |         | L       |         |         |         |         |         |         |         |         |         | O       |         |         |         |         |         |         |         |         |         | M       |         |         |         |         |         |         |         |         |         | C |  |  |  |  |  |  |  |  |  |
|----|---------|---------|---------|---------|---------|---------|---------|---------|---------|---------|---------|---------|---------|---------|---------|---------|---------|---------|---------|---------|---------|---------|---------|---------|---------|---------|---------|---------|---------|---------|---------|---------|---------|---------|---------|---------|---------|---------|---------|---------|---|--|--|--|--|--|--|--|--|--|
|    | A       | B       | C       | D       | E       | F       | G       | H       | I       | J       | K       | L       | M       | N       | O       | P       | Q       | R       | S       | T       | U       | V       | W       | X       | Y       | Z       | a       | b       | c       | d       | e       | f       | g       | h       | i       | j       | k       | l       | m       | n       |   |  |  |  |  |  |  |  |  |  |
| 01 | 0001b01 | 0010c01 | 0019d01 | 0028e01 | 0037f01 | 0046g01 | 0055h01 | 0064i01 | 0073j01 | 0244b01 | 0253c01 | 0262d01 | 0271e01 | 0280f01 | 0289g01 | 0298h01 | 0307i01 | 0316j01 | 0487b01 | 0496c01 | 0505d01 | 0514e01 | 0523f01 | 0532g01 | 0541h01 | 0550i01 | 0559j01 | 0730b01 | 0739c01 | 0748d01 | 0757e01 | 0766f01 | 0775g01 | 0784h01 | 0793i01 | 0802j01 | 0972b01 | 0981c01 | 0990d01 | 0999e01 |   |  |  |  |  |  |  |  |  |  |
| 02 | 0002b02 | 0011c02 | 0020d02 | 0029e02 | 0038f02 | 0047g02 | 0056h02 | 0065i02 | 0074j02 | 0245b02 | 0254c02 | 0263d02 | 0272e02 | 0281f02 | 0290g02 | 0299h02 | 0308i02 | 0317j02 | 0488b02 | 0497c02 | 0506d02 | 0515e02 | 0524f02 | 0533g02 | 0542h02 | 0551i02 | 0560j02 | 0731b02 | 0740c02 | 0749d02 | 0758e02 | 0767f02 | 0776g02 | 0785h02 | 0794i02 | 0803j02 | 0973b02 | 0982c02 | 0991d02 | 0999e02 |   |  |  |  |  |  |  |  |  |  |
| 03 | 0003b03 | 0012c03 | 0021d03 | 0030e03 | 0039f03 | 0048g03 | 0057h03 | 0066i03 | 0075j03 | 0246b03 | 0255c03 | 0264d03 | 0273e03 | 0282f03 | 0291g03 | 0300h03 | 0309i03 | 0318j03 | 0489b03 | 0498c03 | 0507d03 | 0516e03 | 0525f03 | 0534g03 | 0543h03 | 0552i03 | 0561j03 | 0732b03 | 0741c03 | 0750d03 | 0759e03 | 0768f03 | 0777g03 | 0786h03 | 0795i03 | 0804j03 | 0974b03 | 0983c03 | 0992d03 | 1001e03 |   |  |  |  |  |  |  |  |  |  |
| 04 | 0004b04 | 0013c04 | 0022d04 | 0031e04 | 0040f04 | 0049g04 | 0058h04 | 0067i04 | 0076j04 | 0247b04 | 0256c04 | 0265d04 | 0274e04 | 0283f04 | 0292g04 | 0301h04 | 0310i04 | 0319j04 | 0490b04 | 0499c04 | 0508d04 | 0517e04 | 0526f04 | 0535g04 | 0544h04 | 0553i04 | 0562j04 | 0733b04 | 0742c04 | 0751d04 | 0760e04 | 0769f04 | 0778g04 | 0787h04 | 0796i04 | 0805j04 | 0975b04 | 0984c04 | 0993d04 | 1002e04 |   |  |  |  |  |  |  |  |  |  |
| 05 | 0005b05 | 0014c05 | 0023d05 | 0032e05 | 0041f05 | 0050g05 | 0059h05 | 0068i05 | 0077j05 | 0248b05 | 0257c05 | 0266d05 | 0275e05 | 0284f05 | 0293g05 | 0302h05 | 0311i05 | 0320j05 | 0491b05 | 0500c05 | 0509d05 | 0518e05 | 0527f05 | 0536g05 | 0545h05 | 0554i05 | 0563j05 | 0734b05 | 0743c05 | 0752d05 | 0761e05 | 0770f05 | 0779g05 | 0788h05 | 0797i05 | 0806j05 | 0976b05 | 0985c05 | 0994d05 | 1003e05 |   |  |  |  |  |  |  |  |  |  |
| 06 | 0006b06 | 0015c06 | 0024d06 | 0033e06 | 0042f06 | 0051g06 | 0060h06 | 0069i06 | 0078j06 | 0249b06 | 0258c06 | 0267d06 | 0276e06 | 0285f06 | 0294g06 | 0303h06 | 0312i06 | 0321j06 | 0492b06 | 0501c06 | 0510d06 | 0519e06 | 0528f06 | 0537g06 | 0546h06 | 0555i06 | 0564j06 | 0735b06 | 0744c06 | 0753d06 | 0762e06 | 0771f06 | 0780g06 | 0789h06 | 0798i06 | 0807j06 | 0977b06 | 0986c06 | 0995d06 | 1004e06 |   |  |  |  |  |  |  |  |  |  |
| 07 | 0007b07 | 0016c07 | 0025d07 | 0034e07 | 0043f07 | 0052g07 | 0061h07 | 0070i07 | 0079j07 | 0250b07 | 0259c07 | 0268d07 | 0277e07 | 0286f07 | 0295g07 | 0304h07 | 0313i07 | 0322j07 | 0493b07 | 0502c07 | 0511d07 | 0520e07 | 0529f07 | 0538g07 | 0547h07 | 0556i07 | 0565j07 | 0736b07 | 0745c07 | 0754d07 | 0763e07 | 0772f07 | 0781g07 | 0790h07 | 0799i07 | 0808j07 | 0978b07 | 0987c07 | 0996d07 | 1005e07 |   |  |  |  |  |  |  |  |  |  |
| 08 | 0008b08 | 0017c08 | 0026d08 | 0035e08 | 0044f08 | 0053g08 | 0062h08 | 0071i08 | 0080j08 | 0251b08 | 0260c08 | 0269d08 | 0278e08 | 0287f08 | 0296g08 | 0305h08 | 0314i08 | 0323j08 | 0494b08 | 0503c08 | 0512d08 | 0521e08 | 0530f08 | 0539g08 | 0548h08 | 0557i08 | 0566j08 | 0737b08 | 0746c08 | 0755d08 | 0764e08 | 0773f08 | 0782g08 | 0791h08 | 0800i08 | 0809j08 | 0979b08 | 0988c08 | 0997d08 | 1006e08 |   |  |  |  |  |  |  |  |  |  |
| 09 | 0009b09 | 0018c09 | 0027d09 | 0036e09 | 0045f09 | 0054g09 | 0063h09 | 0072i09 | 0081j09 | 0252b09 | 0261c09 | 0270d09 | 0279e09 | 0288f09 | 0297g09 | 0306h09 | 0315i09 | 0324j09 | 0495b09 | 0504c09 | 0513d09 | 0522e09 | 0531f09 | 0540g09 | 0549h09 | 0558i09 | 0567j09 | 0738b09 | 0747c09 | 0756d09 | 0765e09 | 0774f09 | 0783g09 | 0792h09 | 0801i09 | 0810j09 | 0980b09 | 0989c09 | 0998d09 | 1007e09 |   |  |  |  |  |  |  |  |  |  |
| 10 | 0010b10 | 0019c10 | 0028d10 | 0037e10 | 0046f10 | 0055g10 | 0064h10 | 0073i10 | 0082j10 | 0325b10 | 0334c10 | 0343d10 | 0352e10 | 0361f10 | 0370g10 | 0379h10 | 0388i10 | 0397j10 | 0568b10 | 0577c10 | 0586d10 | 0595e10 | 0604f10 | 0613g10 | 0622h10 | 0631i10 | 0640j10 | 0811b10 | 0820c10 | 0829d10 | 0838e10 | 0847f10 | 0856g10 | 0865h10 | 0874i10 | 0883j10 | 1008b10 | 1017c10 | 1026d10 | 1035e10 |   |  |  |  |  |  |  |  |  |  |
| 11 | 0011b11 | 0020c11 | 0029d11 | 0038e11 | 0047f11 | 0056g11 | 0065h11 | 0074i11 | 0083j11 | 0326b11 | 0335c11 | 0344d11 | 0353e11 | 0362f11 | 0371g11 | 0380h11 | 0389i11 | 0398j11 | 0569b11 | 0578c11 | 0587d11 | 0596e11 | 0605f11 | 0614g11 | 0623h11 | 0632i11 | 0641j11 | 0812b11 | 0821c11 | 0830d11 | 0839e11 | 0848f11 | 0857g11 | 0866h11 | 0875i11 | 0884j11 | 1009b11 | 1018c11 | 1027d11 | 1036e11 |   |  |  |  |  |  |  |  |  |  |
| 12 | 0012b12 | 0021c12 | 0030d12 | 0039e12 | 0048f12 | 0057g12 | 0066h12 | 0075i12 | 0084j12 | 0327b12 | 0336c12 | 0345d12 | 0354e12 | 0363f12 | 0372g12 | 0381h12 | 0390i12 | 0399j12 | 0570b12 | 0579c12 | 0588d12 | 0597e12 | 0606f12 | 0615g12 | 0624h12 | 0633i12 | 0642j12 | 0813b12 | 0822c12 | 0831d12 | 0840e12 | 0849f12 | 0858g12 | 0867h12 | 0876i12 | 0885j12 | 1010b12 | 1019c12 | 1028d12 | 1037e12 |   |  |  |  |  |  |  |  |  |  |
| 13 | 0013b13 | 0022c13 | 0031d13 | 0040e13 | 0049f13 | 0058g13 | 0067h13 | 0076i13 | 0085j13 | 0328b13 | 0337c13 | 0346d13 | 0355e13 | 0364f13 | 0373g13 | 0382h13 | 0391i13 | 0400j13 | 0571b13 | 0580c13 | 0589d13 | 0598e13 | 0607f13 | 0616g13 | 0625h13 | 0634i13 | 0643j13 | 0814b13 | 0823c13 | 0832d13 | 0841e13 | 0850f13 | 0859g13 | 0868h13 | 0877i13 | 0886j13 | 1011b13 | 1020c13 | 1029d13 | 1038e13 |   |  |  |  |  |  |  |  |  |  |
| 14 | 0014b14 | 0023c14 | 0032d14 | 0041e14 | 0050f14 | 0059g14 | 0068h14 | 0077i14 | 0086j14 | 0329b14 | 0338c14 | 0347d14 | 0356e14 | 0365f14 | 0374g14 | 0383h14 | 0392i14 | 0401j14 | 0572b14 | 0581c14 | 0590d14 | 0599e14 | 0608f14 | 0617g14 | 0626h14 | 0635i14 | 0644j14 | 0815b14 | 0824c14 | 0833d14 | 0842e14 | 0851f14 | 0860g14 | 0869h14 | 0878i14 | 0887j14 | 1012b14 | 1021c14 | 1030d14 | 1039e14 |   |  |  |  |  |  |  |  |  |  |
| 15 | 0015b15 | 0024c15 | 0033d15 | 0042e15 | 0051f15 | 0060g15 | 0069h15 | 0078i15 | 0087j15 | 0330b15 | 0339c15 | 0348d15 | 0357e15 | 0366f15 | 0375g15 | 0384h15 | 0393i15 | 0402j15 | 0573b15 | 0582c15 | 0591d15 | 0600e15 | 0609f15 | 0618g15 | 0627h15 | 0636i15 | 0645j15 | 0816b15 | 0825c15 | 0834d15 | 0843e15 | 0852f15 | 0861g15 | 0870h15 | 0879i15 | 0888j15 | 1013b15 | 1022c15 | 1031d15 | 1040e15 |   |  |  |  |  |  |  |  |  |  |
| 16 | 0016b16 | 0025c16 | 0034d16 | 0043e16 | 0052f16 | 0061g16 | 0070h16 | 0079i16 | 0088j16 | 0331b16 | 0340c16 | 0349d16 | 0358e16 | 0367f16 | 0376g16 | 0385h16 | 0394i16 | 0403j16 | 0574b16 | 0583c16 | 0592d16 | 0601e16 | 0610f16 | 0619g16 | 0628h16 | 0637i16 | 0646j16 | 0817b16 | 0826c16 | 0835d16 | 0844e16 | 0853f16 | 0862g16 | 0871h16 | 0880i16 | 0889j16 | 1014b16 | 1023c16 | 1032d16 | 1041e16 |   |  |  |  |  |  |  |  |  |  |
| 17 | 0017b17 | 0026c17 | 0035d17 | 0044e17 | 0053f17 | 0062g17 | 0071h17 | 0080i17 | 0089j17 | 0332b17 | 0341c17 | 0350d17 | 0359e17 | 0368f17 | 0377g17 | 0386h17 | 0395i17 | 0404j17 | 0575b17 | 0584c17 | 0593d17 | 0602e17 | 0611f17 | 0620g17 | 0629h17 | 0638i17 | 0647j17 | 0818b17 | 0827c17 | 0836d17 | 0845e17 | 0854f17 | 0863g17 | 0872h17 | 0881i17 | 0890j17 | 1015b17 | 1024c17 | 1033d17 | 1042e17 |   |  |  |  |  |  |  |  |  |  |
| 18 | 0018b18 | 0027c18 | 0036d18 | 0045e18 | 0054f18 | 0063g18 | 0072h18 | 0081i18 | 0090j18 | 0333b18 | 0342c18 | 0351d18 | 0360e18 | 0369f18 | 0378g18 | 0387h18 | 0396i18 | 0405j18 | 0576b18 | 0585c18 | 0594d18 | 0603e18 | 0612f18 | 0621g18 | 0630h18 | 0639i18 | 0648j18 | 0819b18 | 0828c18 | 0837d18 | 0846e18 | 0855f18 | 0864g18 | 0873h18 | 0882i18 | 0891j18 | 1016b18 | 1025c18 | 1034d18 | 1043e18 |   |  |  |  |  |  |  |  |  |  |
| 19 | 0019b19 | 0028c19 | 0037d19 | 0046e19 | 0055f19 | 0064g19 | 0073h19 | 0082i19 | 0091j19 | 0334b19 | 0343c19 | 0352d19 | 0361e19 | 0370f19 | 0379g19 | 0388h19 | 0397i19 | 0406j19 | 0577b19 | 0586c19 | 0595d19 | 0604e19 | 0613f19 | 0622g19 | 0631h19 | 0640i19 | 0649j19 | 0820b19 | 0829c19 | 0838d19 | 0847e19 | 0856f19 | 0865g19 | 0874h19 | 0883i19 | 0892j19 | 1017b19 | 1026c19 | 1035d19 | 1044e19 |   |  |  |  |  |  |  |  |  |  |
| 20 | 0020b20 | 0029c20 | 0038d20 | 0047e20 | 0056f20 | 0065g20 | 0074h20 | 0083i20 | 0092j20 | 0335b20 | 0344c20 | 0353d20 | 0362e20 | 0371f20 | 0380g20 | 0389h20 | 0398i20 | 0407j20 | 0578b20 | 0587c20 | 0596d20 | 0605e20 | 0614f20 | 0623g20 | 0632h20 | 0641i20 | 0650j20 | 0821b20 | 0830c20 | 0839d20 | 0848e20 | 0857f20 | 0866g20 | 0875h20 | 0884i20 | 0893j20 | 1018b20 | 1027c20 | 1036d20 | 1045e20 |   |  |  |  |  |  |  |  |  |  |
| 21 | 0021b21 | 0030c21 | 0039d21 | 0048e21 | 0057f21 | 0066g21 | 0075h21 | 0084i21 | 0093j21 | 0336b21 | 0345c21 | 0354d21 | 0363e21 | 0372f21 | 0381g21 | 0390h21 | 0399i21 | 0408j21 | 0579b21 | 0588c21 | 0597d21 | 0606e21 | 0615f21 | 0624g21 | 0633h21 | 0642i21 | 0651j21 | 0822b21 | 0831c21 | 0840d21 | 0849e21 | 0858f21 | 0867g21 | 0876h21 | 0885i21 | 0894j21 | 1019b21 | 1028c21 | 1037d21 | 1046e21 |   |  |  |  |  |  |  |  |  |  |
| 22 | 0022b22 | 0031c22 | 0040d22 | 0049e22 | 0058f22 | 0067g22 | 0076h22 | 0085i22 | 0094j22 | 0337b22 | 0346c22 | 0355d22 | 0364e22 | 0373f22 | 0382g22 | 0391h22 | 0400i22 | 0409j22 | 0580b22 | 0589c22 | 0598d22 | 0607e22 | 0616f22 | 0625g22 | 0634h22 | 0643i22 | 0652j22 | 0823b22 | 0832c22 | 0841d22 | 0850e22 | 0859f22 | 0868g22 | 0877h22 | 0886i22 | 0895j22 | 1020b22 | 1029c22 | 1038d22 | 1047e22 |   |  |  |  |  |  |  |  |  |  |
| 23 | 0023b23 | 0032c23 | 0041d23 | 0050e23 | 0059f23 | 0068g23 | 0077h23 | 0086i23 | 0095j23 | 0338b23 | 0347c23 | 0356d23 | 0365e23 | 0374f23 | 0383g23 | 0392h23 | 0401i23 | 0410j23 | 0581b23 | 0590c23 | 0599d23 | 0608e23 | 0617f23 | 0626g23 | 0635h23 | 0644i23 | 0653j23 | 0824b23 | 0833c23 | 0842d23 | 0851e23 | 0860f23 | 0869g23 | 0878h23 | 0887i23 | 0896j23 | 1021b23 | 1030c23 | 1039d23 | 1048e23 |   |  |  |  |  |  |  |  |  |  |
| 24 | 0024b24 | 0033c24 | 0042d24 | 0051e24 | 0060f24 | 0069g24 | 0078h24 | 0087i24 | 0096j24 | 0339b24 | 0348c24 | 0357d24 | 0366e24 | 0375f24 | 0384g24 | 0393h24 | 0402i24 | 0411j24 | 0582b24 | 0591c24 | 0600d24 | 0609e24 | 0618f24 | 0627g24 | 0636h24 | 0645    |         |         |         |         |         |         |         |         |         |         |         |         |         |         |   |  |  |  |  |  |  |  |  |  |

see similar files of the whole serie: <http://farbe.li.tu-berlin.de/feis.htm>  
 technical information: <http://farbe.li.tu-berlin.de/A/33872E.html>  
 or <http://standards.iso.org/iso/9241/306/ed-2/index.html>

TUB registration: 20240301-fei7/fei710fa.txt /.ps  
 application for evaluation and measurement of display or print output  
 TUB material: code=rh4ta

| i  | LAB*ref | l*out | LAB*out | LAB*out/c-ref | ΔE*  |
|----|---------|-------|---------|---------------|------|
| 1  | 0.0     | 0.0   | 0.0     | 0.0           | 0.01 |
| 2  | 6.36    | 0.0   | 0.07    | 6.36          | 0.01 |
| 3  | 12.72   | 0.0   | 0.13    | 12.72         | 0.01 |
| 4  | 19.08   | 0.0   | 0.2     | 19.08         | 0.01 |
| 5  | 25.44   | 0.0   | 0.27    | 25.44         | 0.01 |
| 6  | 31.8    | 0.0   | 0.33    | 31.8          | 0.01 |
| 7  | 38.16   | 0.0   | 0.4     | 38.16         | 0.01 |
| 8  | 44.52   | 0.0   | 0.47    | 44.52         | 0.01 |
| 9  | 50.89   | 0.0   | 0.53    | 50.89         | 0.01 |
| 10 | 57.25   | 0.0   | 0.6     | 57.25         | 0.01 |
| 11 | 63.61   | 0.0   | 0.67    | 63.61         | 0.01 |
| 12 | 69.97   | 0.0   | 0.73    | 69.97         | 0.01 |
| 13 | 76.33   | 0.0   | 0.8     | 76.33         | 0.01 |
| 14 | 82.69   | 0.0   | 0.87    | 82.69         | 0.01 |
| 15 | 89.05   | 0.0   | 0.93    | 89.05         | 0.01 |
| 16 | 95.41   | 0.0   | 1.0     | 95.41         | 0.01 |
| 17 | 0.0     | 0.0   | 0.0     | 0.0           | 0.01 |
| 18 | 23.85   | 0.0   | 0.25    | 23.85         | 0.01 |
| 19 | 47.71   | 0.0   | 0.5     | 47.71         | 0.01 |
| 20 | 71.56   | 0.0   | 0.75    | 71.56         | 0.01 |
| 21 | 95.41   | 0.0   | 1.0     | 95.41         | 0.01 |

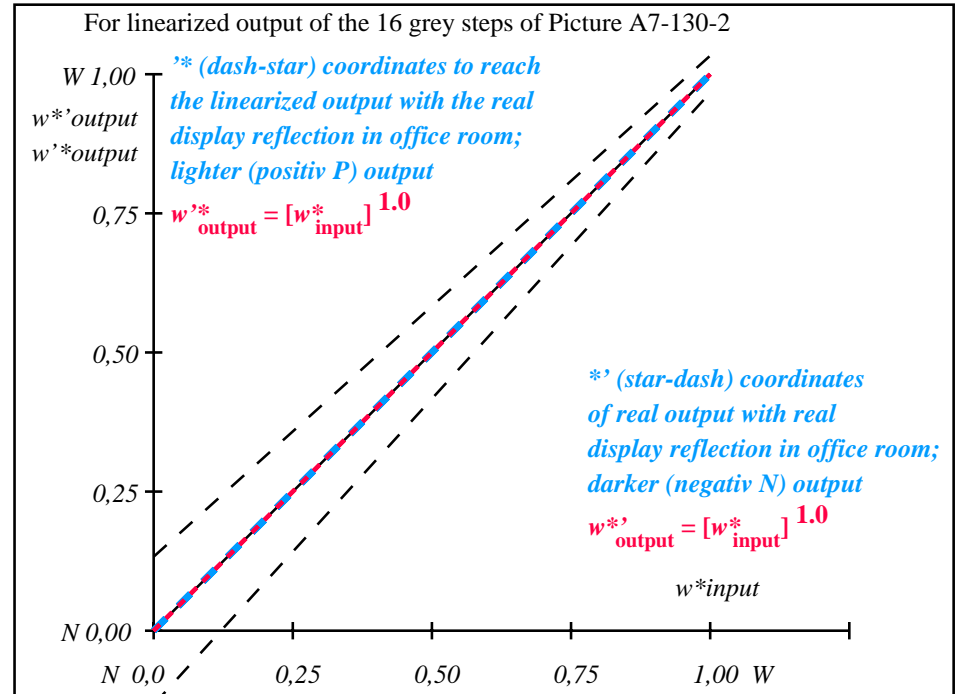
**Start output S1**  
**Specification according to ISO/IEC 15775 Annex G and DIN 33866-1 Annex G**

Mean lightness difference (16 steps)  
 $\Delta E^*_{CIELAB} = 0.0$

Mean lightness difference (5 steps)  
 $\Delta L^*_{CIELAB} = 0.0$

Mean colour reproduction index:  $R^*_{ab,m} = 100$

fei70-3n-130-2: File: Measure unknown; Device: Device unknown; Date: Date unknown



fei71-3n-130-2: File: Measure unknown; Device: Device unknown; Date: Date unknown

| $L^*/Y^*$ <sub>intended</sub><br>(absolute) | 0.0/0.0 | 6.3/0.7 | 12.7/1.5 | 19.0/2.7 | 25.4/4.5 | 31.8/6.9 | 38.1/10.1 | 44.5/14.2 | 50.8/19.1 | 57.2/25.1 | 63.6/32.3 | 69.9/40.7 | 76.3/50.4 | 82.6/61.5 | 89.0/74.2 | 95.4/88.5 |
|---|---------|---------|----------|----------|----------|----------|-----------|-----------|-----------|-----------|-----------|-----------|-----------|-----------|-----------|-----------|
| $w^* w^* w^*$<br>setrgb<br>gp=1.0           |         |         |          |          |          |          |           |           |           |           |           |           |           |           |           |           |
| No. and Hex code                            | 00;F    | 01;E    | 02;D     | 03;C     | 04;B     | 05;A     | 06;9      | 07;8      | 08;7      | 09;6      | 10;5      | 11;4      | 12;3      | 13;2      | 14;1      | 15;0      |
| $w^* = l^*$<br>(relative)                   |         |         |          |          |          |          |           |           |           |           |           |           |           |           |           |           |
| $w^*_{intended}$                            | 0,000   | 0,067   | 0,133    | 0,200    | 0,267    | 0,333    | 0,400     | 0,467     | 0,533     | 0,600     | 0,667     | 0,733     | 0,800     | 0,867     | 0,933     | 1,000     |
| $w^*_{out}$                                 | 0.0     | 0.067   | 0.133    | 0.2      | 0.267    | 0.333    | 0.4       | 0.467     | 0.533     | 0.6       | 0.667     | 0.733     | 0.8       | 0.867     | 0.933     | 1.0       |

OE740-7n, Picture A7-130-2: 16 visual equidistant  $L^*$ -grey steps; PS operator:  $w^* w^* w^*$  setrgbcolor

TUB-test chart fei7; In-output relation according to ISO 9241-306; 1MR, DEH  
 Viewing Y contrast  $Y_W:Y_N=88,9:0,31$ ;  $Y_N$  range 0,0 to <0,46

000n/w/cmy0/rgb  
 ->rgb\*\_de, 130-2: