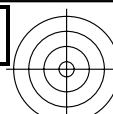
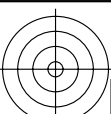


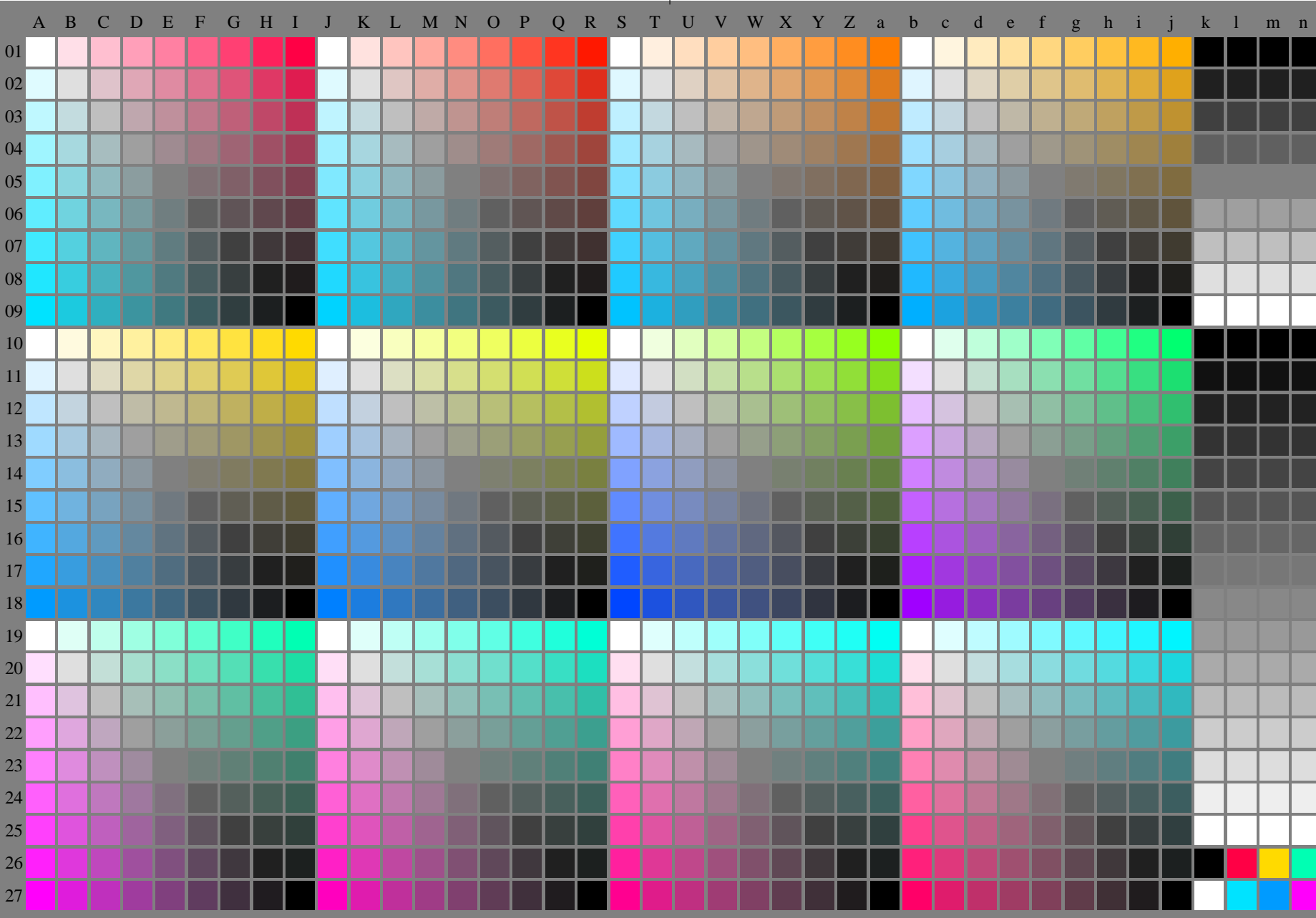
<http://farbe.li.tu-berlin.de/fei6/fei610fa.txt> /.ps; only vector graphic VG; start output  
see separate images of this page: <http://farbe.li.tu-berlin.de/fei6/fei6.htm>



see similar files of the whole serie: <http://farbe.li.tu-berlin.de/feis.htm>  
technical information: <http://farbe.li.tu-berlin.de/A/33872E.html>  
or <http://standards.iso.org/iso/9241/306/ed-2/index.html>

TUB registration: 20240301-fei6/fei610fa.txt /.ps  
application for evaluation and measurement of display or print output

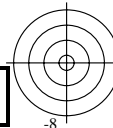
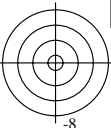
TUB material: code=rh4ta



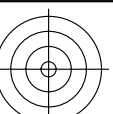
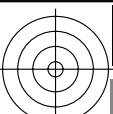
fei6-7n-130-0: Test chart 2o with 40x27=1080 colours; digital equidistant 9 or 16 step colour scales; Colour data in column (A-n):  $rgb^*(A_n, colorml = 1)$

TUB-test chart fei6; Test chart 2o\_e0 with 40x27=1080 colours; 1MR, DEH  
Digital equidistant 9 or 16 step colour scales

000n/w/cmy0/rgb  
->rgb\*\_de, 130-0:



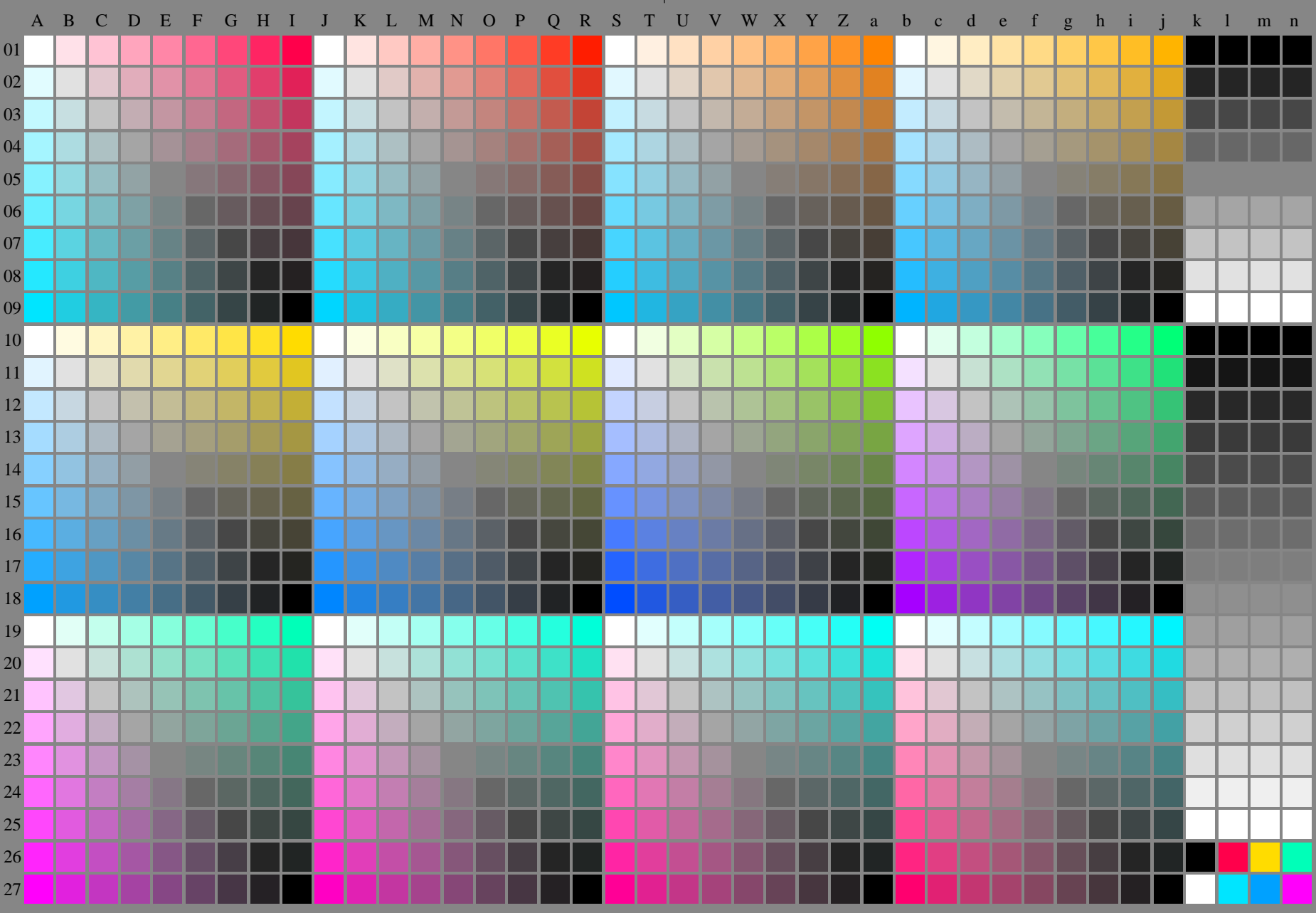
<http://farbe.li.tu-berlin.de/fei6/fei610fa.txt> /.ps; only vector graphic VG;  
see separate images of this page: <http://farbe.li.tu-berlin.de/fei6/fei6.htm>



see similar files of the whole serie: <http://farbe.li.tu-berlin.de/feis.htm>  
technical information: <http://farbe.li.tu-berlin.de/A/33872E.html>  
or <http://standards.iso.org/iso/9241/306/ed-2/index.html>

TUB registration: 20240301-fei6/fei610fa.txt /.ps  
application for evaluation and measurement of display or print output

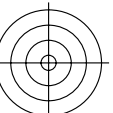
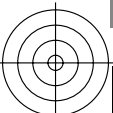
TUB material: code=rh4ta



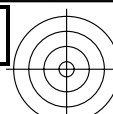
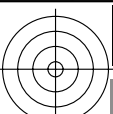
fei6-7n-131-0: Test chart 2o with 40x27=1080 colours; digital equidistant 9 or 16 step colour scales; Colour data in column (A-n):  $rgb^*(A_n, colorml = 1)$

TUB-test chart fei6; Test chart 2o\_e0 with 40x27=1080 colours; 1MR, DEH  
Digital equidistant 9 or 16 step colour scales

000n/w/cmy0/rgb  
->rgb\*\_de, 131-0:



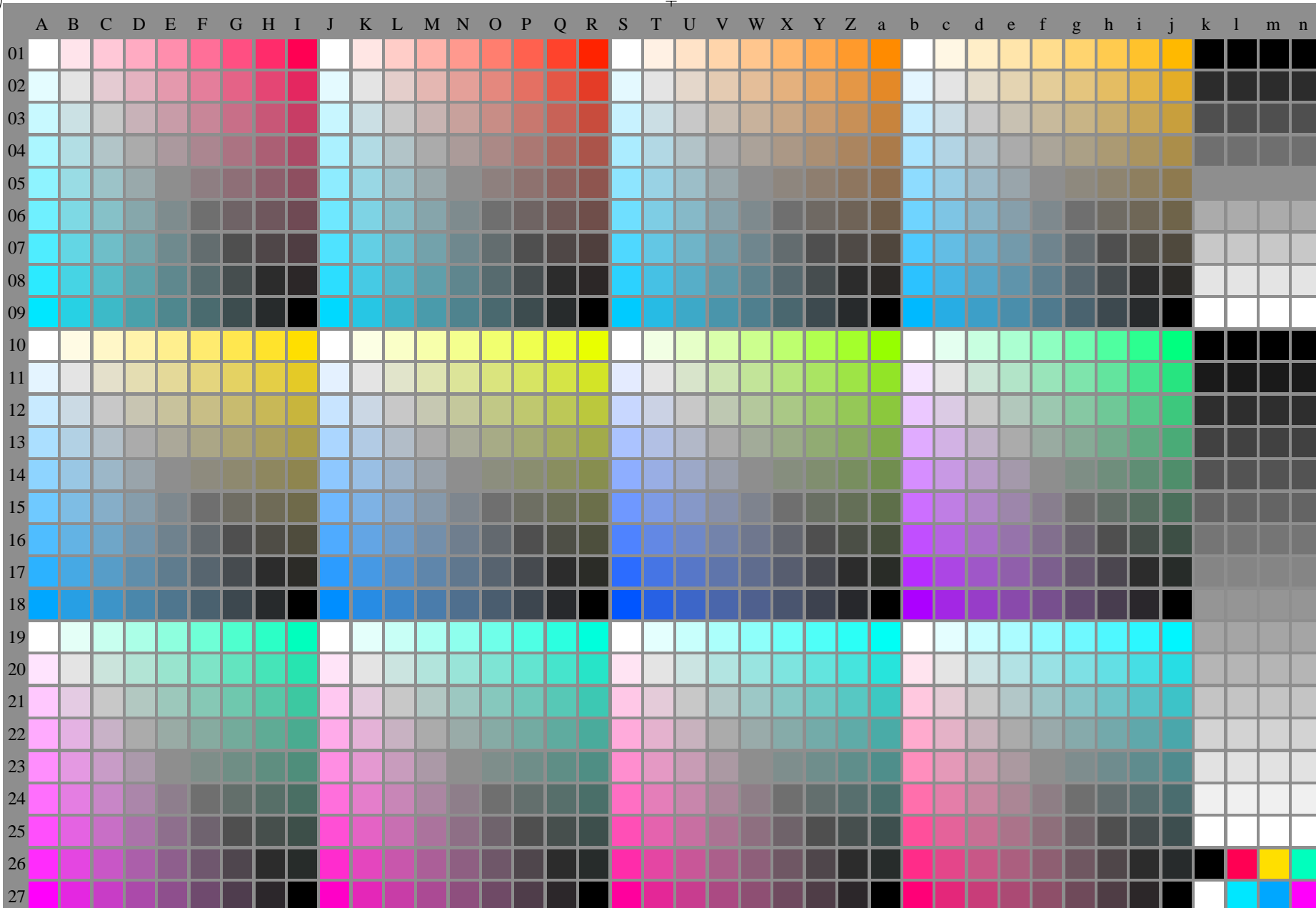
<http://farbe.li.tu-berlin.de/fei6/fei610fa.txt> /.ps; only vector graphic VG;  
see separate images of this page: <http://farbe.li.tu-berlin.de/fei6/fei6.htm>



see similar files of the whole series: <http://farbe.li.tu-berlin.de/feis.htm>  
technical information: <http://farbe.li.tu-berlin.de/A/33872E.html>  
or <http://standards.iso.org/iso/9241/306/ed-2/index.html>

TUB registration: 20240301-fei6/fei610fa.txt /.ps  
application for evaluation and measurement of display or print output

TUB material: code=rh4ta



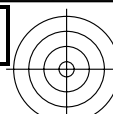
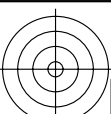
fei6-7n-132-0: Test chart 2o with 40x27=1080 colours; digital equidistant 9 or 16 step colour scales; Colour data in column (A-n):  $rgb^*(A_n, colorml = 1)$

TUB-test chart fei6; Test chart 2o\_e0 with 40x27=1080 colours; 1MR, DEH  
Digital equidistant 9 or 16 step colour scales

000n/w/cmy0/rgb  
->rgb\*\_de, 132-0:



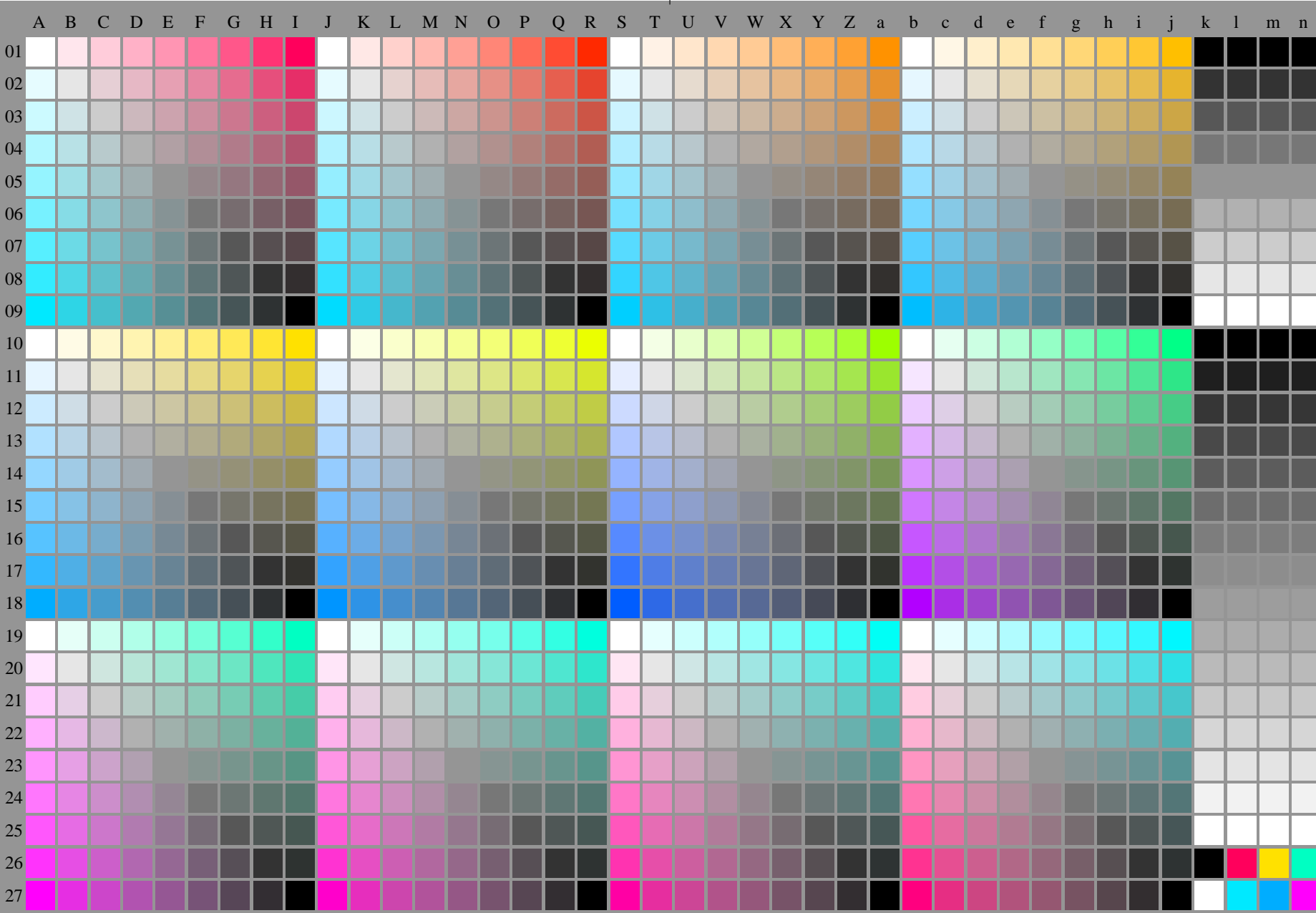
<http://farbe.li.tu-berlin.de/fei6/fei610fa.txt> /.ps; only vector graphic VG;  
see separate images of this page: <http://farbe.li.tu-berlin.de/fei6/fei6.htm>



see similar files of the whole series: <http://farbe.li.tu-berlin.de/feis.htm>  
technical information: <http://farbe.li.tu-berlin.de/A/33872E.html>  
or <http://standards.iso.org/iso/9241/306/ed-2/index.html>

TUB registration: 20240301-fei6/fei610fa.txt /.ps  
application for evaluation and measurement of display or print output

TUB material: code=rh4ta



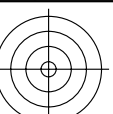
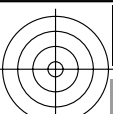
fei6-7n-133-0: Test chart 2o with 40x27=1080 colours; digital equidistant 9 or 16 step colour scales; Colour data in column (A-n):  $rgb^*(A_n, colorml = 1)$

TUB-test chart fei6; Test chart 2o\_e0 with 40x27=1080 colours; 1MR, DEH  
Digital equidistant 9 or 16 step colour scales

000n/w/cmy0/rgb  
->rgb\*\_de, 133-0:



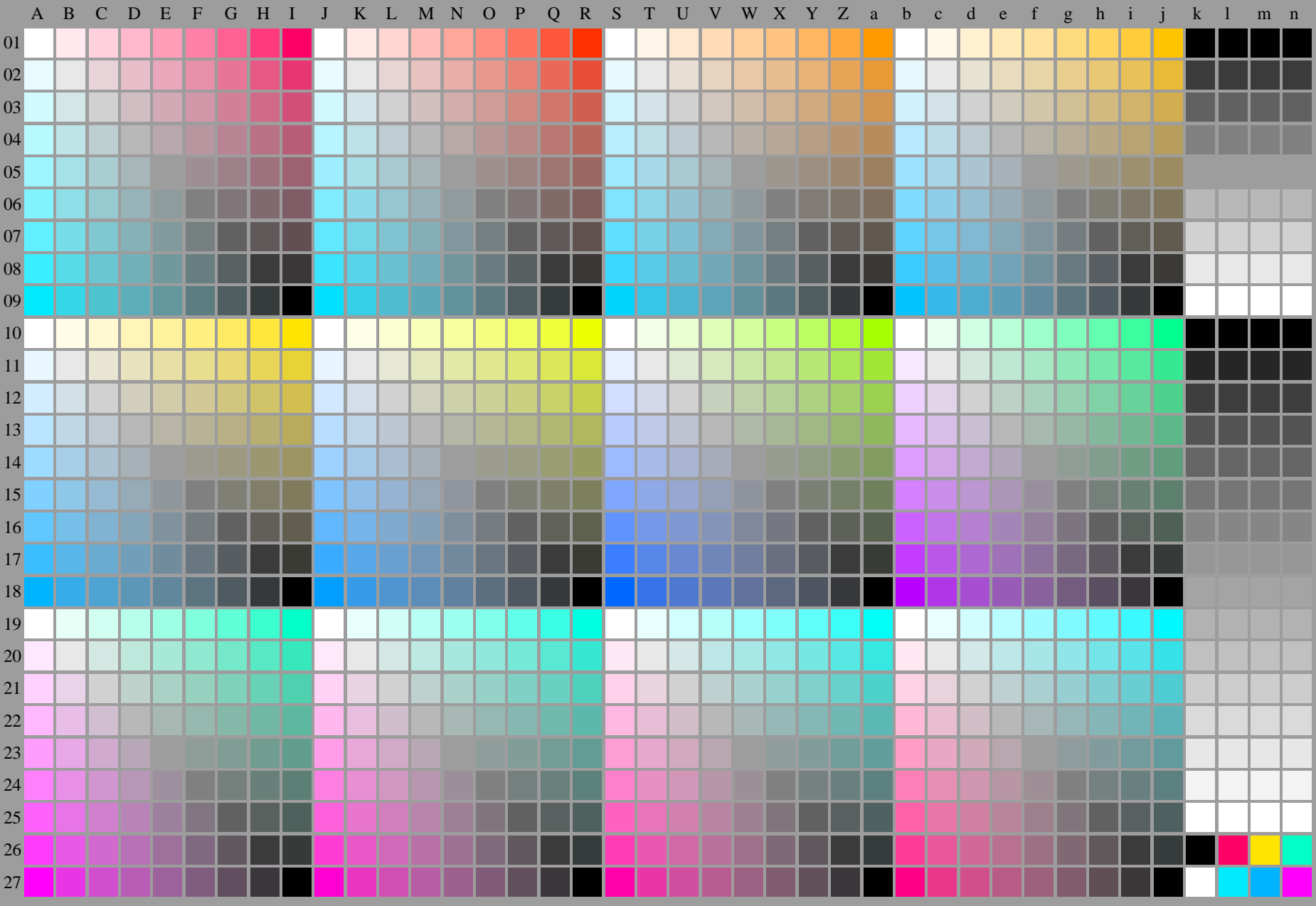
<http://farbe.li.tu-berlin.de/fei6/fei610fa.txt> /.ps; only vector graphic VG;  
see separate images of this page: <http://farbe.li.tu-berlin.de/fei6/fei6.htm>



see similar files of the whole series: <http://farbe.li.tu-berlin.de/feis.htm>  
technical information: <http://farbe.li.tu-berlin.de/A/33872E.html>  
or <http://standards.iso.org/iso/9241/306/ed-2/index.html>

TUB registration: 20240301-fei6/fei610fa.txt /.ps  
application for evaluation and measurement of display or print output

TUB material: code=rh4ta

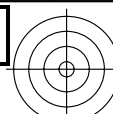
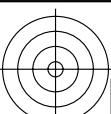


fei60-7n-134-0: Test chart 2o with 40x27=1080 colours; digital equidistant 9 or 16 step colour scales; Colour data in column (A-n):  $rgb^*(A_n, colorml = 1)$

TUB-test chart fei6; Test chart 2o\_e0 with 40x27=1080 colours; 1MR, DEH  
Digital equidistant 9 or 16 step colour scales

000n/w/cmy0/rgb  
->rgb\*\_de, 134-0:

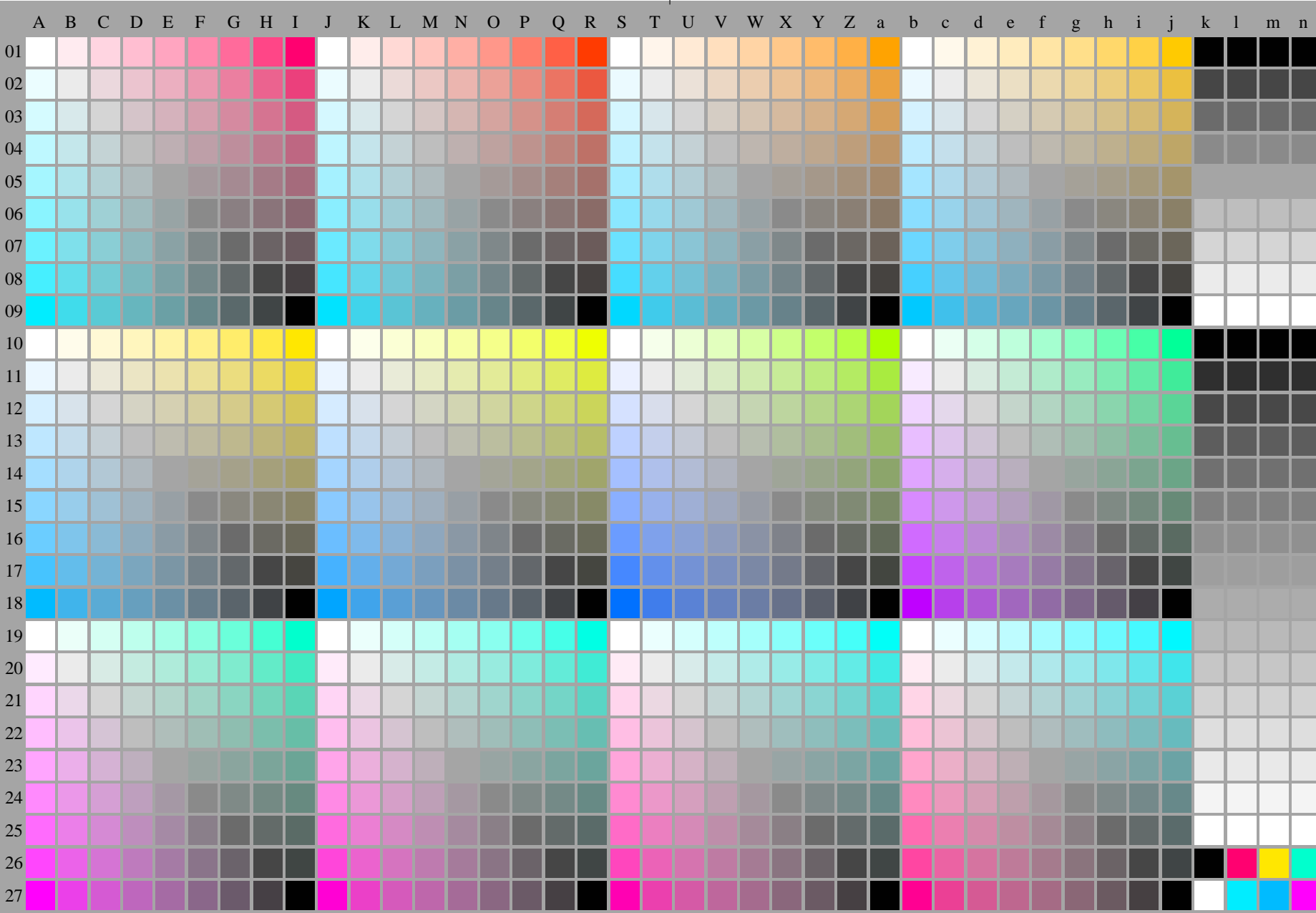
<http://farbe.li.tu-berlin.de/fei6/fei610fa.txt> /.ps; only vector graphic VG;  
see separate images of this page: <http://farbe.li.tu-berlin.de/fei6/fei6.htm>



see similar files of the whole series: <http://farbe.li.tu-berlin.de/feis.htm>  
technical information: <http://farbe.li.tu-berlin.de/A/33872E.html>  
or <http://standards.iso.org/iso/9241/306/ed-2/index.html>

TUB registration: 20240301-fei6/fei610fa.txt /.ps  
application for evaluation and measurement of display or print output

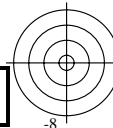
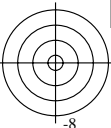
TUB material: code=rh4ta



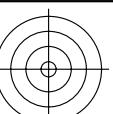
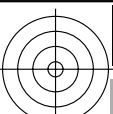
fei60-7n-135-0: Test chart 2o with 40x27=1080 colours; digital equidistant 9 or 16 step colour scales; Colour data in column (A-n):  $rgb^*(A_n, colorml = 1)$

TUB-test chart fei6; Test chart 2o\_e0 with 40x27=1080 colours; 1MR, DEH  
Digital equidistant 9 or 16 step colour scales

000n/w/cmy0/rgb  
->rgb\*\_de, 135-0:



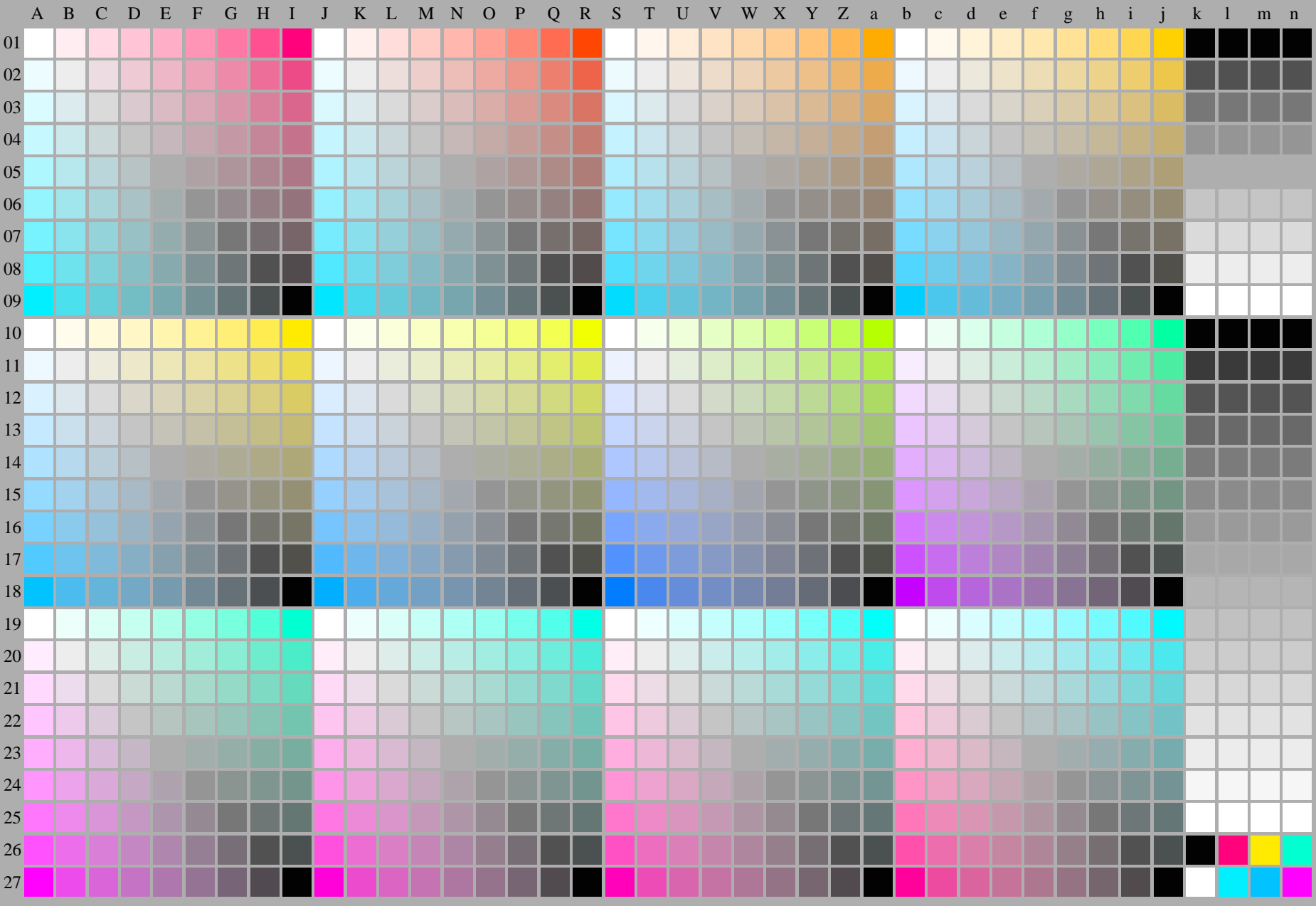
<http://farbe.li.tu-berlin.de/fei6/fei610fa.txt> /.ps; only vector graphic VG;  
see separate images of this page: <http://farbe.li.tu-berlin.de/fei6/fei6.htm>



see similar files of the whole serie: <http://farbe.li.tu-berlin.de/feis.htm>  
technical information: <http://farbe.li.tu-berlin.de/A/33872E.html>  
or <http://standards.iso.org/iso/9241/306/ed-2/index.html>

TUB registration: 20240301-fei6/fei610fa.txt /.ps  
application for evaluation and measurement of display or print output

TUB material: code=rh4ta

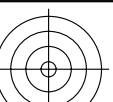
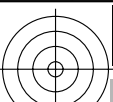


fei60-7n-136-0: Test chart 2o with 40x27=1080 colours; digital equidistant 9 or 16 step colour scales; Colour data in column (A-n):  $rgb^*(A_n, colorml = 1)$

TUB-test chart fei6; Test chart 2o\_e0 with 40x27=1080 colours; 1MR, DEH  
Digital equidistant 9 or 16 step colour scales

000n/w/cmy0/rgb  
→ $rgb^*_{de}$ , 136-0:

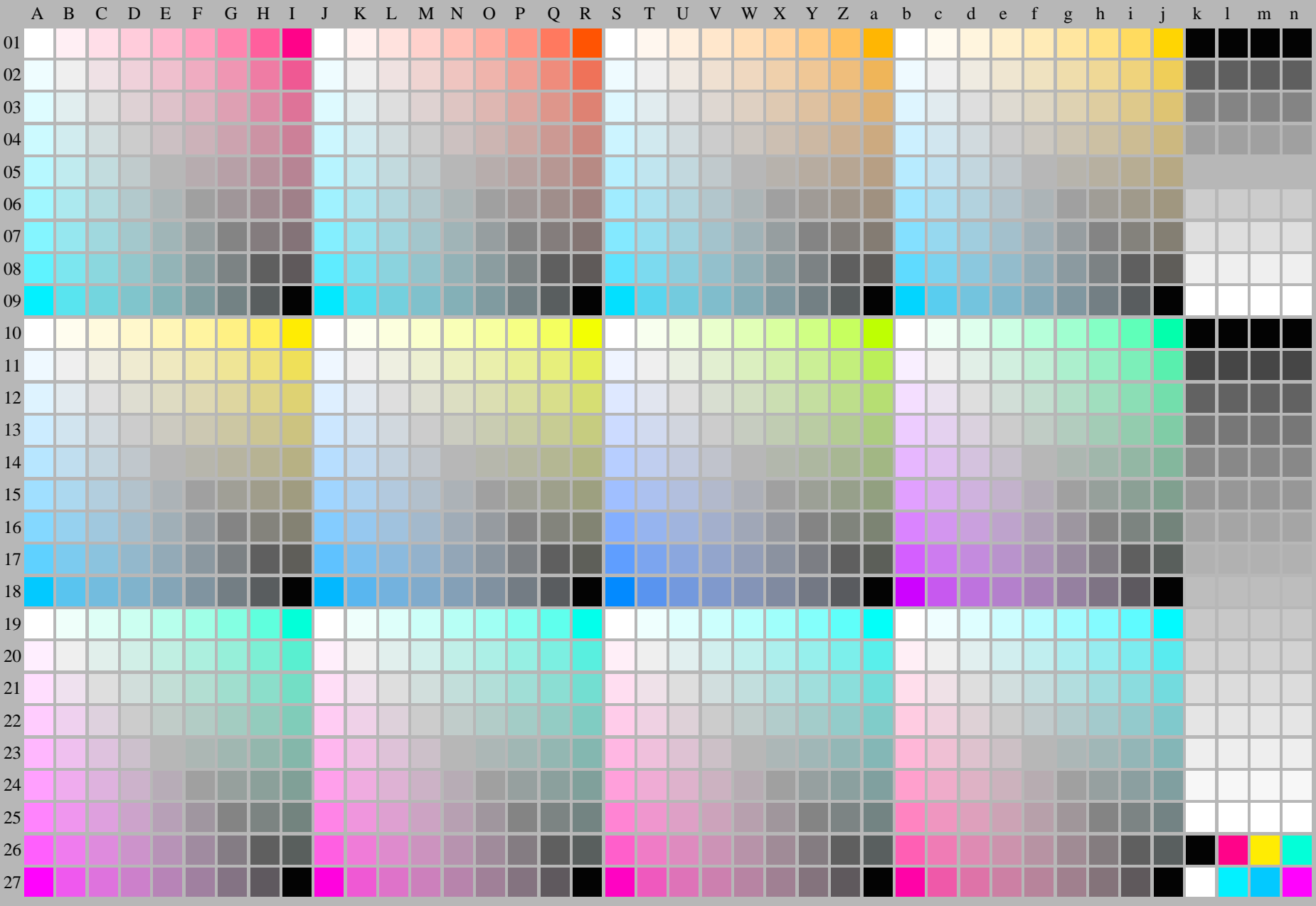
<http://farbe.li.tu-berlin.de/fei6/fei610fa.txt> /.ps; only vector graphic VG;  
see separate images of this page: <http://farbe.li.tu-berlin.de/fei6/fei6.htm>



see similar files of the whole series: <http://farbe.li.tu-berlin.de/feis.htm>  
technical information: <http://farbe.li.tu-berlin.de/A/33872E.html>  
or <http://standards.iso.org/iso/9241/306/ed-2/index.html>

TUB registration: 20240301-fei6/fei610fa.txt /.ps  
application for evaluation and measurement of display or print output

TUB material: code=rh4ta



fei6-7n-137-0: Test chart 2o with 40x27=1080 colours; digital equidistant 9 or 16 step colour scales; Colour data in column (A-n):  $rgb^*(A_n)$ ,  $colorml = 1$

TUB-test chart fei6; Test chart 2o\_e0 with 40x27=1080 colours; 1MR, DEH  
Digital equidistant 9 or 16 step colour scales

000n/w/cmy0/rgb  
→ $rgb^*_{de}$ , 137-0:

