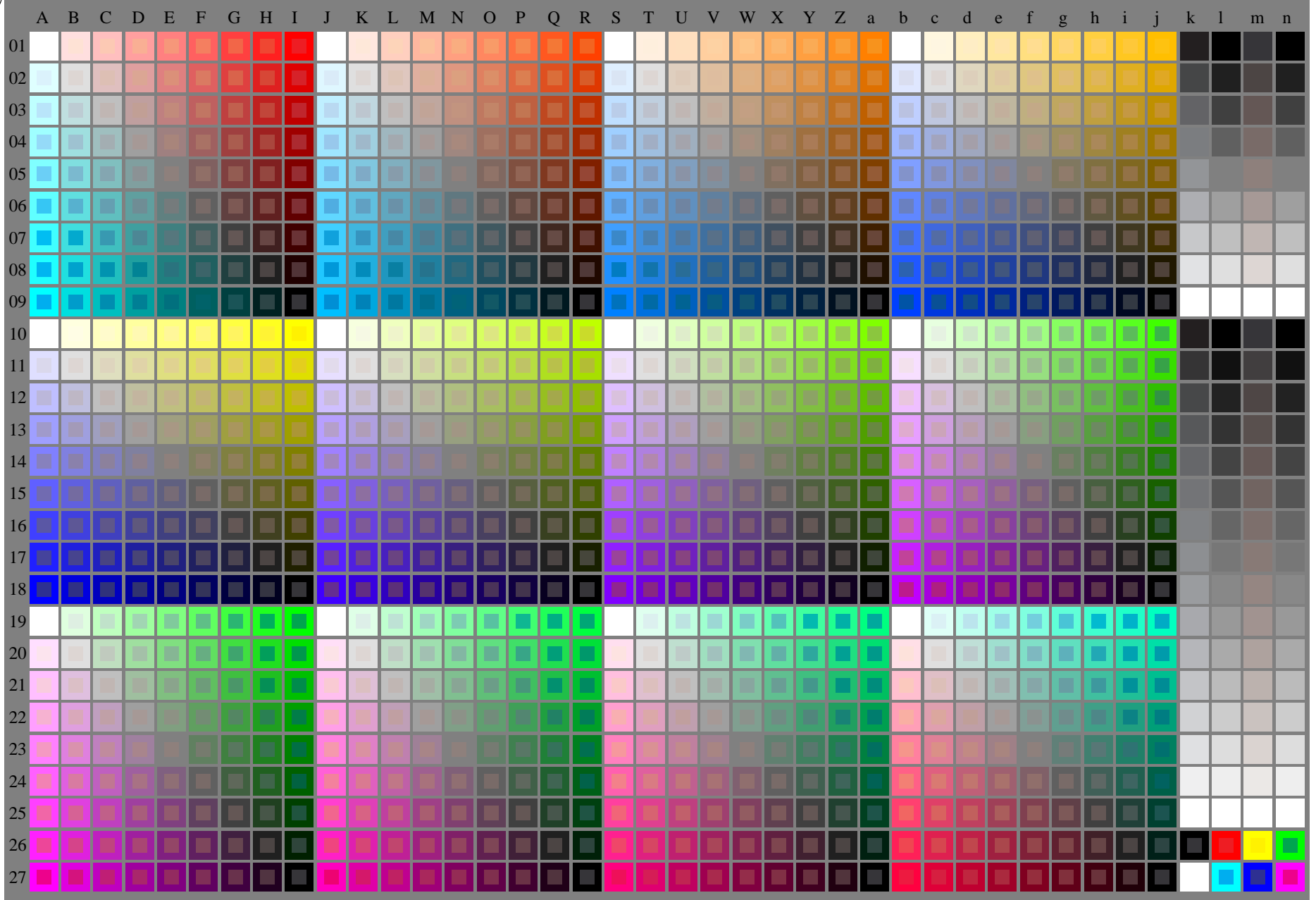


<http://farbe.li.tu-berlin.de/fei5/fei510na.txt> /ps; only vector graphic VG; start output see separate images of this page: <http://farbe.li.tu-berlin.de/fei5/fei5.htm>

see similar files of the whole series: <http://farbe.li.tu-berlin.de/feis.htm>
technical information: <http://farbe.li.tu-berlin.de/A/33872E.html>
or <http://standards.iso.org/iso/9241/306/ed-2/index.html>

TUB registration: 20240301-fei5/fei510na.txt /ps
application for evaluation and measurement of display or print output
TUB material: code=rh4ta



fei5-7n-030-0: Test chart 2o with 40x27=1080 colours; digital equidistant 9 or 16 step colour scales; Colour data in column (A-n): $rgb / cmy0 (A_j + k26_{n27}), 000n (k), w (l), nnn0 (m), www (n), colorml = 0$

TUB-test chart fei5; Test chart 2g_e0 with 40x27=1080 colours; DH
Digital equidistant 9 or 16 step colour scales

000n/w/cmy0/rgb
->rgb*_d, 030-0:

