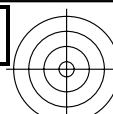
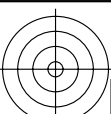


<http://farbe.li.tu-berlin.de/fei5/fei510fa.txt> /.ps; only vector graphic VG; start output  
see separate images of this page: <http://farbe.li.tu-berlin.de/fei5/fei5.htm>



C

M

Y

O

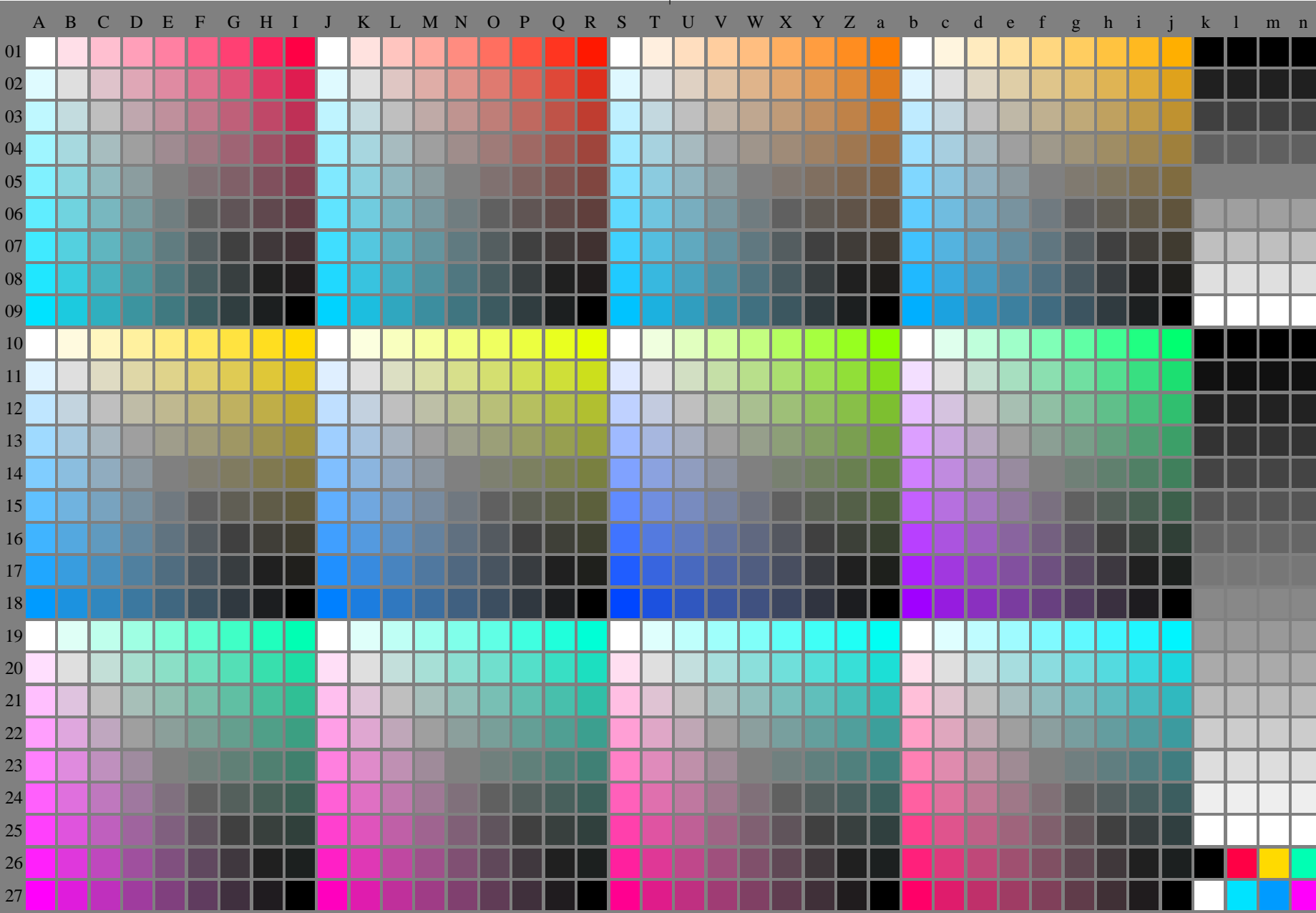
L

V

see similar files of the whole serie: <http://farbe.li.tu-berlin.de/feis.htm>  
technical information: <http://farbe.li.tu-berlin.de/A/33872E.html>  
or <http://standards.iso.org/iso/9241/306/ed-2/index.html>

TUB registration: 20240301-fei5/fei510fa.txt /.ps  
application for evaluation and measurement of display or print output

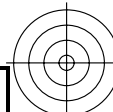
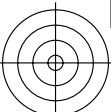
TUB material: code=rh4ta



fei5-7n-130-0: Test chart 2o with 40x27=1080 colours; digital equidistant 9 or 16 step colour scales; Colour data in column (A-n):  $rgb^*(A_n, colorml = 1)$

TUB-test chart fei5; Test chart 2g\_e0 with 40x27=1080 colours; 1MR, DEH  
Digital equidistant 9 or 16 step colour scales

000n/w/cmy0/rgb  
->rgb\*\_de, 130-0:



C

M

Y

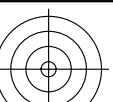
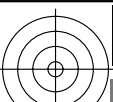
O

L

V

C

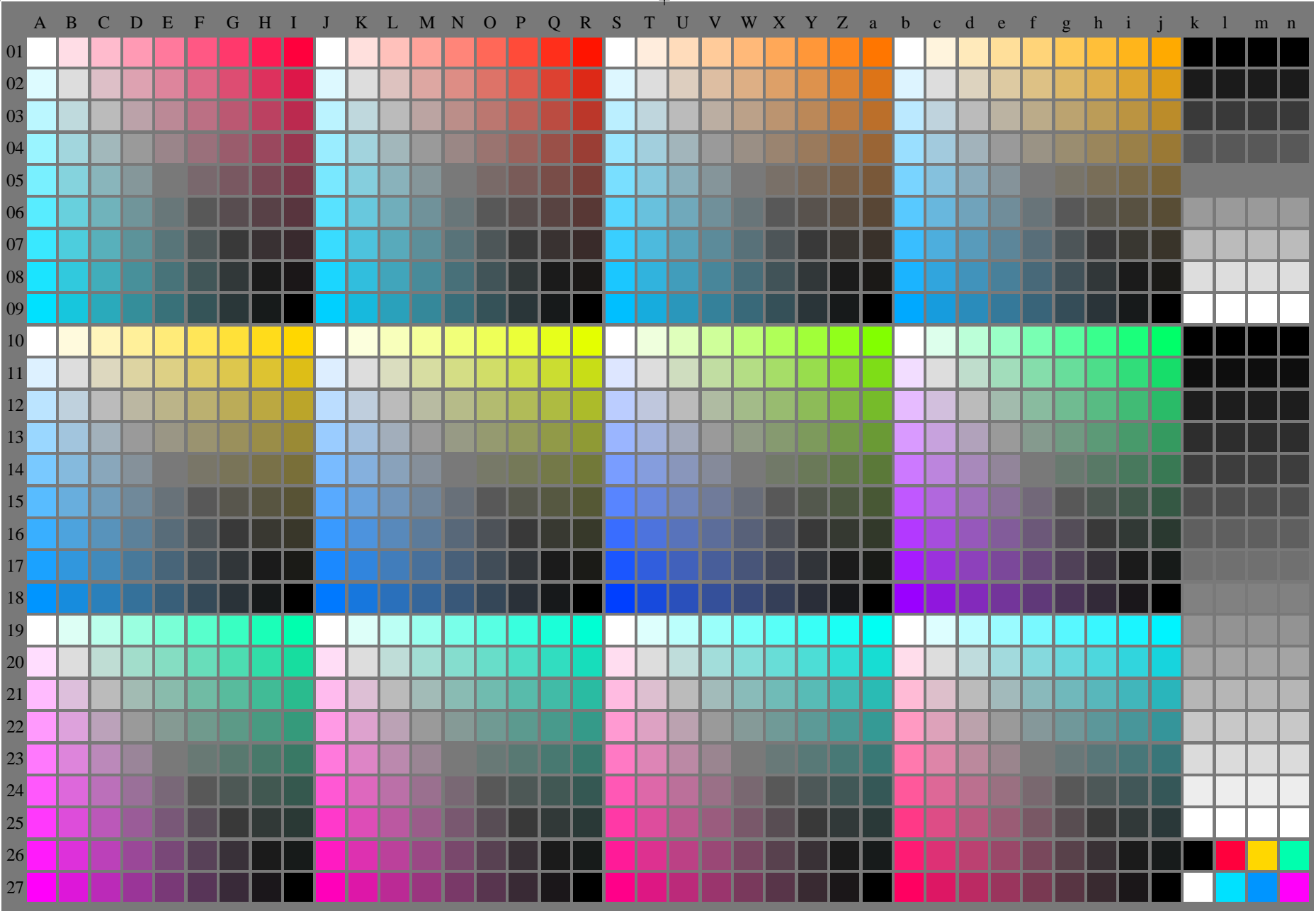
<http://farbe.li.tu-berlin.de/fei5/fei510fa.txt> /.ps; only vector graphic VG;  
see separate images of this page: <http://farbe.li.tu-berlin.de/fei5/fei5.htm>



see similar files of the whole series: <http://farbe.li.tu-berlin.de/feis.htm>  
technical information: <http://farbe.li.tu-berlin.de/A/33872E.html>  
or <http://standards.iso.org/iso/9241/306/ed-2/index.html>

TUB registration: 20240301-fei5/fei510fa.txt /.ps  
application for evaluation and measurement of display or print output

TUB material: code=rh4ta

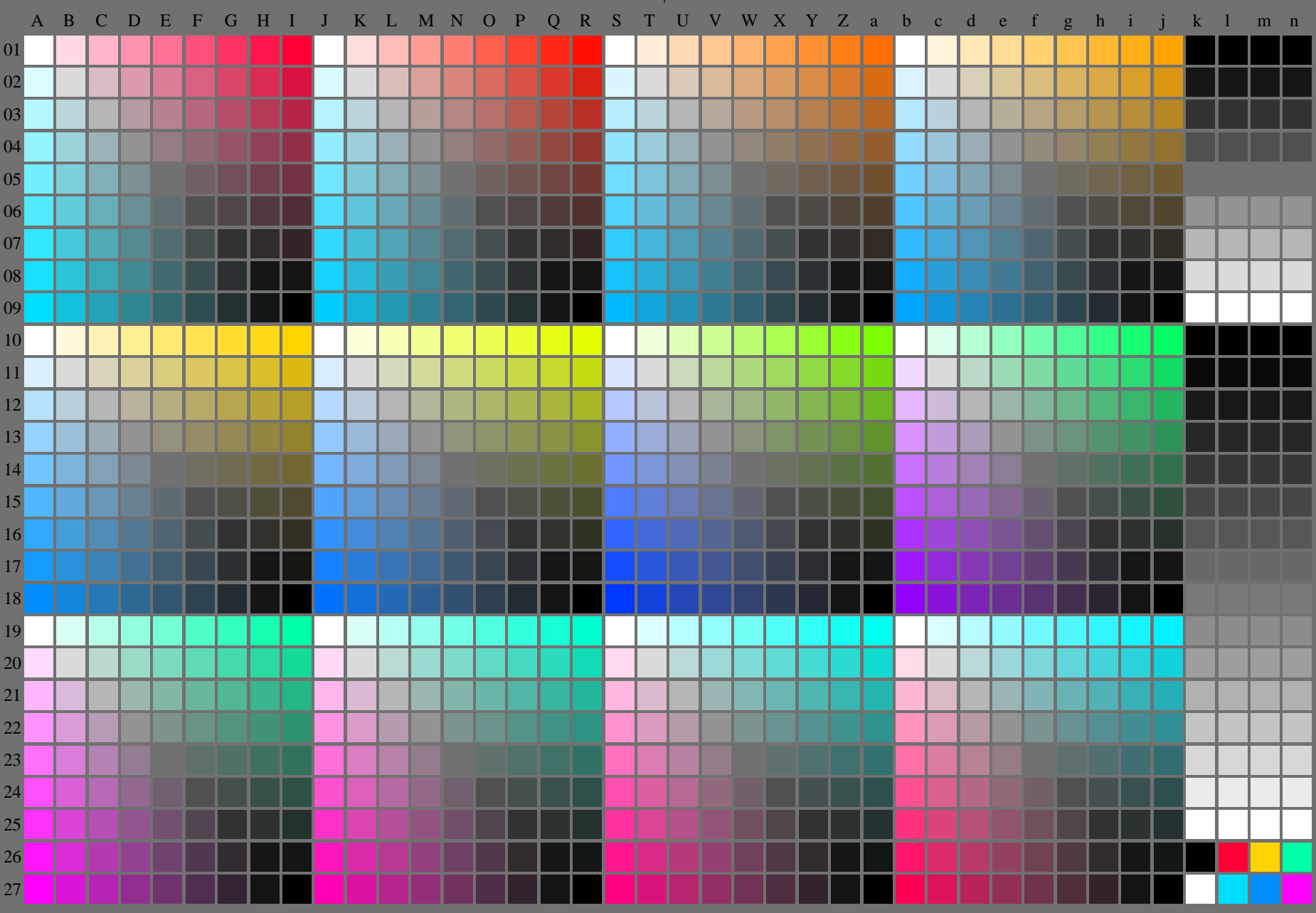
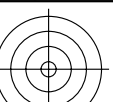
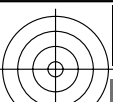


fei50-7n-131-0: Test chart 2o with 40x27=1080 colours; digital equidistant 9 or 16 step colour scales; Colour data in column (A-n):  $rgb^*(A_n, colorml = 1)$

TUB-test chart fei5; Test chart 2g\_e0 with 40x27=1080 colours; 1MR, DEH  
Digital equidistant 9 or 16 step colour scales

000n/w/cmy0/rgb  
->rgb\*\_de, 130-0:

<http://farbe.li.tu-berlin.de/fei5/fei510fa.txt> /.ps; only vector graphic VG;  
see separate images of this page: <http://farbe.li.tu-berlin.de/fei5/fei5.htm>



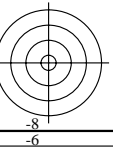
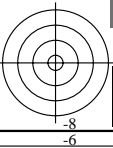
see similar files of the whole series: <http://farbe.li.tu-berlin.de/feis.htm>  
technical information: <http://farbe.li.tu-berlin.de/A/33872E.html>  
or <http://standards.iso.org/iso/9241/306/ed-2/index.html>

TUB registration: 20240301-fei5/fei510fa.txt /.ps  
application for evaluation and measurement of display or print output  
TUB material: code=rh4ta

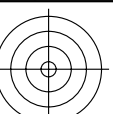
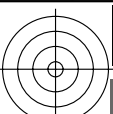
fei50-7n-132-0: Test chart 2o with 40x27=1080 colours; digital equidistant 9 or 16 step colour scales; Colour data in column (A-n):  $rgb^*(A_n, colorml = 1)$

TUB-test chart fei5; Test chart 2g\_e0 with 40x27=1080 colours; 1MR, DEH  
Digital equidistant 9 or 16 step colour scales

000n/w/cmy0/rgb  
->rgb\*\_de, 130-0:



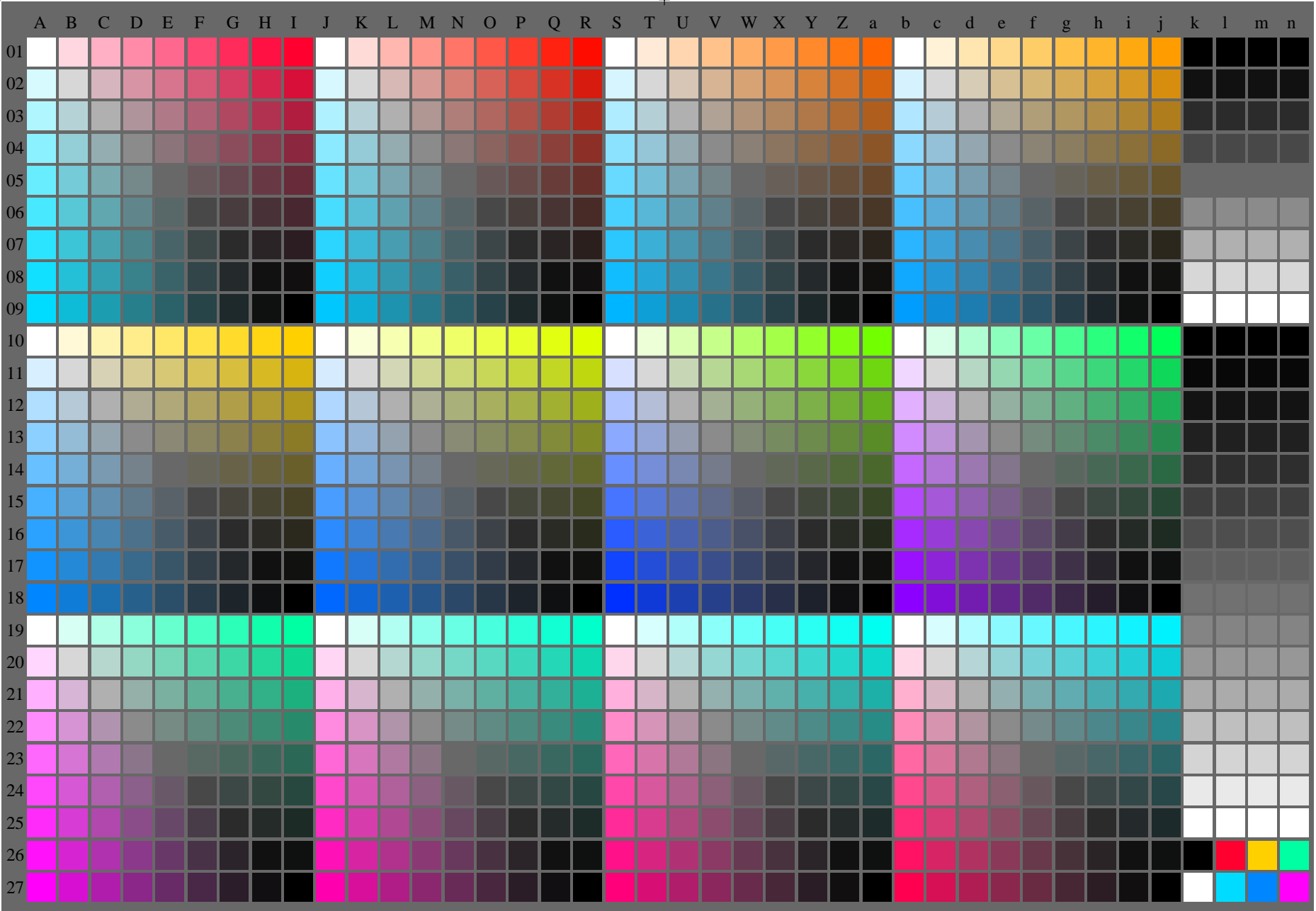
<http://farbe.li.tu-berlin.de/fei5/fei510fa.txt> /.ps; only vector graphic VG;  
see separate images of this page: <http://farbe.li.tu-berlin.de/fei5/fei5.htm>



see similar files of the whole series: <http://farbe.li.tu-berlin.de/feis.htm>  
technical information: <http://farbe.li.tu-berlin.de/A/33872E.html>  
or <http://standards.iso.org/iso/9241/306/ed-2/index.html>

TUB registration: 20240301-fei5/fei510fa.txt /.ps  
application for evaluation and measurement of display or print output

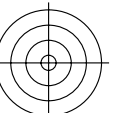
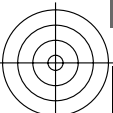
TUB material: code=rh4ta



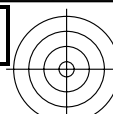
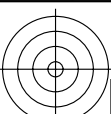
fei50-7n-133-0: Test chart 2o with 40x27=1080 colours; digital equidistant 9 or 16 step colour scales; Colour data in column (A-n):  $rgb^*(A_n, colorml = 1)$

TUB-test chart fei5; Test chart 2g\_e0 with 40x27=1080 colours; 1MR, DEH  
Digital equidistant 9 or 16 step colour scales

000n/w/cmy0/rgb  
->rgb\*\_de, 130-0:



<http://farbe.li.tu-berlin.de/fei5/fei510fa.txt> /.ps; only vector graphic VG;  
see separate images of this page: <http://farbe.li.tu-berlin.de/fei5/fei5.htm>



C

M

Y

O

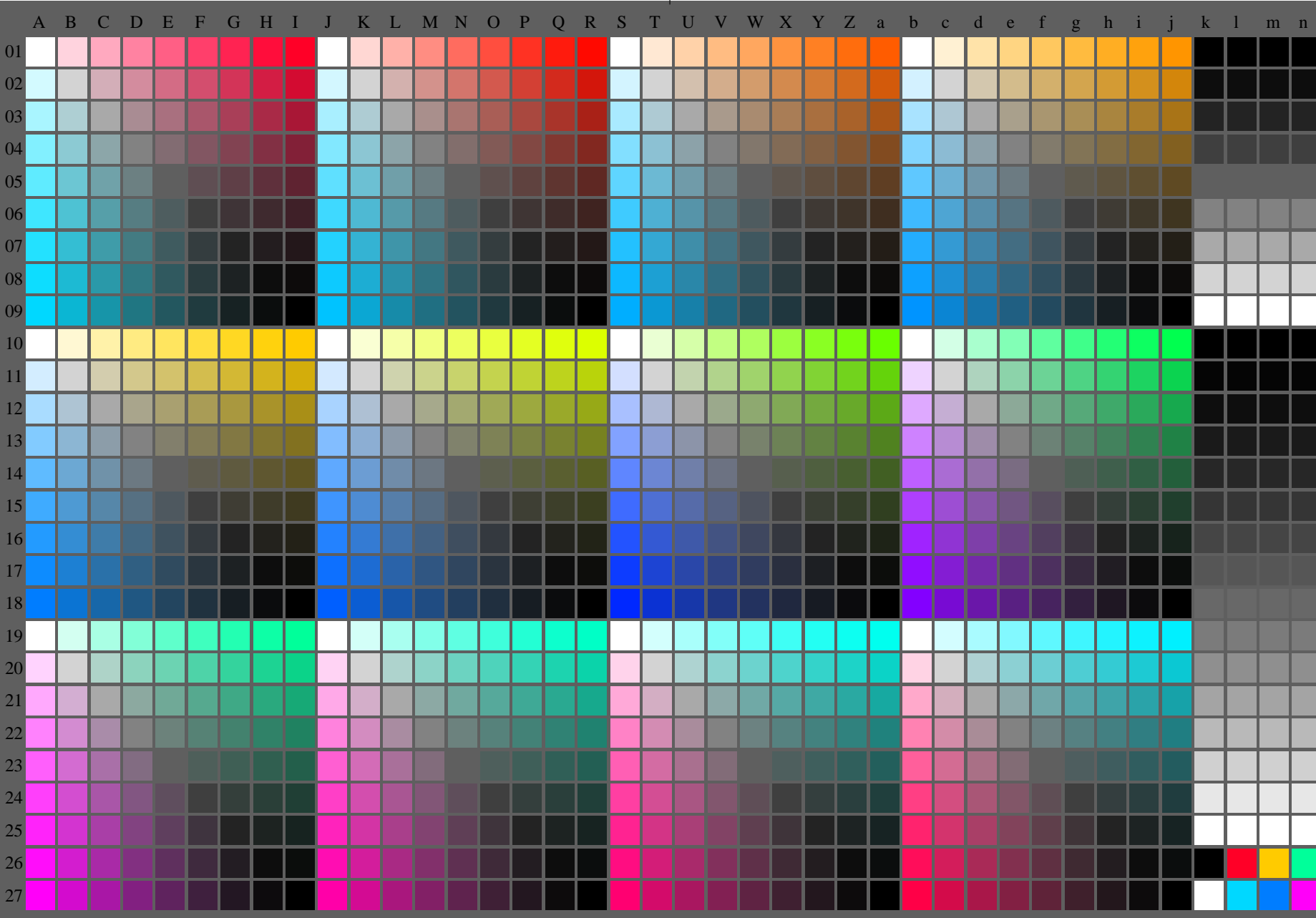
L

V

see similar files of the whole series: <http://farbe.li.tu-berlin.de/feis.htm>  
technical information: <http://farbe.li.tu-berlin.de/A/33872E.html>  
or <http://standards.iso.org/iso/9241/306/ed-2/index.html>

TUB registration: 20240301-fei5/fei510fa.txt /.ps  
application for evaluation and measurement of display or print output

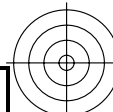
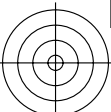
TUB material: code=rh4ta



fei50-7n-134-0: Test chart 2o with 40x27=1080 colours; digital equidistant 9 or 16 step colour scales; Colour data in column (A-n):  $rgb^* (A_n, colorml = 1)$

TUB-test chart fei5; Test chart 2g\_e0 with 40x27=1080 colours; 1MR, DEH  
Digital equidistant 9 or 16 step colour scales

000n/w/cmy0/rgb  
->rgb\*\_de, 130-0:



C

M

Y

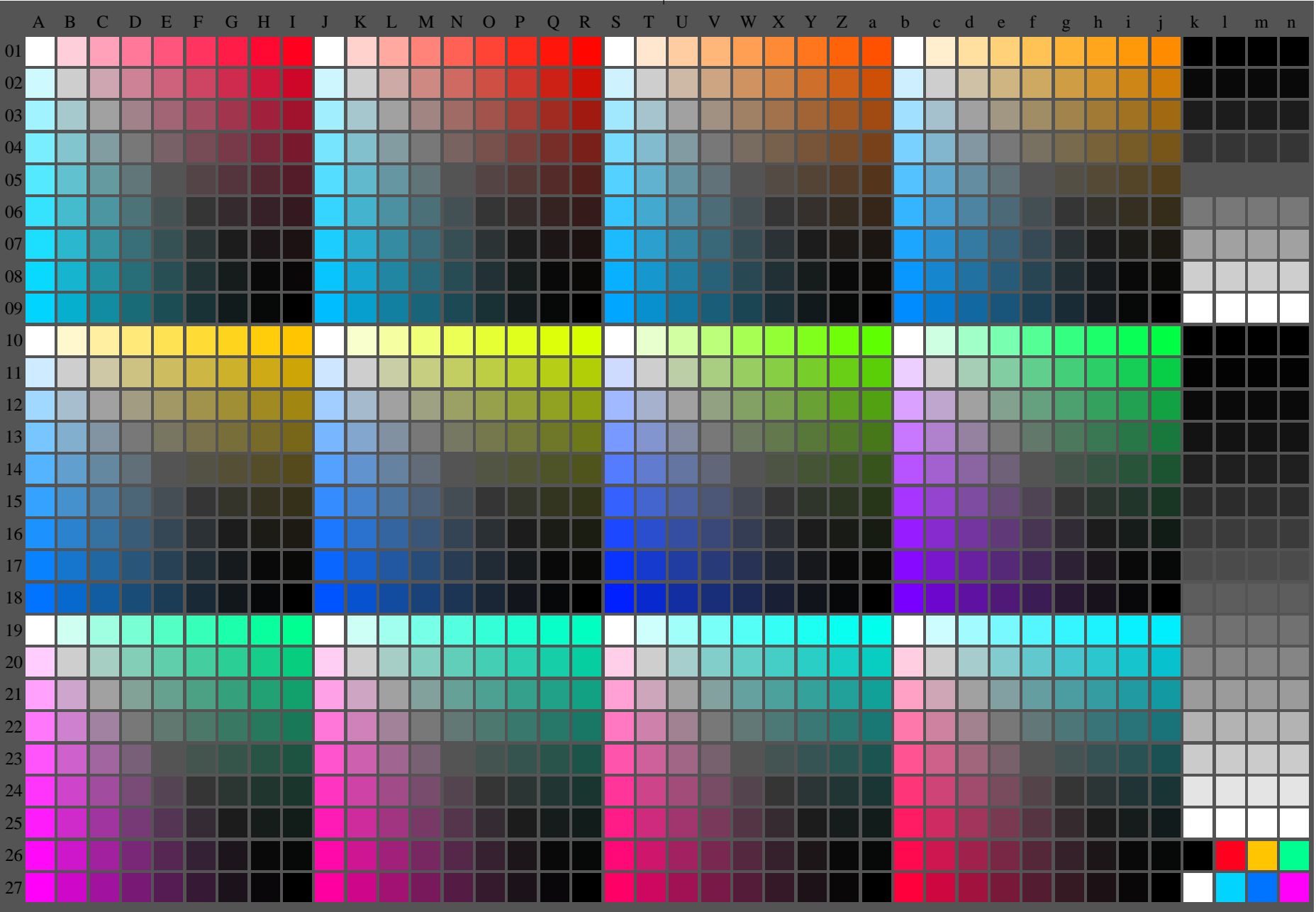
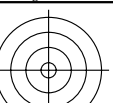
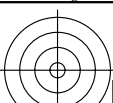
O

L

V

C

<http://farbe.li.tu-berlin.de/fei5/fei510fa.txt> /.ps; only vector graphic VG;  
see separate images of this page: <http://farbe.li.tu-berlin.de/fei5/fei5.htm>



see similar files of the whole series: <http://farbe.li.tu-berlin.de/feis.htm>  
technical information: <http://farbe.li.tu-berlin.de/A/33872E.html>  
or <http://standards.iso.org/iso/9241/306/ed-2/index.html>

TUB registration: 20240301-fei5/fei510fa.txt /.ps  
application for evaluation and measurement of display or print output  
TUB material: code=rh4ta

fei50-7n-135-0: Test chart 2o with 40x27=1080 colours; digital equidistant 9 or 16 step colour scales; Colour data in column (A-n):  $rgb^* (A_n, colorml = 1)$



TUB-test chart fei5; Test chart 2g\_e0 with 40x27=1080 colours; 1MR, DEH  
Digital equidistant 9 or 16 step colour scales

000n/w/cmy0/rgb  
->rgb\*\_de, 130-0:

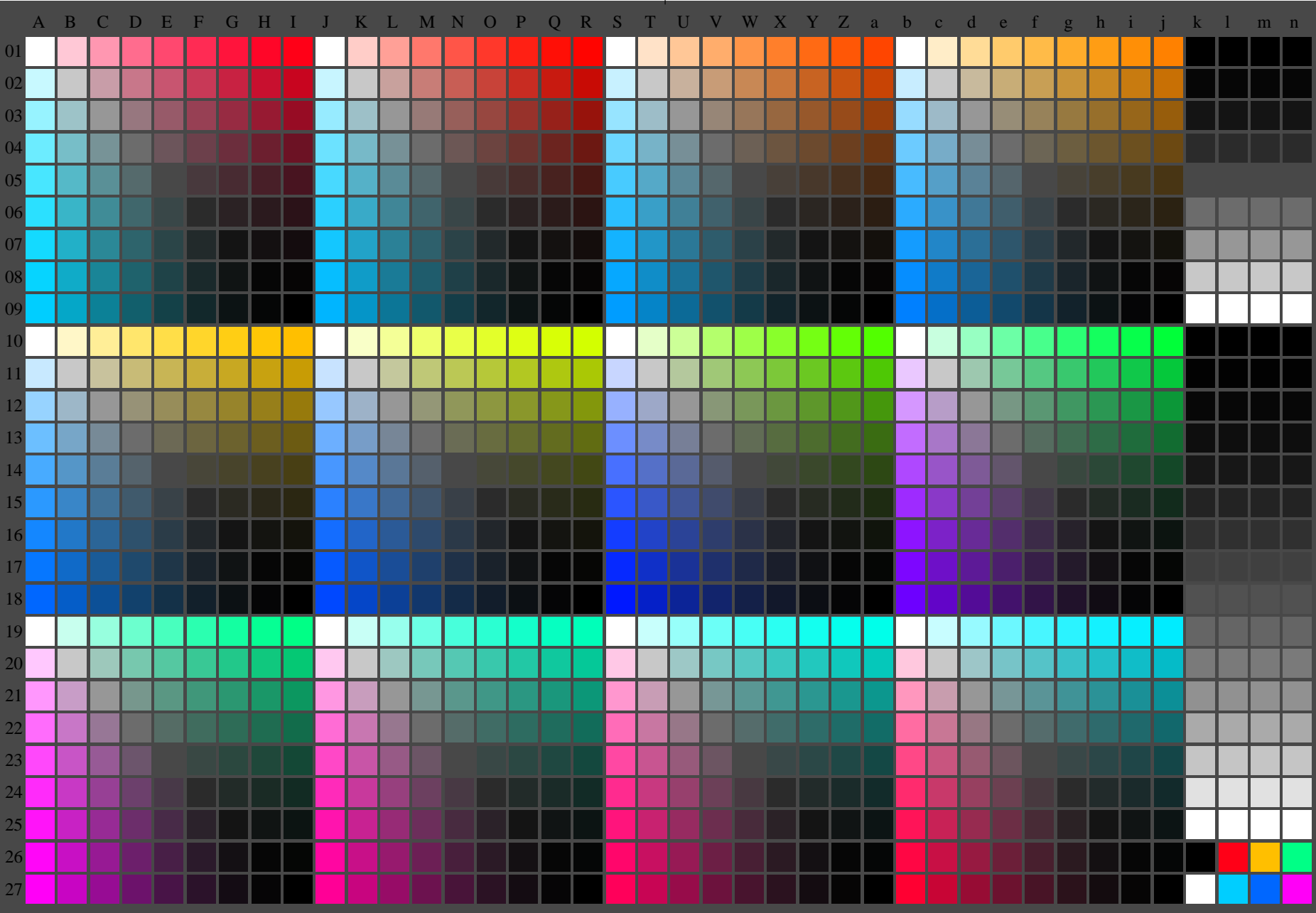


<http://farbe.li.tu-berlin.de/fei5/fei510fa.txt> /.ps; only vector graphic VG;  
see separate images of this page: <http://farbe.li.tu-berlin.de/fei5/fei5.htm>

see similar files of the whole series: <http://farbe.li.tu-berlin.de/feis.htm>  
technical information: <http://farbe.li.tu-berlin.de/A/33872E.html>  
or <http://standards.iso.org/iso/9241/306/ed-2/index.html>

TUB registration: 20240301-fei5/fei510fa.txt /.ps  
application for evaluation and measurement of display or print output

TUB material: code=rh4ta



fei50-7n-136-0: Test chart 2o with 40x27=1080 colours; digital equidistant 9 or 16 step colour scales; Colour data in column (A-n):  $rgb^* (A_n, colorml = 1)$

TUB-test chart fei5; Test chart 2g\_e0 with 40x27=1080 colours; 1MR, DEH  
Digital equidistant 9 or 16 step colour scales

000n/w/cmy0/rgb  
->rgb\*\_de, 130-0:

<http://farbe.li.tu-berlin.de/fei5/fei510fa.txt> /.ps; only vector graphic VG;  
see separate images of this page: <http://farbe.li.tu-berlin.de/fei5/fei5.htm>



C

M

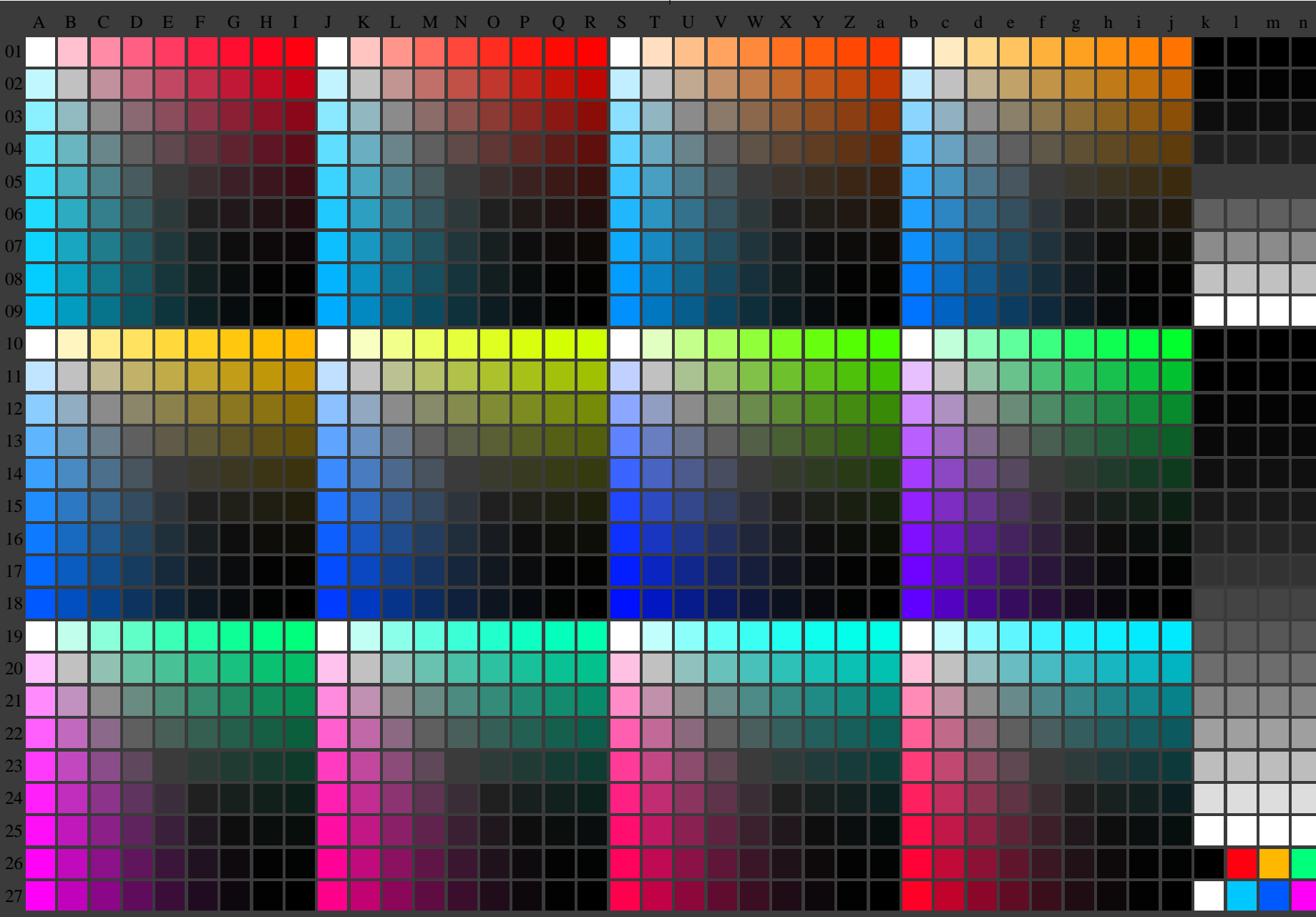
Y

O

L

V

see similar files of the whole series: <http://farbe.li.tu-berlin.de/feis.htm>  
technical information: <http://farbe.li.tu-berlin.de/A/33872E.html>  
or <http://standards.iso.org/iso/9241/306/ed-2/index.html>



TUB registration: 20240301-fei5/fei510fa.txt /.ps  
application for evaluation and measurement of display or print output

TUB material: code=rh4ta

fei50-7n-137-0: Test chart 2o with 40x27=1080 colours; digital equidistant 9 or 16 step colour scales; Colour data in column (A-n):  $rgb^* (A_n, colorml = 1)$



TUB-test chart fei5; Test chart 2g\_e0 with 40x27=1080 colours; 1MR, DEH  
Digital equidistant 9 or 16 step colour scales

000n/w/cmy0/rgb  
->rgb\*\_de, 130-0:

