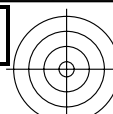
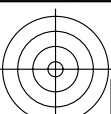


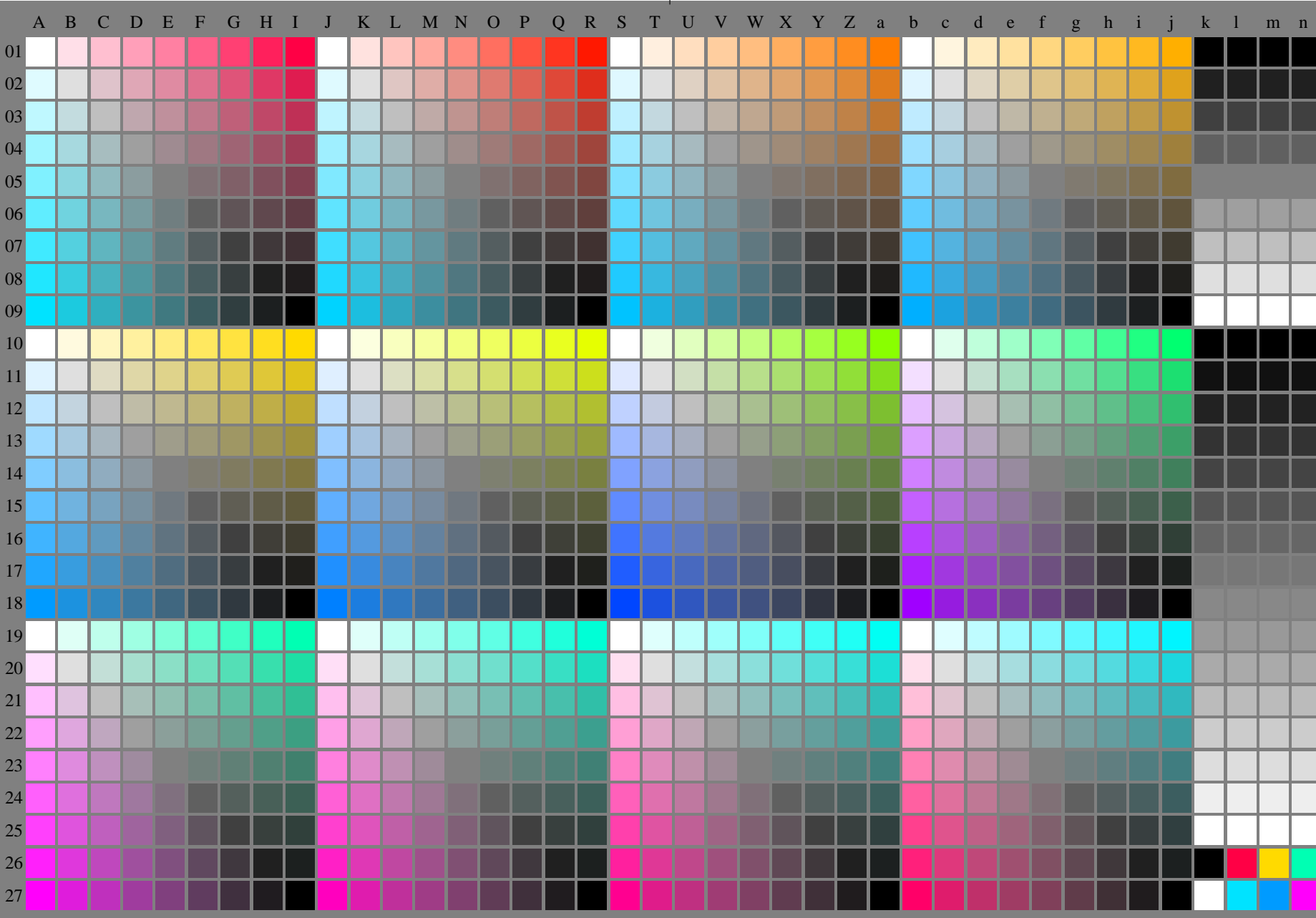
<http://farbe.li.tu-berlin.de/fei5/fei510fa.txt> /.ps; only vector graphic VG; start output
see separate images of this page: <http://farbe.li.tu-berlin.de/fei5/fei5.htm>



see similar files of the whole series: <http://farbe.li.tu-berlin.de/feis.htm>
technical information: <http://farbe.li.tu-berlin.de/A/33872E.html>
or <http://standards.iso.org/iso/9241/306/ed-2/index.html>

TUB registration: 20240301-fei5/fei510fa.txt /.ps
application for evaluation and measurement of display or print output

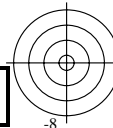
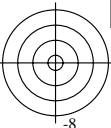
TUB material: code=rh4ta



fei50-7n-130-0: Test chart 2o with 40x27=1080 colours; digital equidistant 9 or 16 step colour scales; Colour data in column (A-n): $rgb^*(A_n, colorml = 1)$

TUB-test chart fei5; Test chart 2g_e0 with 40x27=1080 colours; 1MR, DEH
Digital equidistant 9 or 16 step colour scales

000n/w/cmy0/rgb
->rgb*_de, 130-0:



<http://farbe.li.tu-berlin.de/fei5/fei510fa.txt> /ps; only vector graphic VG; start output
see separate images of this page: <http://farbe.li.tu-berlin.de/fei5/fei5.htm>

	A	B	C	D	E	F	G	H	I	J	K	L	M	N	O	P	Q	R	S	T	U	V	W	X	Y	Z	a	b	c	d	e	f	g	h	i	j	k	l	m	n	o	p
01	0001 b01	0010 c01	0019 d01	0028 e01	0037 f01	0046 g01	0055 h01	0064 i01	0073 j01	0244 b01	0253 c01	0262 d01	0271 e01	0280 f01	0289 g01	0298 h01	0307 i01	0316 j01	0487 b01	0496 c01	0505 d01	0514 e01	0523 f01	0532 g01	0541 h01	0550 i01	0559 j01	0730 b01	0739 c01	0748 d01	0757 e01	0766 f01	0775 g01	0784 h01	0793 i01	0802 j01	0972 b01	0981 i01	0990 m01	0999 n01		
02	0002 b02	0011 c02	0020 d02	0029 e02	0038 f02	0047 g02	0056 h02	0065 i02	0074 j02	0245 b02	0254 c02	0263 d02	0272 e02	0281 f02	0290 g02	0299 h02	0308 i02	0317 j02	0488 b02	0497 c02	0506 d02	0515 e02	0524 f02	0533 g02	0542 h02	0551 i02	0560 j02	0731 b02	0740 c02	0749 d02	0758 e02	0767 f02	0776 g02	0785 h02	0794 i02	0803 j02	0973 b02	0982 i02	0991 m02	0999 n02		
03	0003 b03	0012 c03	0021 d03	0030 e03	0039 f03	0048 g03	0057 h03	0066 i03	0075 j03	0246 b03	0255 c03	0264 d03	0273 e03	0282 f03	0291 g03	0300 h03	0309 i03	0318 j03	0489 b03	0498 c03	0507 d03	0516 e03	0525 f03	0534 g03	0543 h03	0552 i03	0561 j03	0732 b03	0741 c03	0750 d03	0759 e03	0768 f03	0777 g03	0786 h03	0795 i03	0804 j03	0974 b03	0983 i03	0992 m03	1001 n03		
04	0004 b04	0013 c04	0022 d04	0031 e04	0040 f04	0049 g04	0058 h04	0067 i04	0076 j04	0247 b04	0256 c04	0265 d04	0274 e04	0283 f04	0292 g04	0301 h04	0310 i04	0319 j04	0490 b04	0499 c04	0508 d04	0517 e04	0526 f04	0535 g04	0544 h04	0553 i04	0562 j04	0733 b04	0742 c04	0751 d04	0760 e04	0769 f04	0778 g04	0787 h04	0796 i04	0805 j04	0975 b04	0984 i04	0993 m04	1002 n04		
05	0005 b05	0014 c05	0023 d05	0032 e05	0041 f05	0050 g05	0059 h05	0068 i05	0077 j05	0248 b05	0257 c05	0266 d05	0275 e05	0284 f05	0293 g05	0302 h05	0311 i05	0320 j05	0491 b05	0500 c05	0509 d05	0518 e05	0527 f05	0536 g05	0545 h05	0554 i05	0563 j05	0734 b05	0743 c05	0752 d05	0761 e05	0770 f05	0779 g05	0788 h05	0797 i05	0806 j05	0976 b05	0985 i05	0994 m05	1003 n05		
06	0006 b06	0015 c06	0024 d06	0033 e06	0042 f06	0051 g06	0060 h06	0069 i06	0078 j06	0249 b06	0258 c06	0267 d06	0276 e06	0285 f06	0294 g06	0303 h06	0312 i06	0321 j06	0492 b06	0501 c06	0510 d06	0519 e06	0528 f06	0537 g06	0546 h06	0555 i06	0564 j06	0735 b06	0744 c06	0753 d06	0762 e06	0771 f06	0780 g06	0789 h06	0798 i06	0807 j06	0977 b06	0986 i06	0995 m06	1004 n06		
07	0007 b07	0016 c07	0025 d07	0034 e07	0043 f07	0052 g07	0061 h07	0070 i07	0079 j07	0250 b07	0259 c07	0268 d07	0277 e07	0286 f07	0295 g07	0304 h07	0313 i07	0322 j07	0493 b07	0502 c07	0511 d07	0520 e07	0529 f07	0538 g07	0547 h07	0556 i07	0565 j07	0736 b07	0745 c07	0754 d07	0763 e07	0772 f07	0781 g07	0790 h07	0799 i07	0808 j07	0978 b07	0987 i07	0996 m07	1005 n07		
08	0008 b08	0017 c08	0026 d08	0035 e08	0044 f08	0053 g08	0062 h08	0071 i08	0080 j08	0251 b08	0260 c08	0269 d08	0278 e08	0287 f08	0296 g08	0305 h08	0314 i08	0323 j08	0494 b08	0503 c08	0512 d08	0521 e08	0530 f08	0539 g08	0548 h08	0557 i08	0566 j08	0737 b08	0746 c08	0755 d08	0764 e08	0773 f08	0782 g08	0791 h08	0800 i08	0809 j08	0979 b08	0988 i08	0997 m08	1006 n08		
09	0009 b09	0018 c09	0027 d09	0036 e09	0045 f09	0054 g09	0063 h09	0072 i09	0081 j09	0252 b09	0261 c09	0270 d09	0279 e09	0288 f09	0297 g09	0306 h09	0315 i09	0324 j09	0495 b09	0504 c09	0513 d09	0522 e09	0531 f09	0540 g09	0549 h09	0558 i09	0567 j09	0738 b09	0747 c09	0756 d09	0765 e09	0774 f09	0783 g09	0792 h09	0801 i09	0810 j09	0980 b09	0989 i09	0998 m09	1007 n09		
10	0010 b10	0019 c10	0028 d10	0037 e10	0046 f10	0055 g10	0064 h10	0073 i10	0082 j10	0325 b10	0334 c10	0343 d10	0352 e10	0361 f10	0370 g10	0379 h10	0388 i10	0397 j10	0568 b10	0577 c10	0586 d10	0595 e10	0604 f10	0613 g10	0622 h10	0631 i10	0640 j10	0811 b10	0820 c10	0829 d10	0838 e10	0847 f10	0856 g10	0865 h10	0874 i10	0883 j10	1008 b10	1017 i10	1026 m10	1035 n10		
11	0083 b11	0092 c11	0101 d11	0110 e11	0119 f11	0128 g11	0137 h11	0146 i11	0155 j11	0326 b11	0335 c11	0344 d11	0353 e11	0362 f11	0371 g11	0380 h11	0389 i11	0398 j11	0569 b11	0578 c11	0587 d11	0596 e11	0605 f11	0614 g11	0623 h11	0632 i11	0641 j11	0812 b11	0821 c11	0830 d11	0839 e11	0848 f11	0857 g11	0866 h11	0875 i11	0884 j11	1009 b11	1018 i11	1027 m11	1036 n11		
12	0075 b12	0075 c12	0114 d12	0114 e12	0114 f12	0114 g12	0114 h12	0114 i12	0114 j12	0327 b12	0336 c12	0345 d12	0354 e12	0363 f12	0372 g12	0381 h12	0390 i12	0399 j12	0570 b12	0579 c12	0588 d12	0597 e12	0606 f12	0615 g12	0624 h12	0633 i12	0642 j12	0813 b12	0822 c12	0831 d12	0840 e12	0849 f12	0858 g12	0867 h12	0876 i12	0885 j12	1010 b12	1019 i12	1028 m12	1037 n12		
13	0085 b13	0094 c13	0103 d13	0112 e13	0121 f13	0130 g13	0139 h13	0148 i13	0157 j13	0328 b13	0337 c13	0346 d13	0355 e13	0364 f13	0373 g13	0382 h13	0391 i13	0400 j13	0571 b13	0580 c13	0589 d13	0598 e13	0607 f13	0616 g13	0625 h13	0634 i13	0643 j13	0814 b13	0823 c13	0832 d13	0841 e13	0850 f13	0859 g13	0868 h13	0877 i13	0886 j13	1011 b13	1020 i13	1029 m13	1038 n13		
14	0086 b14	0095 c14	0104 d14	0113 e14	0122 f14	0131 g14	0140 h14	0149 i14	0158 j14	0329 b14	0338 c14	0347 d14	0356 e14	0365 f14	0374 g14	0383 h14	0392 i14	0401 j14	0572 b14	0581 c14	0590 d14	0599 e14	0608 f14	0617 g14	0626 h14	0635 i14	0644 j14	0815 b14	0824 c14	0833 d14	0842 e14	0851 f14	0860 g14	0869 h14	0878 i14	0887 j14	1012 b14	1021 i14	1030 m14	1039 n14		
15	0087 b15	0096 c15	0105 d15	0114 e15	0123 f15	0132 g15	0141 h15	0150 i15	0159 j15	0330 b15	0339 c15	0348 d15	0357 e15	0366 f15	0375 g15	0384 h15	0393 i15	0402 j15	0573 b15	0582 c15	0591 d15	0600 e15	0609 f15	0618 g15	0627 h15	0636 i15	0645 j15	0816 b15	0825 c15	0834 d15	0843 e15	0852 f15	0861 g15	0870 h15	0879 i15	0888 j15	1013 b15	1022 i15	1031 m15	1040 n15		
16	0088 b16	0097 c16	0106 d16	0115 e16	0124 f16	0133 g16	0142 h16	0151 i16	0160 j16	0331 b16	0340 c16	0349 d16	0358 e16	0367 f16	0376 g16	0385 h16	0394 i16	0403 j16	0574 b16	0583 c16	0592 d16	0601 e16	0610 f16	0619 g16	0628 h16	0637 i16	0646 j16	0817 b16	0826 c16	0835 d16	0844 e16	0853 f16	0862 g16	0871 h16	0880 i16	0889 j16	1014 b16	1023 i16	1032 m16	1041 n16		
17	0089 b17	0098 c17	0107 d17	0116 e17	0125 f17	0134 g17	0143 h17	0152 i17	0161 j17	0332 b17	0341 c17	0350 d17	0359 e17	0368 f17	0377 g17	0386 h17	0395 i17	0404 j17	0575 b17	0584 c17	0593 d17	0602 e17	0611 f17	0620 g17	0629 h17	0638 i17	0647 j17	0818 b17	0827 c17	0836 d17	0845 e17	0854 f17	0863 g17	0872 h17	0881 i17	0890 j17	1015 b17	1024 i17	1033 m17	1042 n17		
18	0090 b18	0099 c18	0108 d18	0117 e18	0126 f18	0135 g18	0144 h18	0153 i18	0162 j18	0333 b18	0342 c18	0351 d18	0360 e18	0369 f18	0378 g18	0387 h18	0396 i18	0405 j18	0576 b18	0585 c18	0594 d18	0603 e18	0612 f18	0621 g18	0630 h18	0639 i18	0648 j18	0819 b18	0828 c18	0837 d18	0846 e18	0855 f18	0864 g18	0873 h18	0882 i18	0891 j18	1016 b18	1025 i18	1034 m18	1043 n18		
19	0163 b19	0172 c19	0181 d19	0190 e19	0199 f19	0208 g19	0217 h19	0226 i19	0235 j19	0406 b19	0415 c19	0424 d19	0433 e19	0442 f19	0451 g19	0460 h19	0469 i19	0478 j19	0649 b19	0658 c19	0667 d19	0676 e19	0685 f19	0694 g19	0703 h19	0712 i19	0721 j19	0892 b19	0901 c19	0910 d19	0919 e19	0928 f19	0937 g19	0946 h19	0955 i19	0964 j19	1017 b19	1026 i19	1035 m19	1044 n19		
20	0164 b20	0173 c20	0182 d20	0191 e20	0200 f20	0209 g20	0218 h20	0227 i20	0236 j20	0407 b20	0416 c20	0425 d20	0434 e20	0443 f20	0452 g20	0461 h20	0470 i20	0479 j20	0650 b20	0659 c20	0668 d20	0677 e20	0686 f20	0695 g20	0704 h20	0713 i20	0722 j20	0893 b20	0902 c20	0911 d20	0920 e20	0929 f20	0938 g20	0947 h20	0956 i20	0965 j20	1018 b20	1027 i20	1036 m20	1045 n20		
21	0165 b21	0174 c21	0183 d21	0192 e21	0201 f21	0210 g21	0219 h21	0228 i21	0237 j21	0408 b21	0417 c21	0426 d21	0435 e21	0444 f21	0453 g21	0462 h21	0471 i21	0480 j21	0651 b21	0660 c21	0669 d21	0678 e21	0687 f21	0696 g21	0705 h21	0714 i21	0723 j21	0894 b21	0903 c21	0912 d21	0921 e21	0930 f21	0939 g21	0948 h21	0957 i21	0966 j21	1019 b21	1028 i21	1037 m21	1046 n21		
22	0166 b22	0175 c22	0184 d22	0193 e22	0202 f22	0211 g22	0220 h22	0229 i22	0238 j22	0409 b22	0418 c22	0427 d22	0436 e22	0445 f22	0454 g22	0463 h22	0472 i22	0481 j22	0652 b22	0661 c22	0670 d22	0679 e22	0688 f22	0697 g22	0706 h22	0715 i22	0724 j22	0895 b22	0904 c22	0913 d22	0922 e22	0931 f22	0940 g22	0949 h22	0958 i22	0967 j22	1020 b22	1029 i22	1038 m22	1047 n22		
23	0167 b23	0176 c23	0185 d23	0194 e23	0203 f23	0212 g23	0221 h23	0230 i23	0239 j23	0410 b23	0419 c23	0428 d23	0437 e23	0446 f23	0455 g23	0464 h23	0473 i23	0482 j23	0653 b23	0662 c23	0671 d23	0680 e23	0689 f23	0698 g23	0707 h23	0716 i23	0725 j23	0896 b23	0905 c23	0914 d23	0923 e23	0932 f23	0941 g23	0950 h23	0959 i23	0968 j23	1021 b23	1030 i23	1039 m23	1048 n23		
24	0168 b24	0177 c24	0186 d24	0195 e24	0204 f24	0213 g24	0222 h24	0231 i24	0240 j24	0411 b24	0420 c24	0429 d24	0438 e24	0447 f24	0456 g24	0465 h24	0474 i24	0483 j24	0654 b24	0663 c24	0672 d24	0681 e24	0690 f24	0699 g24	0708 h24	0717 i24	0726 j24	0897 b24	0906 c24	0915 d24	0924 e24	0933 f24	0942 g24	0951 h24	0960 i24	0969 j24	1022 b24	1031 i24	1040 m24	1049 n24		
25	0169 b25	0178 c25	0187 d25	0196 e25	0205 f25	0214 g25	0223 h25	0232 i25	0241 j25	0412 b25	0421 c25	0430 d25	0439 e25	0448 f25	0457 g25	0466 h25</																										

see similar files of the whole serie: <http://farbe.li.tu-berlin.de/feis.htm>
 technical information: <http://farbe.li.tu-berlin.de/A/33872E.htm>
 or <http://standards.iso.org/iso/9241/306/ed-2/index.html>

TUB registration: 20240301-fei5/fei510fa.txt /.ps
 application for evaluation and measurement of display or print output
 TUB material: code=rh4ta

i	LAB*ref	l*out	LAB*out	LAB*out/c-ref	ΔE*
1	0.0	0.0	0.0	0.0	0.01
2	6.36	0.0	0.07	6.36	0.01
3	12.72	0.0	0.13	12.72	0.01
4	19.08	0.0	0.2	19.08	0.01
5	25.44	0.0	0.27	25.44	0.01
6	31.8	0.0	0.33	31.8	0.01
7	38.16	0.0	0.4	38.16	0.01
8	44.52	0.0	0.47	44.52	0.01
9	50.89	0.0	0.53	50.89	0.01
10	57.25	0.0	0.6	57.25	0.01
11	63.61	0.0	0.67	63.61	0.01
12	69.97	0.0	0.73	69.97	0.01
13	76.33	0.0	0.8	76.33	0.01
14	82.69	0.0	0.87	82.69	0.01
15	89.05	0.0	0.93	89.05	0.01
16	95.41	0.0	1.0	95.41	0.01
17	0.0	0.0	0.0	0.0	0.01
18	23.85	0.0	0.25	23.85	0.01
19	47.71	0.0	0.5	47.71	0.01
20	71.56	0.0	0.75	71.56	0.01
21	95.41	0.0	1.0	95.41	0.01

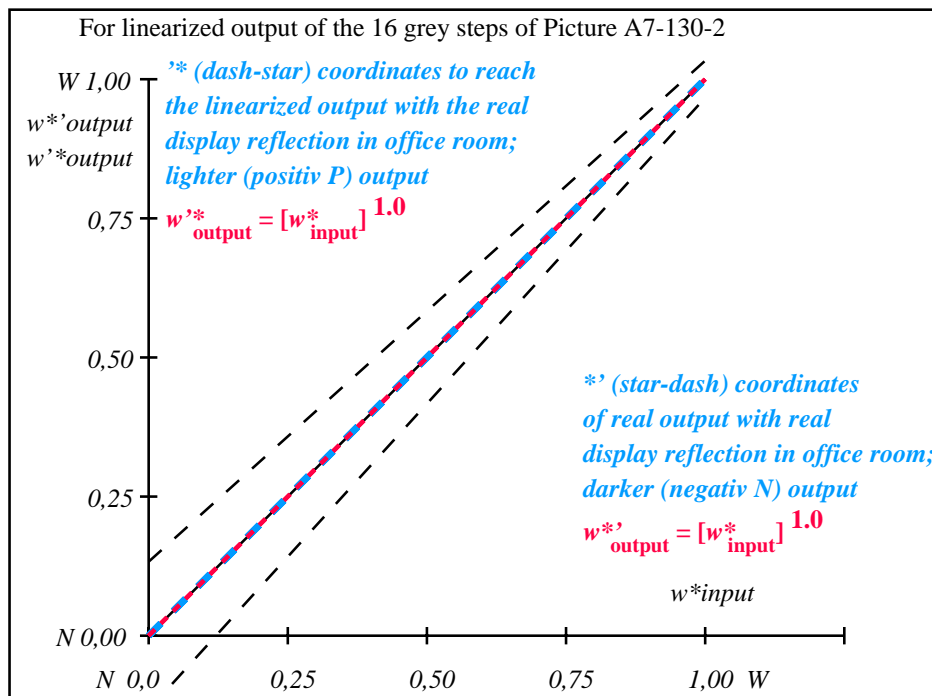
Start output S1
Specification according to ISO/IEC 15775 Annex G and DIN 33866-1 Annex G

Mean lightness difference (16 steps)
 $\Delta E^*_{CIELAB} = 0.0$

Mean lightness difference (5 steps)
 $\Delta L^*_{CIELAB} = 0.0$

Mean colour reproduction index: $R^*_{ab,m} = 100$

fei50-3n-130-2: File: Measure unknown; Device: Device unknown; Date: Date unknown



fei51-3n-130-2: File: Measure unknown; Device: Device unknown; Date: Date unknown

$L^*/Y_{intended}$ (absolute)	0.0/0.0	6.3/0.7	12.7/1.5	19.0/2.7	25.4/4.5	31.8/6.9	38.1/10.1	44.5/14.2	50.8/19.1	57.2/25.1	63.6/32.3	69.9/40.7	76.3/50.4	82.6/61.5	89.0/74.2	95.4/88.5
$w^* w^* w^*$ setrgb																
gp=1.0																
No. and Hex code	00;F	01;E	02;D	03;C	04;B	05;A	06;9	07;8	08;7	09;6	10;5	11;4	12;3	13;2	14;1	15;0
$w^* = l^*_{CIELAB, r}$ (relative)																
$w^*_{intended}$	0,000	0,067	0,133	0,200	0,267	0,333	0,400	0,467	0,533	0,600	0,667	0,733	0,800	0,867	0,933	1,000
w^*_{out}	0.0	0.067	0.133	0.2	0.267	0.333	0.4	0.467	0.533	0.6	0.667	0.733	0.8	0.867	0.933	1.0

OE740-7n, Picture A7-130-2: 16 visual equidistant L^* -grey steps; PS operator: $w^* w^* w^*$ setrgbcolor

TUB-test chart fei5; In-output relation according to ISO 9241-306; 1MR, DEH
 Viewing Y contrast $Y_W:Y_N=88,9:0,31$; Y_N range 0,0 to <0,46

000n/w/cmy0/rgb
 ->rgb*_de, 130-2: