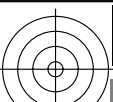
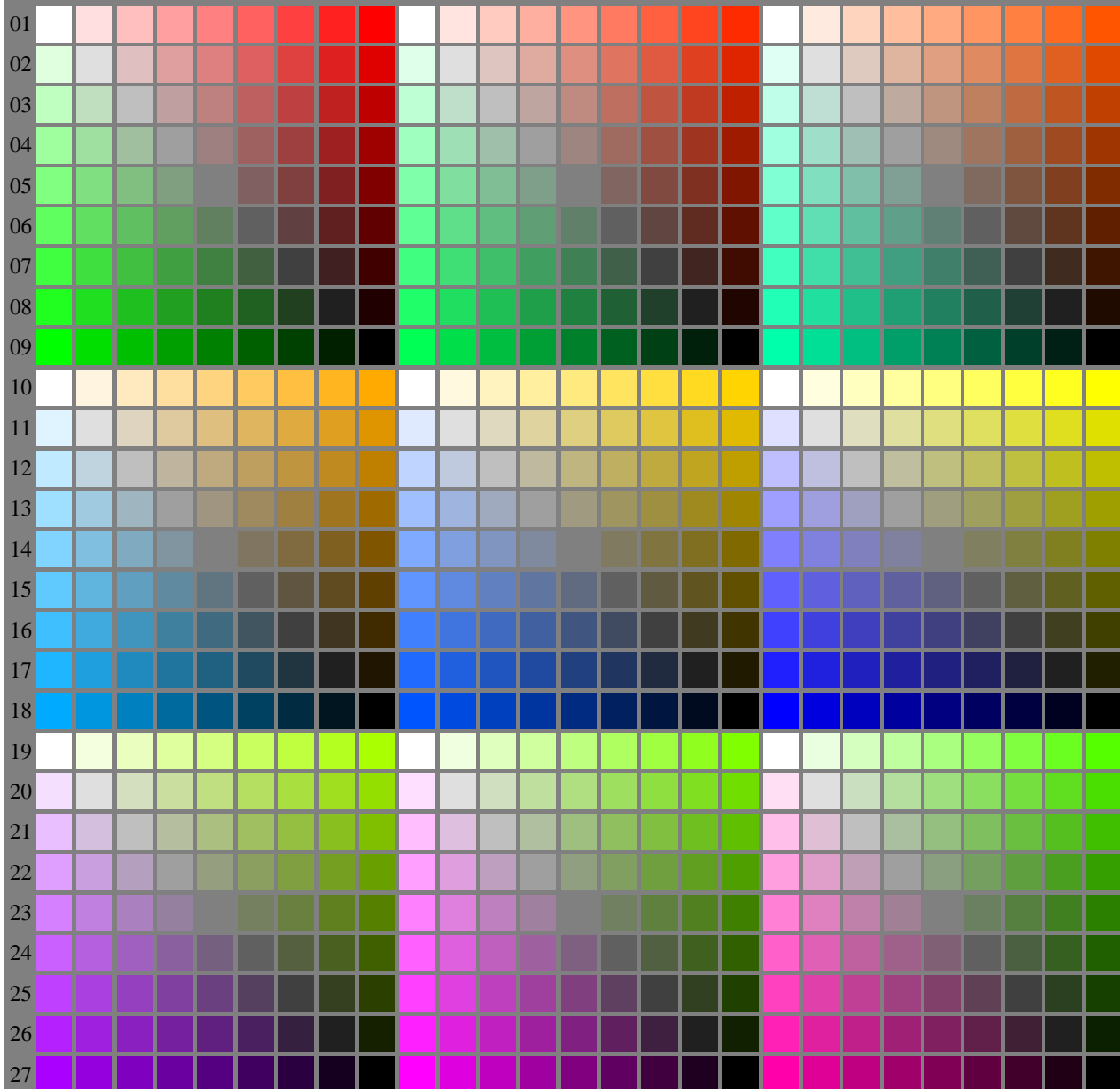


<http://farbe.li.tu-berlin.de/fei4/fei410fa.txt> /.ps; only vector graphic VG; start output
see separate images of this page: <http://farbe.li.tu-berlin.de/fei4/fei4.htm>



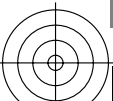
A B C D E F G H I J K L M N O P Q R S T U V W X Y Z a b c d e f g h i j k l m n



see similar files of the whole serie: <http://farbe.li.tu-berlin.de/feis.htm>
technical information: <http://farbe.li.tu-berlin.de/A/33872E.html>
or <http://standards.iso.org/iso/9241/306/ed-2/index.html>

TUB registration: 20240301-fei4/fei410fa.txt /.ps
application for evaluation and measurement of display or print output
TUB material: code=rh4ta

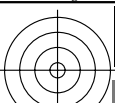
fei40-7N, Page 1/16, Test chart 2E with 40x27=1080 colours; digital equidistant 9 or 16 step colour scales; Colour data in column (A-n): rgb^*_{d} (A_n), colorm = 1, xchart = 0, pchart = 0



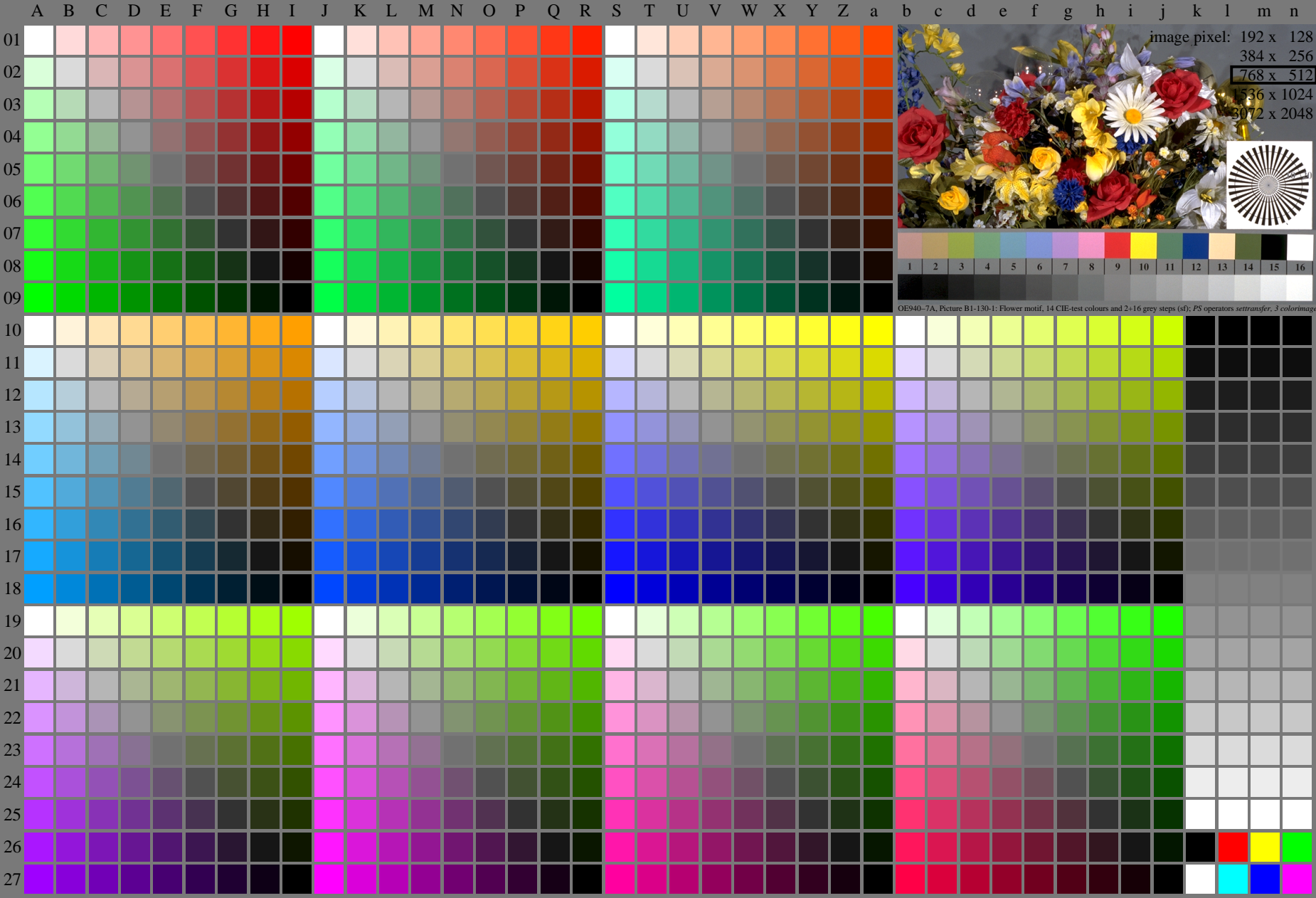
TUB-test chart fei4; Test chart 2e_di with 40x27=1080 colours; 1MR, DH
Digital equidistant 9 or 16 step colour scales

000n/w/cmy0/rgb
-> rgb^*_{d} , 130-0:

<http://farbe.li.tu-berlin.de/fei4/fei410fa.txt> /.ps; only vector graphic VG;
see separate images of this page: <http://farbe.li.tu-berlin.de/fei4/fei4.htm>



see similar files of the whole serie: <http://farbe.li.tu-berlin.de/feis.htm>
technical information: <http://farbe.li.tu-berlin.de/A/33872E.html>
or <http://standards.iso.org/iso/9241/306/ed-2/index.html>



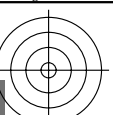
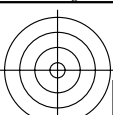
TUB registration: 20240301-fei4/fei410fa.txt /.ps
application for evaluation and measurement of display or print output
TUB material: code=rh4ta

fei40-7N, Page 1/16, Test chart 2E with 40x27=1080 colours; digital equidistant 9 or 16 step colour scales; Colour data in column (A-n): $rgb^*_d(A_n)$, $color_m = 1$, $xchart = 8$, $pchart = 0$

TUB-test chart fei4; Test chart 2e_di with 40x27=1080 colours; 1MR, DH
Digital equidistant 9 or 16 step colour scales

000n/w/cmy0/rgb
-> $rgb^*_d, 130-0$:

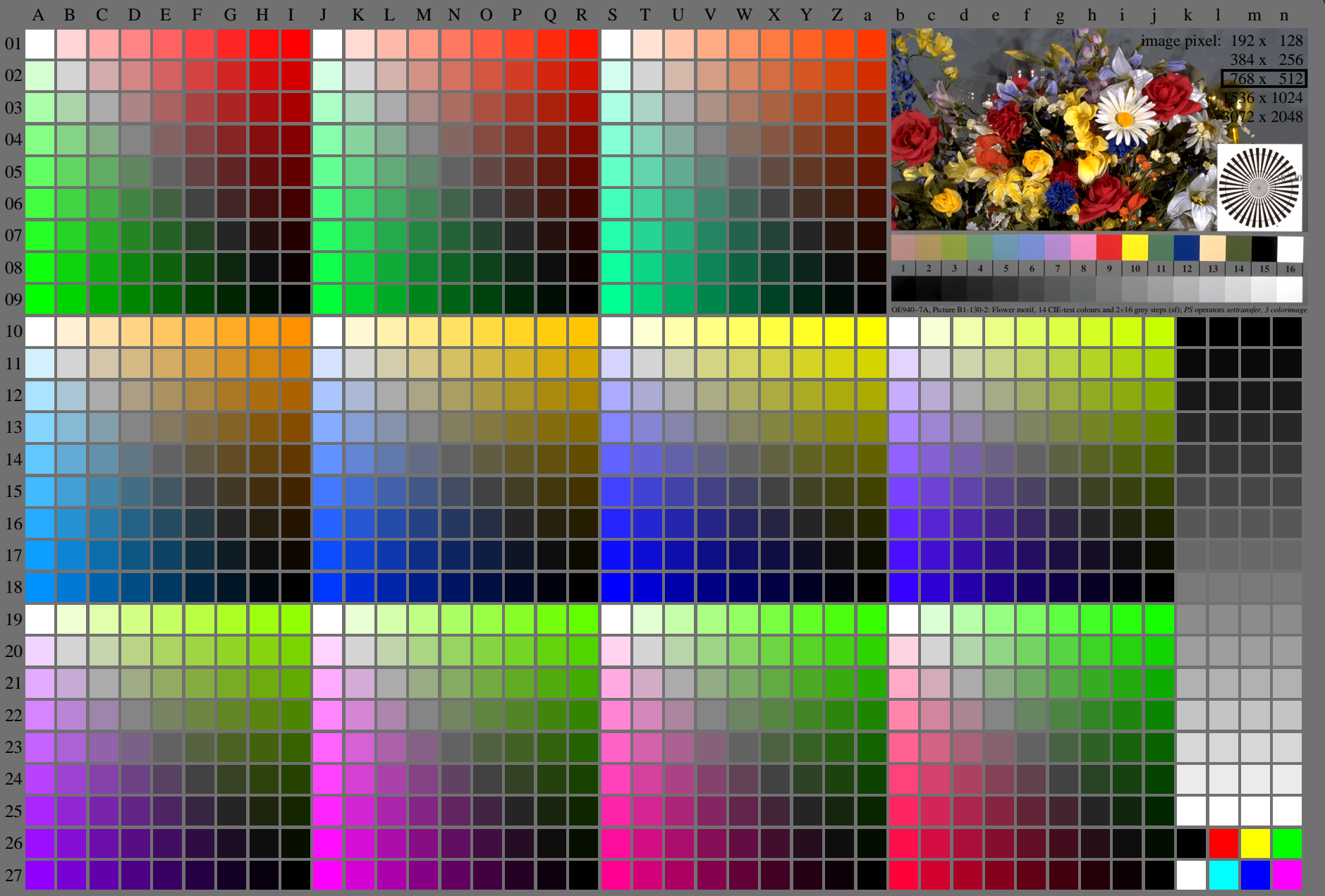
<http://farbe.li.tu-berlin.de/fei4/fei410fa.txt> /.ps; only vector graphic VG;
see separate images of this page: <http://farbe.li.tu-berlin.de/fei4/fei4.htm>



see similar files of the whole serie: <http://farbe.li.tu-berlin.de/feis.htm>
technical information: <http://farbe.li.tu-berlin.de/A/33872E.html>
or <http://standards.iso.org/iso/9241/306/ed-2/index.html>

TUB registration: 20240301-fei4/fei410fa.txt /.ps
application for evaluation and measurement of display or print output

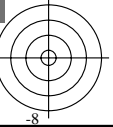
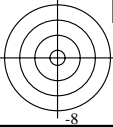
TUB material: code=rh4ta



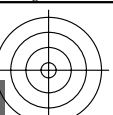
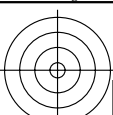
fei40-7N, Page 1/16, Test chart 2E with 40x27=1080 colours; digital equidistant 9 or 16 step colour scales; Colour data in column (A-n): $rgb^*_{d,130-0}$ (A_n), colormap = 1, xchart = 16, pchart = 0

TUB-test chart fei4; Test chart 2e_di with 40x27=1080 colours; 1MR, DH
Digital equidistant 9 or 16 step colour scales

000n/w/cmy0/rgb
-> $rgb^*_{d,130-0}$

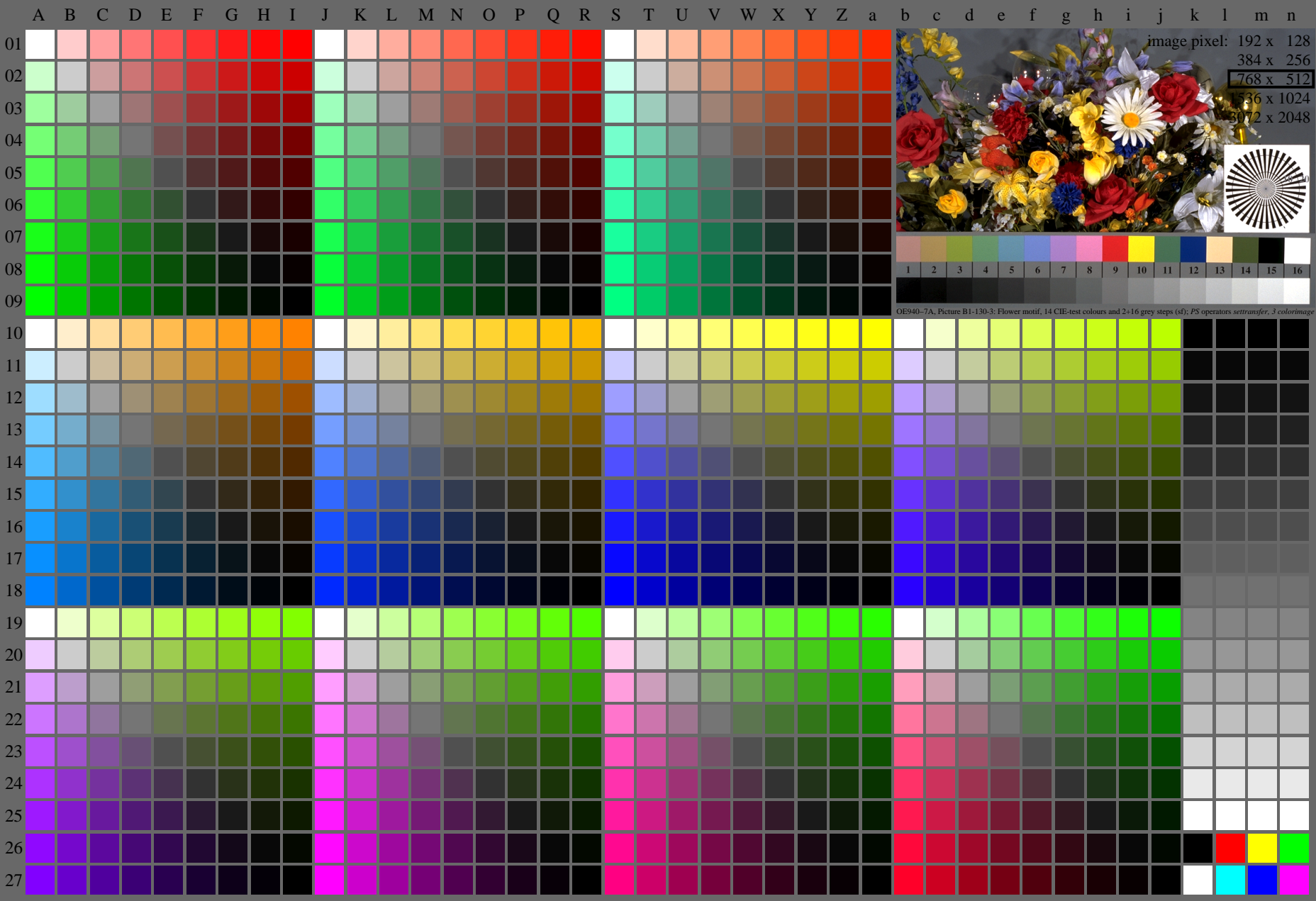


<http://farbe.li.tu-berlin.de/fei4/fei410fa.txt> /.ps; only vector graphic VG;
see separate images of this page: <http://farbe.li.tu-berlin.de/fei4/fei4.htm>



see similar files of the whole serie: <http://farbe.li.tu-berlin.de/feis.htm>
technical information: <http://farbe.li.tu-berlin.de/A/33872E.html>
or <http://standards.iso.org/iso/9241/306/ed-2/index.html>

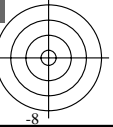
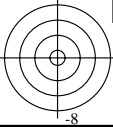
TUB registration: 20240301-fei4/fei410fa.txt /.ps
application for evaluation and measurement of display or print output
TUB material: code=rh4ta



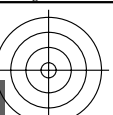
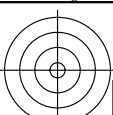
fei40-7N, Page 1/16, Test chart 2E with 40x27=1080 colours; digital equidistant 9 or 16 step colour scales; Colour data in column (A-n): $rgb^*_d(A_n)$, $color_m = 1$, $xchart = 24$, $pchart = 0$

TUB-test chart fei4; Test chart 2e_di with 40x27=1080 colours; 1MR, DH
Digital equidistant 9 or 16 step colour scales

000n/w/cmy0/rgb
->rgb*_d, 130-0:

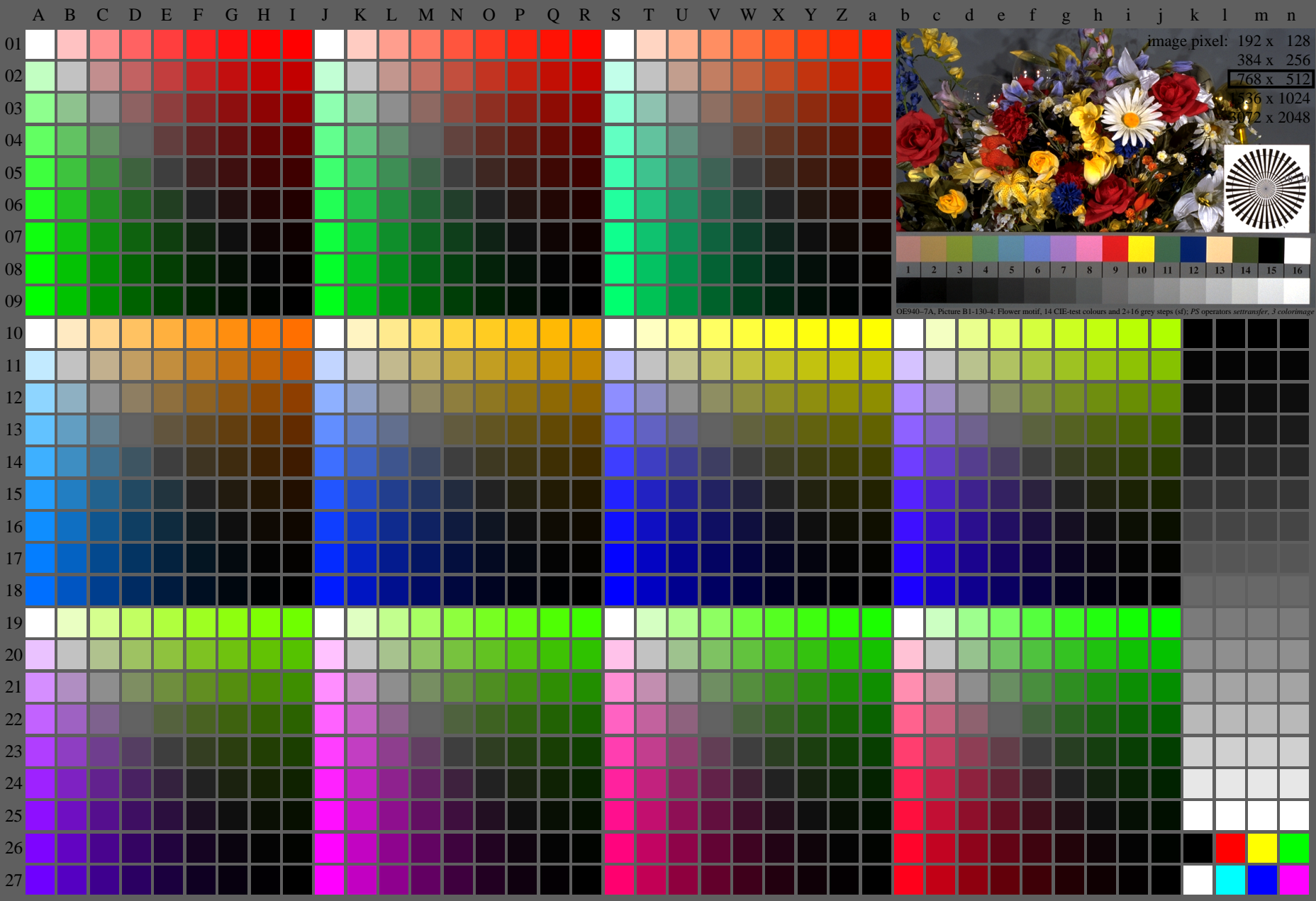


<http://farbe.li.tu-berlin.de/fei4/fei410fa.txt> /.ps; only vector graphic VG;
see separate images of this page: <http://farbe.li.tu-berlin.de/fei4/fei4.htm>



see similar files of the whole serie: <http://farbe.li.tu-berlin.de/feis.htm>
technical information: <http://farbe.li.tu-berlin.de/A/33872E.html>
or <http://standards.iso.org/iso/9241/306/ed-2/index.html>

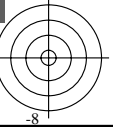
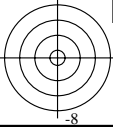
TUB registration: 20240301-fei4/fei410fa.txt /.ps
application for evaluation and measurement of display or print output
TUB material: code=rh4ta



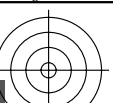
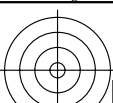
fei40-7N, Page 1/16, Test chart 2E with 40x27=1080 colours; digital equidistant 9 or 16 step colour scales; Colour data in column (A-n): $rgb^*_d(A_n)$, $color_m = 1$, $xchart = 32$, $pchart = 0$

TUB-test chart fei4; Test chart 2e_di with 40x27=1080 colours; 1MR, DH
Digital equidistant 9 or 16 step colour scales

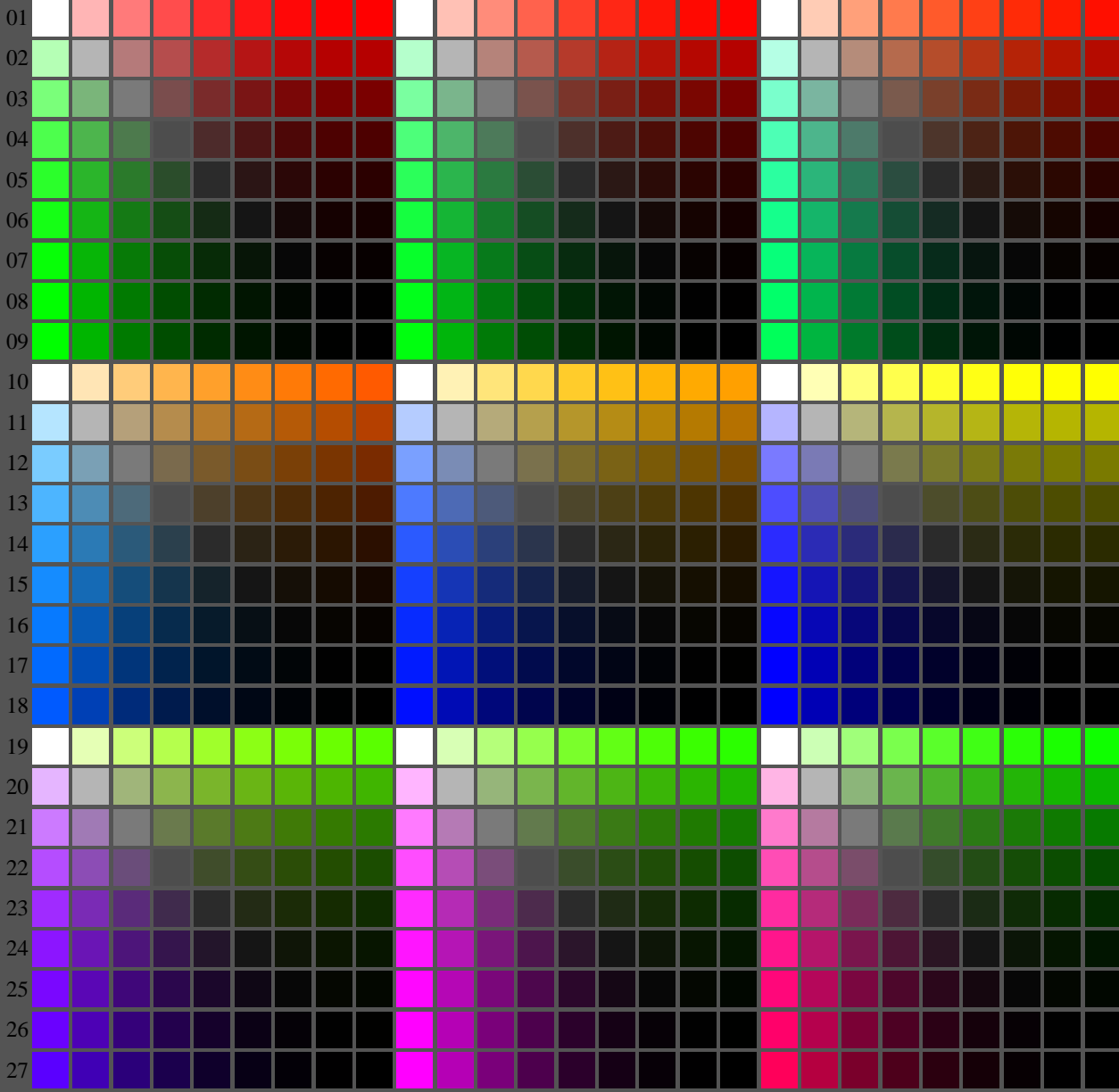
000n/w/cmy0/rgb
->rgb*_d, 130-0:



<http://farbe.li.tu-berlin.de/fei4/fei410fa.txt> /.ps; only vector graphic VG;
see separate images of this page: <http://farbe.li.tu-berlin.de/fei4/fei4.htm>



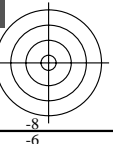
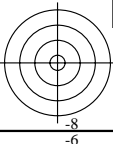
A B C D E F G H I J K L M N O P Q R S T U V W X Y Z a b c d e f g h i j k l m n



see similar files of the whole serie: <http://farbe.li.tu-berlin.de/feis.htm>
technical information: <http://farbe.li.tu-berlin.de/A/33872E.html>
or <http://standards.iso.org/iso/9241/306/ed-2/index.html>

TUB registration: 20240301-fei4/fei410fa.txt /.ps
application for evaluation and measurement of display or print output
TUB material: code=rh4ta

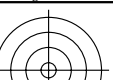
fei40-7N, Page 1/16, Test chart 2E with 40x27=1080 colours; digital equidistant 9 or 16 step colour scales; Colour data in column (A-n): $rgb^*_d(A_n)$, $color_m = 1$, $xchart = 40$, $pchart = 0$



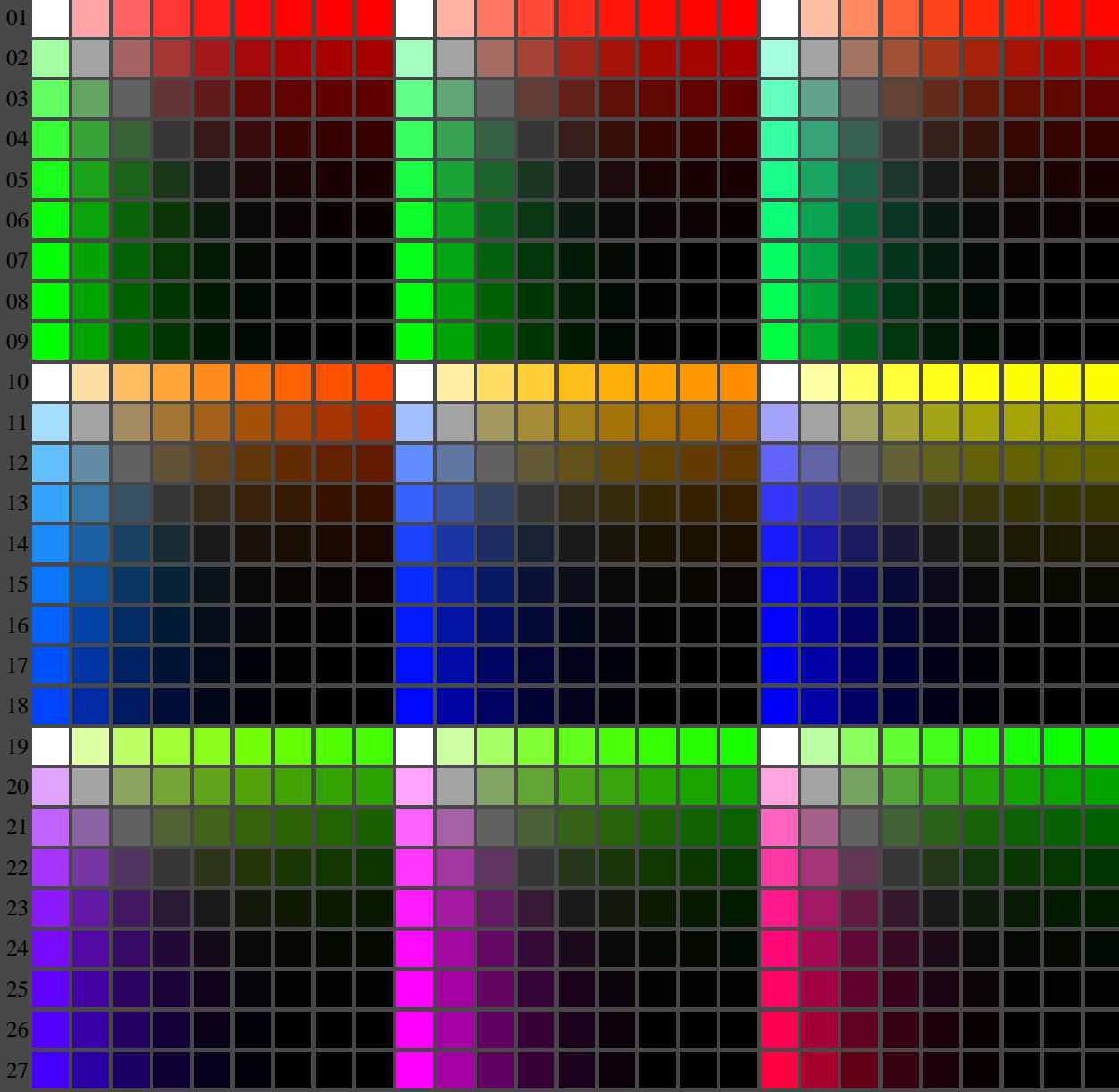
TUB-test chart fei4; Test chart 2e_di with 40x27=1080 colours; 1MR, DH
Digital equidistant 9 or 16 step colour scales

000n/w/cmy0/rgb
-> $rgb^*_d, 130-0$:

<http://farbe.li.tu-berlin.de/fei4/fei410fa.txt> /.ps; only vector graphic VG;
see separate images of this page: <http://farbe.li.tu-berlin.de/fei4/fei4.htm>



A B C D E F G H I J K L M N O P Q R S T U V W X Y Z a b c d e f g h i j k l m n



see similar files of the whole serie: <http://farbe.li.tu-berlin.de/feis.htm>
technical information: <http://farbe.li.tu-berlin.de/A/33872E.html>
or <http://standards.iso.org/iso/9241/306/ed-2/index.html>

TUB registration: 20240301-fei4/fei410fa.txt /.ps
application for evaluation and measurement of display or print output
TUB material: code=rh4ta

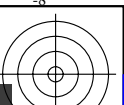
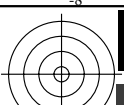
fei40-7N, Page 1/16, Test chart 2E with 40x27=1080 colours; digital equidistant 9 or 16 step colour scales; Colour data in column (A-n): $rgb^*_{A_n}$, $colorm = 1$, $xchart = 48$, $pchart = 0$

TUB-test chart fei4; Test chart 2e_di with 40x27=1080 colours; 1MR, DH
Digital equidistant 9 or 16 step colour scales

000n/w/cmy0/rgb
-> rgb^*_d , 130-0:



<http://farbe.li.tu-berlin.de/fei4/fei410fa.txt> /.ps; only vector graphic VG;
see separate images of this page: <http://farbe.li.tu-berlin.de/fei4/fei4.htm>



C

M

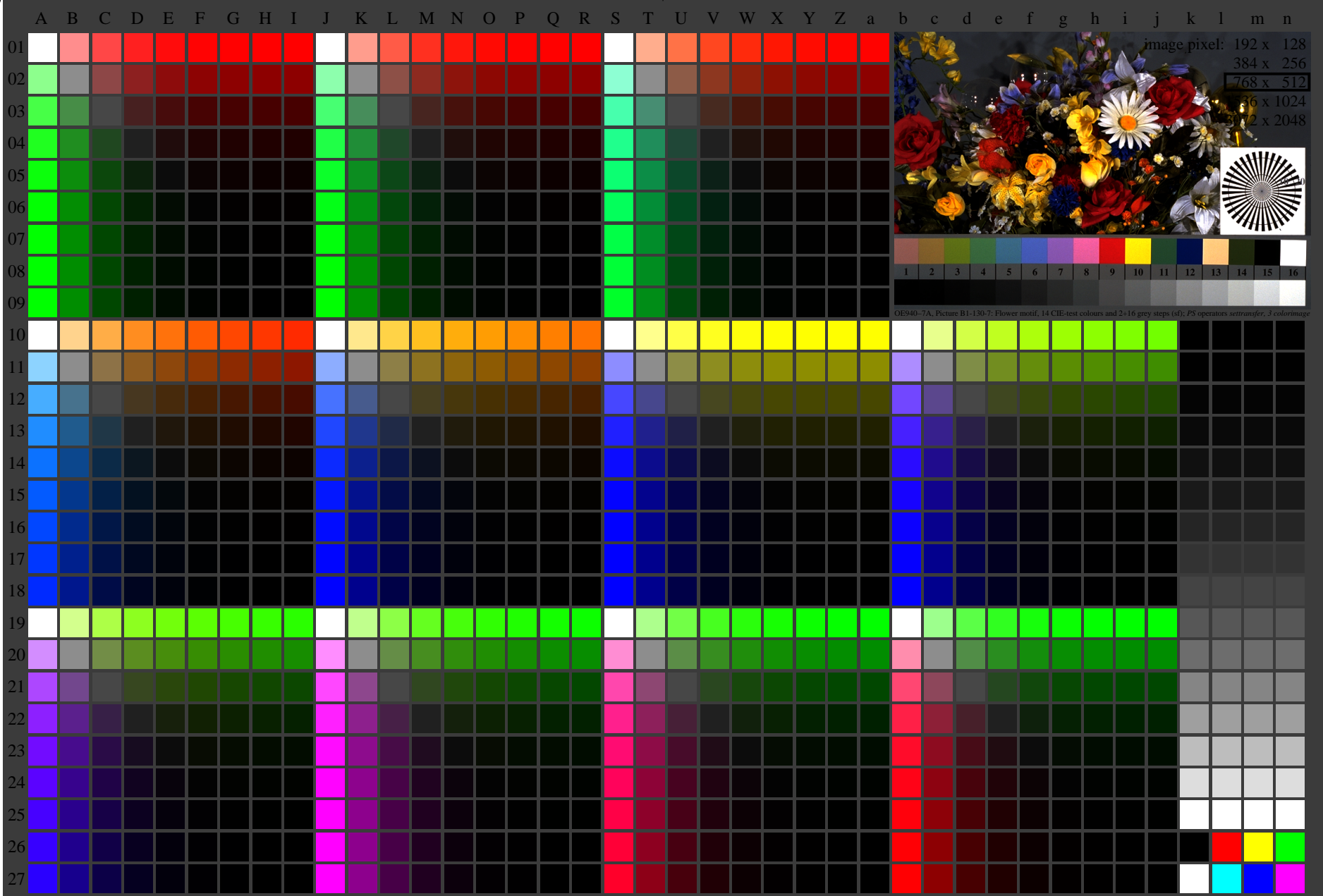
Y

O

L

V

see similar files of the whole serie: <http://farbe.li.tu-berlin.de/feis.htm>
technical information: <http://farbe.li.tu-berlin.de/A/33872E.html>
or <http://standards.iso.org/iso/9241/306/ed-2/index.html>



TUB registration: 20240301-fei4/fei410fa.txt /.ps
application for evaluation and measurement of display or print output
TUB material: code=rh4ta

fei40-7N, Page 1/16, Test chart 2E with 40x27=1080 colours; digital equidistant 9 or 16 step colour scales; Colour data in column (A-n): $rgb^*(A_n)$, $colorm = 1$, $xchart = 56$, $pchart = 0$

TUB-test chart fei4; Test chart 2e_di with 40x27=1080 colours; 1MR, DH
Digital equidistant 9 or 16 step colour scales

000n/w/cmy0/rgb
-> $rgb^*_d, 130-0$:



C M Y O L V