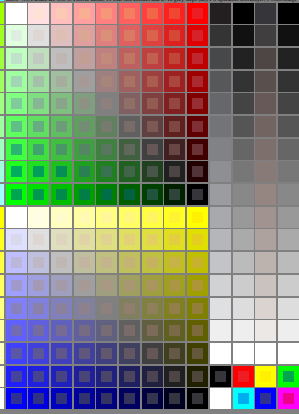
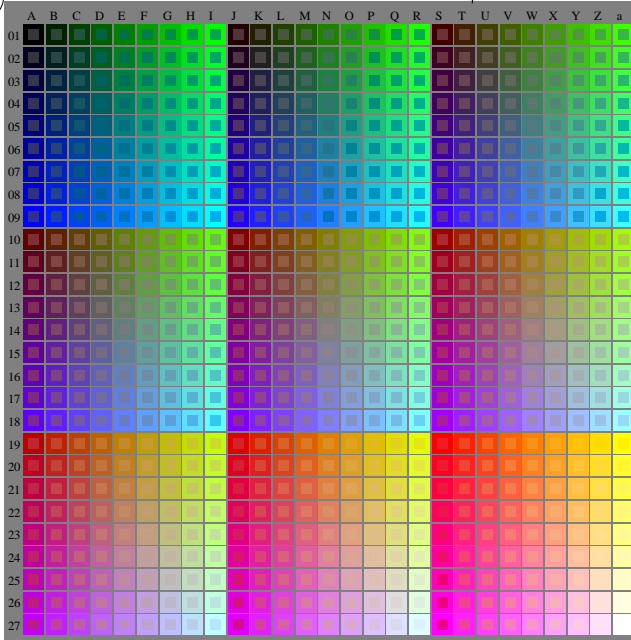


<http://farbe.li.tu-berlin.de/fei3/fei3l0n1.txt/.ps>; only vector graphic VG; start output
see separate images of this page: <http://farbe.li.tu-berlin.de/fei3/fei3.htm>

see similar files of the whole serie: <http://farbe.li.tu-berlin.de/fei3.htm>
technical information: <http://farbe.li.tu-berlin.de/A33872E.html>
or <http://standards.iso.org/iso/9241/306/ed-2/index.html>



fei30-7N, Page 1/16, Test chart 2G with 40x27=1080 colours; digital equidistant 9 or 16 step colour scales; Colour data in column (A-n): rgb + cmy0 (A..j + k26..n27), 000n (k), w (l), nm0 (m), www (n), color0 = 0, xchart = 0, pchart = 0

TUB-test chart fei3; Test chart 2g_di with 40x27=1080 colours; DH
Digital equidistant 9 or 16 step colour scales

000n/w/cmy0/rgb
->rgb*d, 030-0:

TUB registration: 20240301-fei3/fei3l0n1.txt/.ps
application for evaluation and measurement of display or print output
TUB material: code=thadta