

<http://farbe.li.tu-berlin.de/fei3/fei310fa.txt> /ps; only vector graphic VG; start output
see separate images of this page: <http://farbe.li.tu-berlin.de/fei3/fei3.htm>



C

M

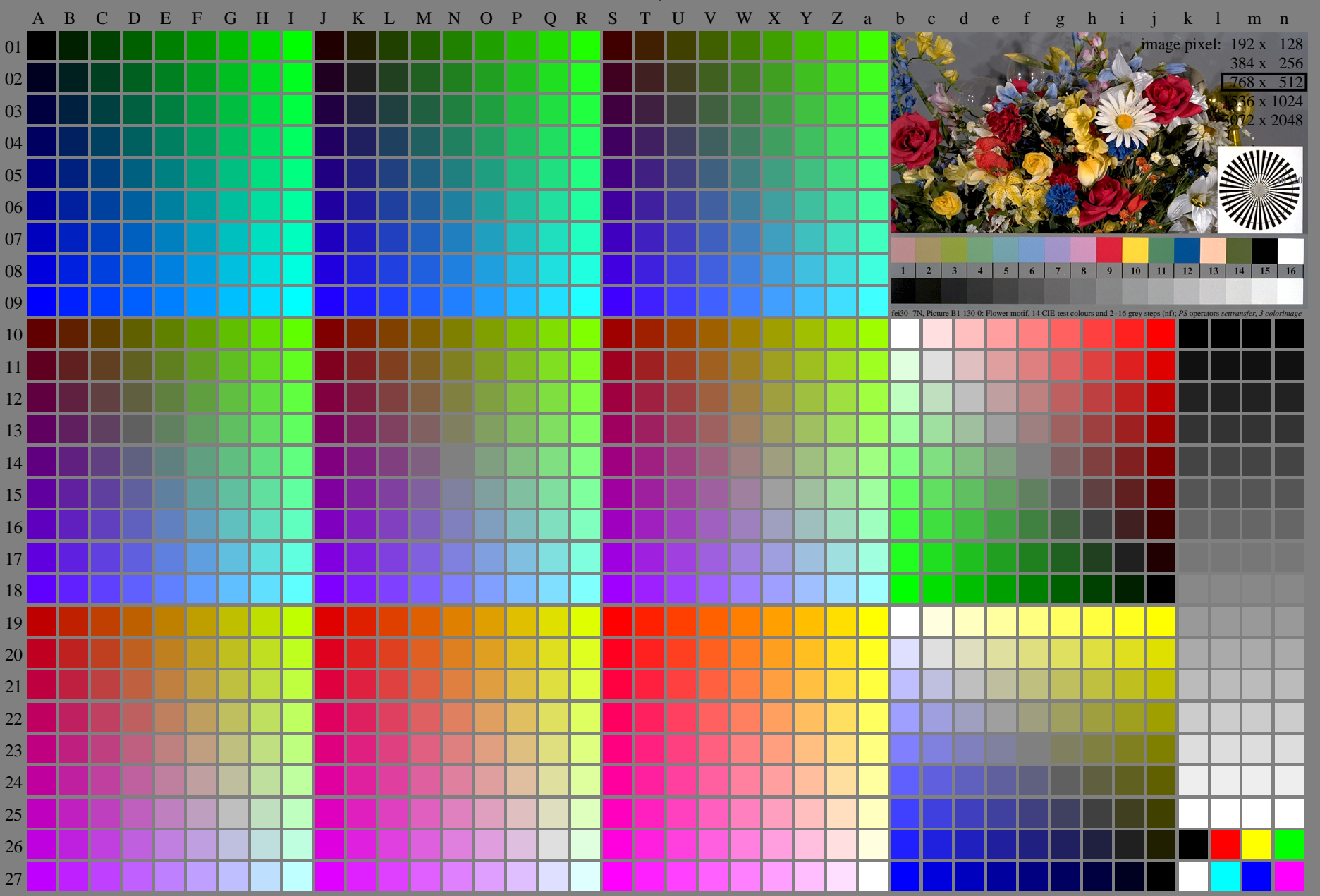
Y

O

L

V

see similar files of the whole serie: <http://farbe.li.tu-berlin.de/feis.htm>
technical information: <http://farbe.li.tu-berlin.de/A/33872E.html>
or <http://standards.iso.org/iso/9241/306/ed-2/index.html>



TUB registration: 20240301-fei3/fei310fa.txt /ps
application for evaluation and measurement of display or print output
TUB material: code=rh4ta

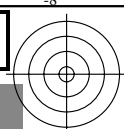
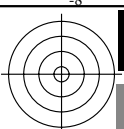
fei30-7N, Page 1/16, Test chart 2G with 40x27=1080 colours; digital equidistant 9 or 16 step colour scales; Colour data in column (A-n): $rgb^*(A_n)$, colorm = 1, xchart = 0, pchart = 0



TUB-test chart fei3; Test chart 2g_di with 40x27=1080 colours; 1MR, DH
Digital equidistant 9 or 16 step colour scales

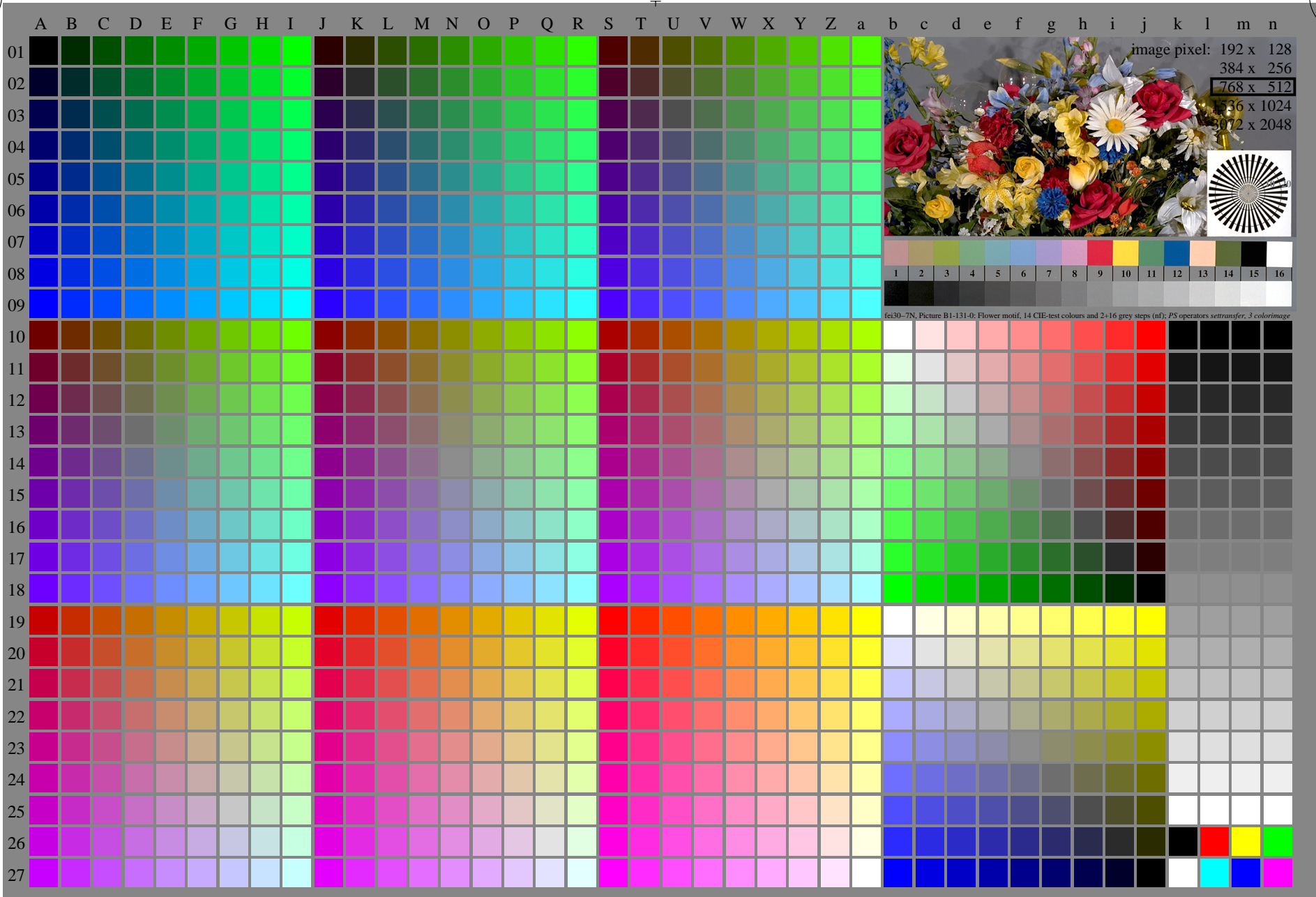
000n/w/cmy0/rgb
->rgb*_d, 130-0:

<http://farbe.li.tu-berlin.de/fei3/fei310fa.txt> /.ps; only vector graphic VG;
see separate images of this page: <http://farbe.li.tu-berlin.de/fei3/fei3.htm>

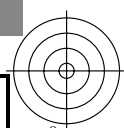
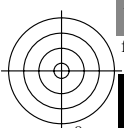


see similar files of the whole serie: <http://farbe.li.tu-berlin.de/feis.htm>
technical information: <http://farbe.li.tu-berlin.de/A/33872E.html>
or <http://standards.iso.org/iso/9241/306/ed-2/index.html>

TUB registration: 20240301-fei3/fei310fa.txt /.ps
application for evaluation and measurement of display or print output



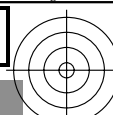
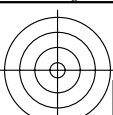
feis30-7N, Page 1/16, Test chart 2G with 40x27=1080 colours; digital equidistant 9 or 16 step colour scales; Colour data in column (A-n): $rgb^* (A_n)$, $colorm = 1$, $xchart = 1$, $pchart = 0$



TUB-test chart fei3; Test chart 2g_di with 40x27=1080 colours; 1MR, DH
Digital equidistant 9 or 16 step colour scales

000n/w/cmy0/rgb
->rgb*_d, 131-0:

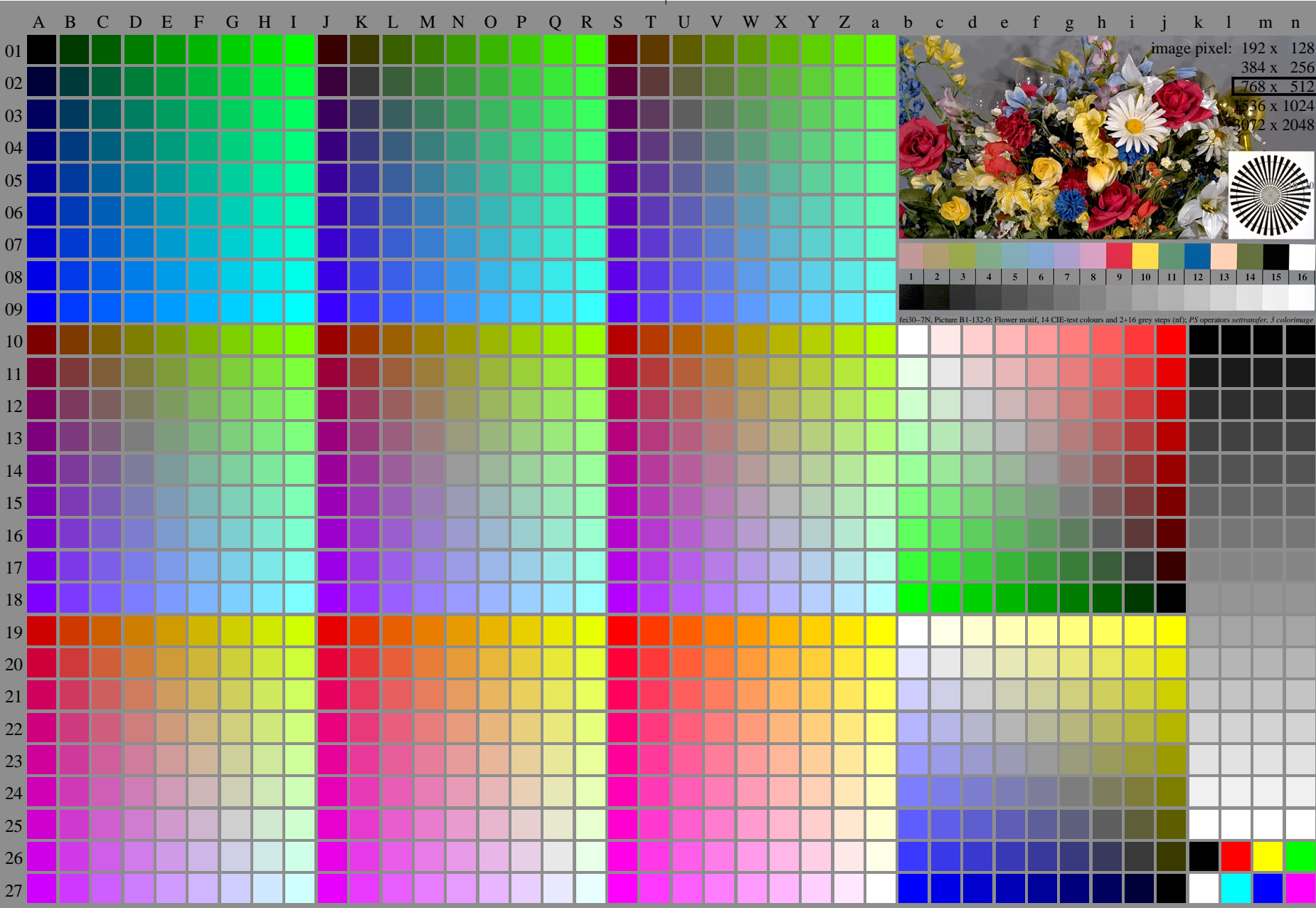
<http://farbe.li.tu-berlin.de/fei3/fei310fa.txt> /.ps; only vector graphic VG;
see separate images of this page: <http://farbe.li.tu-berlin.de/fei3/fei3.htm>



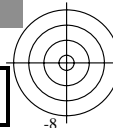
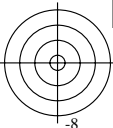
see similar files of the whole series: <http://farbe.li.tu-berlin.de/feis.htm>
technical information: <http://farbe.li.tu-berlin.de/A/33872E.html>
or <http://standards.iso.org/iso/9241/306/ed-2/index.html>

TUB registration: 20240301-fei3/fei310fa.txt /.ps
application for evaluation and measurement of display or print output

TUB material: code=rh4ta



fei30-7N, Page 1/16, Test chart 2G with 40x27=1080 colours; digital equidistant 9 or 16 step colour scales; Colour data in column (A-n): $rgb^*_d(A_n)$, $colorm = 1$, $xchart = 2$, $pchart = 0$

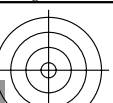
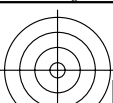


TUB-test chart fei3; Test chart 2g_di with 40x27=1080 colours; 1MR, DH
Digital equidistant 9 or 16 step colour scales

000n/w/cmy0/rgb
→ $rgb^*_d, 132-0$:



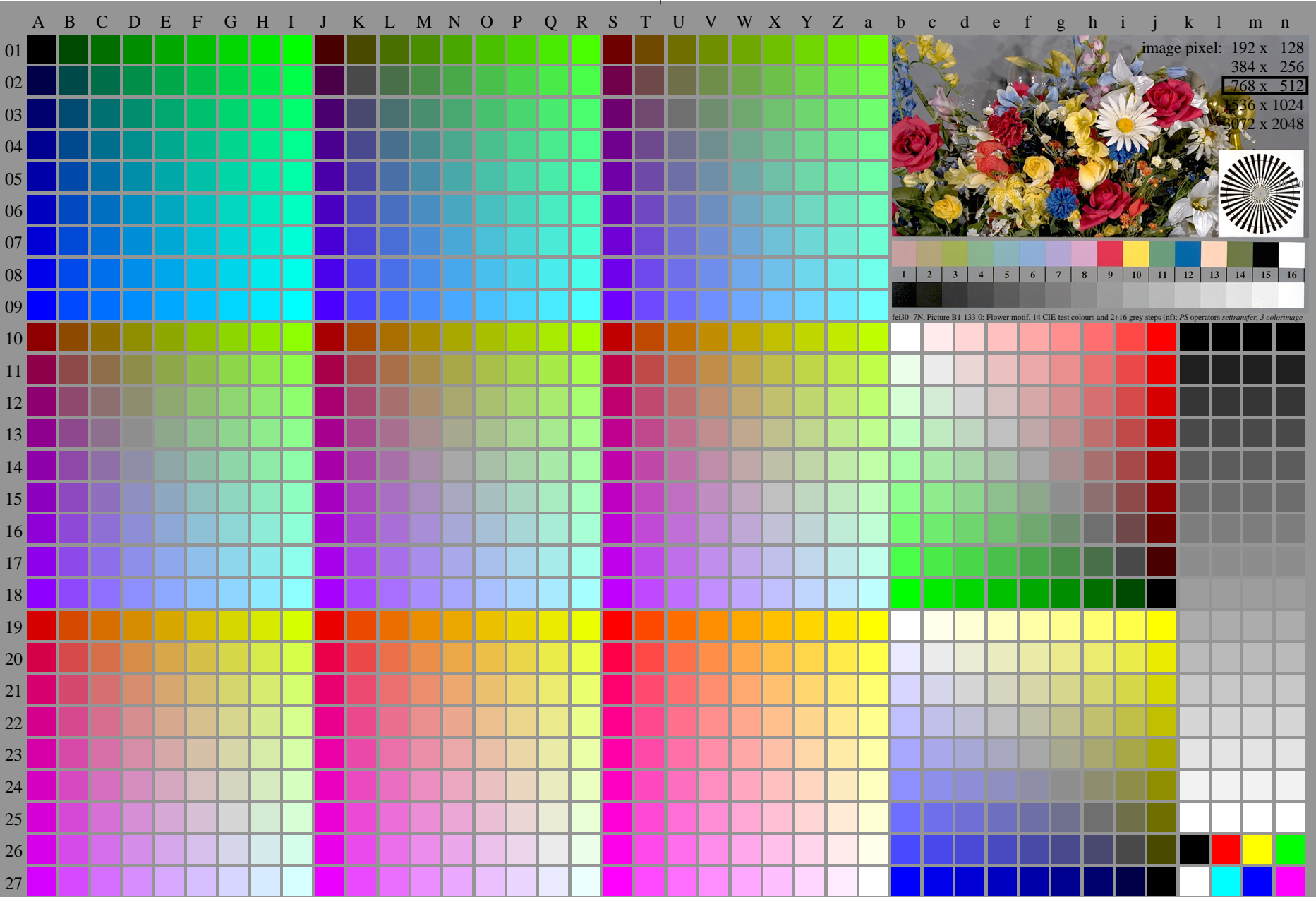
<http://farbe.li.tu-berlin.de/fei3/fei310fa.txt> /.ps; only vector graphic VG;
see separate images of this page: <http://farbe.li.tu-berlin.de/fei3/fei3.htm>



see similar files of the whole serie: <http://farbe.li.tu-berlin.de/feis.htm>
technical information: <http://farbe.li.tu-berlin.de/A/33872E.html>
or <http://standards.iso.org/iso/9241/306/ed-2/index.html>

TUB registration: 20240301-fei3/fei310fa.txt /.ps
application for evaluation and measurement of display or print output

TUB material: code=rh4ta



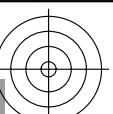
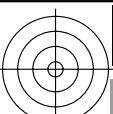
fei30-7N, Page 1/16, Test chart 2G with 40x27=1080 colours; digital equidistant 9 or 16 step colour scales; Colour data in column (A-n): $rgb^*_d(A_n)$, $colorm = 1$, $xchart = 3$, $pchart = 0$



TUB-test chart fei3; Test chart 2g_di with 40x27=1080 colours; 1MR, DH
Digital equidistant 9 or 16 step colour scales

000n/w/cmy0/rgb
-> rgb^*_d , 133-0:

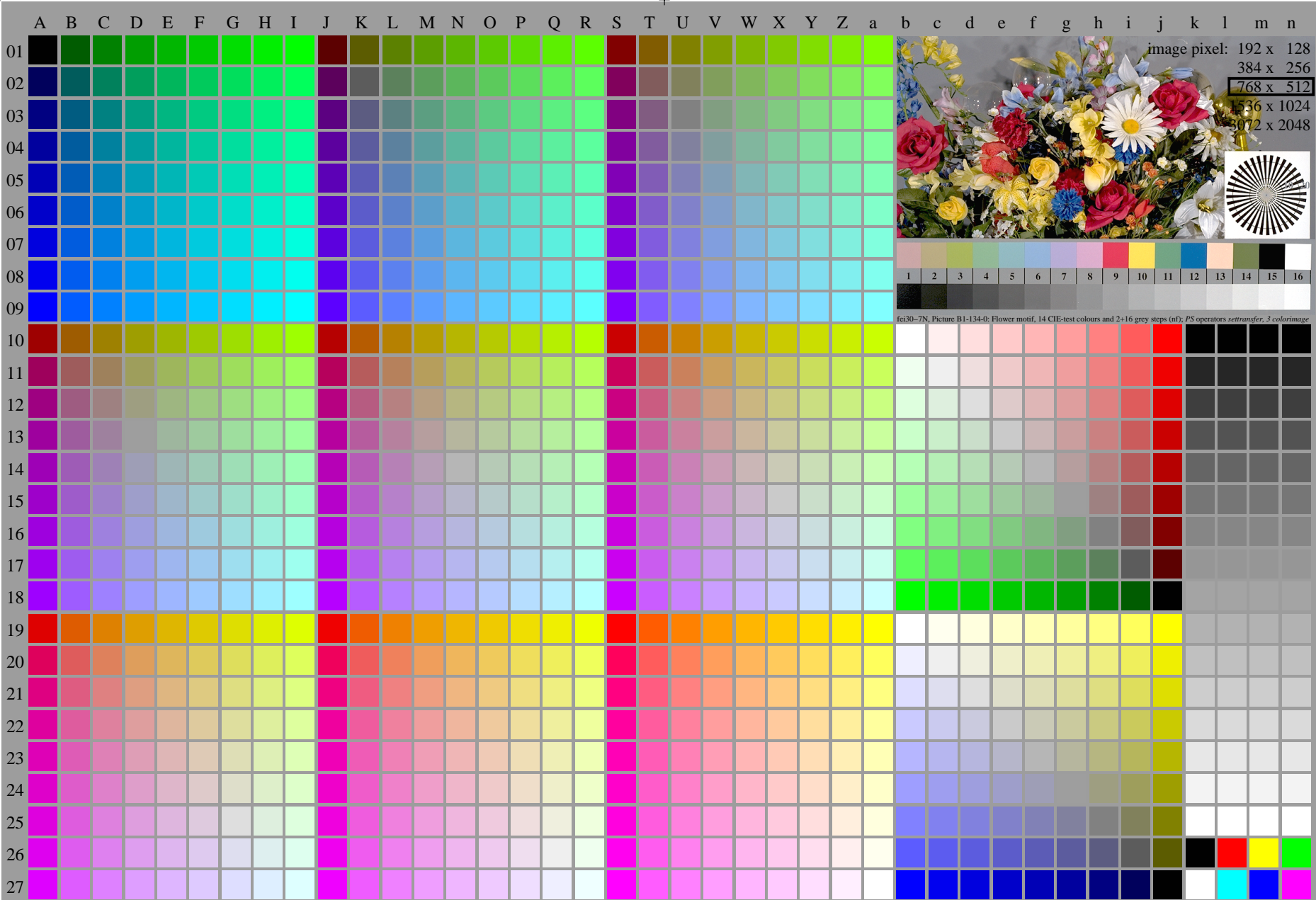
<http://farbe.li.tu-berlin.de/fei3/fei310fa.txt> /.ps; only vector graphic VG;
see separate images of this page: <http://farbe.li.tu-berlin.de/fei3/fei3.htm>



see similar files of the whole series: <http://farbe.li.tu-berlin.de/feis.htm>
technical information: <http://farbe.li.tu-berlin.de/A/33872E.html>
or <http://standards.iso.org/iso/9241/306/ed-2/index.html>

TUB registration: 20240301-fei3/fei310fa.txt /.ps
application for evaluation and measurement of display or print output

TUB material: code=rh4ta



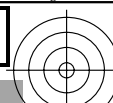
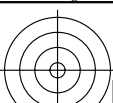
fei30-7N, Page 1/16, Test chart 2G with 40x27=1080 colours; digital equidistant 9 or 16 step colour scales; Colour data in column (A-n): $rgb^*_{d,134-0}$ (A_n), colorm = 1, xchart = 4, pchart = 0

TUB-test chart fei3; Test chart 2g_di with 40x27=1080 colours; 1MR, DH
Digital equidistant 9 or 16 step colour scales

000n/w/cmy0/rgb
-> $rgb^*_{d,134-0}$

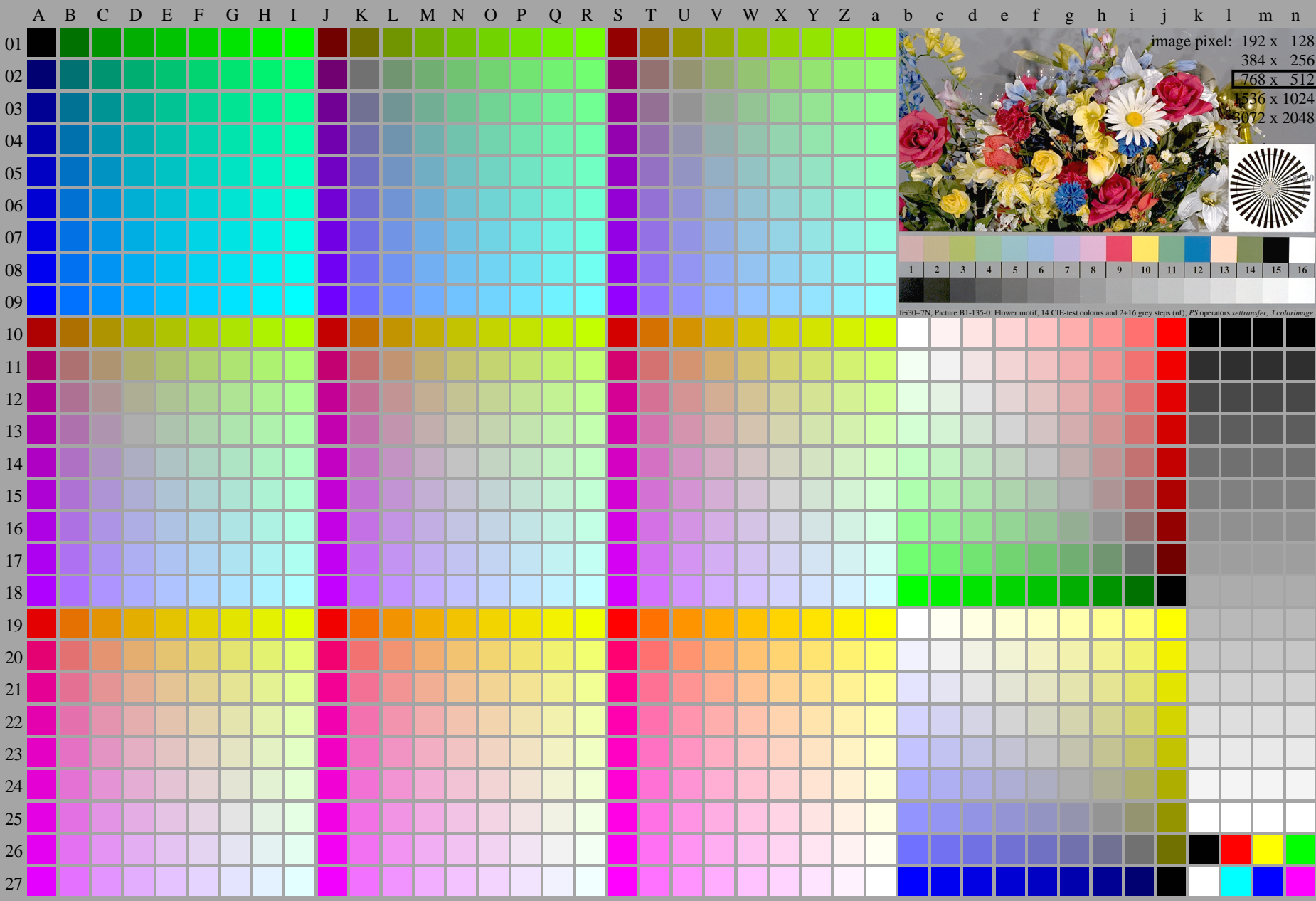


<http://farbe.li.tu-berlin.de/fei3/fei310fa.txt> /.ps; only vector graphic VG;
see separate images of this page: <http://farbe.li.tu-berlin.de/fei3/fei3.htm>



see similar files of the whole serie: <http://farbe.li.tu-berlin.de/feis.htm>
technical information: <http://farbe.li.tu-berlin.de/A/33872E.html>
or <http://standards.iso.org/iso/9241/306/ed-2/index.html>

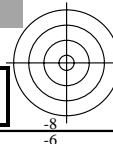
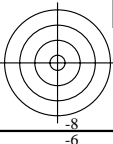
TUB registration: 20240301-fei3/fei310fa.txt /.ps
application for evaluation and measurement of display or print output
TUB material: code=rh4ta



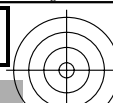
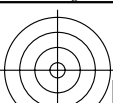
fei30-7N, Page 1/16, Test chart 2G with 40x27=1080 colours; digital equidistant 9 or 16 step colour scales; Colour data in column (A-n): $rgb^*(A_n)$, $colorm = 1$, $xchart = 5$, $pchart = 0$

TUB-test chart fei3; Test chart 2g_di with 40x27=1080 colours; 1MR, DH
Digital equidistant 9 or 16 step colour scales

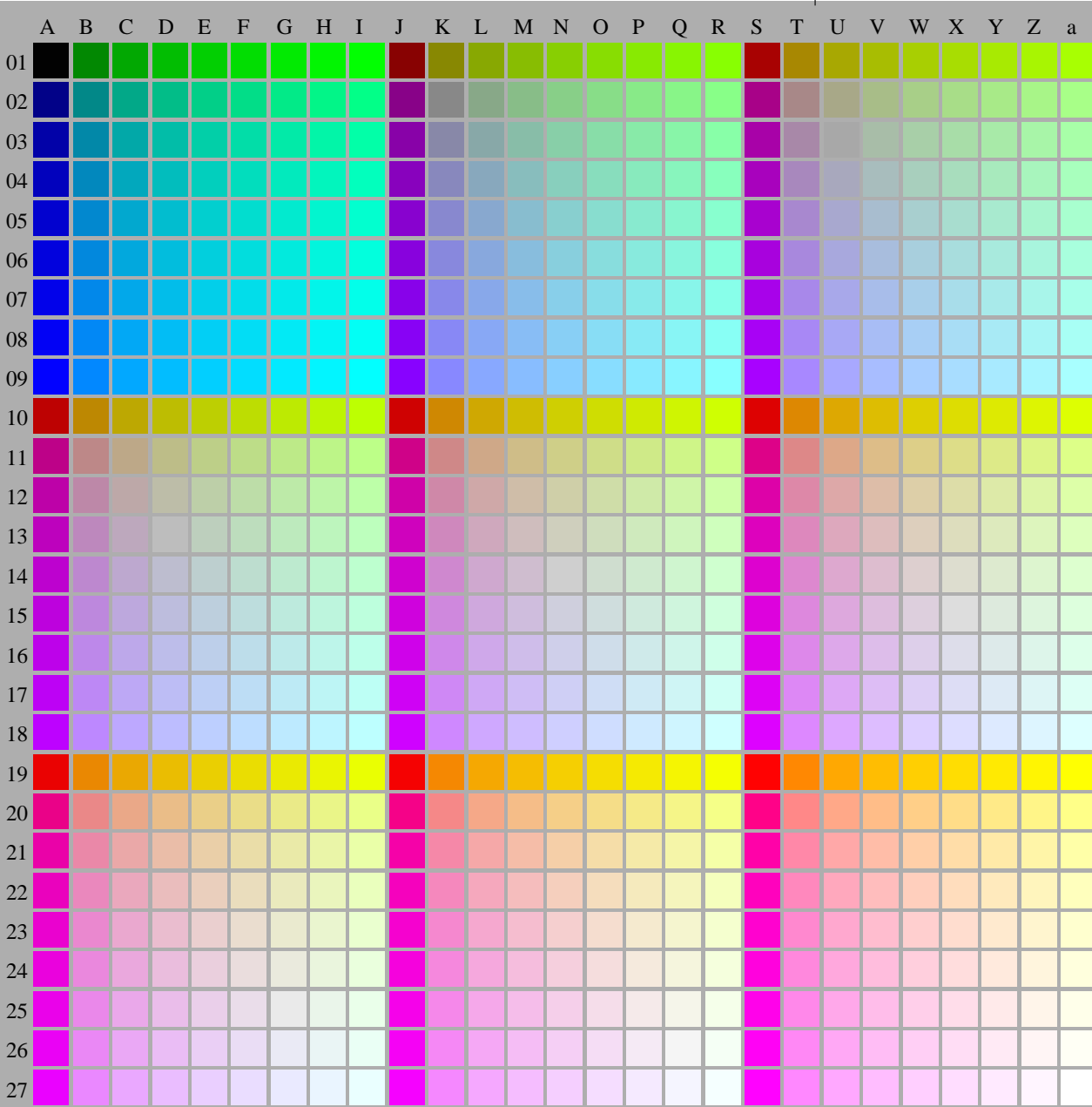
000n/w/cmy0/rgb
->rgb*_d, 135-0:



<http://farbe.li.tu-berlin.de/fei3/fei310fa.txt> /.ps; only vector graphic VG;
see separate images of this page: <http://farbe.li.tu-berlin.de/fei3/fei3.htm>

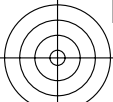


see similar files of the whole serie: <http://farbe.li.tu-berlin.de/feis.htm>
technical information: <http://farbe.li.tu-berlin.de/A/33872E.html>
or <http://standards.iso.org/iso/9241/306/ed-2/index.html>



TUB registration: 20240301-fei3/fei310fa.txt /.ps
application for evaluation and measurement of display or print output

TUB material: code=rh4ta

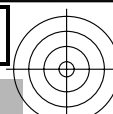


TUB-test chart fei3; Test chart 2g_di with 40x27=1080 colours; 1MR, DH
Digital equidistant 9 or 16 step colour scales

000n/w/cmy0/rgb
->rgb*_d, 136-0:



<http://farbe.li.tu-berlin.de/fei3/fei310fa.txt> /.ps; only vector graphic VG;
see separate images of this page: <http://farbe.li.tu-berlin.de/fei3/fei3.htm>



see similar files of the whole serie: <http://farbe.li.tu-berlin.de/feis.htm>
technical information: <http://farbe.li.tu-berlin.de/A/33872E.html>
or <http://standards.iso.org/iso/9241/306/ed-2/index.html>

TUB registration: 20240301-fei3/fei310fa.txt /.ps
application for evaluation and measurement of display or print output



fei30-7N, Page 1/16, Test chart 2G with 40x27=1080 colours; digital equidistant 9 or 16 step colour scales; Colour data in column (A-n): $rgb^* (A_n)$, $colorm = 1$, $xchart = 7$, $pchart = 0$

TUB-test chart fei3; Test chart 2g_di with 40x27=1080 colours; 1MR, DH
Digital equidistant 9 or 16 step colour scales

000n/w/cmy0/rgb
->rgb*_d, 137-0:

