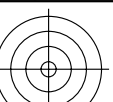
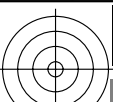


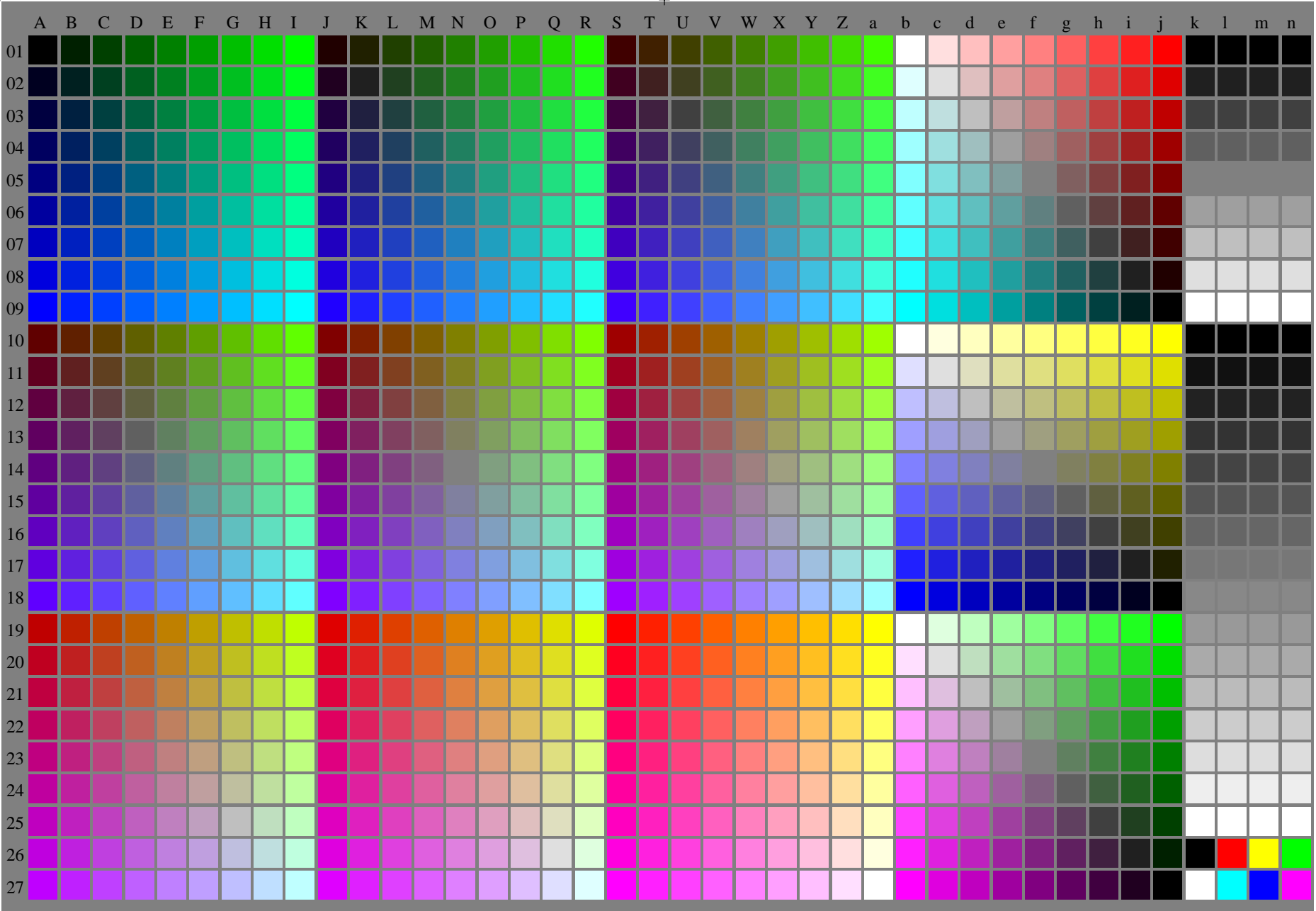
<http://farbe.li.tu-berlin.de/fei0/fei010fa.txt> /.ps; only vector graphic VG; start output
see separate images of this page: <http://farbe.li.tu-berlin.de/fei0/fei0.htm>



see similar files of the whole series: <http://farbe.li.tu-berlin.de/feis.htm>
technical information: <http://farbe.li.tu-berlin.de/A/33872E.html>
or <http://standards.iso.org/iso/9241/306/ed-2/index.html>

TUB registration: 20240301-fei0/fei010fa.txt /.ps
application for evaluation and measurement of display or print output

TUB material: code=rh4ta



fei00-7n-130-0: Test chart 2g with 40x27=1080 colours; digital equidistant 9 or 16 step colour scales; Colour data in column (A-n): $rgb^*(A_n, colorml = 1)$

TUB-test chart fei0; Test chart 2g_d0 with 40x27=1080 colours; 1MR, DH
Digital equidistant 9 or 16 step colour scales

000n/w/cmy0/rgb
->rgb*_d, 130-0:



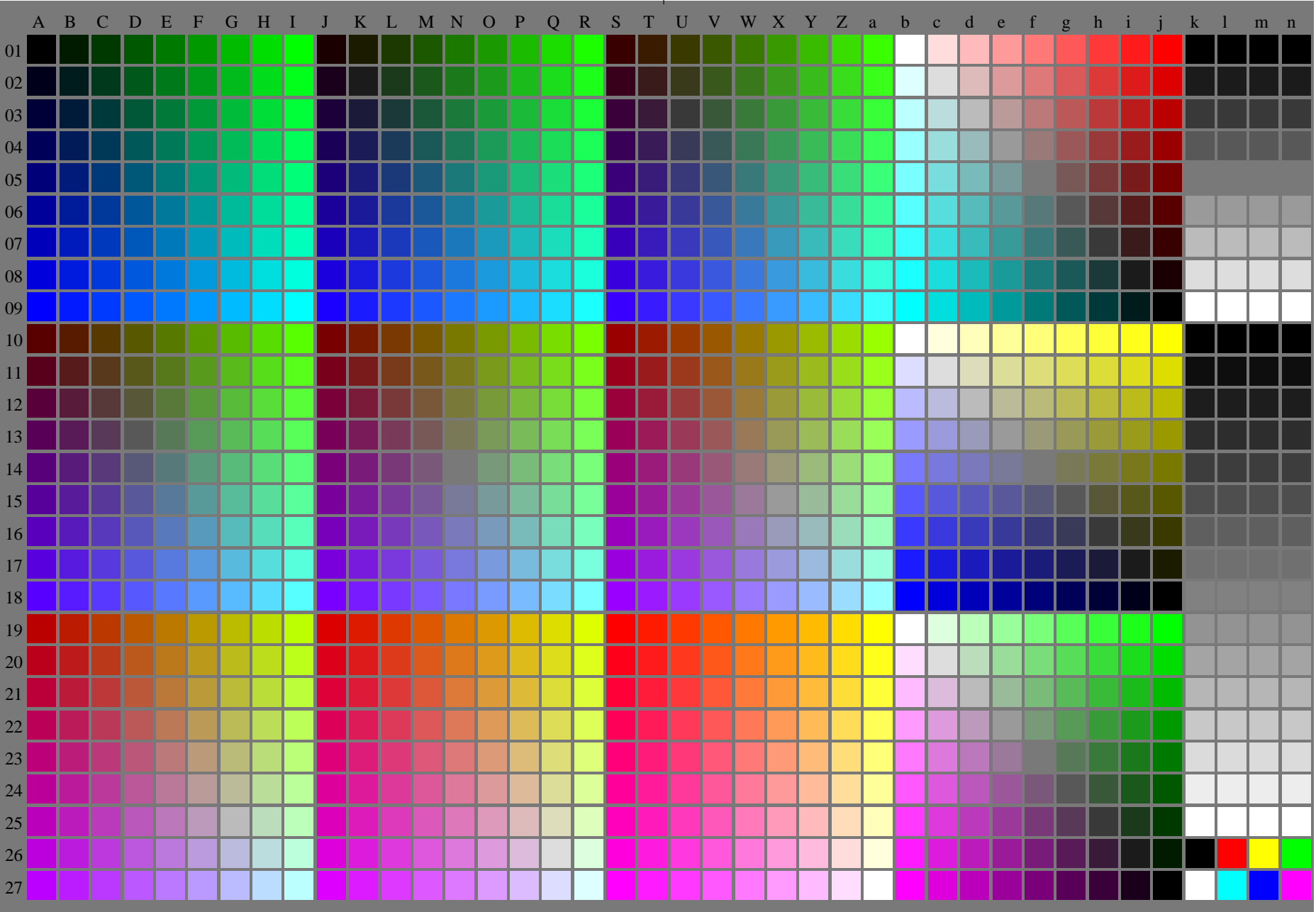
<http://farbe.li.tu-berlin.de/fei0/fei010fa.txt> /.ps; only vector graphic VG;
see separate images of this page: <http://farbe.li.tu-berlin.de/fei0/fei0.htm>



see similar files of the whole series: <http://farbe.li.tu-berlin.de/feis.htm>
technical information: <http://farbe.li.tu-berlin.de/A/33872E.html>
or <http://standards.iso.org/iso/9241/306/ed-2/index.html>

TUB registration: 20240301-fei0/fei010fa.txt /.ps
application for evaluation and measurement of display or print output

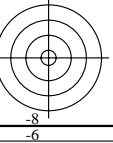
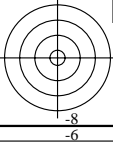
TUB material: code=rh4ta



fei00-7n-131-0: Test chart 2g with 40x27=1080 colours; digital equidistant 9 or 16 step colour scales; Colour data in column (A-n): $rgb^*(A_n, colorml = 1)$

TUB-test chart fei0; Test chart 2g_d0 with 40x27=1080 colours; 1MR, DH
Digital equidistant 9 or 16 step colour scales

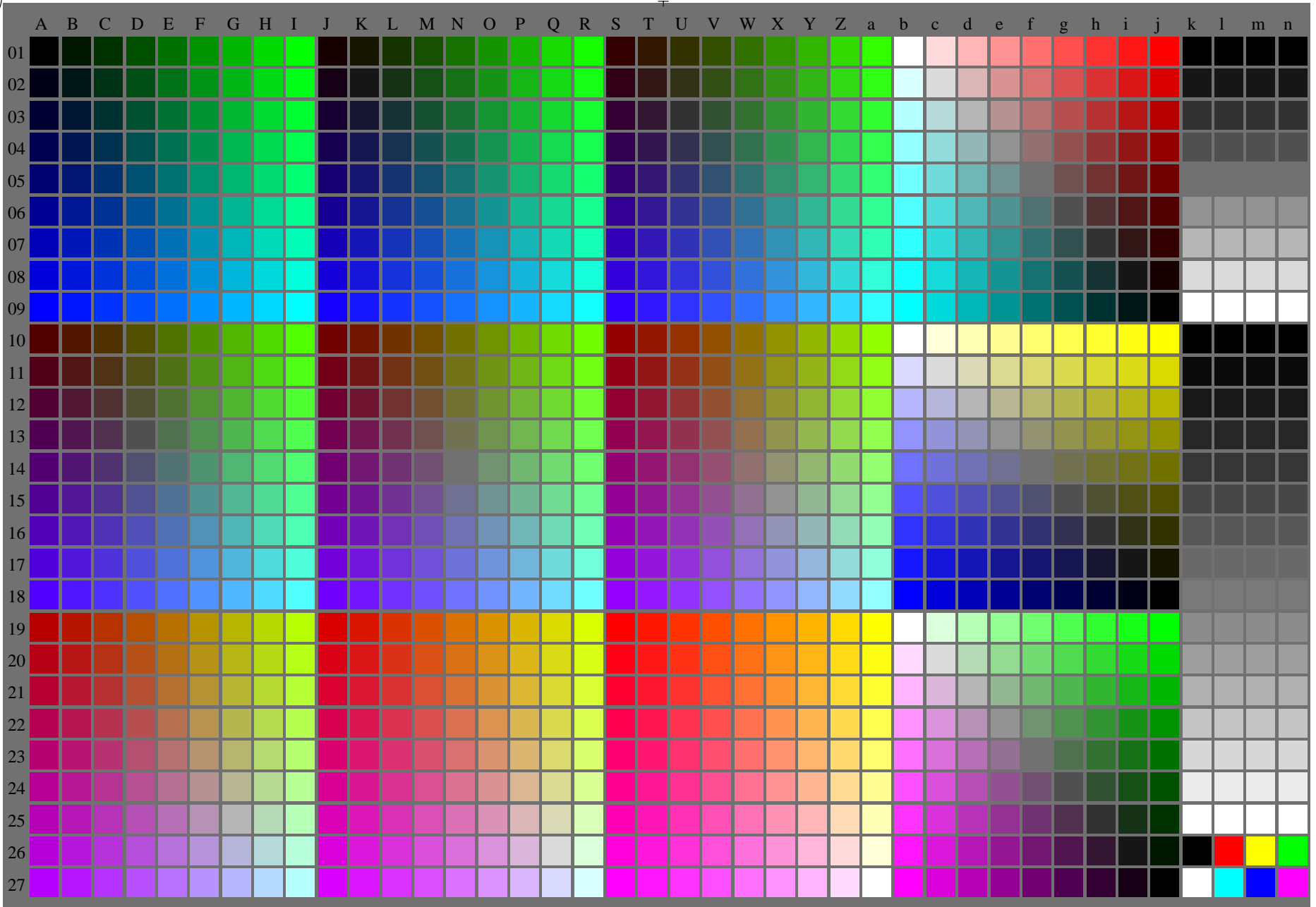
000n/w/cmy0/rgb
->rgb*_d, 130-0:



<http://farbe.li.tu-berlin.de/fei0/fei010fa.txt> /.ps; only vector graphic VG;
see separate images of this page: <http://farbe.li.tu-berlin.de/fei0/fei0.htm>

see similar files of the whole series: <http://farbe.li.tu-berlin.de/feis.htm>
technical information: <http://farbe.li.tu-berlin.de/A/33872E.html>
or <http://standards.iso.org/iso/9241/306/ed-2/index.html>

TUB registration: 20240301-fei0/fei010fa.txt /.ps
application for evaluation and measurement of display or print output
TUB material: code=rh4ta

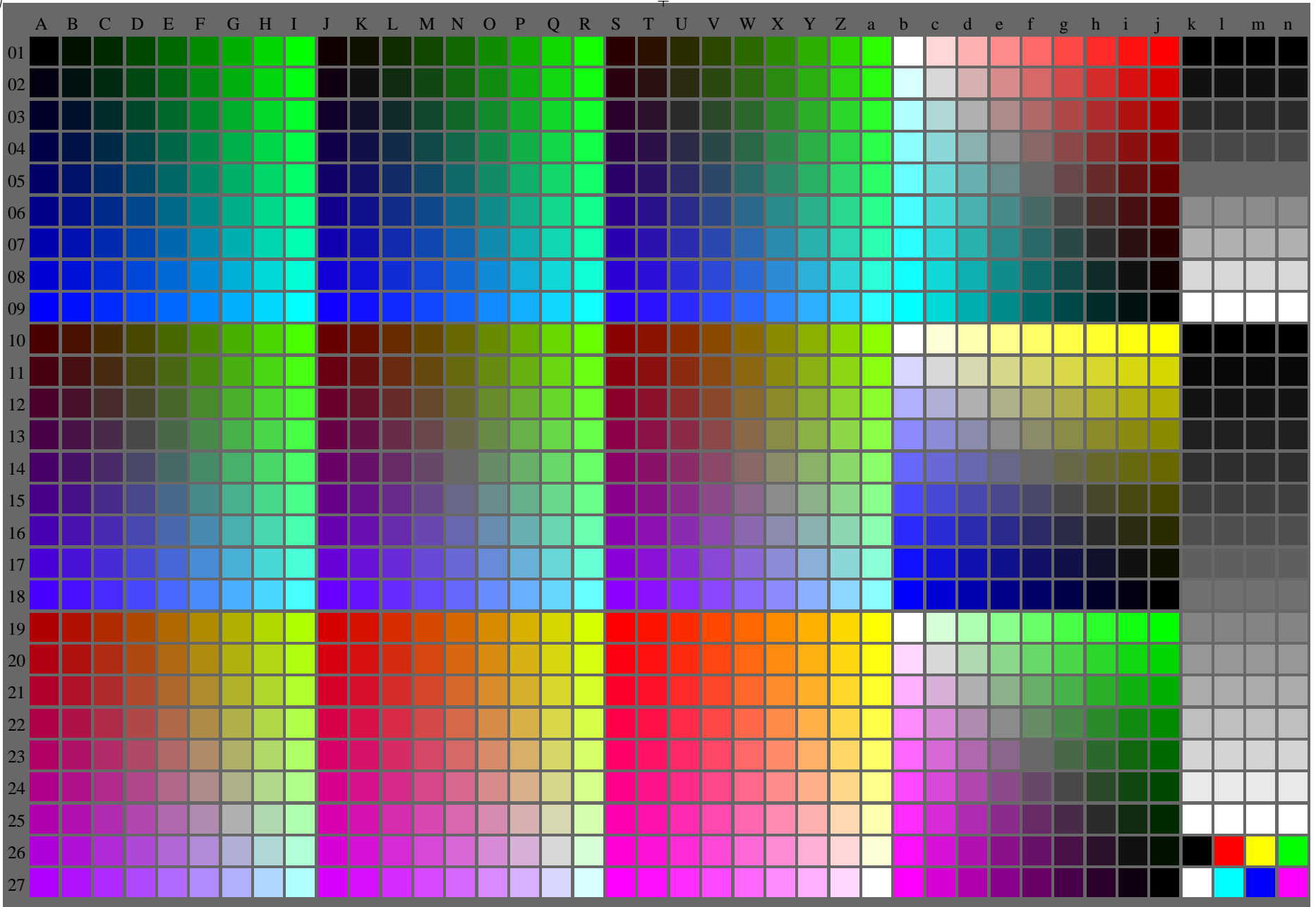
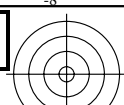
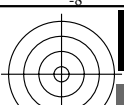


fei00-7n-132-0: Test chart 2g with 40x27=1080 colours; digital equidistant 9 or 16 step colour scales; Colour data in column (A-n): $rgb^*(A_n, colorml = 1)$

TUB-test chart fei0; Test chart 2g_d0 with 40x27=1080 colours; 1MR, DH
Digital equidistant 9 or 16 step colour scales

000n/w/cmy0/rgb
->rgb*_d, 130-0:

<http://farbe.li.tu-berlin.de/fei0/fei010fa.txt> /.ps; only vector graphic VG;
see separate images of this page: <http://farbe.li.tu-berlin.de/fei0/fei0.htm>



see similar files of the whole series: <http://farbe.li.tu-berlin.de/feis.htm>
technical information: <http://farbe.li.tu-berlin.de/A/33872E.html>
or <http://standards.iso.org/iso/9241/306/ed-2/index.html>

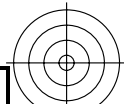
TUB registration: 20240301-fei0/fei010fa.txt /.ps
application for evaluation and measurement of display or print output
TUB material: code=rh4ta

fei00-7n-133-0: Test chart 2g with 40x27=1080 colours; digital equidistant 9 or 16 step colour scales; Colour data in column (A-n): $rgb^*(A_n, colorml = 1)$

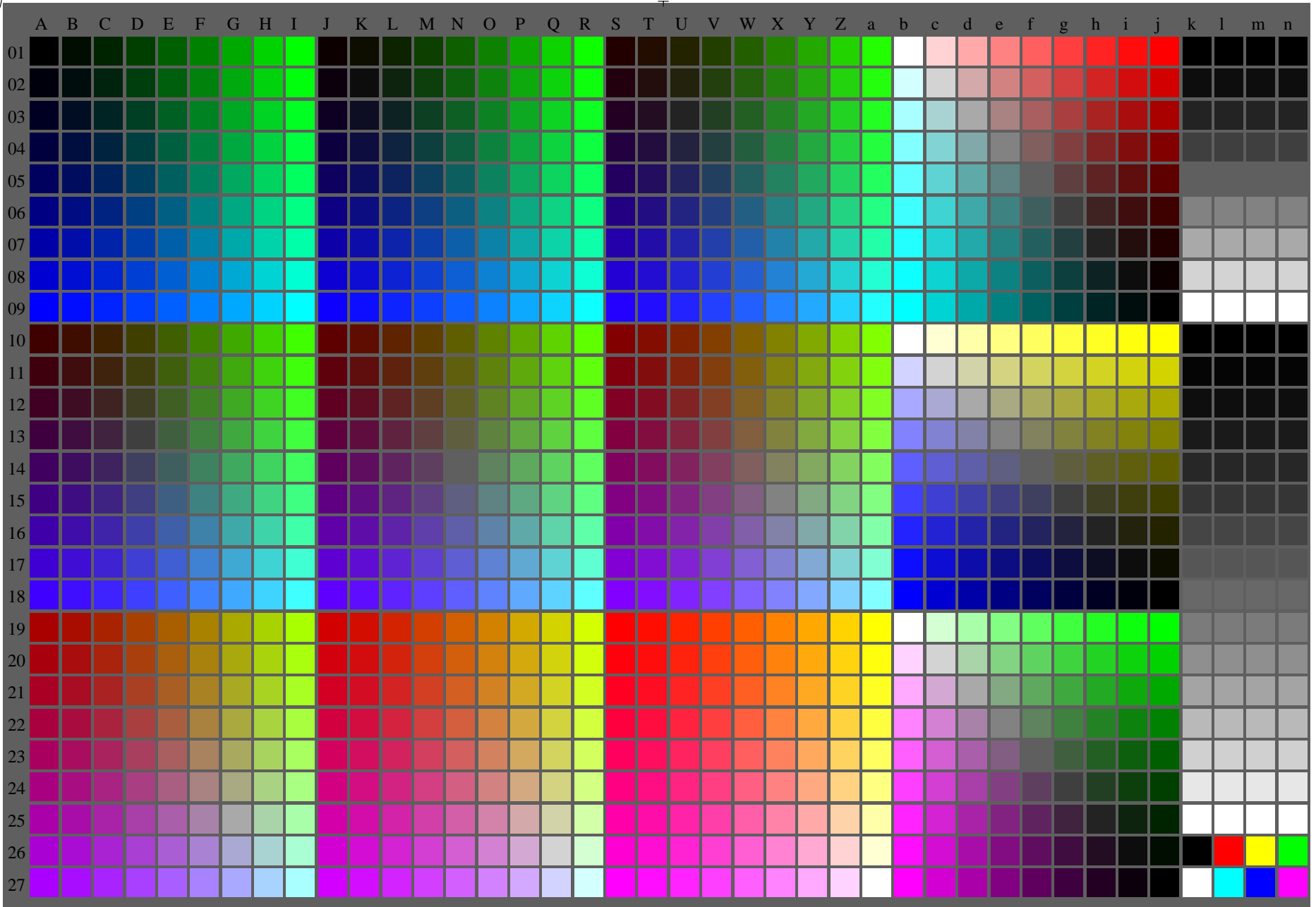
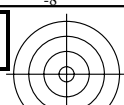
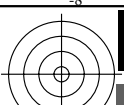


TUB-test chart fei0; Test chart 2g_d0 with 40x27=1080 colours; 1MR, DH
Digital equidistant 9 or 16 step colour scales

000n/w/cmy0/rgb
->rgb*_d, 130-0:



<http://farbe.li.tu-berlin.de/fei0/fei010fa.txt> /.ps; only vector graphic VG;
see separate images of this page: <http://farbe.li.tu-berlin.de/fei0/fei0.htm>



see similar files of the whole series: <http://farbe.li.tu-berlin.de/feis.htm>
technical information: <http://farbe.li.tu-berlin.de/A/33872E.html>
or <http://standards.iso.org/iso/9241/306/ed-2/index.html>

TUB registration: 20240301-fei0/fei010fa.txt /.ps
application for evaluation and measurement of display or print output
TUB material: code=rh4ta

fei00-7n-134-0: Test chart 2g with 40x27=1080 colours; digital equidistant 9 or 16 step colour scales; Colour data in column (A-n): $rgb^*(A_n, colorml = 1)$

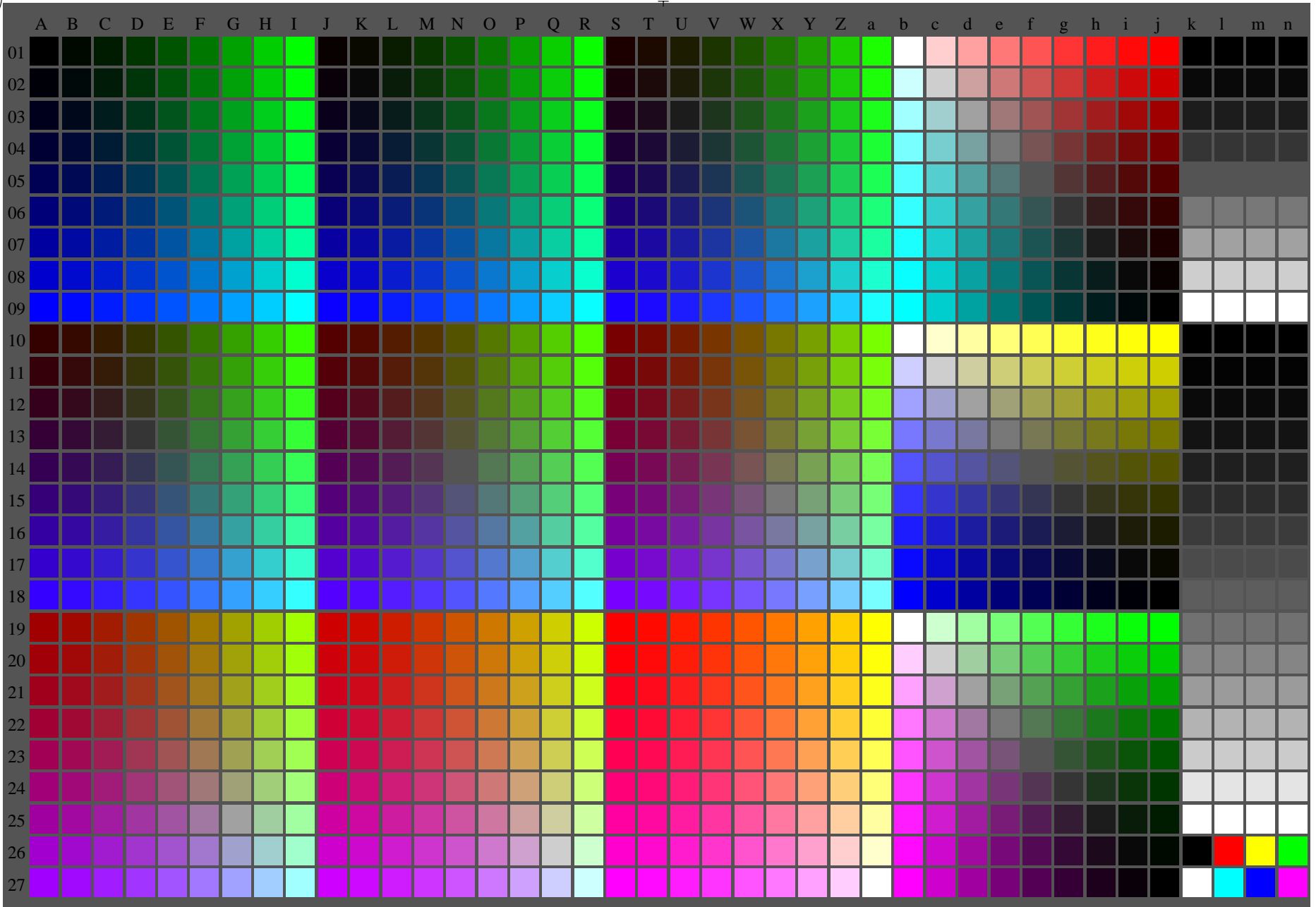
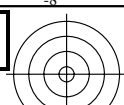
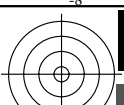


TUB-test chart fei0; Test chart 2g_d0 with 40x27=1080 colours; 1MR, DH
Digital equidistant 9 or 16 step colour scales

000n/w/cmy0/rgb
->rgb*_d, 130-0:



<http://farbe.li.tu-berlin.de/fei0/fei010fa.txt> /.ps; only vector graphic VG;
see separate images of this page: <http://farbe.li.tu-berlin.de/fei0/fei0.htm>



see similar files of the whole series: <http://farbe.li.tu-berlin.de/feis.htm>
technical information: <http://farbe.li.tu-berlin.de/A/33872E.html>
or <http://standards.iso.org/iso/9241/306/ed-2/index.html>

TUB registration: 20240301-fei0/fei010fa.txt /.ps
application for evaluation and measurement of display or print output
TUB material: code=rh4ta

fei00-7n-135-0: Test chart 2g with 40x27=1080 colours; digital equidistant 9 or 16 step colour scales; Colour data in column (A-n): $rgb^*(A_n, colorml = 1)$

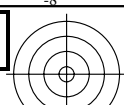
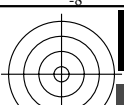


TUB-test chart fei0; Test chart 2g_d0 with 40x27=1080 colours; 1MR, DH
Digital equidistant 9 or 16 step colour scales

000n/w/cmy0/rgb
->rgb*_d, 130-0:



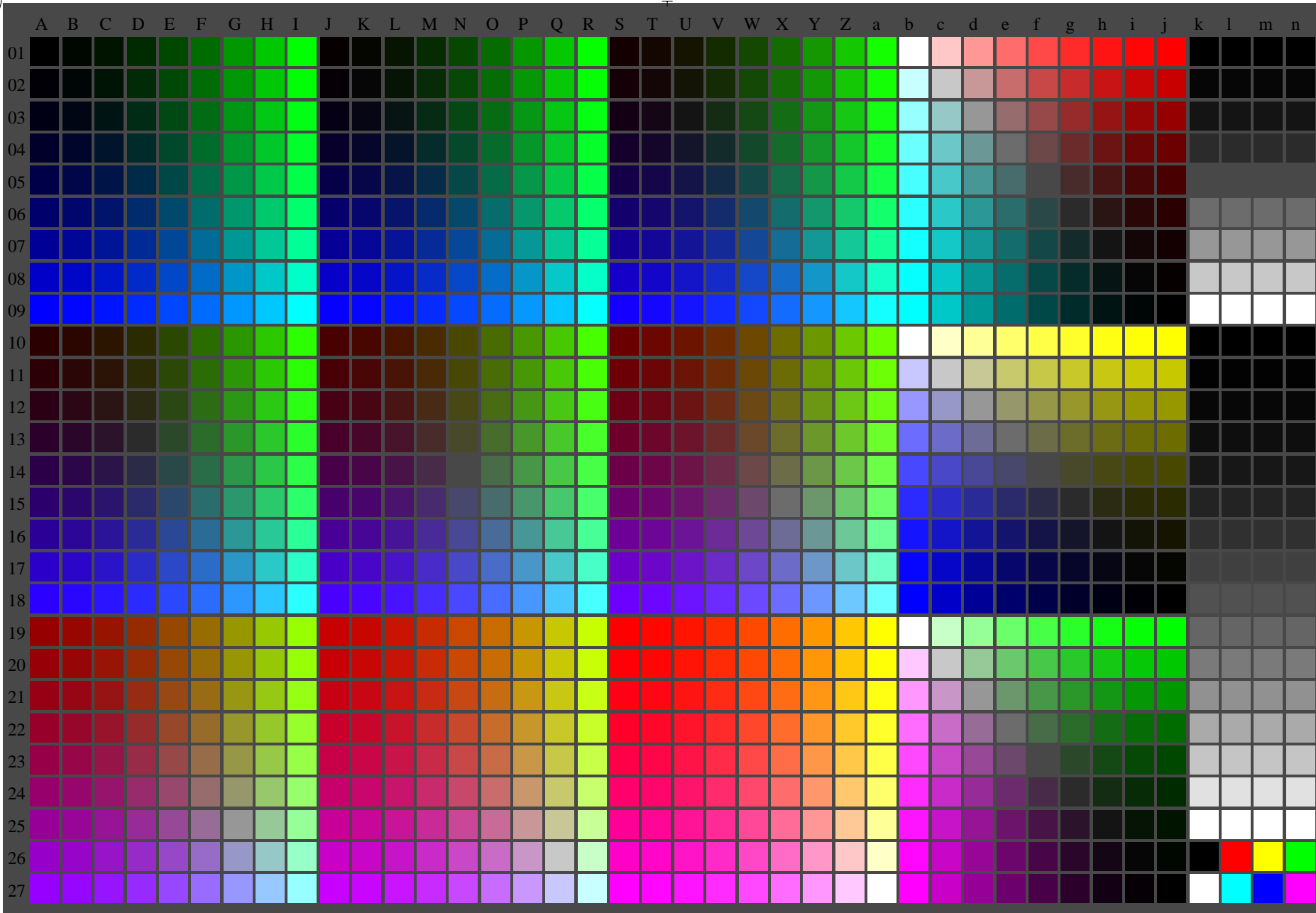
<http://farbe.li.tu-berlin.de/fei0/fei010fa.txt> /.ps; only vector graphic VG;
see separate images of this page: <http://farbe.li.tu-berlin.de/fei0/fei0.htm>



see similar files of the whole series: <http://farbe.li.tu-berlin.de/feis.htm>
technical information: <http://farbe.li.tu-berlin.de/A/33872E.html>
or <http://standards.iso.org/iso/9241/306/ed-2/index.html>

TUB registration: 20240301-fei0/fei010fa.txt /.ps
application for evaluation and measurement of display or print output

TUB material: code=rh4ta



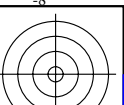
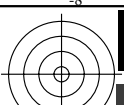
fei00-7n-136-0: Test chart 2g with 40x27=1080 colours; digital equidistant 9 or 16 step colour scales; Colour data in column (A-n): $rgb^*_{d_i}(A_n, color_{ml} = 1)$

TUB-test chart fei0; Test chart 2g_d0 with 40x27=1080 colours; 1MR, DH
Digital equidistant 9 or 16 step colour scales

000n/w/cmy0/rgb
-> $rgb^*_d, 130-0$:

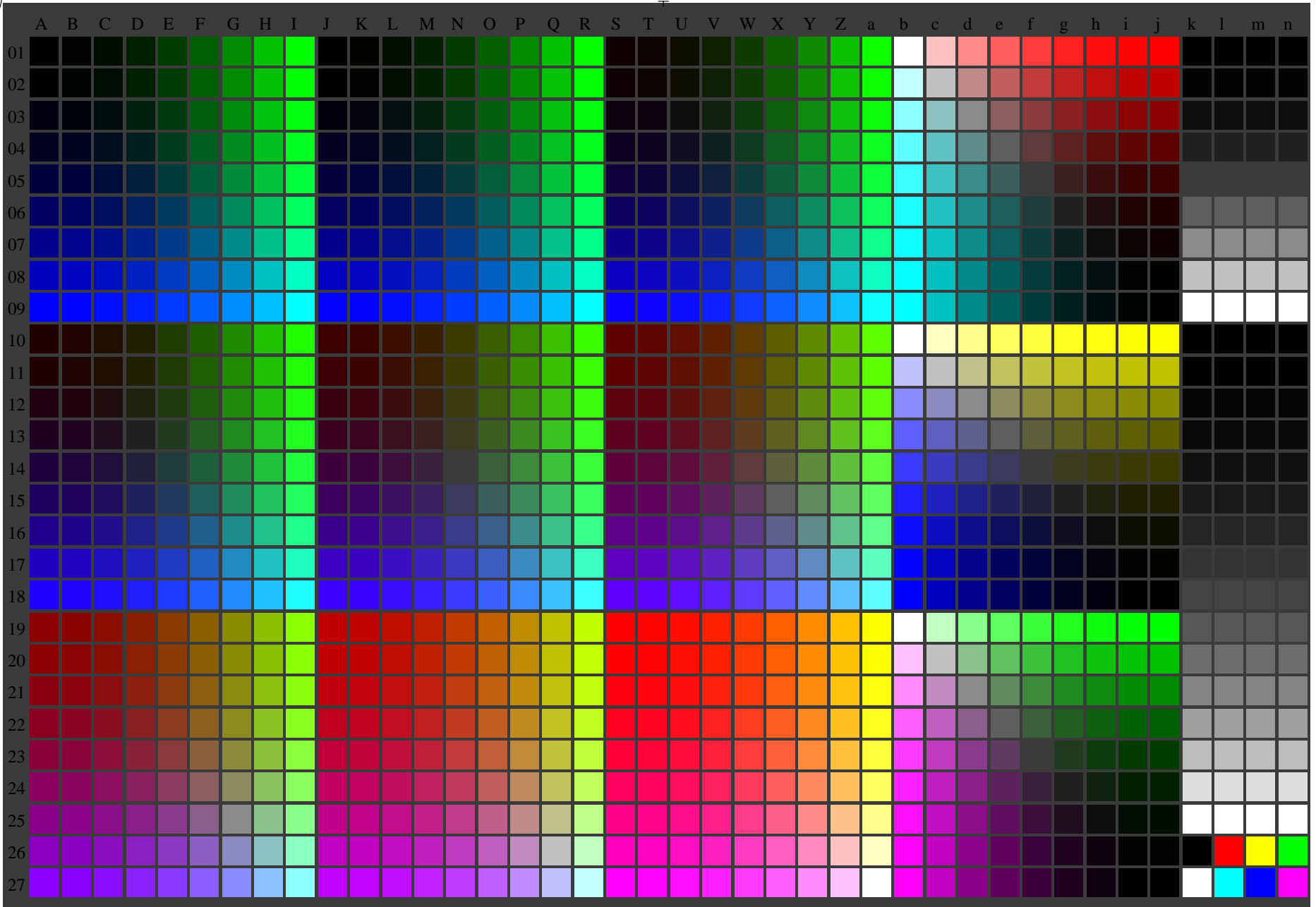


<http://farbe.li.tu-berlin.de/fei0/fei010fa.txt> /.ps; only vector graphic VG;
see separate images of this page: <http://farbe.li.tu-berlin.de/fei0/fei0.htm>



see similar files of the whole series: <http://farbe.li.tu-berlin.de/feis.htm>
technical information: <http://farbe.li.tu-berlin.de/A/33872E.html>
or <http://standards.iso.org/iso/9241/306/ed-2/index.html>

TUB registration: 20240301-fei0/fei010fa.txt /.ps
application for evaluation and measurement of display or print output
TUB material: code=rh4ta



fei00-7n-137-0: Test chart 2g with 40x27=1080 colours; digital equidistant 9 or 16 step colour scales; Colour data in column (A-n): $rgb^*_{d}(A_n, color_{ml} = 1)$



TUB-test chart fei0; Test chart 2g_d0 with 40x27=1080 colours; 1MR, DH
Digital equidistant 9 or 16 step colour scales

000n/w/cmy0/rgb
->rgb*_d, 130-0:

