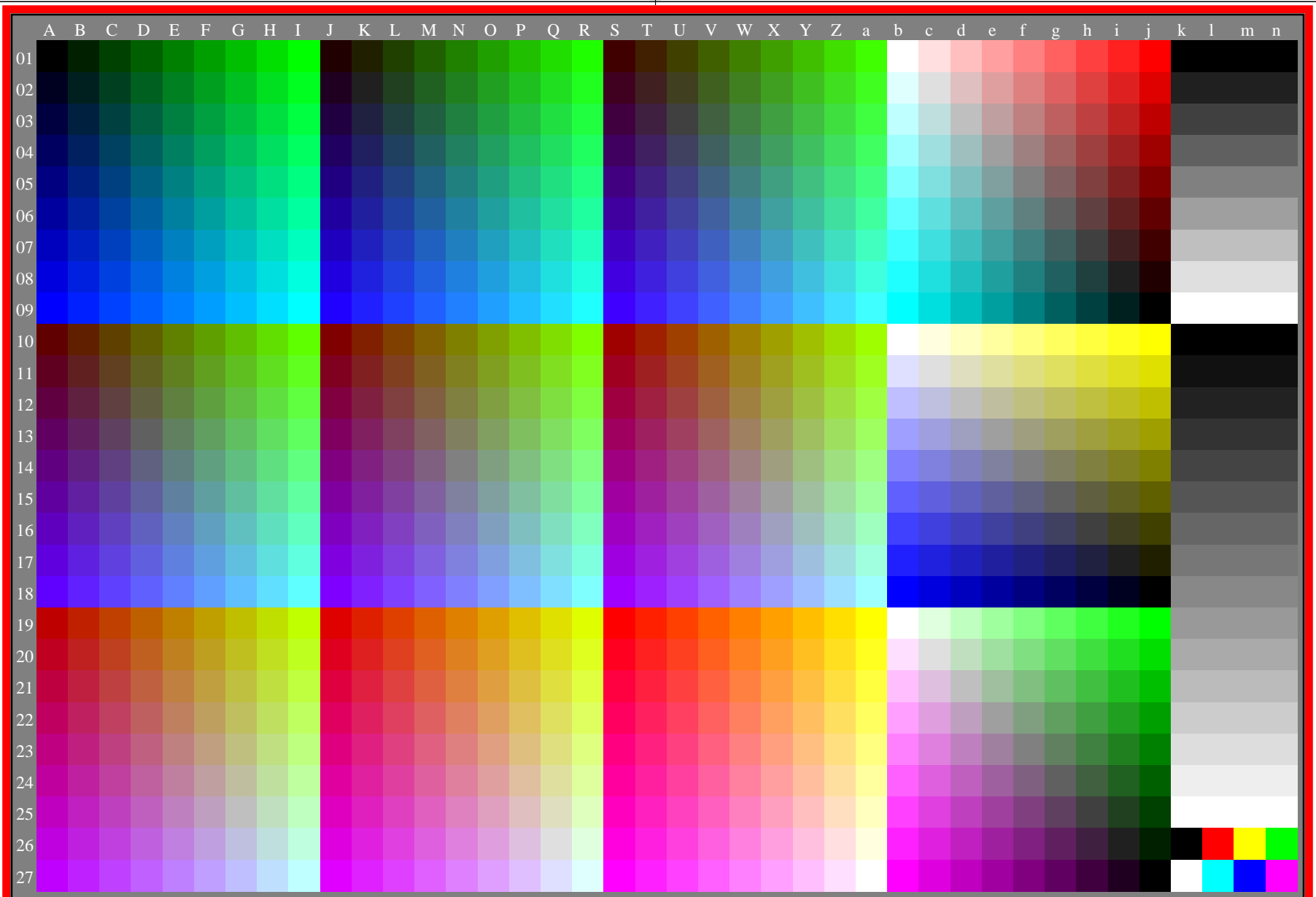


see gamma software and links to ISO-test charts <http://color.li.tu-berlin.de/eem1/eem110np.pdf>  
technical information: <http://farbe.li.tu-berlin.de> or <http://color.li.tu-berlin.de>

TUB registration: 20230615-eem5/eem510np.pdf /.ps  
application for evaluation and measurement of display or print output

TUB material: code=rh4ta



eem50-7n, gamma  $g_a=2,400$ ,  $g_p=1,000$ ,  $C_{YP8}=C_{YN8}$ ,  $rgb^*$  &  $w^*$  data, 1080 colours

eem50-7n