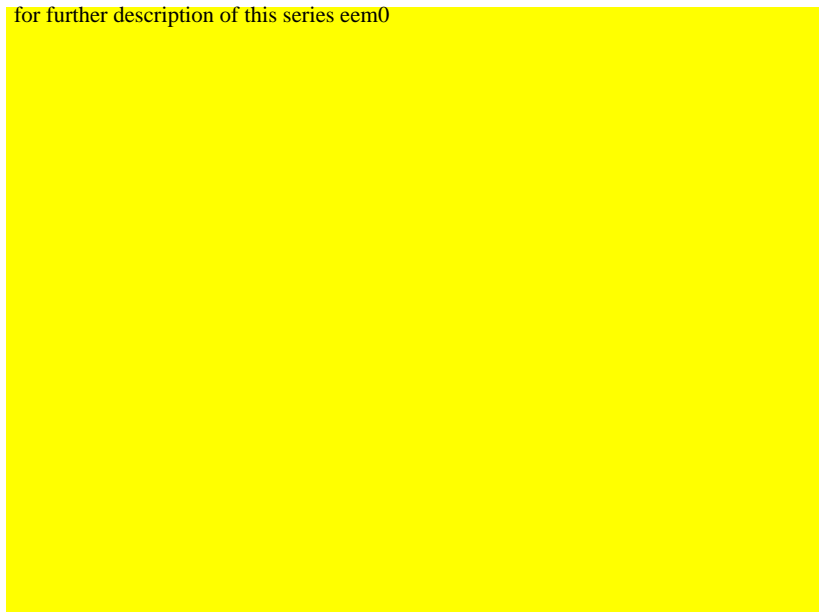


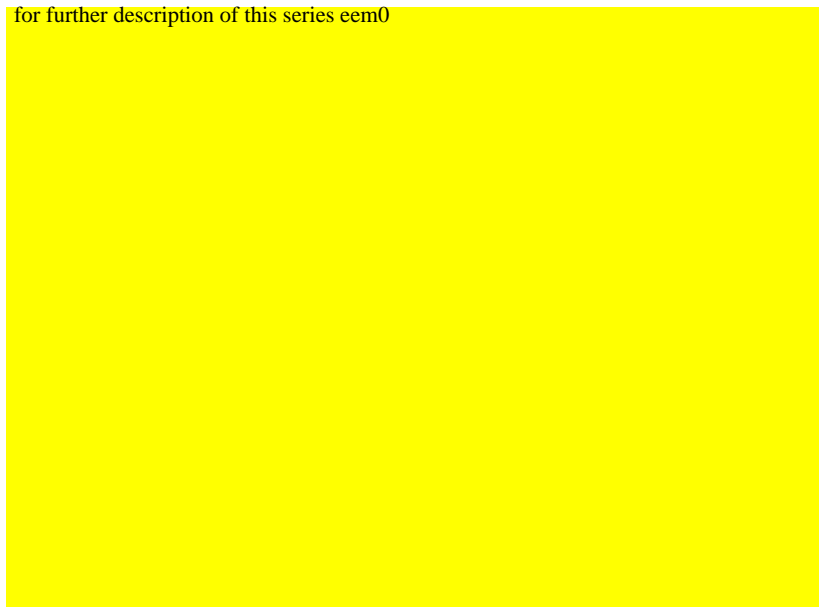
see gamma software and links to ISO-test charts <http://color.li.tu-berlin.de/eem1/eem110np.pdf>
 technical information: <http://farbe.li.tu-berlin.de> or <http://color.li.tu-berlin.de>

TUB registration: 20230615-eem0/eem010na.txt / .ps
 application for evaluation and measurement of display or print output

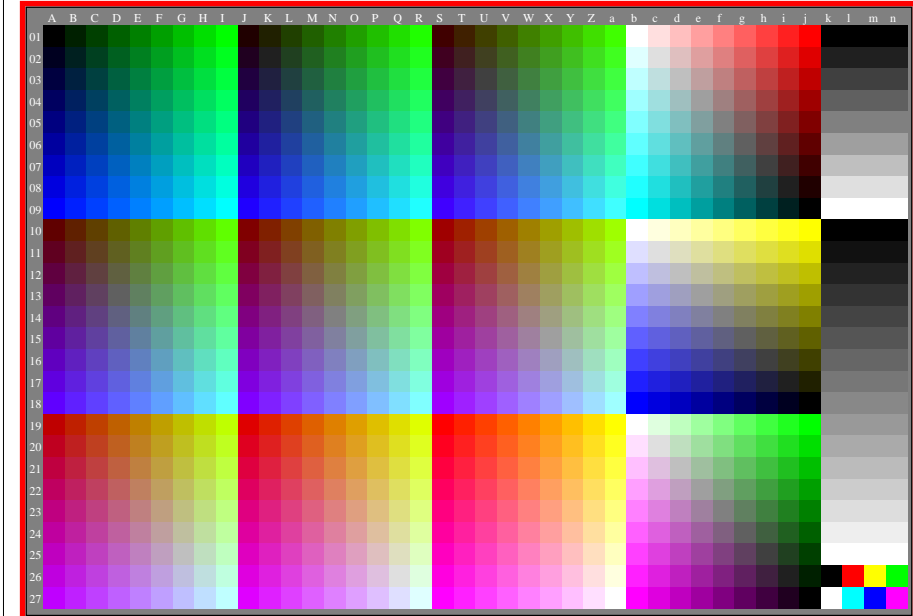
TUB material: code=rh4ta



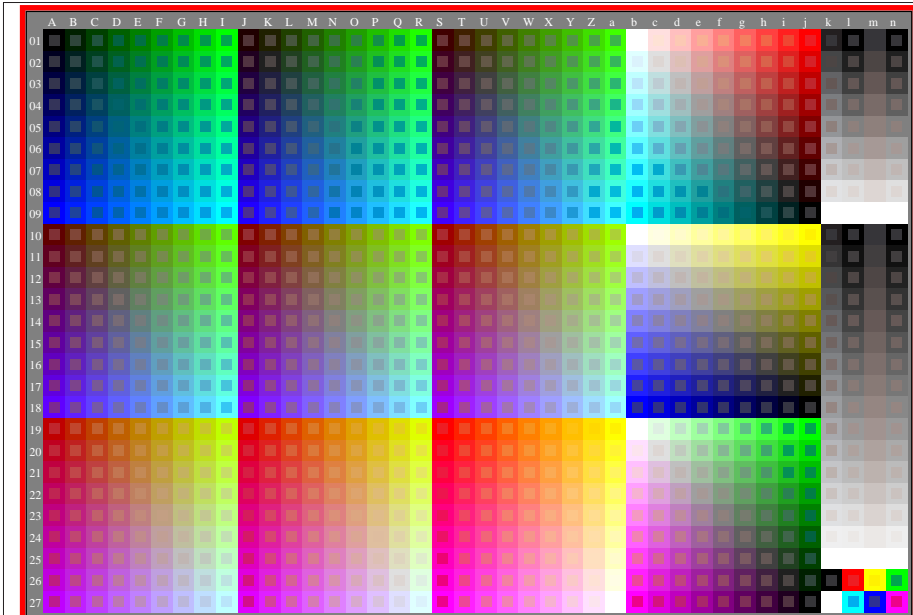
eem00-3N



eem00-7n



eem01-3N, gamma $g_a=2,400$, $g_p=1,000$, $C_{YPS}=C_{YNS}$, rgb^* & w^* data, 1080 colours



eem01-3N, gamma $g_a=2,400$, $g_p=1,000$, $C_{YPS}=C_{YNS}$, rgb^* & w^* and complementary $cmyn^*$ data, 1080 colours

eem01-7N, $g_p=1,000$

TUB-test chart eem0; Equally spaced 9 step rgb^* & w^* data for linearized display output
 Information for Gamma optimization at ergonomic display-work places according to ISO 9241-306