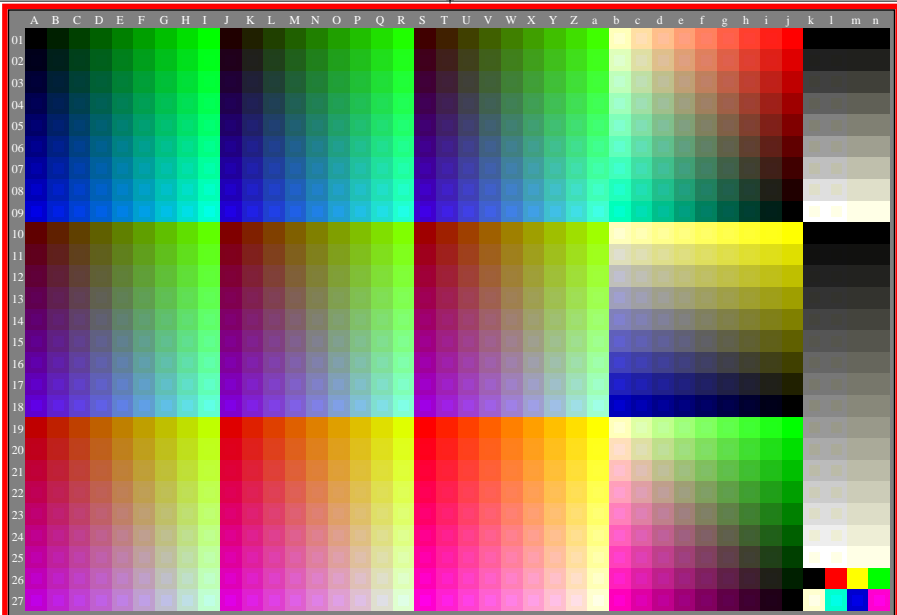


<http://farbe.li.tu-berlin.de/eei9/eei9I0n1.txt> / .ps; only vector graphic VG; start output
see separate images of this page: <http://farbe.li.tu-berlin.de/eei9/eei9.htm>

see similar files of the whole serie: <http://farbe.li.tu-berlin.de/eei9/eei9.htm>
technical information: <http://farbe.li.tu-berlin.de> or <http://color.li.tu-berlin.de>

TUB registration: 2023/07/01-eei9/eei9I0n1.txt / .ps
application for evaluation and measurement of display or print output

TUB material: code=thadata



eei90-8A, gamma $g_a=2,400$, $g_p=1,000$, $C_{YP8}=C_{YN8}$, Yellow colour tint

eei90-7, AEW60-7N, Yellow tint

TUB-test chart eei9; Test charts with 9 step colour series for ergonomic linearized display output
Gamma optimization for 15 ambient display reflections according to ISO 9241-306; Yellow colour tint