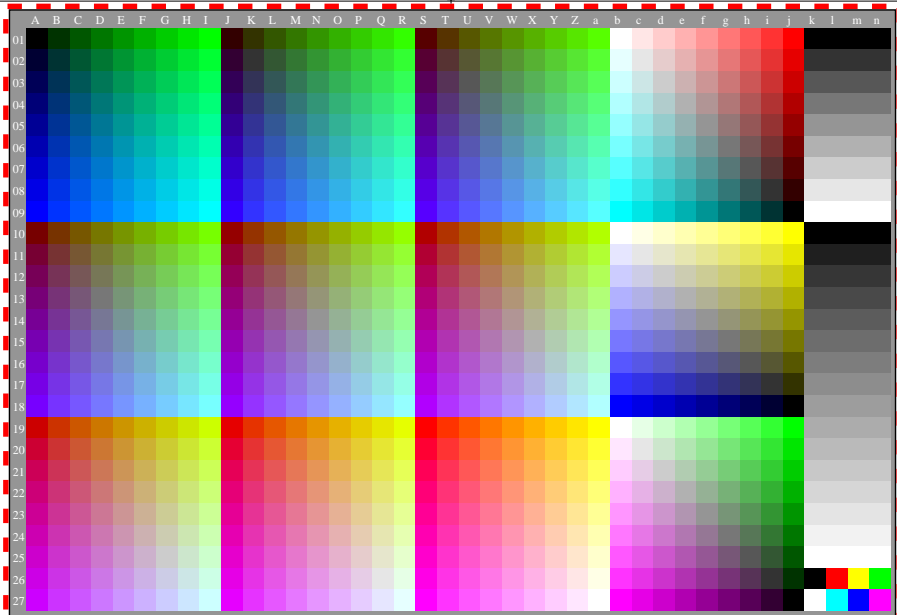


<http://farbe.li.tu-berlin.de/ei6/ei6l0n1.txt> /.ps; only vector graphic VG; start output
see separate images of this page: <http://farbe.li.tu-berlin.de/ei6/ei6.htm>

see similar files of the whole serie: <http://farbe.li.tu-berlin.de/ei6.htm>
technical information: <http://farbe.li.tu-berlin.de> or <http://color.li.tu-berlin.de>

TUB registration: 2023/07/01-ei6/ei6l0n1.txt /.ps
application for evaluation and measurement of display or print output

TUB material: code=thata



ei6l0-8A, gamma $g_a=1,860$, $g_p=0,775$, C_{Yp5}

ei6l0-7, AEW70-7N

TUB-test chart ei6; Test charts with 9 step colour series for ergonomic linearized display output
Gamma optimization for 15 ambient display reflections according to ISO 9241-306; 15 equal $\gamma_{rel}=1,000$