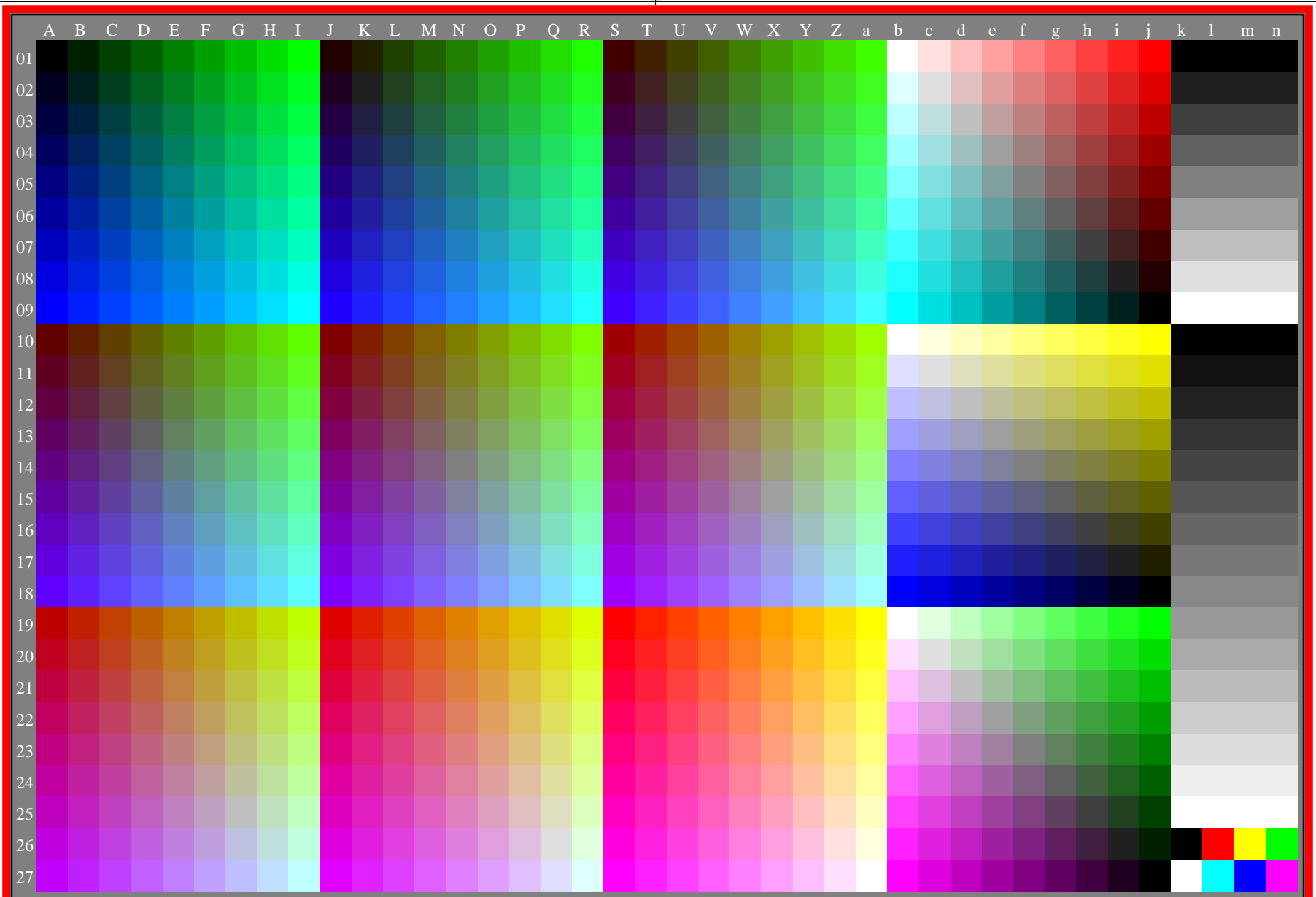


<http://farbe.li.tu-berlin.de/eei5/eei510np.pdf> /.ps; only vector graphic VG; start output  
see separate images of this page: <http://farbe.li.tu-berlin.de/eei5/eei5.htm>

see similar files of the whole serie: <http://farbe.li.tu-berlin.de/eei5.htm>  
technical information: <http://farbe.li.tu-berlin.de> or <http://color.li.tu-berlin.de>

TUB registration: 20230701-eei5/eei510np.pdf /.ps  
application for evaluation and measurement of display or print output

TUB material: code=rh4ta



eei50-8a, gamma  $g_a=2,400$ ,  $g_p=1,000$ ,  $C_{YP8}=C_{YN8}$

eei50-7n, AEW60-7N

TUB-test chart eei5; Test charts with 9 step colour series for ergonomic linearized display output  
Gamma optimization for 15 ambient display reflections according to ISO 9241-306;  $\gamma_{rel}=1,000$  (right)