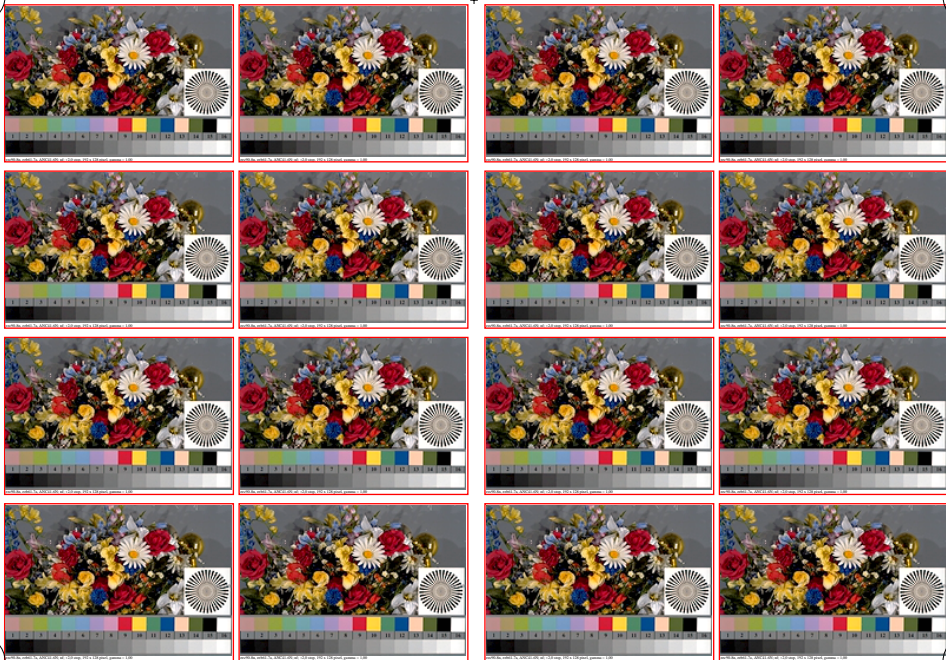


<http://farbe.li.tu-berlin.de/eec9/eec910n1.txt> /ps; only vector graphic VG; start output
see separate images of this page: <http://farbe.li.tu-berlin.de/eec9/eec9.htm>

see similar files of the whole series: <http://farbe.li.tu-berlin.de/eec9/eec9.htm>
technical information: <http://farbe.li.tu-berlin.de> or <http://color.li.tu-berlin.de>



TUB-test chart eec9; Best visual exposure of original test scene according to ISO/IEC 15775:2022
Negative film (nf), +2,0 stop, 192x128 pixel, quality: $g^*=90$, $\gamma_r=1$, visual equal images (yes/no)?

TUB registration: 20230801-eec9/eec910n1.txt /ps
application for evaluation and measurement of display or print output

TUB material: code=th4ta