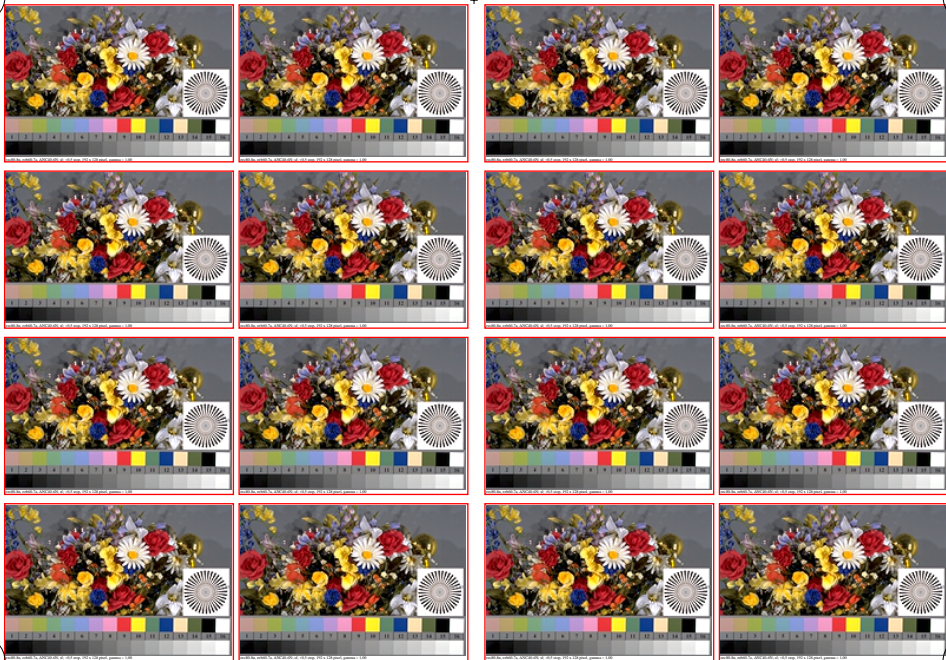


<http://farbe.li.tu-berlin.de/eec8/eec810n1.txt> /ps; only vector graphic VG; start output
see separate images of this page: <http://farbe.li.tu-berlin.de/eec8/eec8.htm>

see similar files of the whole series: <http://farbe.li.tu-berlin.de/eec8.htm>
technical information: <http://farbe.li.tu-berlin.de> or <http://color.li.tu-berlin.de>



TUB-test chart eec8; Best visual exposure of original test scene according to ISO/IEC 15775:2022
Slide film (sf), +0,5 stop, 192 x 128 pixel, quality: $g^*=90$, $\gamma_r=1$, visual equal images (yes/no)?

TUB registration: 20230801-eec8/eec810n1.txt /ps
application for evaluation and measurement of display or print output

TUB material: code=ha4ta