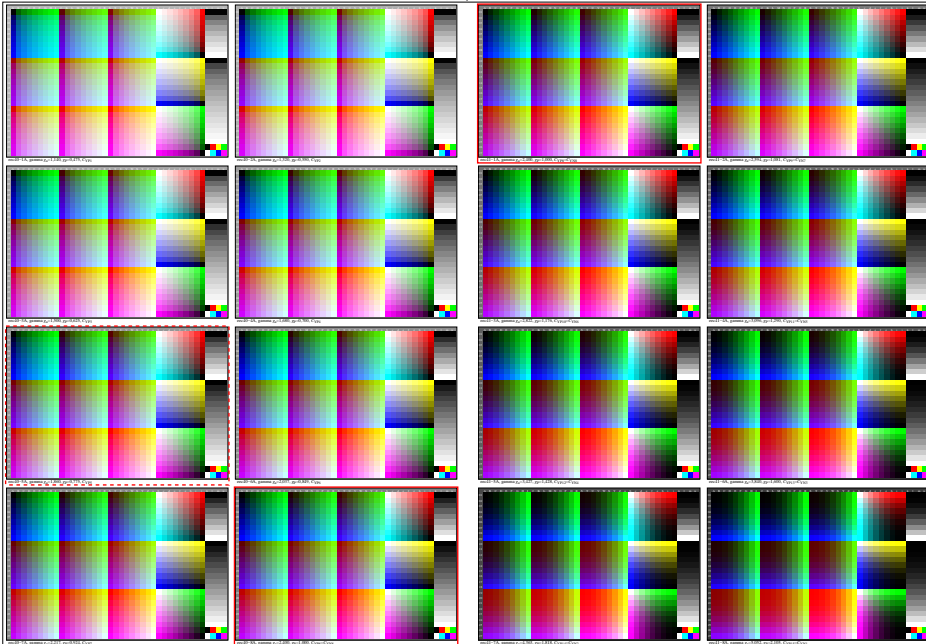


see gamma software and links to ISO test charts <http://color.li.tu-berlin.de/eem1/eem110np.pdf>  
technical information: <http://farbe.li.tu-berlin.de> or <http://color.li.tu-berlin.de>

TUB registration: 20230615-eec4/eec410n1.txt/.ps  
application for evaluation and measurement of display or print output

TUB material: code=thadta



eec40-7n