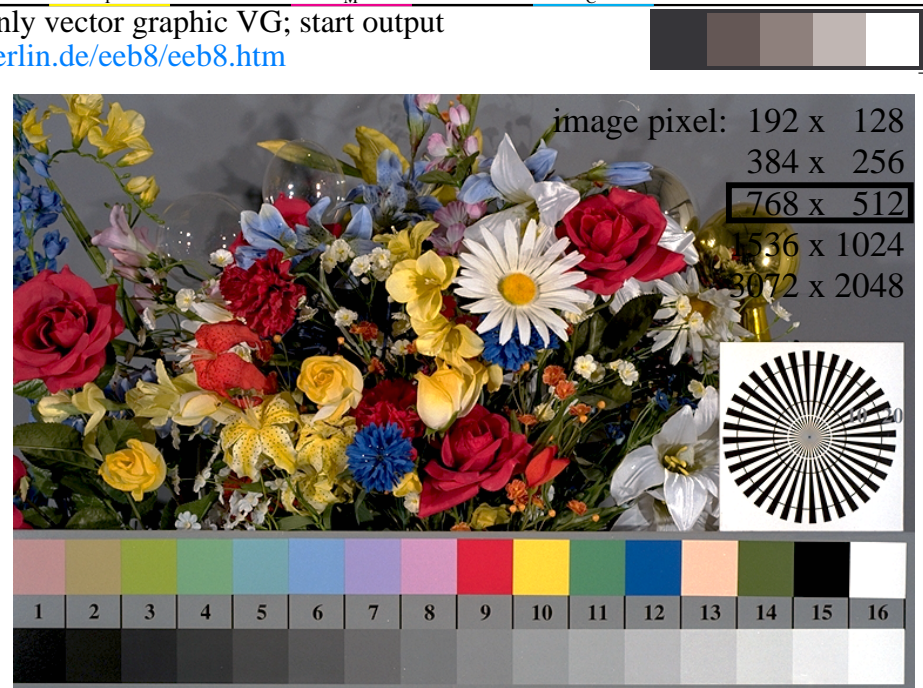


<http://farbe.li.tu-berlin.de/eeb8/eeb810np.pdf> / .ps; only vector graphic VG; start output  
see separate images of this page: <http://farbe.li.tu-berlin.de/eeb8/eeb8.htm>

see similar files of the whole serie: <http://farbe.li.tu-berlin.de/eeb8/eeb810np.pdf> / .ps  
technical information: <http://farbe.li.tu-berlin.de> or <http://color.li.tu-berlin.de>



eeb80-3n, Picture D1: Flower motif, 14 CIE-test colours and 16 grey steps (nf); PS operators *settransfer*, *3 colorimage*



eeb81-3n, Picture D1: Flower motif, 14 CIE-test colours and 16 grey steps (nf); PS operators *settransfer*, *3 colorimage*



eeb80-7n, Picture D1: Flower motif, 14 CIE-test colours and 16 grey steps (nf); PS operators *settransfer*, *3 colorimage*



eeb81-7n, Picture D1: Flower motif, 14 CIE-test colours and 16 grey steps (nf); PS operators *settransfer*, *3 colorimage*

TUB-test chart eeb8; Colour-image reproduction, change of image resolutions, contrast step  $C_{yp8}$   
ISO/IEC 15775 image, negative film (nf, +1,0 stop), PS operators: *settransfer*, *3 colorimage* (rgb)

TUB registration: 20230801-eeb8/eeb810np.pdf / .ps  
application for evaluation and measurement of display or print output

TUB material: code=thata