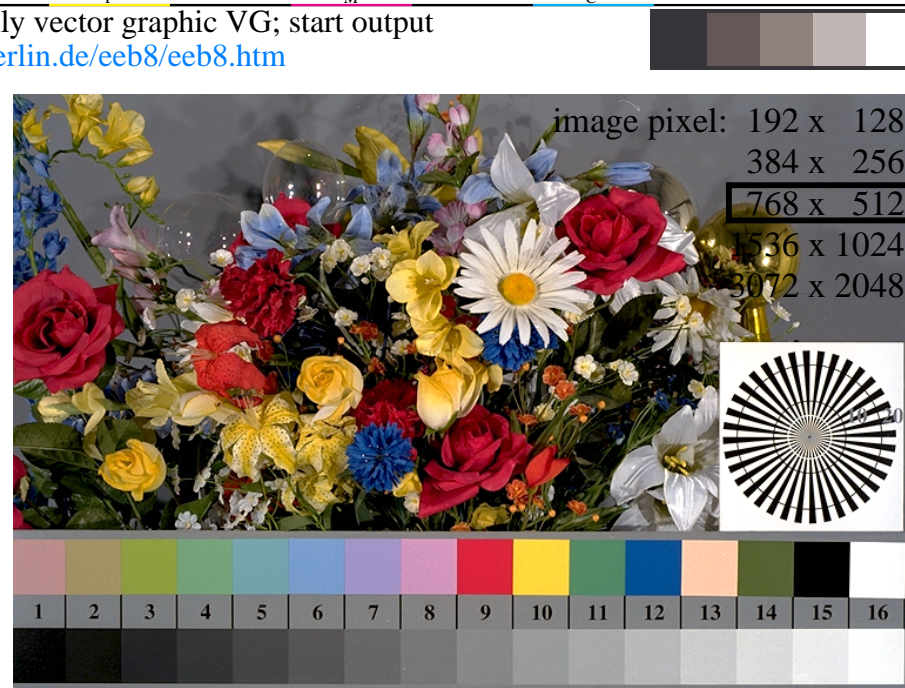


<http://farbe.li.tu-berlin.de/eeb8/eeb810na.txt> /ps; only vector graphic VG; start output  
see separate images of this page: <http://farbe.li.tu-berlin.de/eeb8/eeb8.htm>



TUB-test chart eeb8; Colour-image reproduction, change of image resolutions, contrast step  $C_{yp8}$   
ISO/IEC 15775 image, negative film (nf, +1,0 stop), PS operators: *settransfer*, 3 *colorimage* (rgb)

see similar files of the whole serie: <http://farbe.li.tu-berlin.de/eebs.htm>  
technical information: <http://farbe.li.tu-berlin.de> or <http://color.li.tu-berlin.de>

TUB registration: 20230801-eeb8/eeb810na.txt /ps  
application for evaluation and measurement of display or print output  
TUB material: code=rha4ta