

<http://farbe.li.tu-berlin.de/eeb7/eeb710na.txt> /ps; only vector graphic VG; start output
see separate images of this page: <http://farbe.li.tu-berlin.de/eeb7/eeb7.htm>



image pixel: 192 x 128
384 x 256
768 x 512
1536 x 1024
3072 x 2048

eeb70-3n, Picture B1: Flower motif, 14 CIE-test colours and 16 grey steps (sf); PS operators *settransfer*, 3 *colorimage*

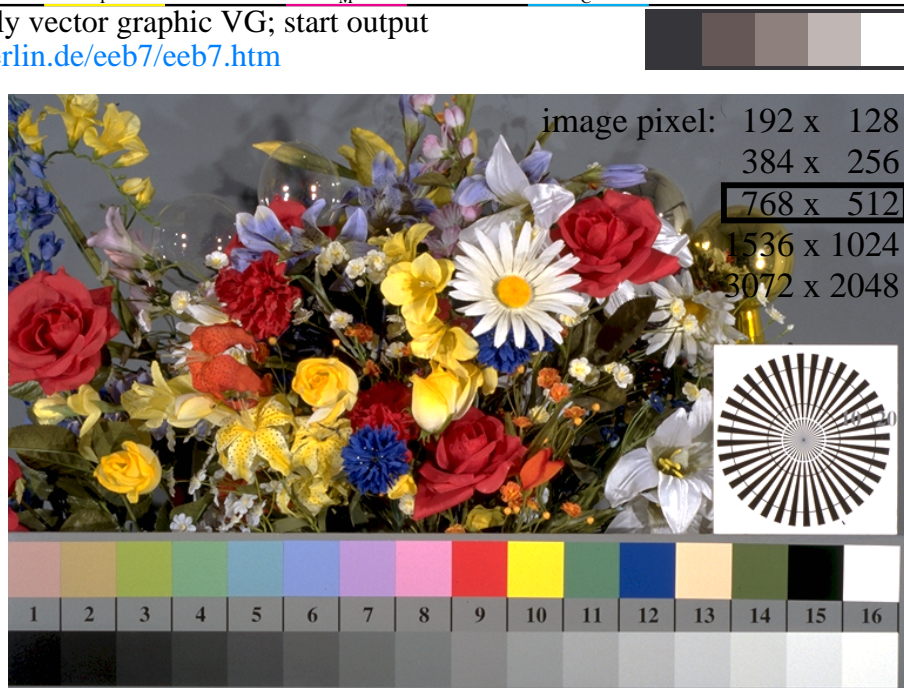


image pixel: 192 x 128
384 x 256
768 x 512
1536 x 1024
3072 x 2048

eeb71-3n, Picture B1: Flower motif, 14 CIE-test colours and 16 grey steps (sf); PS operators *settransfer*, 3 *colorimage*



image pixel: 192 x 128
384 x 256
768 x 512
1536 x 1024
3072 x 2048

eeb70-7n, Picture B1: Flower motif, 14 CIE-test colours and 16 grey steps (sf); PS operators *settransfer*, 3 *colorimage*



image pixel: 192 x 128
384 x 256
768 x 512
1536 x 1024
3072 x 2048

eeb71-7n, Picture B1: Flower motif, 14 CIE-test colours and 16 grey steps (sf); PS operators *settransfer*, 3 *colorimage*

TUB-test chart eeb7; Colour-image reproduction, change of image resolutions, contrast step C_{yp8}
ISO/IEC 15775 image, slide film (sf, +0,5 stop), PS operators: *settransfer*, 3 *colorimage* (rgb)

see similar files of the whole serie: <http://farbe.li.tu-berlin.de/eebs.htm>
technical information: <http://farbe.li.tu-berlin.de> or <http://color.li.tu-berlin.de>

TUB registration: 20230801-eeb7/eeb710na.txt /ps
application for evaluation and measurement of display or print output

TUB material: code=rha4ta