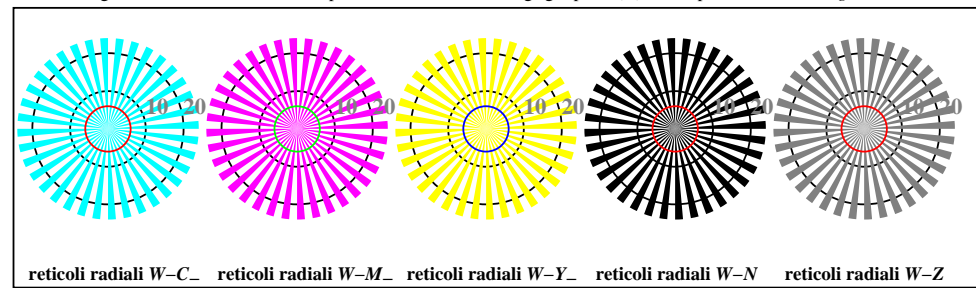
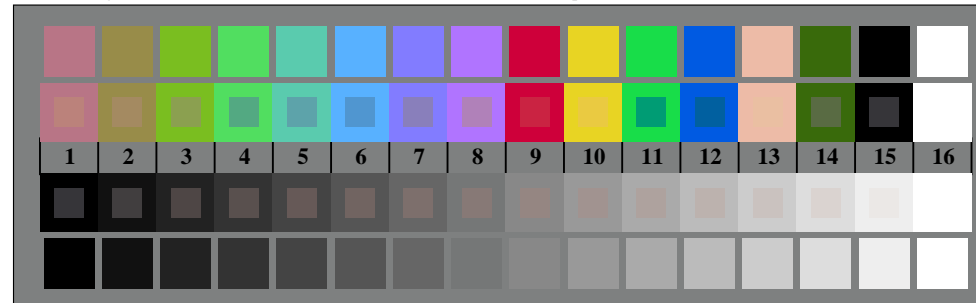




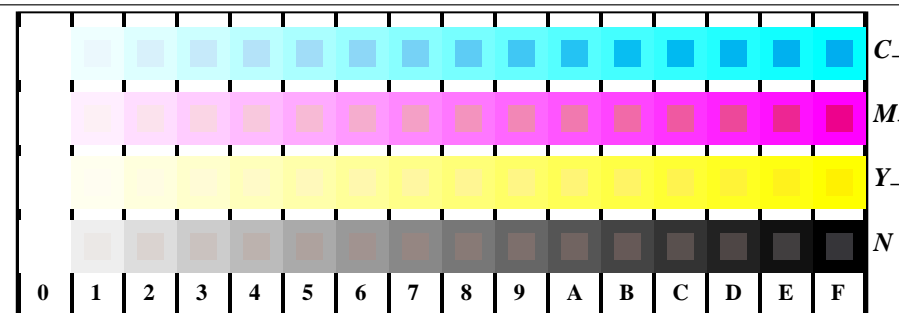
TI950-3, Fig. B1W-: motivo floreale, 14 prova colori CIE i 2 + 16 grigio passi (sf); PS operator 4 colorimage



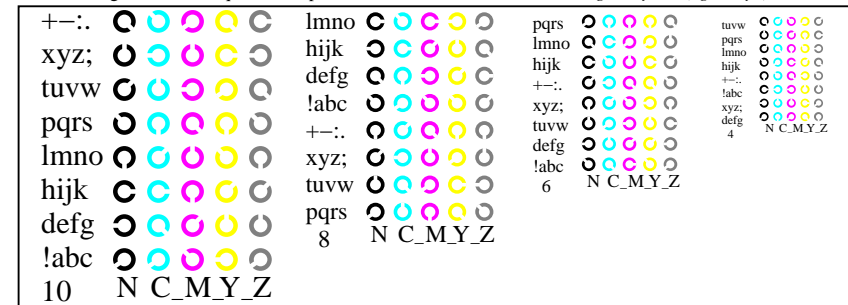
TI950-5, Fig. B2W-: reticoli radiali W-C; W-M; W-Y; W-N; PS operator rgb->rgb\_setrgbcolor



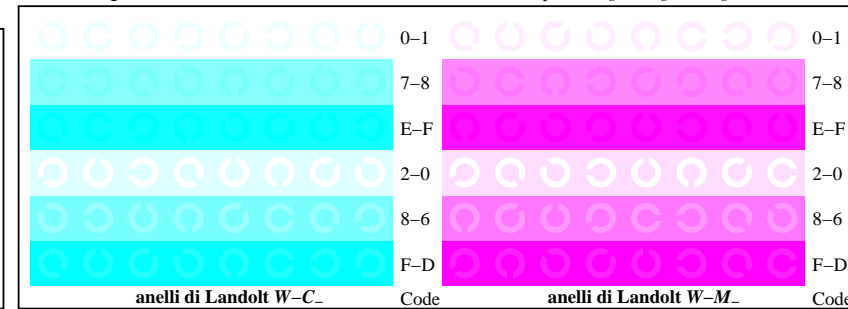
TI950-7, Fig. B3W-: 14 prova colori CIE i 2 + 16 grigio passi (sf); rgb/cmy0 set(rgb/cmyk)color



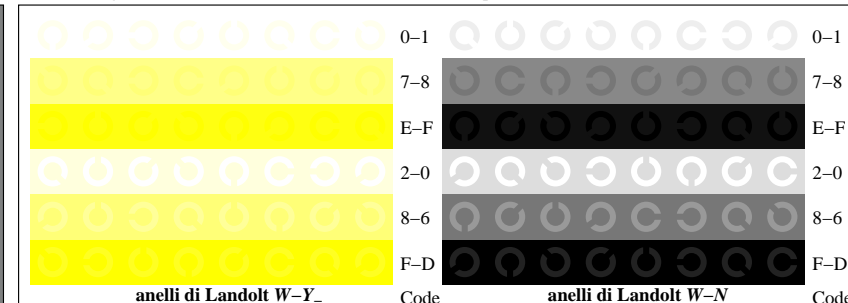
TI951-1, Fig. B4W-: 16 equidistante passi W-C; W-M; W-Y; W-N; rgb/cmy0 set(rgb/cmyk)color



TI951-3, Fig. B5W-: codice i Landolt anelli N; C; M; Y; Z; PS operator rgb->rgb\_setrgbcolor



TI951-5, Fig. B6W-: anelli di Landolt W-C; W-M; PS operator rgb\_setrgbcolor



TI951-7, Fig. B7W-: anelli di Landolt W-Y; W-N; PS operator rgb\_setrgbcolor