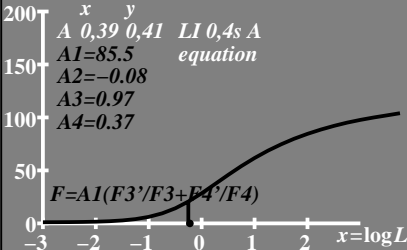


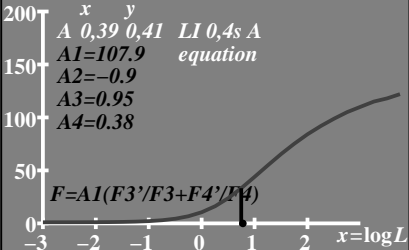
T^* Amount of
threshold steps

• $L_g=0,6\text{cd/m}^2$



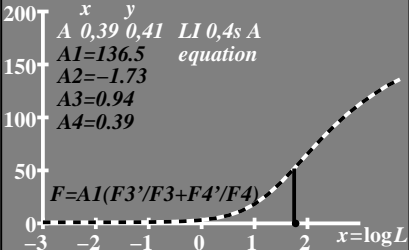
T^* Amount of
threshold steps

• $L_g = 6 \text{ cd/m}^2$



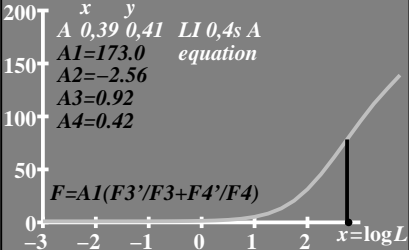
T^* Amount of
threshold steps

• $L_g = 60 \text{ cd/m}^2$



T^* Amount of
threshold steps

• $L_g = 600 \text{ cd/m}^2$



T^* Amount of
threshold steps

• $L_g = 6000 \text{ cd/m}^2$

