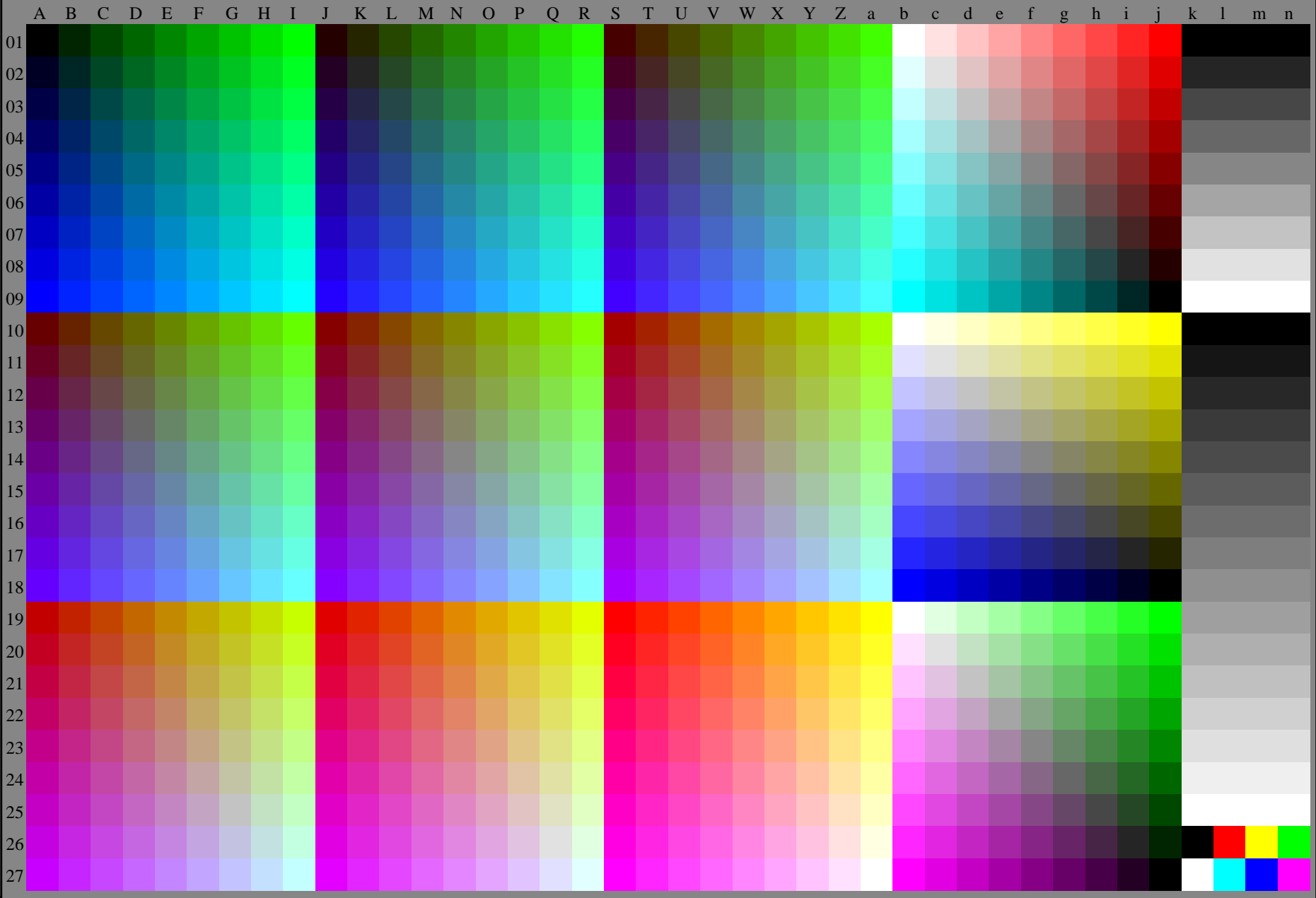


http://130.149.60.45/~farbmetrik/RE68/RE68L0NP.PDF /.PS; transfer output  
N: no 3D-linearization (OL) in file (F) or PS-startup (S), page 2/2

see similar files: <http://130.149.60.45/~farbmetrik/RE68/RE68L0NP.PDF /.PS>  
technical information: <http://www.ps.bam.de> or <http://130.149.60.45/~farbmetrik>

TUB registration: 20150701-RE68/RE68L0NP.PDF /.PS  
application for measurement of display output, no separation rgb (RGB)  
TUB material: code=thata4ta



RE680-70 1-003134-L0

TUB-test chart RE68; 1080 standard colours,  $cf=1$   
Test chart according to DIN 33872, 3D=0, de=0, *rgb*

input: *rgb/cmyk* -> *rgb<sub>d</sub>*  
output: transfer to *rgb<sub>d</sub>*

1-003134-F0