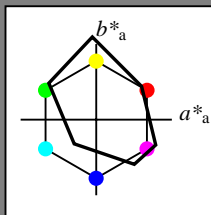


Input: Colorimetric Foto Reflective System FRS12_95a, $L^*=12_95$
with lab^*rgb^* data of the
four elementary hues

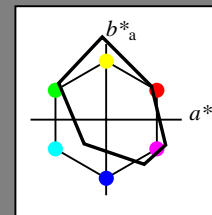
1 0 0 = Red $R = r00j$
1 1 0 = Yellow $J = j00g$
0 1 0 = Green $G = g00b$
0 0 1 = Blue $B = b00r$



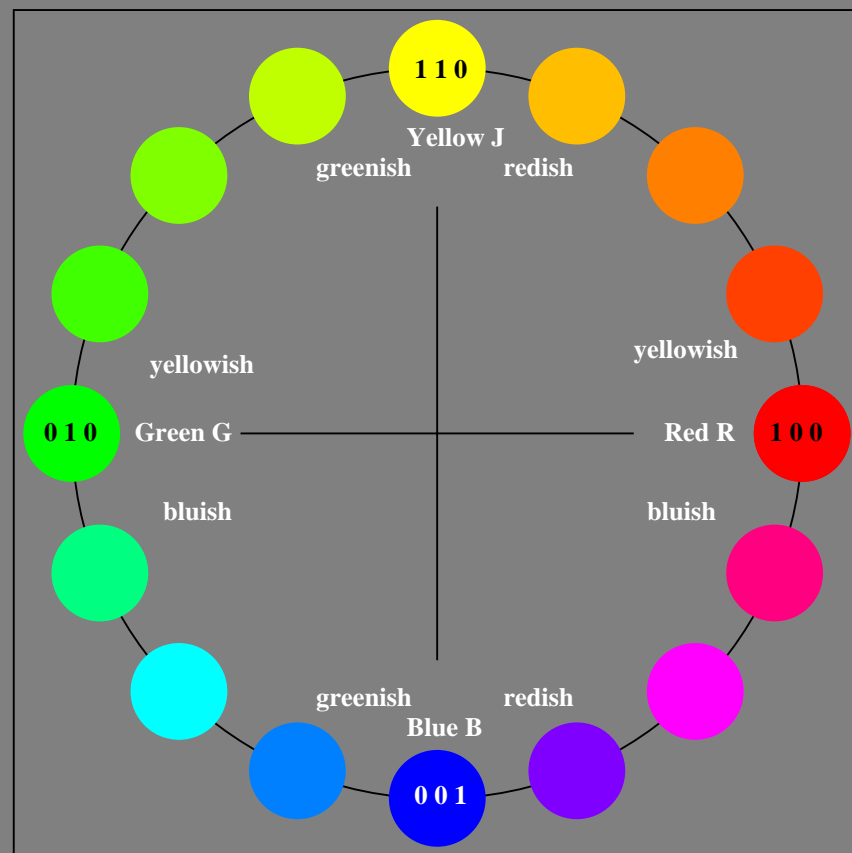
FRS12_95; adapted (a) CIELAB data					
	$L^*=L^*_a$	a^*_a	b^*_a	$C^*_{ab,a}$	$h^*_{ab,a}$
O _{Ma}	38.06	60.0	44.0	74.4	36
Y _{Ma}	86.77	-5.16	109.32	109.44	93
L _{Ma}	47.13	-62.66	48.24	79.09	142
C _{Ma}	55.66	-29.13	-31.98	43.27	228
V _{Ma}	17.15	50.3	-59.03	77.57	310
M _{Ma}	40.37	78.64	-33.49	85.48	337
N _{Ma}	11.58	0.0	0.0	0.0	0
W _{Ma}	95.02	0.0	0.0	0.0	0
R _{CIE}	39.92	58.2	35.4	68.12	31
J _{CIE}	81.26	-3.53	80.52	80.6	93
G _{CIE}	52.23	-42.98	21.47	48.06	153
B _{CIE}	30.57	0.9	-39.4	39.42	271

Output: Colorimetric Foto Reflective System FRS12_95a, $L^*=12_95$
with hue number and text
 $n=00$ to 15

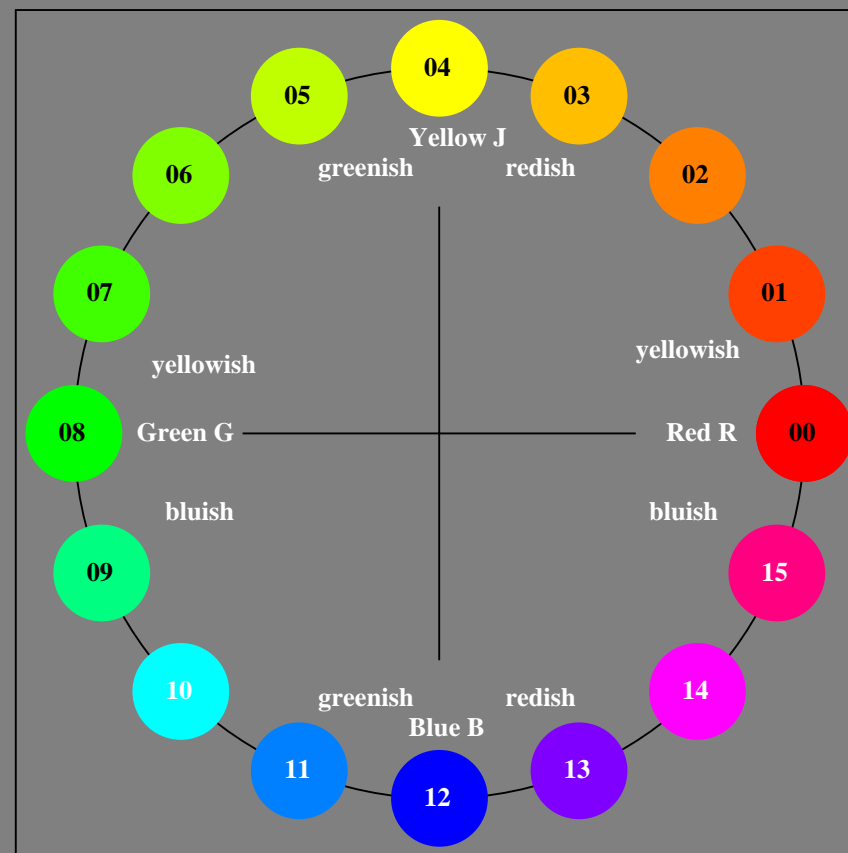
00 = Red $R = r00j$
04 = Yellow $J = j00g$
08 = Green $G = g00b$
12 = Blue $B = b00r$



FRS12_95; adapted (a) CIELAB data					
	$L^*=L^*_a$	a^*_a	b^*_a	$C^*_{ab,a}$	$h^*_{ab,a}$
O _{Ma}	38.06	60.0	44.0	74.4	36
Y _{Ma}	86.77	-5.16	109.32	109.44	93
L _{Ma}	47.13	-62.66	48.24	79.09	142
C _{Ma}	55.66	-29.13	-31.98	43.27	228
V _{Ma}	17.15	50.3	-59.03	77.57	310
M _{Ma}	40.37	78.64	-33.49	85.48	337
N _{Ma}	11.58	0.0	0.0	0.0	0
W _{Ma}	95.02	0.0	0.0	0.0	0
R _{CIE}	39.92	58.2	35.4	68.12	31
J _{CIE}	81.26	-3.53	80.52	80.6	93
G _{CIE}	52.23	-42.98	21.47	48.06	153
B _{CIE}	30.57	0.9	-39.4	39.42	271



Fe610-7N, 16 step hue circle with elementary colours R, J, G, B (left)



16 step hue circle with elementary colours R, J, G, B (right)