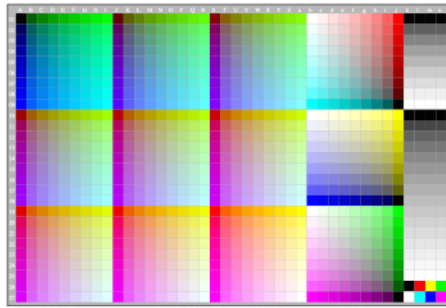


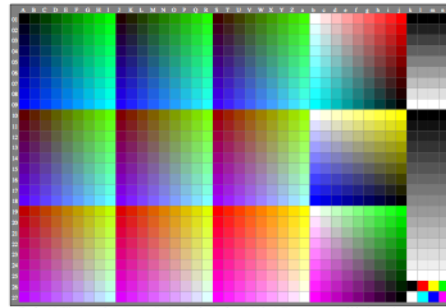
```

Frame File PostScript Code for 1-Minus-Relation (1MR) to setrgbcolor
01 !PS-Adobe-3.0 EPSF-3.0, 1MR for change to setrgbcolor
02 /FFM_setrgbcolor {setrgbcolor} bind def
03 /IMR-0000 {%BEG procedure 1MR-0000
04 1MR-Transform of setgray and setcmykcolor to FFM_setrgbcolor
05
06 /setgray {%BEG procedure setgray to setrgbcolor
07 dup dup FFM_setrgbcolor
08 } def %END procedure setgray to setrgbcolor
09
10 /setcmykcolor {%BEG procedure setcmykcolor to setrgbcolor
11 /FFM_x exch def /FFM_y exch def /FFM_m exch def /FFM_c exch def
12 /FFM_k 0 eq { /FFM_c sub 1 /FFM_m sub 1 /FFM_y sub /FFM_x setrgbcolor }
13 { /FFM_x sub dup dup /FFM_setrgbcolor } ifelse
14 } def %END procedure setcmykcolor to setrgbcolor
15
16 } def %END procedure 1MR-0000
17 %trailer %END 1-Minus-Relation (1MR) to setrgbcolor
Remarks:
line 02: necessary for the revised definition of rgb setrgbcolor.
The FF_PS file shall include line 02 before the use of IMR-0000.
line 06 to 08: change of w setgray to rgb setrgbcolor.
line 10 to 14: change of cmyk setcmykcolor to rgb setrgbcolor.
The PostScript code for both the changes of 1MR and gamma is in:
AEA20-7N and AEA20-8N.
AEA60-1N
    
```

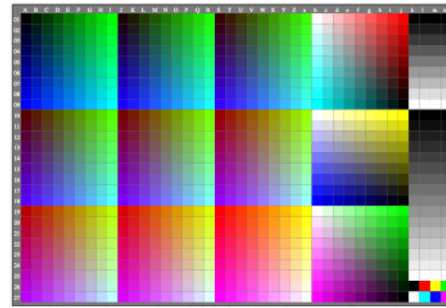
see similar files: <http://farbe.li.tu-berlin.de/AEA7/AEA7L0NP.pdf>
 technical information: <http://farbe.li.tu-berlin.de> or <http://130.149.60.45/~farbmetrik>



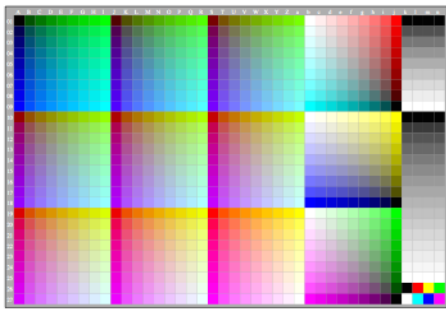
AEA60-2N, File: <http://farbe.li.tu-berlin.de/AEA6/AEA60-2N.EPS>, 1MR, gamma_{gp}=0.475, C_{Yp2}



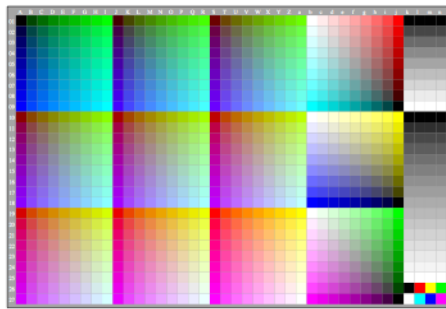
AEA61-1N, File: <http://farbe.li.tu-berlin.de/AEA6/AEA61-1N.EPS>, 1MR, gamma_{gp}=1.000, C_{Yp2}=C_{Ys2}



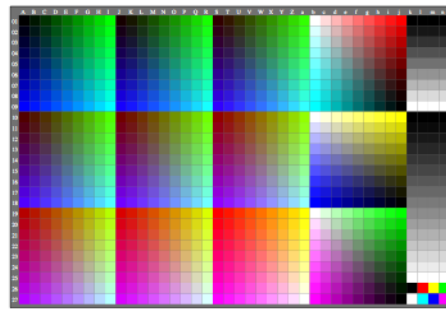
AEA61-2N, File: <http://farbe.li.tu-berlin.de/AEA6/AEA61-2N.EPS>, 1MR, gamma_{gp}=1.081, C_{Yp2}=C_{Ys2}



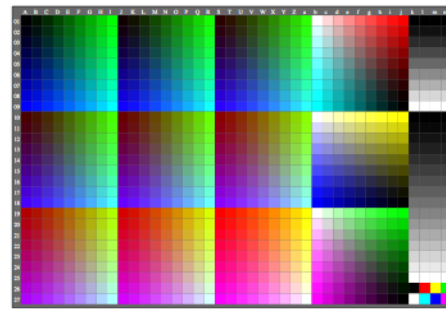
AEA60-3N, File: <http://farbe.li.tu-berlin.de/AEA6/AEA60-3N.EPS>, 1MR, gamma_{gp}=0.550, C_{Yp2}



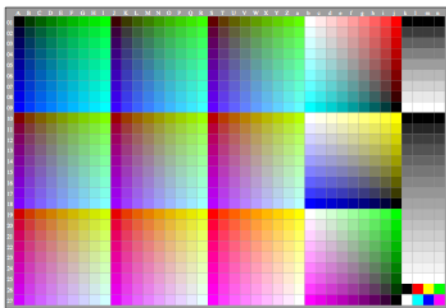
AEA60-4N, File: <http://farbe.li.tu-berlin.de/AEA6/AEA60-4N.EPS>, 1MR, gamma_{gp}=0.625, C_{Yp2}



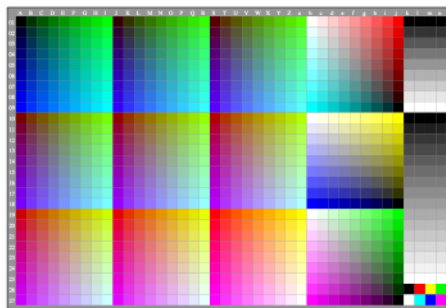
AEA61-3N, File: <http://farbe.li.tu-berlin.de/AEA6/AEA61-3N.EPS>, 1MR, gamma_{gp}=1.376, C_{Yp2}=C_{Ys2}



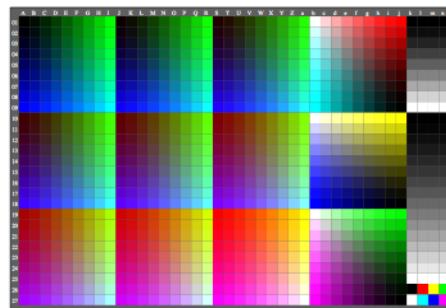
AEA61-4N, File: <http://farbe.li.tu-berlin.de/AEA6/AEA61-4N.EPS>, 1MR, gamma_{gp}=1.290, C_{Yp2}=C_{Ys2}



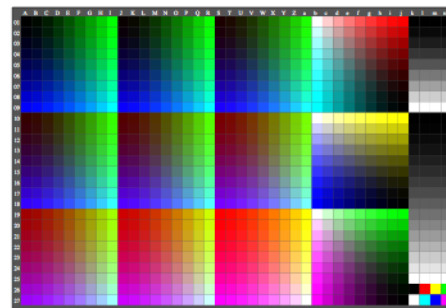
AEA60-5N, File: <http://farbe.li.tu-berlin.de/AEA6/AEA60-5N.EPS>, 1MR, gamma_{gp}=0.700, C_{Yp2}



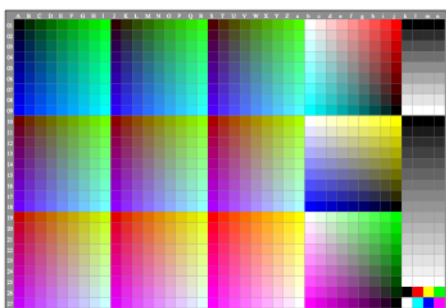
AEA60-6N, File: <http://farbe.li.tu-berlin.de/AEA6/AEA60-6N.EPS>, 1MR, gamma_{gp}=0.775, C_{Yp2}



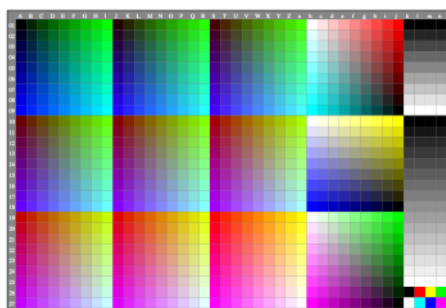
AEA61-5N, File: <http://farbe.li.tu-berlin.de/AEA6/AEA61-5N.EPS>, 1MR, gamma_{gp}=1.428, C_{Yp2}=C_{Ys2}



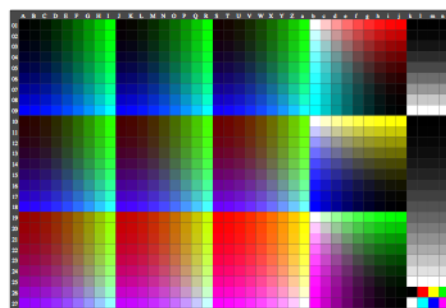
AEA61-6N, File: <http://farbe.li.tu-berlin.de/AEA6/AEA61-6N.EPS>, 1MR, gamma_{gp}=1.500, C_{Yp2}=C_{Ys2}



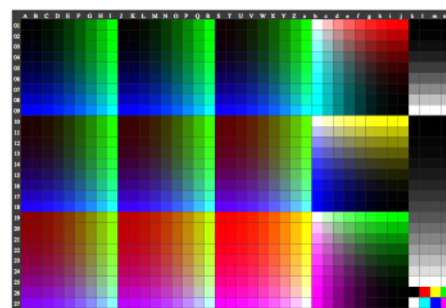
AEA60-7N, File: <http://farbe.li.tu-berlin.de/AEA6/AEA60-7N.EPS>, 1MR, gamma_{gp}=0.849, C_{Yp2}



AEA60-8N, File: <http://farbe.li.tu-berlin.de/AEA6/AEA60-8N.EPS>, 1MR, gamma_{gp}=0.924, C_{Yp2}



AEA61-7N, File: <http://farbe.li.tu-berlin.de/AEA6/AEA61-7N.EPS>, 1MR, gamma_{gp}=1.818, C_{Yp2}=C_{Ys2}



AEA61-8N, File: <http://farbe.li.tu-berlin.de/AEA6/AEA61-8N.EPS>, 1MR, gamma_{gp}=2.105, C_{Yp2}=C_{Ys2}

TUB-test chart AEA7; Frame file (VG) and figure files (PG)
 Figure pixel graphic (PG) from PDF-VG in AEA6 (600 KB)

input: w/rgb/cmyk -> rgb (1MR)
 output: 0,5 < gamma_{gp} < 2,0

TUB registration: 20200201-AEA7/AEA7L0NP.pdf /eps
 application for evaluation and measurement of display or print output

TUB material: code=rh4ta