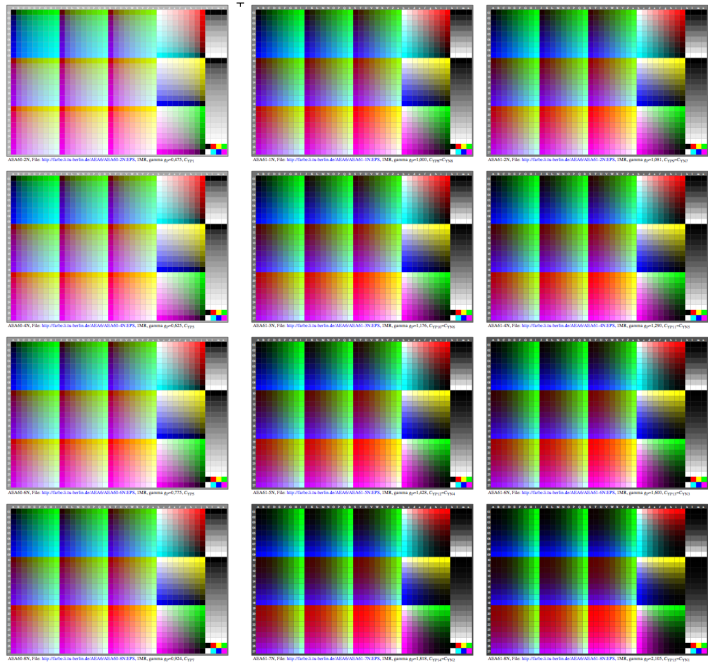


see similar files: <http://farbe.li.tu-berlin.de/AEA7/AEA7.HTM>
 technical information: <http://farbe.li.tu-berlin.de> or <http://130.149.60.45/~farbnetrik>

```

name File Package Code for 1-Minute-Relation (MR) to setrgbcolor
01 /190-Adobe-1.0 EPSF-1.0, 100 for change to setrgbcolor
02 /PPM-encoder (setrgbcolor) build def
03 /100-0000 (1000 procedure 100-0000
04 /1000-constructive of setrgbcolor to setrgbcolor
05 /setgray (1000 procedure setgray to setrgbcolor
06 dup dup PPM_setrgbcolor
07 ) def 1000 procedure setgray to setrgbcolor
08 /setrgbcolor (1000 procedure setrgbcolor to setrgbcolor
09 /PPM_w each def /PPM_y each def /PPM_w each def /PPM_x each def
10 /PPM_x eq { /PPM_x sub } /PPM_w sub } /PPM_y sub /PPM_setrgbcolor}
11 /PPM_x sub dup dup PPM_setrgbcolor /float
12 ) def 1000 procedure setrgbcolor to setrgbcolor
13 /100-0000 (1000 procedure 1000-0000
14 ) def 1000 procedure 1000-0000
15 /1000-1000-1-Minute-Relation (1000) to setrgbcolor
Example:
100-0000 message for the minimal definition of rgb setrgbcolor
The FF_PS file shall include line 02 before the use of 100-0000.
Line 04-08: Change of 4 message to rgb setrgbcolor.
Line 10 to 14: change of eq to setrgbcolor to rgb setrgbcolor.
The following code is only for changes of 1000 and gamma in:
AAEA7-N and AEA7-KN
  
```



TUB registration: 20200201-AEA7/AEA7L0N1.txt /eps
 application for evaluation and measurement of display or print output
 TUB material: code=rhatha