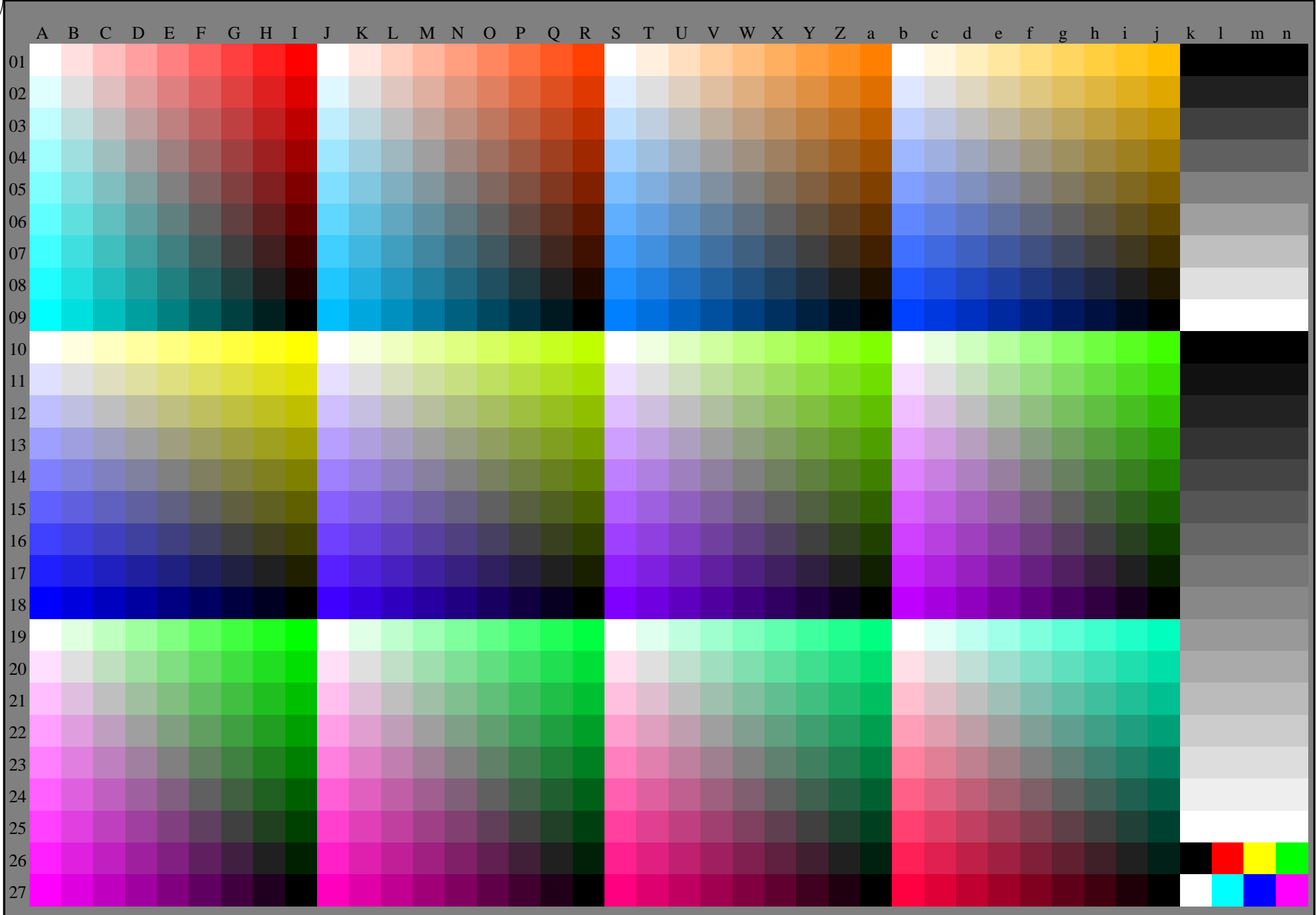


see similar files: <http://farbe.li.tu-berlin.de/AE59/AE59L1NA.TXT> / .PS  
technical information: <http://farbe.li.tu-berlin.de/AE59/AE59L1NA.TXT> / .PS  
or <http://farbe.li.tu-berlin.de/AE59/AE59L1NA.TXT> / .PS  
or <http://farbe.li.tu-berlin.de/AE59/AE59L1NA.TXT> / .PS

TUB Registration: 20190301-AE59/AE59L1NA.TXT /.PS  
application for measurement or viewing of display and print output  
TUB material: code=rh4ta



AE590-70

Test chart AE59 with 1080 colours; 9 or 16 step colour scales; data in column (A-n): **rgb + cmy0 (A-j + k26-n27), 000n (k), w (l), nnn0 (m), www (n)**

1-003000-L0 cmyn6

Test chart AE59 similar to test chart 1 of DIN 33872-6  
9x9 scales; 12 hue planes; 16 visual equidistant  $L^*$ -grey steps

input: `rgb/cmy0/000n/w set...`  
output: `->rgbdd setrgbcolor`

