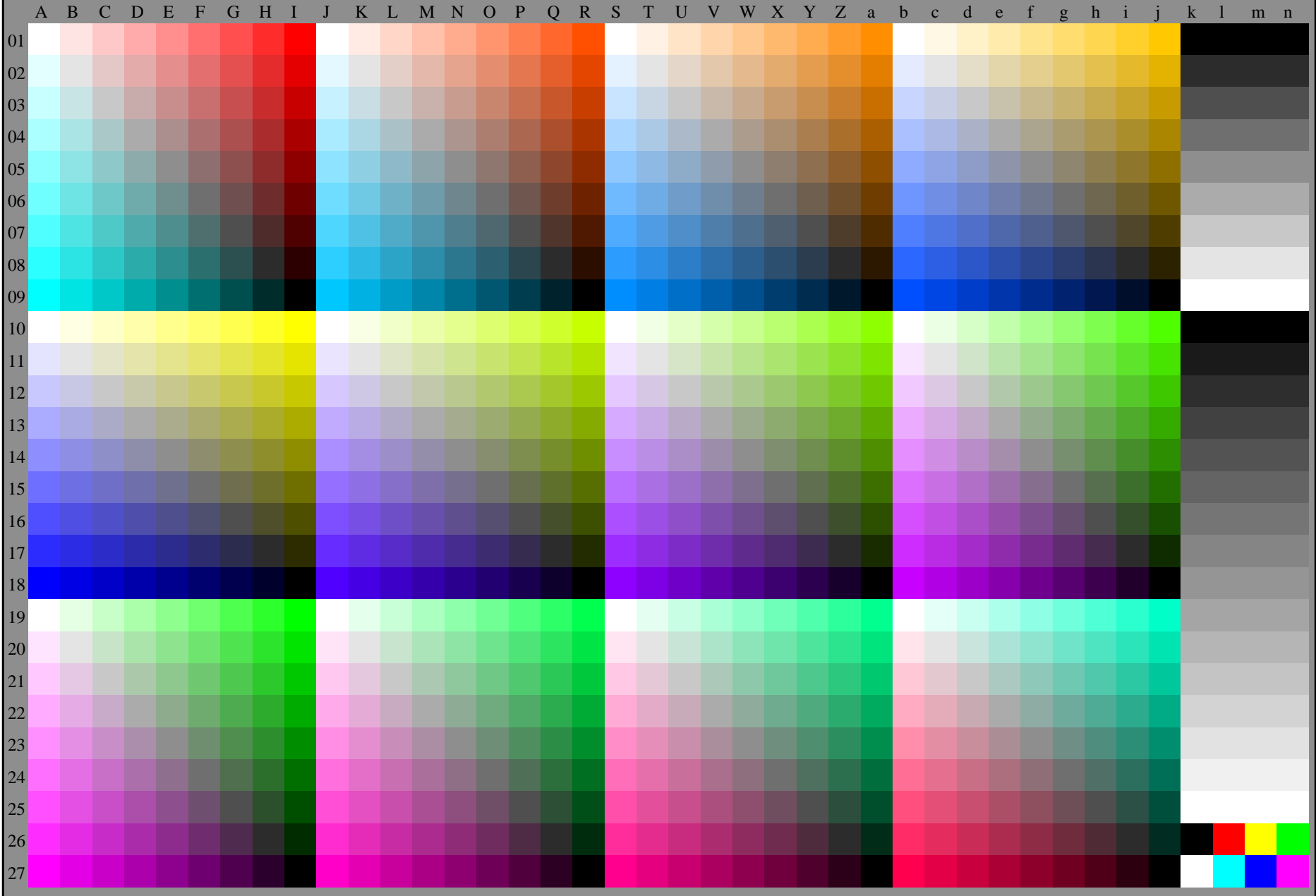


see similar files: <http://farbe.li.tu-berlin.de/AE59/AE59L0FA.TXT /.PS>
technical information: <http://farbe.li.tu-berlin.de/AE59/AE59.HTM>
or <http://farbe.li.tu-berlin.de/AE.HTM>

TUB Registration: 20190301-AE59/AE59L0FA.TXT /.PS
application for measurement or viewing of display and print output
TUB material: code=rhata



AE590-70 Test chart AE59 with 1080 colours; 9 or 16 step colour scales; data in column (A-n): $rgb + cmy0(A-j + k26-n27), 000n(k), w(l), nnn0(m), www(n)$ 1-100000-L0 $cmyn6^*$

Test chart AE59 similar to test chart 1 of DIN 33872-6
9x9 scales; 12 hue planes; 16 visual equidistant L^* -grey steps

input: $rgb/cmy0/000n/w$ set...
output: $->rgb_{dd} setrgbcolor$