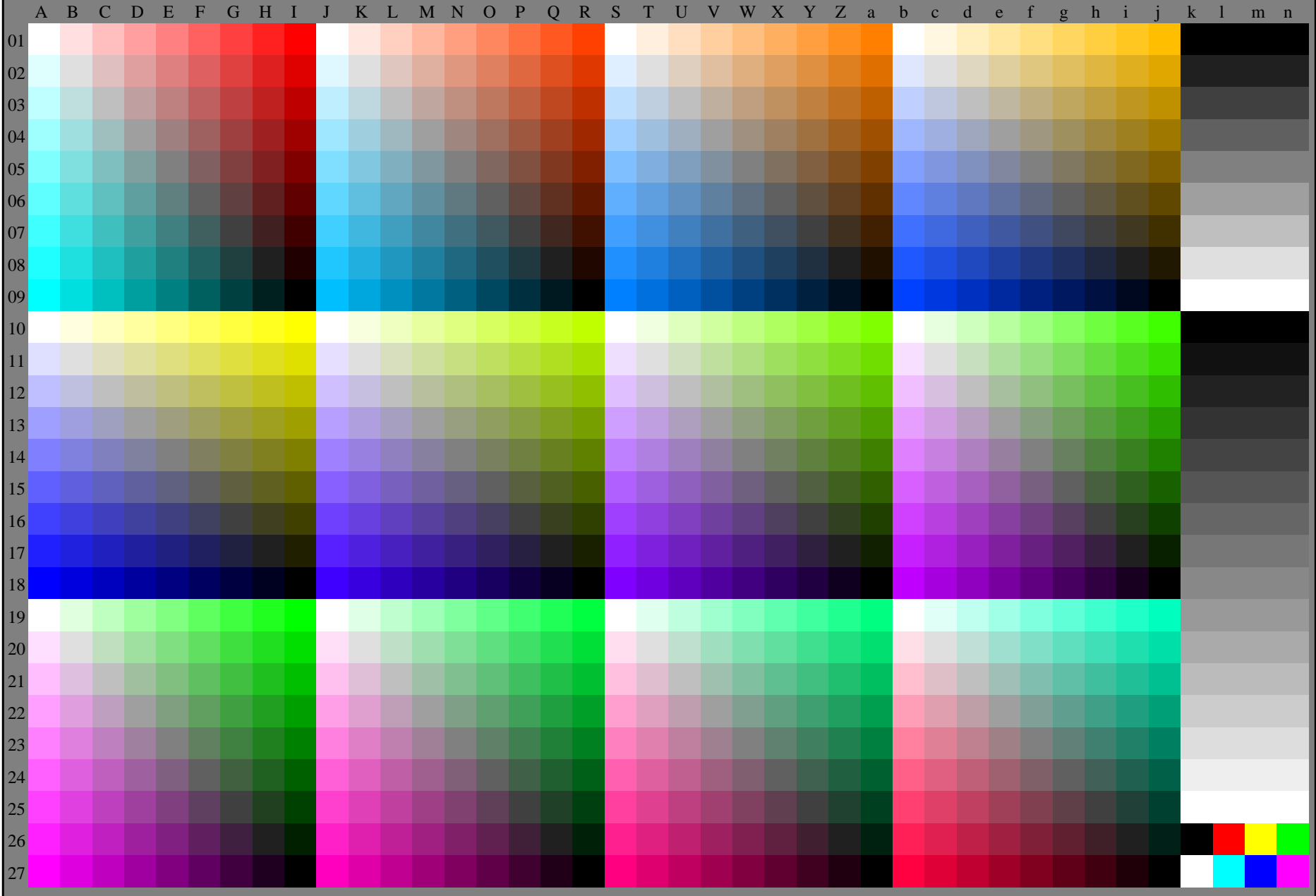


see similar files: <http://farbe.li.tu-berlin.de/AE59/AE59L0FA.TXT> / .PS
technical information: <http://farbe.li.tu-berlin.de/AE59/AE59.HTM>
or <http://farbe.li.tu-berlin.de/AE.HTM>

TUB Registration: 20190301-AE59/AE59L0FA.TXT / .PS
application for measurement or viewing of display and print output
TUB material: code=rhata



AE590-70 Test chart AE59 with 1080 colours; 9 or 16 step colour scales; data in column (A-n): **rgb + cmy0 (A-j + k26-n27), 000n (k), w (l), nnn0 (m), www (n)** 1-100000-L0 cmy_n6*

Test chart AE59 similar to test chart 1 of DIN 33872-6
9x9 scales; 12 hue planes; 16 visual equidistant L*-grey steps
input: *rgb/cmy0/000n/w set...*
output: *->rgb_{dd} setrgbcolor*