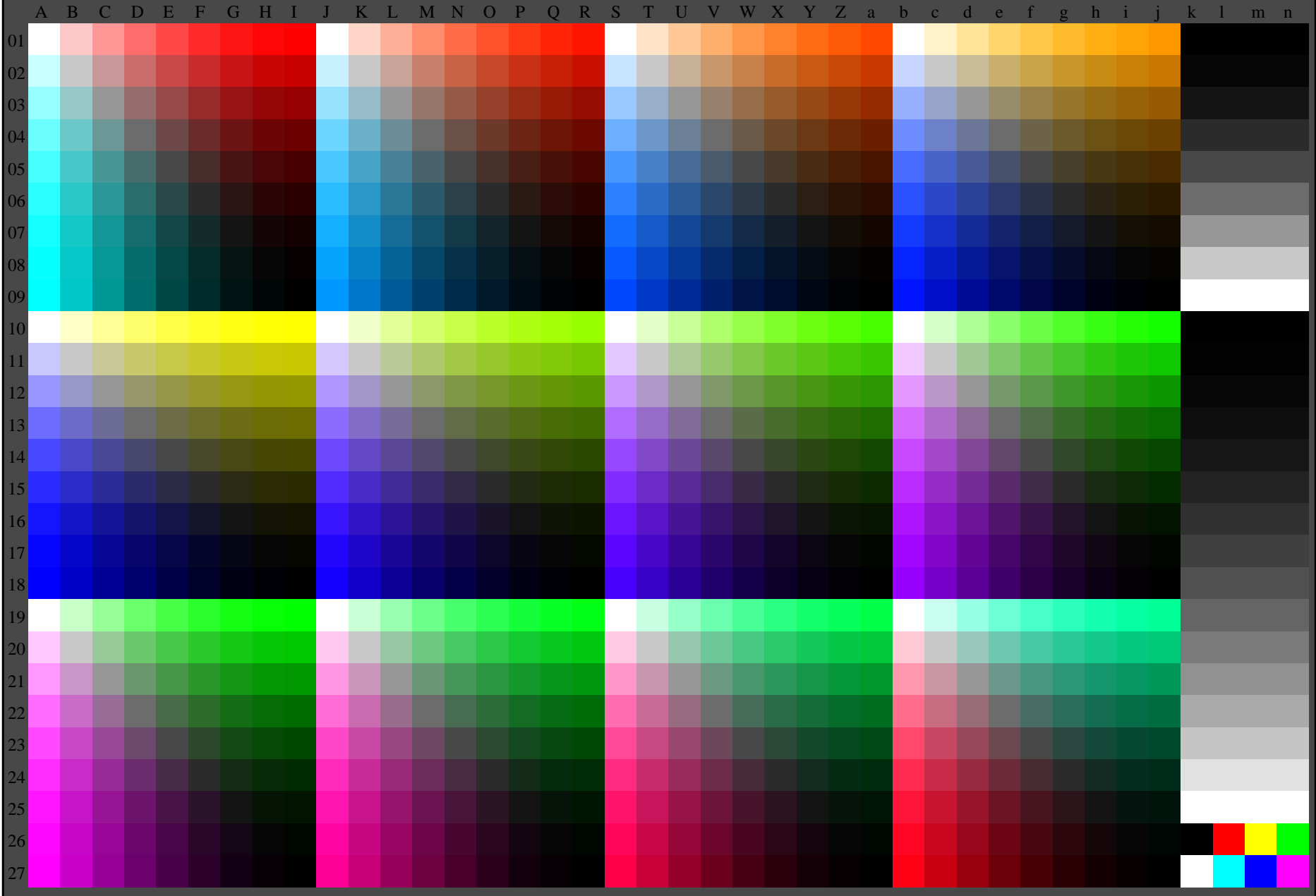


see similar files: <http://farbe.li.tu-berlin.de/AE59/AE59L0FA.TXT> / .PS  
technical information: <http://farbe.li.tu-berlin.de/AE59/AE59.HTM>  
or <http://farbe.li.tu-berlin.de/AE.HTM>

TUB Registration: 20190301-AE59/AE59L0FA.TXT / .PS  
application for measurement or viewing of display and print output  
TUB material: code=rhata



AE590-70 Test chart AE59 with 1080 colours; 9 or 16 step colour scales; data in column (A-n):  $rgb + cmy0(A-j + k26-n27), 000n(k), w(l), nnn0(m), www(n)$   
Test chart AE59 similar to test chart 1 of DIN 33872-6  
9x9 scales; 12 hue planes; 16 visual equidistant  $L^*$ -grey steps  
input:  $rgb/cmy0/000n/w$  set...  
output:  $->rgb_{dd} setrgbcolor$   
1-100000-L0  $cmy_n6^*$