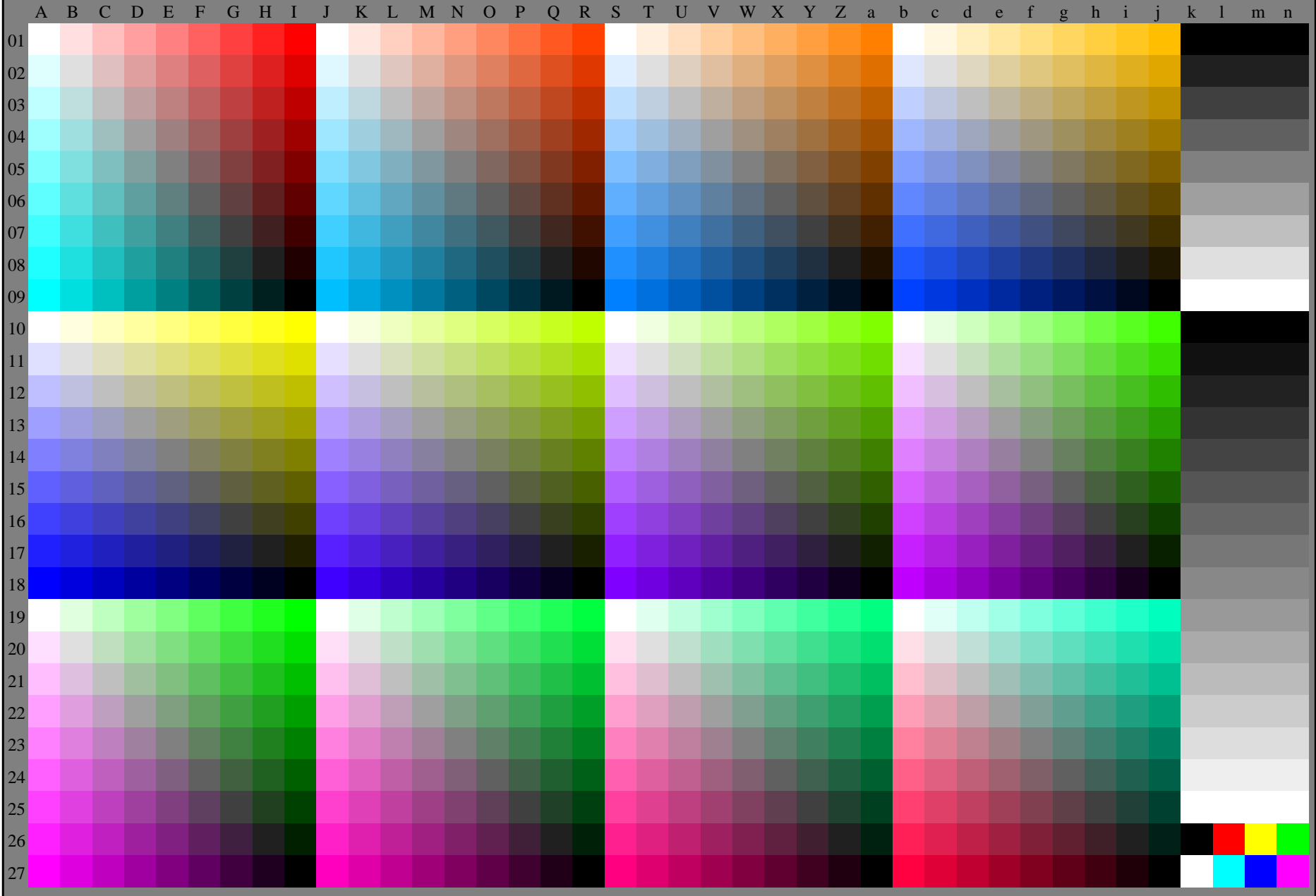
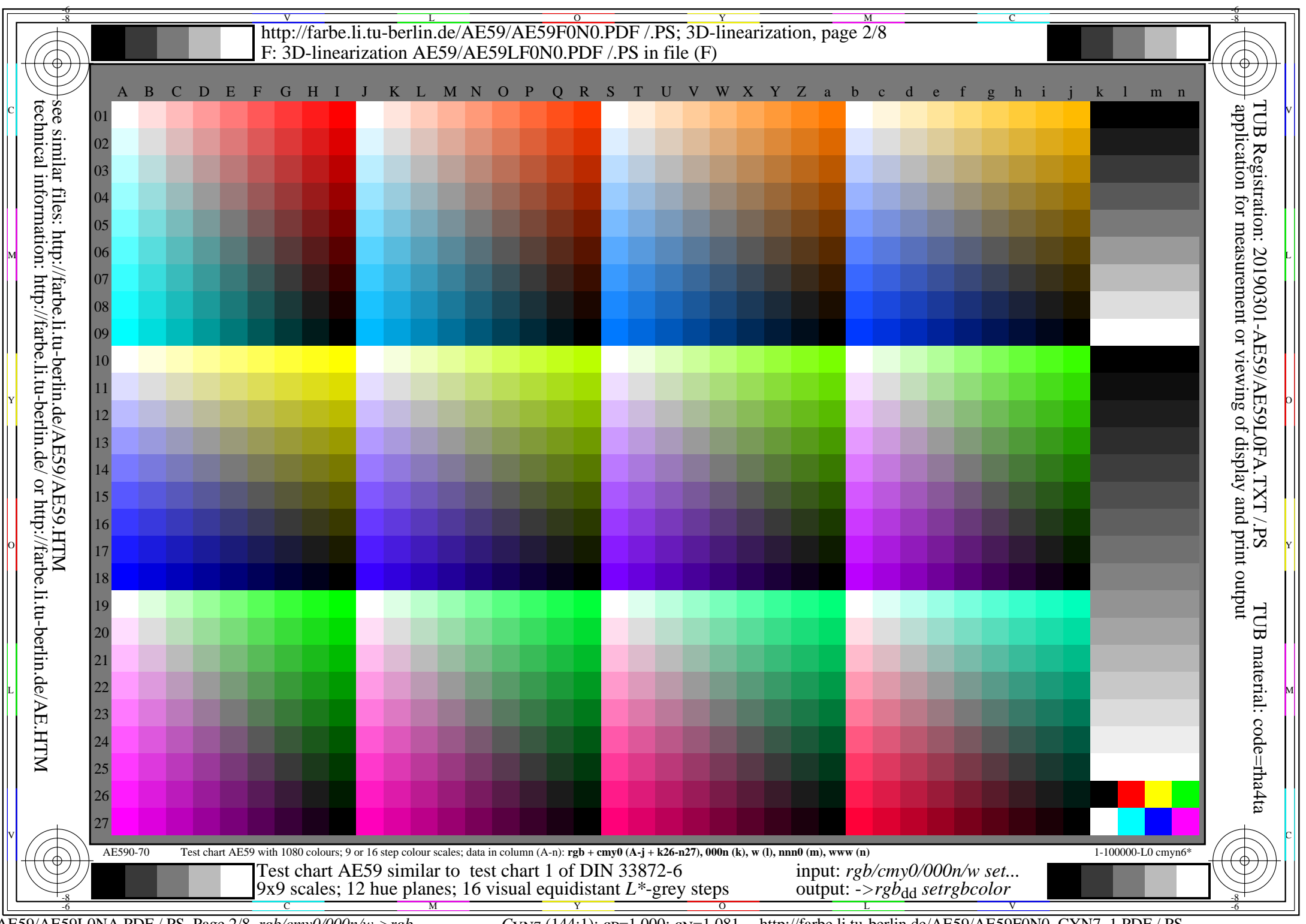


see similar files: <http://farbe.li.tu-berlin.de/AE59/AE59L0FA.TXT /.PS>  
technical information: <http://farbe.li.tu-berlin.de/AE59/AE59.HTM>  
or <http://farbe.li.tu-berlin.de/AE.HTM>

TUB Registration: 20190301-AE59/AE59L0FA.TXT /.PS  
application for measurement or viewing of display and print output  
TUB material: code=rhata



AE590-70 Test chart AE59 with 1080 colours; 9 or 16 step colour scales; data in column (A-n): **rgb + cmy0 (A-j + k26-n27), 000n (k), w (l), nnn0 (m), www (n)**  
Test chart AE59 similar to test chart 1 of DIN 33872-6  
9x9 scales; 12 hue planes; 16 visual equidistant L\*-grey steps  
input: *rgb/cmy0/000n/w set...*  
output: *->rgb<sub>dd</sub> setrgbcolor*  
1-100000-L0 cmy<sub>n</sub>6\*



see similar files: <http://farbe.li.tu-berlin.de/AE59/AE59L0FA.TXT/.PS>  
technical information: <http://farbe.li.tu-berlin.de/AE59/AE59.HTM> or <http://farbe.li.tu-berlin.de/AE.HTM>

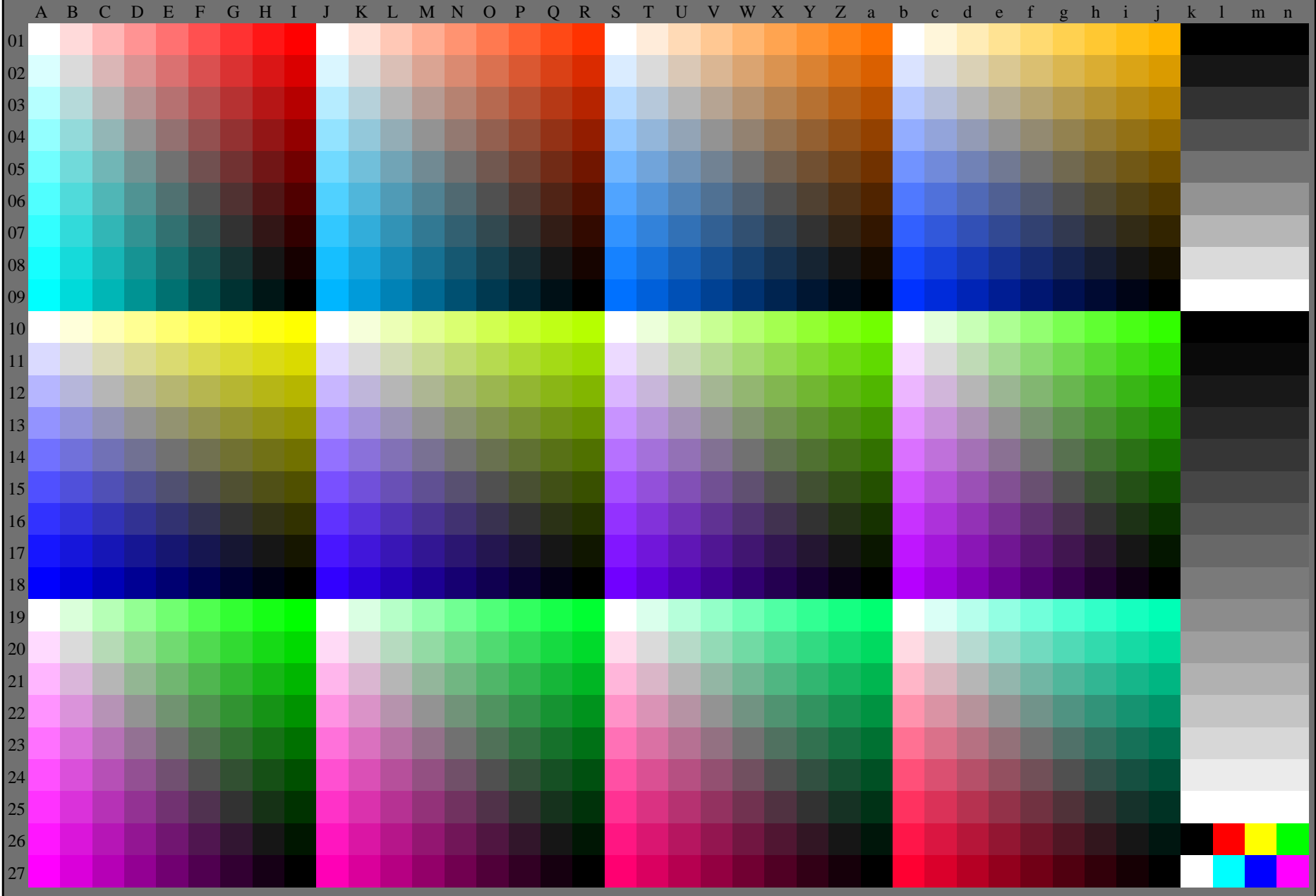
TUB Registration: 20190301-AE59/AE59L0FA.TXT/.PS  
application for measurement or viewing of display and print output  
TUB material: code=rhata

AE590-70 Test chart AE59 with 1080 colours; 9 or 16 step colour scales; data in column (A-n): **rgb + cmy0 (A-j + k26-n27), 000n (k), w (l), nnn0 (m), www (n)** 1-100000-L0 cmy<sub>n</sub>6\*

Test chart AE59 similar to test chart 1 of DIN 33872-6  
9x9 scales; 12 hue planes; 16 visual equidistant L\*-grey steps  
input: *rgb/cmy0/000n/w set...*  
output: *->rgb<sub>dd</sub> setrgbcolor*

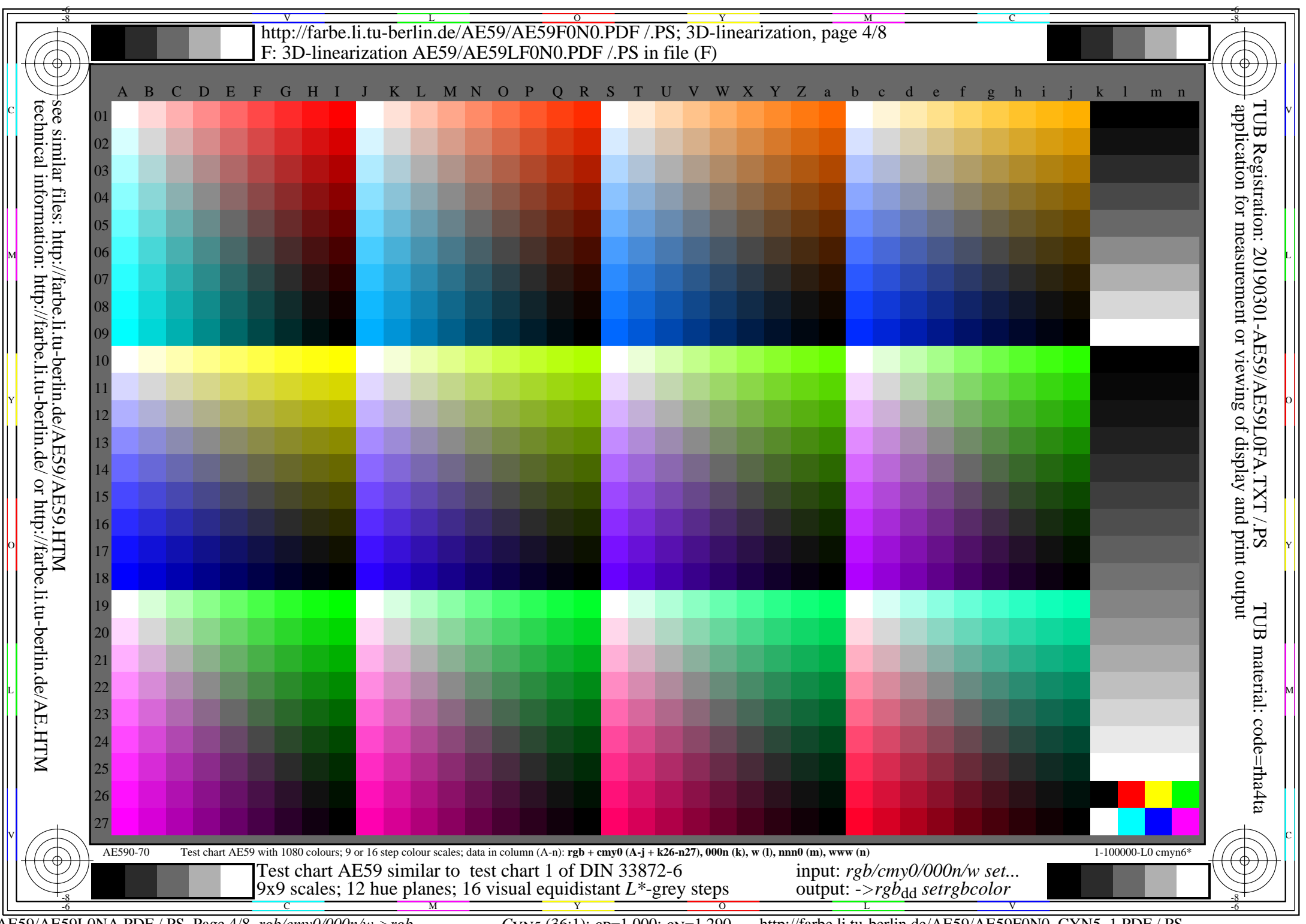
see similar files: <http://farbe.li.tu-berlin.de/AE59/AE59L0FA.TXT /.PS>  
technical information: <http://farbe.li.tu-berlin.de/AE59/AE59.HTM> or <http://farbe.li.tu-berlin.de/AE.HTM>

TUB Registration: 20190301-AE59/AE59L0FA.TXT /.PS  
application for measurement or viewing of display and print output  
TUB material: code=rhata



AE590-70 Test chart AE59 with 1080 colours; 9 or 16 step colour scales; data in column (A-n): **rgb + cmy0 (A-j + k26-n27), 000n (k), w (l), nnn0 (m), www (n)** 1-100000-L0 cmy<sub>n</sub>6\*

Test chart AE59 similar to test chart 1 of DIN 33872-6  
9x9 scales; 12 hue planes; 16 visual equidistant L\*-grey steps  
input: *rgb/cmy0/000n/w set...*  
output: *->rgb<sub>dd</sub> setrgbcolor*



see similar files: <http://farbe.li.tu-berlin.de/AE59/AE59L0FA.TXT> / .PS  
technical information: <http://farbe.li.tu-berlin.de/AE59/AE59.HTM>  
or <http://farbe.li.tu-berlin.de/AE.HTM>

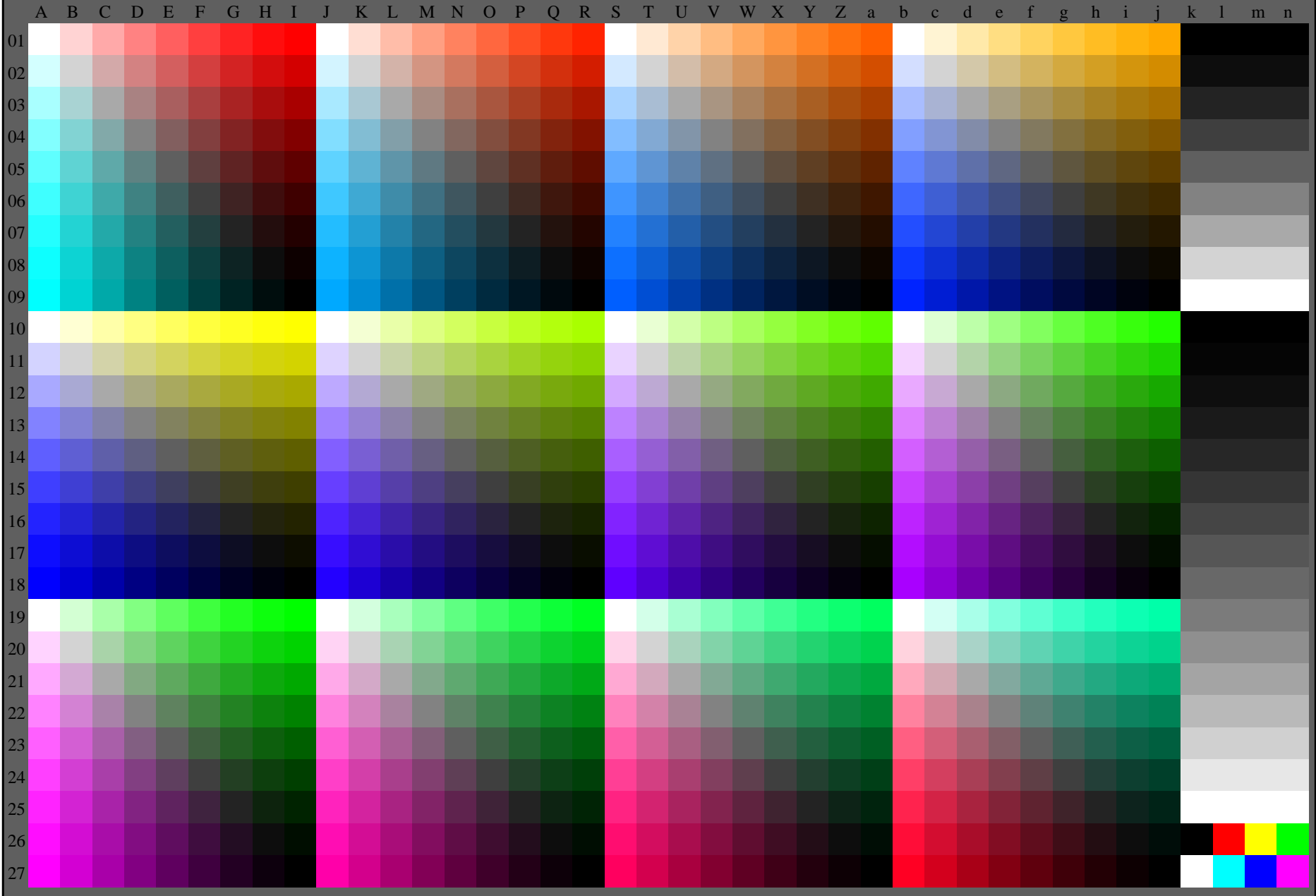
TUB Registration: 20190301-AE59/AE59L0FA.TXT / .PS  
application for measurement or viewing of display and print output  
TUB material: code=rhata4ta

AE590-70 Test chart AE59 with 1080 colours; 9 or 16 step colour scales; data in column (A-n): **rgb + cmy0 (A-j + k26-n27), 000n (k), w (l), nnn0 (m), www (n)** 1-100000-L0 cmy<sub>n</sub>6\*

Test chart AE59 similar to test chart 1 of DIN 33872-6  
9x9 scales; 12 hue planes; 16 visual equidistant L\*-grey steps  
input: *rgb/cmy0/000n/w set...*  
output: *->rgb<sub>dd</sub> setrgbcolor*

see similar files: <http://farbe.li.tu-berlin.de/AE59/AE59L0FA.TXT/.PS>  
technical information: <http://farbe.li.tu-berlin.de/AE59/AE59.HTM> or <http://farbe.li.tu-berlin.de/AE.HTM>

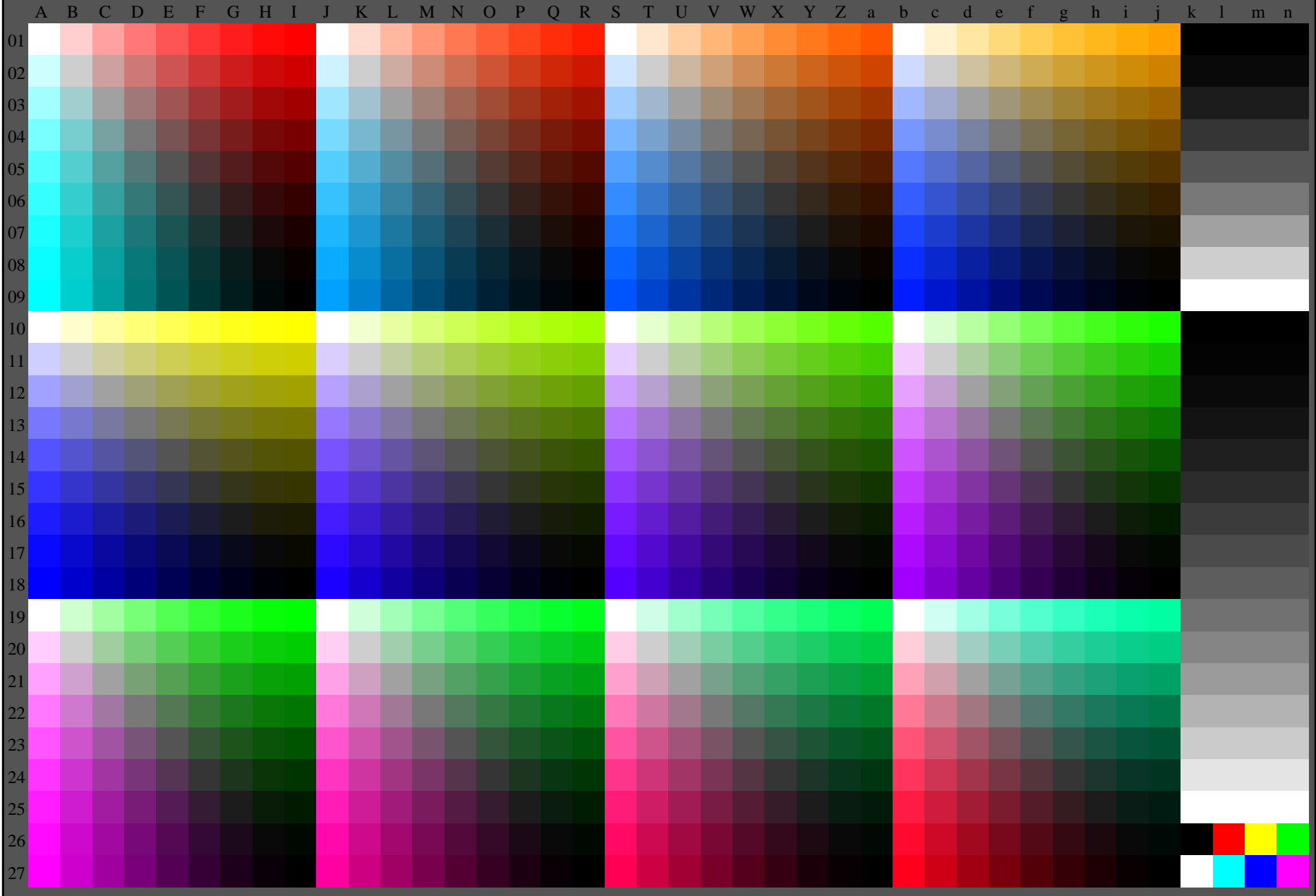
TUB Registration: 20190301-AE59/AE59L0FA.TXT/.PS  
application for measurement or viewing of display and print output  
TUB material: code=rhata



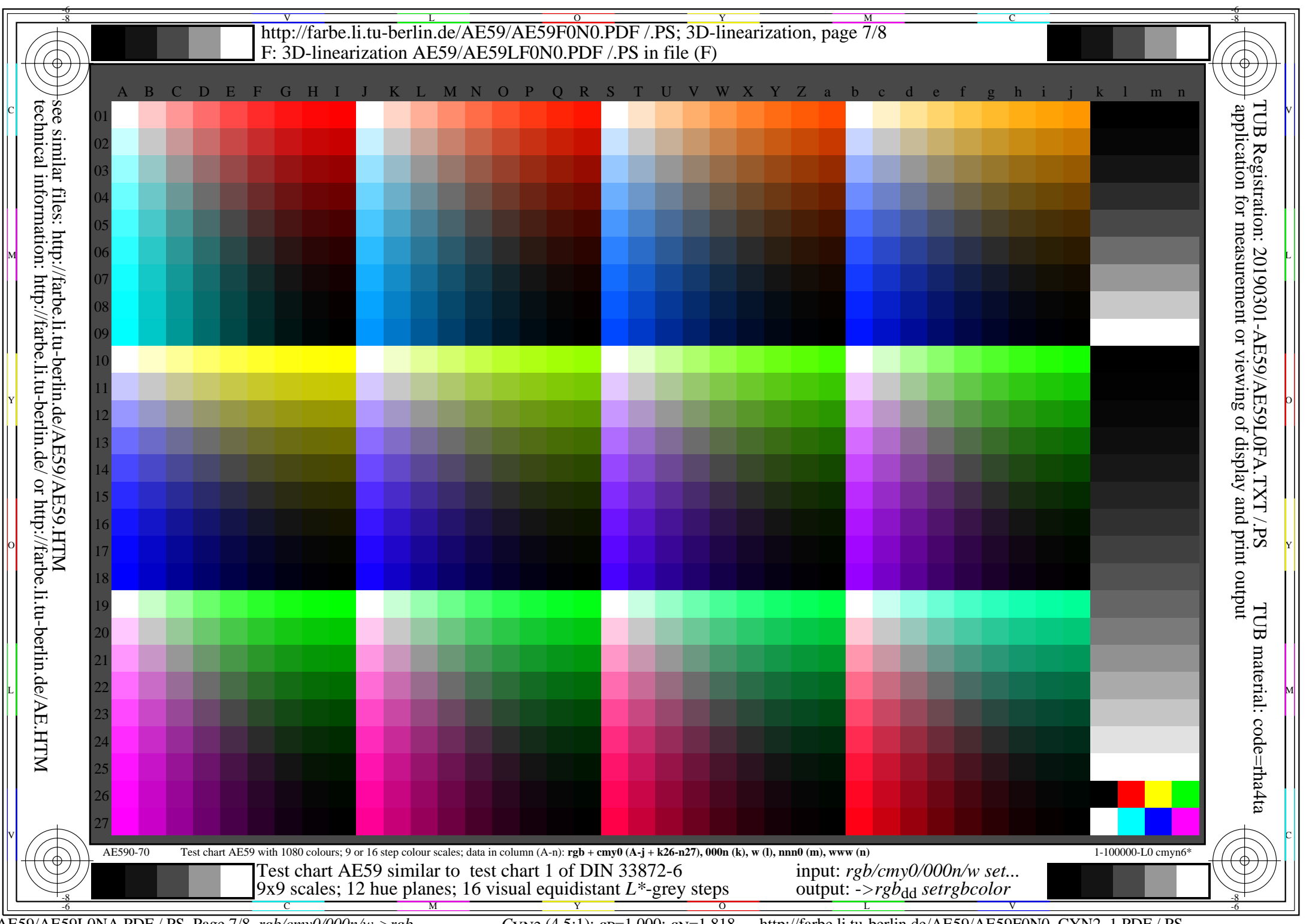
AE590-70 Test chart AE59 with 1080 colours; 9 or 16 step colour scales; data in column (A-n): **rgb + cmy0 (A-j + k26-n27), 000n (k), w (l), nnn0 (m), www (n)**  
Test chart AE59 similar to test chart 1 of DIN 33872-6  
9x9 scales; 12 hue planes; 16 visual equidistant  $L^*$ -grey steps  
input: *rgb/cmy0/000n/w set...*  
output: *->rgb<sub>dd</sub> setrgbcolor*  
1-100000-L0 cmy<sub>n</sub>6\*

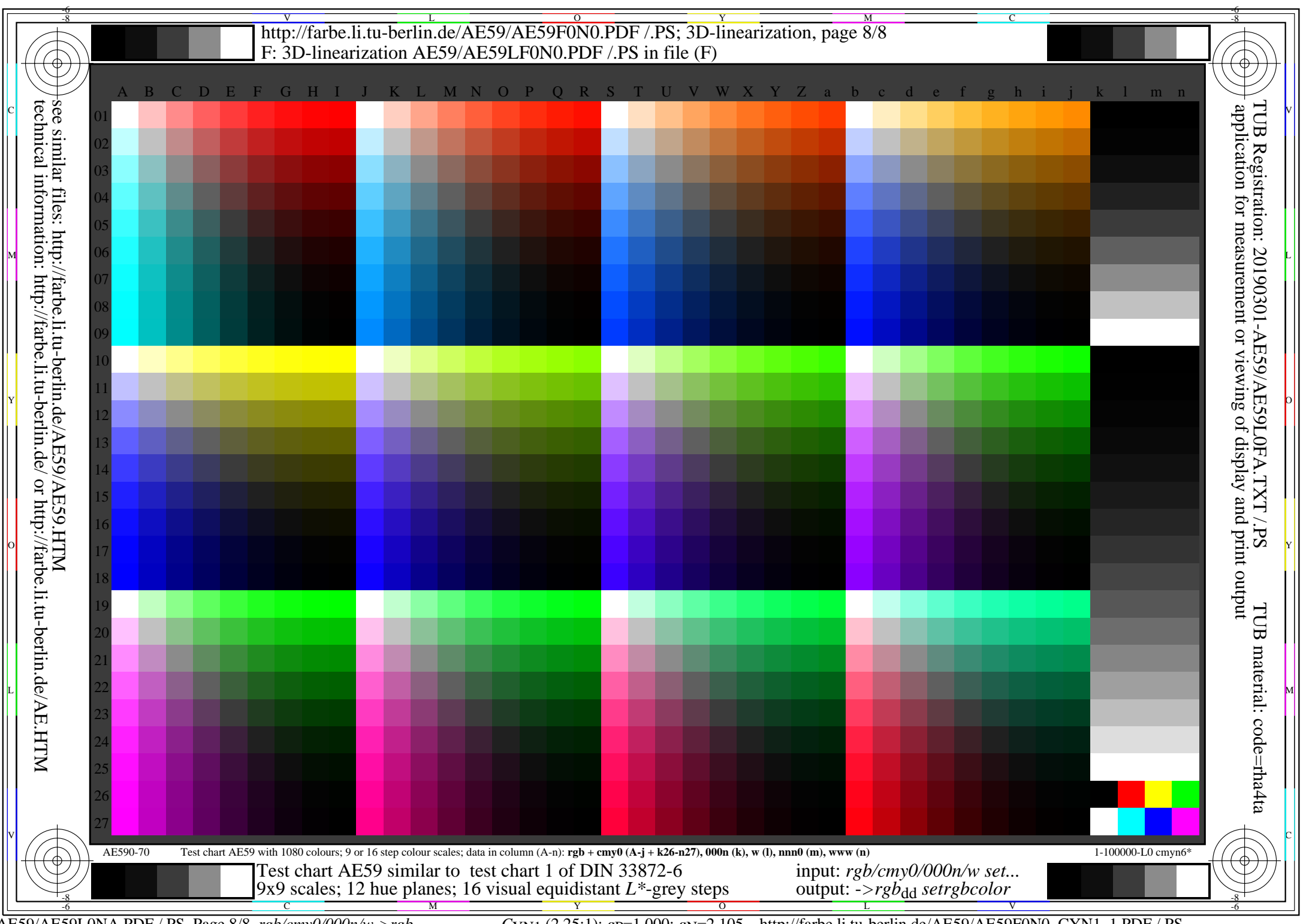
see similar files: <http://farbe.li.tu-berlin.de/AE59/AE59L0FA.TXT/.PS>  
technical information: <http://farbe.li.tu-berlin.de/AE59/AE59.HTM>  
or <http://farbe.li.tu-berlin.de/AE.HTM>

TUB Registration: 20190301-AE59/AE59L0FA.TXT/.PS  
application for measurement or viewing of display and print output  
TUB material: code=rhata4ta



AE590-70 Test chart AE59 with 1080 colours; 9 or 16 step colour scales; data in column (A-n): **rgb + cmy0 (A-j + k26-n27), 000n (k), w (l), nnn0 (m), www (n)**  
Test chart AE59 similar to test chart 1 of DIN 33872-6  
9x9 scales; 12 hue planes; 16 visual equidistant L\*-grey steps  
input: *rgb/cmy0/000n/w set...*  
output: *->rgb<sub>dd</sub> setrgbcolor*  
1-100000-L0 cmy<sub>n</sub>6\*





see similar files: <http://farbe.li.tu-berlin.de/AE59/AE59L0FA.TXT/.PS>  
technical information: <http://farbe.li.tu-berlin.de/AE59/AE59.HTM> or <http://farbe.li.tu-berlin.de/AE.HTM>

TUB Registration: 20190301-AE59/AE59L0FA.TXT/.PS  
application for measurement or viewing of display and print output  
TUB material: code=rhata4ta

AE590-70 Test chart AE59 with 1080 colours; 9 or 16 step colour scales; data in column (A-n): **rgb + cmy0 (A-j + k26-n27), 000n (k), w (l), nnn0 (m), www (n)** 1-100000-L0 cmy<sub>6</sub>\*

Test chart AE59 similar to test chart 1 of DIN 33872-6  
9x9 scales; 12 hue planes; 16 visual equidistant L\*-grey steps  
input: *rgb/cmy0/000n/w set...*  
output: *->rgb<sub>dd</sub> setrgbcolor*