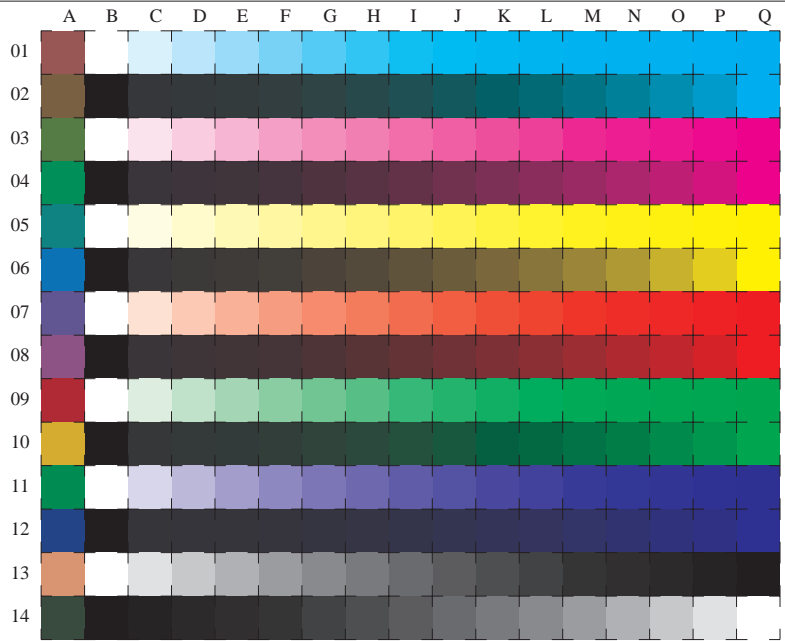


See for similar files: <http://www.ps.bam.de/ME20/ME20.HTM>
 Information and Order: <http://www.ps.bam.de> Version 2.0, io=0, iORS, oORS, CIELAB



used coordinate squares

C $c000^\circ$

$1my0^\circ$

$0m00^\circ$

M $c1y0^\circ$

$00y0^\circ$

Y $cm10^\circ$

$0my0^\circ$

O $c110^\circ$

$c0y0^\circ$

L $1m10^\circ$

$cm00^\circ$

V $11y0^\circ$

$cm0^\circ$

N/W $000n^\circ$

16 equidistant CIELAB steps: C-W, C-N, M-W, M-N, Y-W, Y-N, O-W, O-N, L-W, L-N, V-W, V-N, N-W (CMY), W-N and 14 CIE-test colours (left)

Test chart ME20: 16 CIELAB steps of ISO/IEC 15775 input(ORS18): $cmyn^* setcmykcolor$
 Chromatic-White, Chromatic-Black, Black-White output(ORS18): $cm0^*/000n^* setcmykcolor$

BAM registration: 20050101-ME20/10S/S20E00F2.PS/.TXT BAM material: code=thata
 application for measurement of monitor (Y1=2,5) and printer output