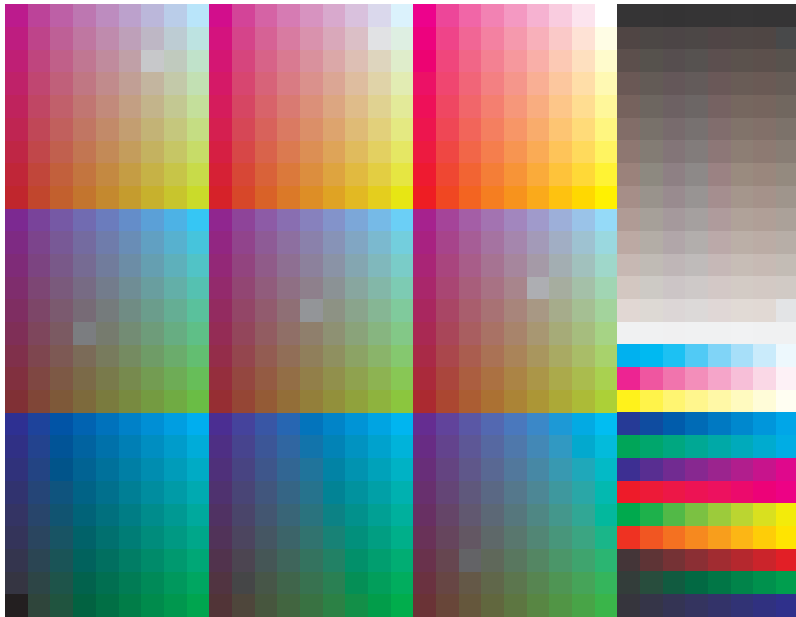


See for similar files: <http://www.ps.bam.de/ME20/ME20.HTM>
Information and Order: <http://www.ps.bam.de> Version 2.0, io=0, iORS; oORS, CIELAB

BAM registration: 20050101-ME20/L20E00F1.PS/.TXT
application for measurement of monitor (Y1=2.5) and printer output

BAM material: code=thata



9x9x9 colour cube and colour tinted grey scales, hue circle with maximum chromaticness and $W-CMY, OLV-N$

Test chart ME20: 9x9x9 colour cube and grey scales
Hue circle and colour series $W-CMY, OLV-N$

input(ORS18): $cmy^n * setcmycolor$
output(ORS18): $cmy0^n / 000n * setcmycolor$

