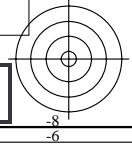
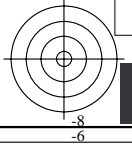
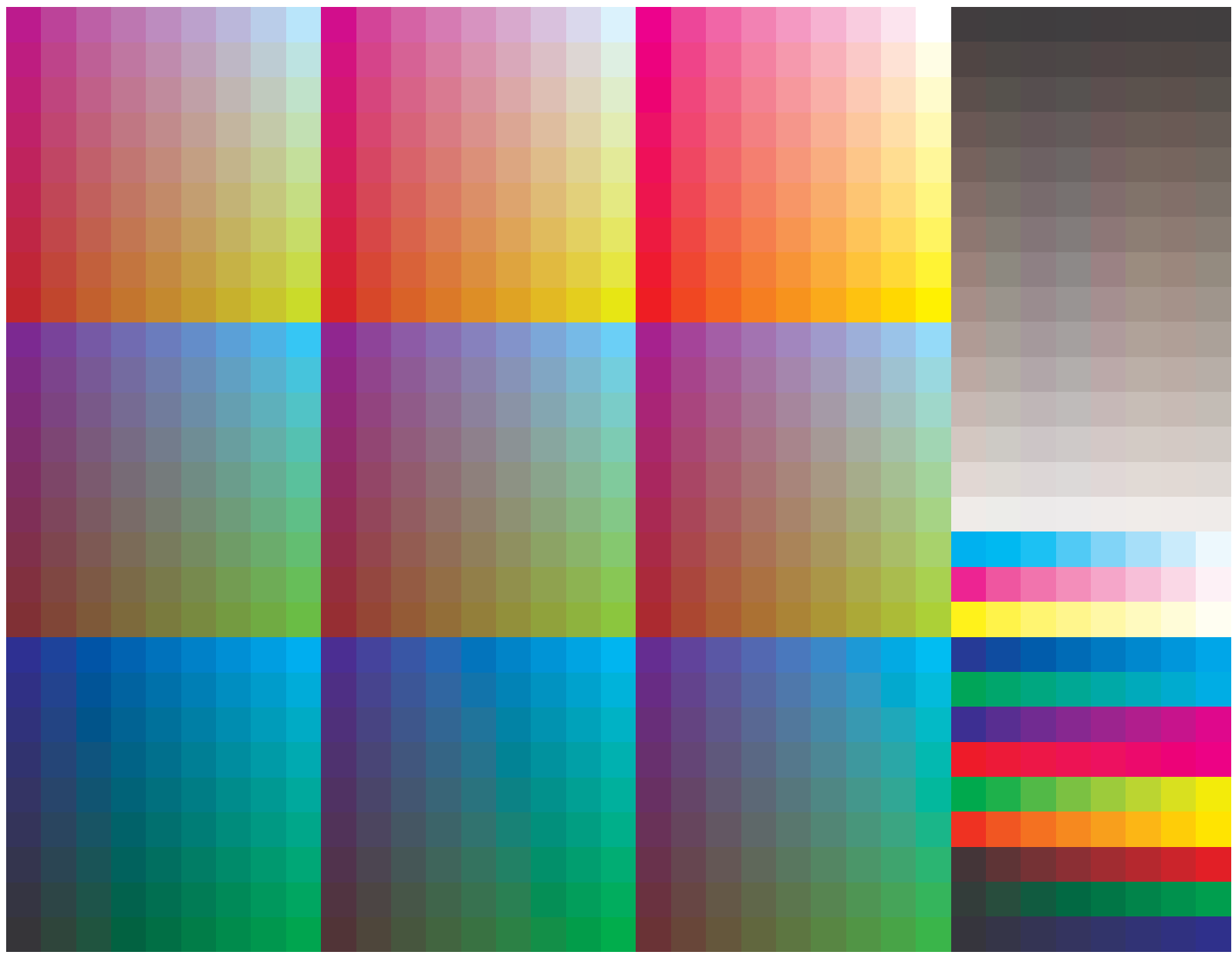
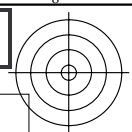
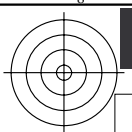


See for similar files: <http://www.ps.bam.de/ME20/ME20.HTM>  
Information and Order: <http://www.ps.bam.de> Version 2.0, io=0,0?

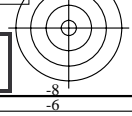
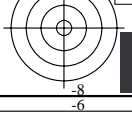
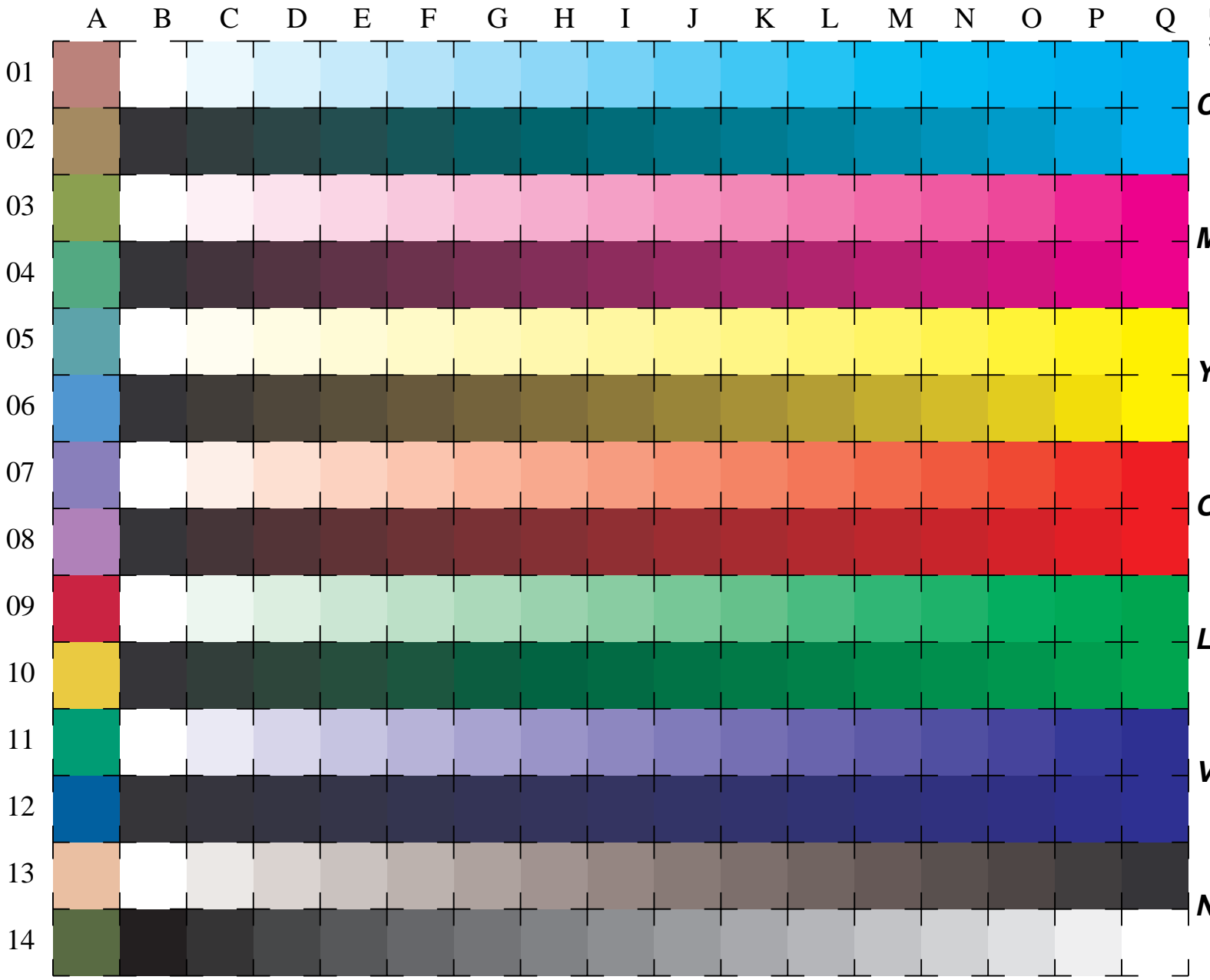
BAM registration: 20050101-ME20/10L/L20E00SP.PS/.PDF BAM material: code=th4ta  
application for measurement of monitor (Yr=2.5) and printer output





See for similar files: <http://www.ps.bam.de/ME20/ME20.HTM>  
 Information and Order: <http://www.ps.bam.de> Version 2.0, io=0,0?

BAM registration: 20050101-ME20/10L/L20E01SP.PS/.PDF BAM material: code=tha4ta  
 application for measurement of monitor (Yr=2.5) and printer output

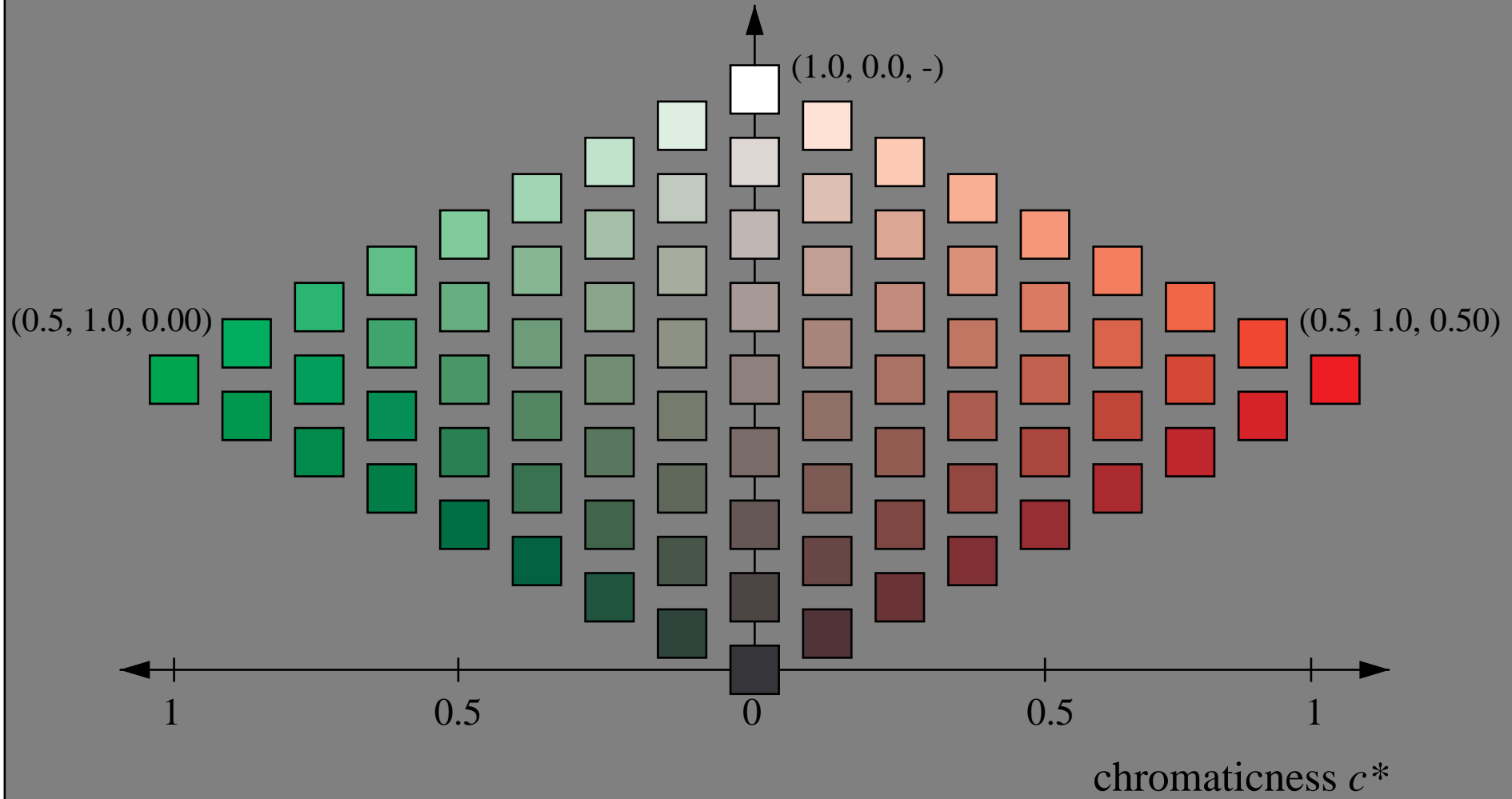


16 equidistant CIELAB steps: C-W, C-N, M-W, M-N, Y-W, Y-N, O-W, O-N, L-W, L-N, V-W, V-N, N-W (CMY), W-N and 14 CIE-test colours (left)



# Colorimetric System *lab\*tch*

triangle lightness  $t^*$



See for similar files: <http://www.ps.bam.de/ME20/ME20.HTM>  
Information and Order: <http://www.ps.bam.de> Version 2.0, io=0,0?

BAM registration: 20050101-ME20/10L/L20E02SP.PS/.PDF BAM material: code=tha4ta  
application for measurement of monitor (Yr=2.5) and printer output

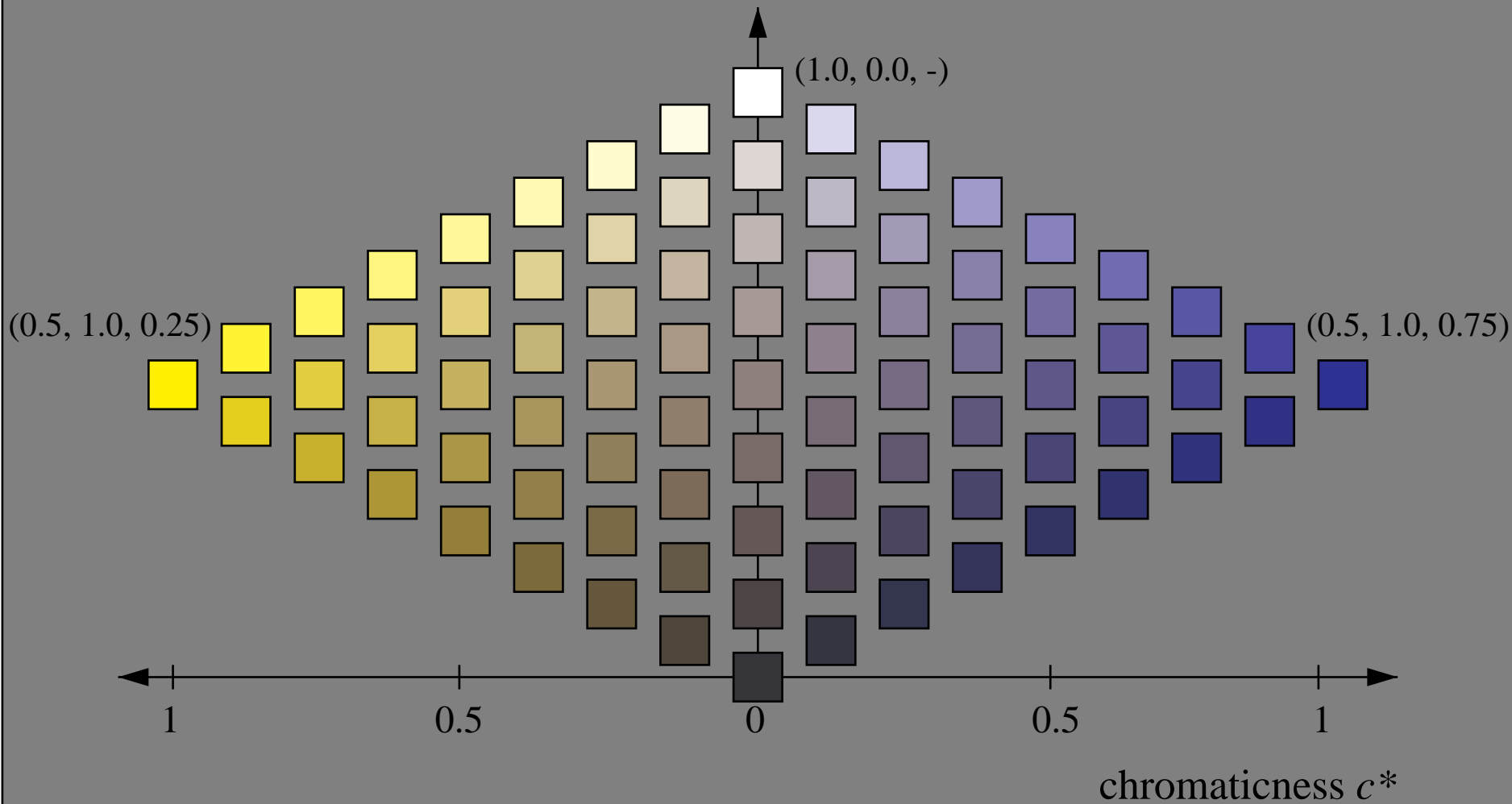
Colorimetric System: *lab\*tch*, 9 steps scales for red-green hue

Test chart ME20: Colorimetric System *lab\*tch*  
9 steps scales for red-green hue

input(ORS18): *cmyn\* setcmykcolor*  
output(ORS18): *Startup (S) data dependend*

# Colorimetric System *lab\*tch*

triangle lightness  $t^*$



See for similar files: <http://www.ps.bam.de/ME20/ME20.HTM>  
Information and Order: <http://www.ps.bam.de> Version 2.0, io=0,0?

BAM registration: 20050101-ME20/10L/L20E03SP.PS/.PDF BAM material: code=tha4ta  
application for measurement of monitor (Yr=2.5) and printer output

Colorimetric System: *lab\*tch*, 9 steps scales for yellow-blue hue

Test chart ME20: Colorimetric System *lab\*tch*  
9 steps scales for blue-yellow hue

input(ORS18): *cmyn\* setcmykcolor*  
output(ORS18): *Startup (S) data dependend*