

Bildpixel: **192 x 128**  
 384 x 256  
 768 x 512  
 1536 x 1024  
 3072 x 2048



Bild B1: Blumenmotiv, 14 CIE-Prüfbarben sowie 2 + 16 Graustufen (sf); PS-Operatoren *settransfer*, *4 colorimage*

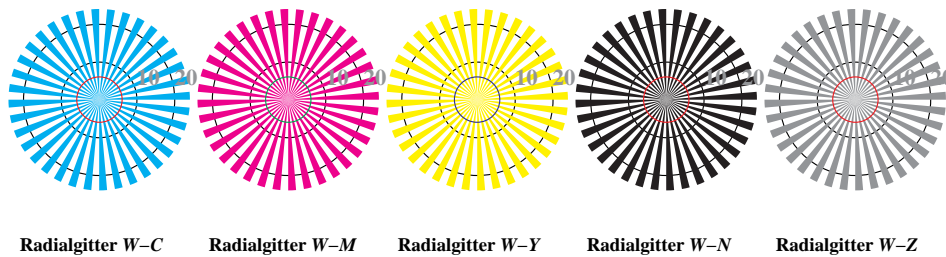


Bild B2: Radialgitter *W-C*, *W-M*, *W-Y*, *W-N* und *W-Z*; PS-Operator *cmY0\*/000n\* setcmYcolor*

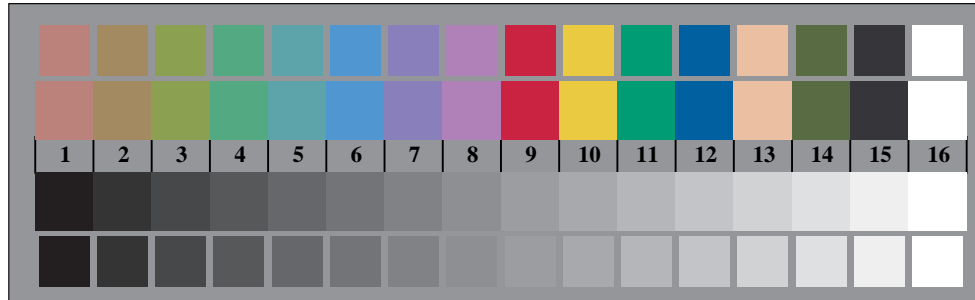


Bild B3: 14 CIE-Prüfbarben sowie 2 + 16 Graustufen; PS-operator *cmY0\*/000n\* setcmYcolor*

Fig. B1 bis B7; ISO/IEC-Prüfvorlage 2; ISO/IEC 15775 und input: *cmY0\*/000n\* setcmYcolor*  
 DIS ISO/IEC 19839-X; output: *Startup (S) data dependend*

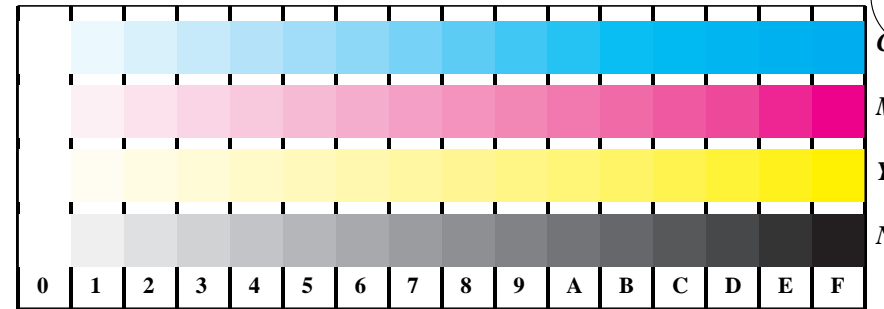


Bild B4: 16 gleichabständige Stufen *W-C*, *W-M*, *W-Y* und *W-N*; PS-Operator *cmY0\*/000n\* setcmYcolor*

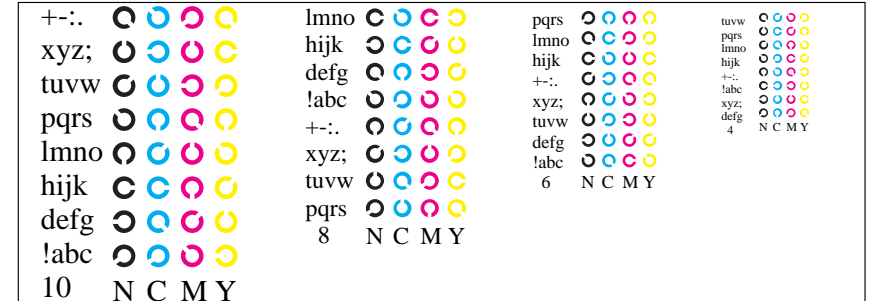


Bild B5: Schrift und Landoltringe *N*, *M*, *C* und *Y*; PS-Operator *cmY0\*/000n\* setcmYcolor*

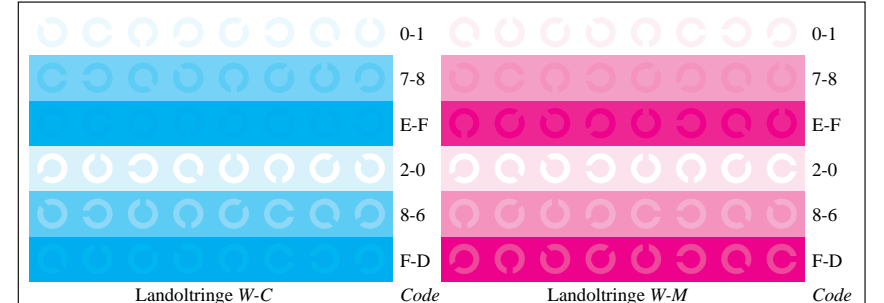


Bild B6: Landoltringe *W-C* und *W-M*; PS-Operator *cmY0\*/000n\* setcmYcolor*

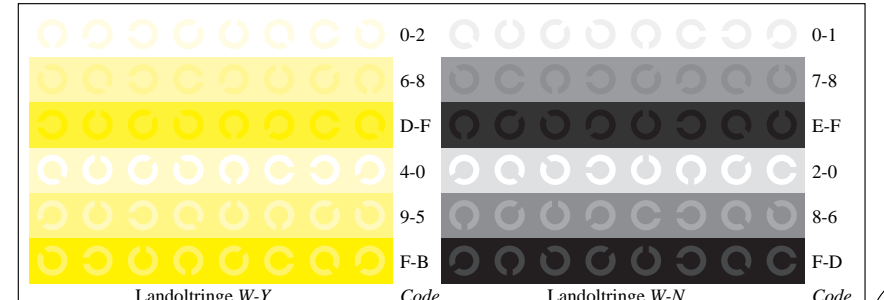


Bild B7: Landoltringe *W-Y* und *W-N*; PS-Operator *cmY0\*/000n\* setcmYcolor*