

Proposal: Test chart for yield and emission of colour toner modules and inkjet cartridges, PDF-Format
Date, Test person: 2004-05-01, Name
Driver adjustment
Paper:
Resolution:
Modus:

Driver version:
Test device type: unknown
Test device number:
Ink: black
coloured:

Test paper:
coloured:

www.ps.bam.de/BE11/10Q/Q11E00SP.PS/.PDF;
S: Output Linearization (OL) data BE11/10Q/Q11E00SP.DAT in Distiller Startup (S) Directory
224 mm (+/- 1 mm)



See for similar files: <http://www.ps.bam.de/BE11/>
Technical information: <http://www.ps.bam.de> Version 2.0, io=0,0?

Fig. 1: Colour area 14 mm x 14 mm; Yield / Emission: 40% geometrical colour area coverage and 65% colour coverage; PS operator: cmy0* / 000n* setcmycolor
BAM-test chart no. BE11 Step: S2 input: cmy0* / 000n* setcmycolor
Yield/Emission: 40% geometrical and 40% visual area coverage output: Startup (S) data dependend



224 mm (+/- 1 mm)

170 mm (+/- 1 mm)









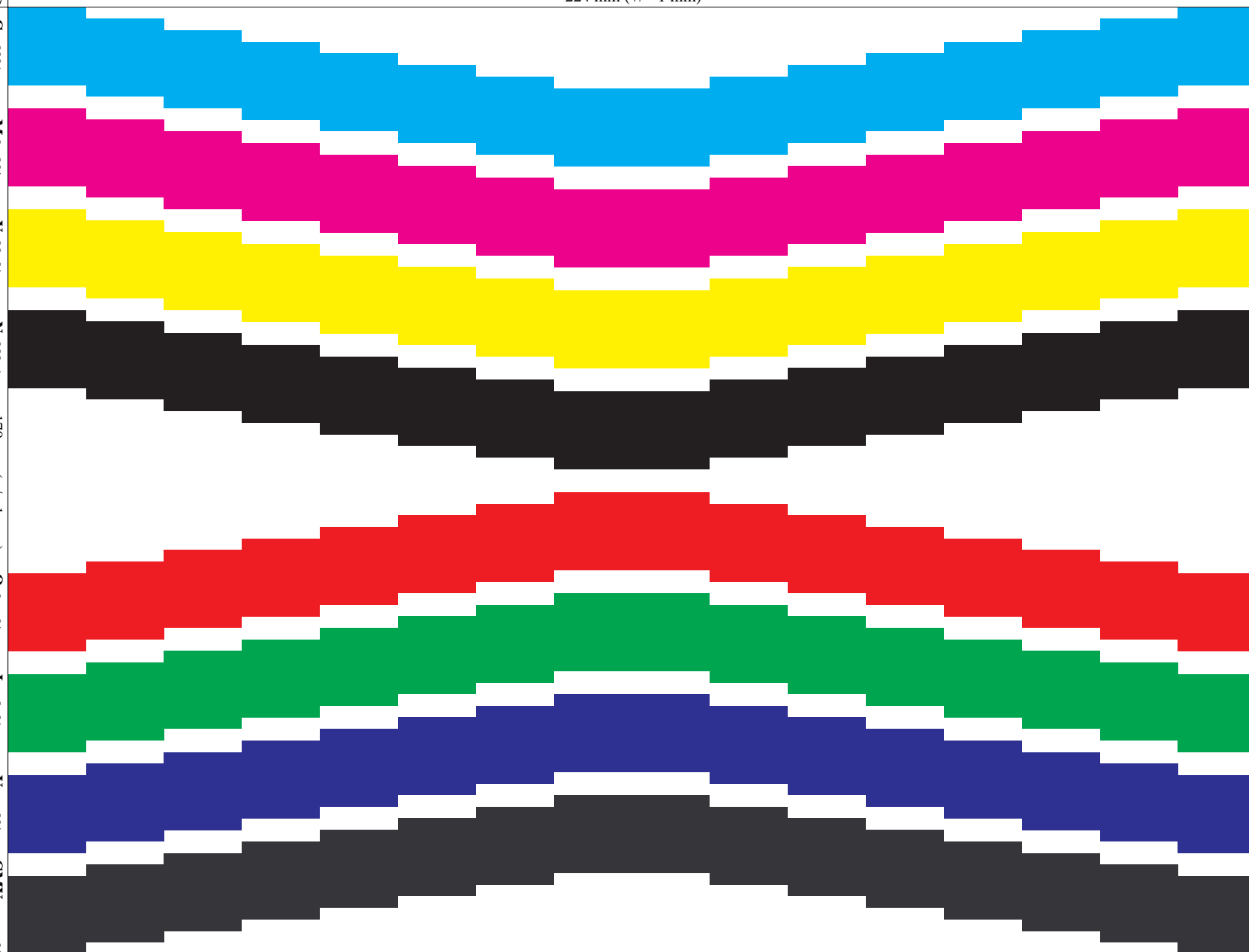






Proposal: Test chart for yield and emission of colour toner modules and inkjet cartridges, PDF-Format
 Date, Test person: 2004-05-01, Name
 Driver adjustment Paper:
 Resolution: Test device type: unknown
 Modus: Ink: black
 Test paper: coloured:

www.ps.bam.de/BE11/10Q/Q11E00SP.PS/.PDF;
 S: Output Linearization (OL) data BE11/10Q/Q11E00SP.DAT in Distiller Startup (S) Directory
 224 mm (+/- 1 mm)



See for similar files: <http://www.ps.bam.de/BE11/>
 Technical information: <http://www.ps.bam.de> Version 2.0, io=0,0?

Fig. 1: Colour area 14 mm x 14 mm; Yield / Emission: 40% geometrical colour area coverage and 65% colour coverage; PS operator: cmy0* / 000n* setcmycolor
 BAM-test chart no. BE11 Step: S2 input: cmy0* / 000n* setcmycolor
 Yield/Emission: 40% geometrical and 40% visual area coverage output: Startup (S) data dependend

224 mm (+/- 1 mm)

170 mm (+/- 1 mm)

