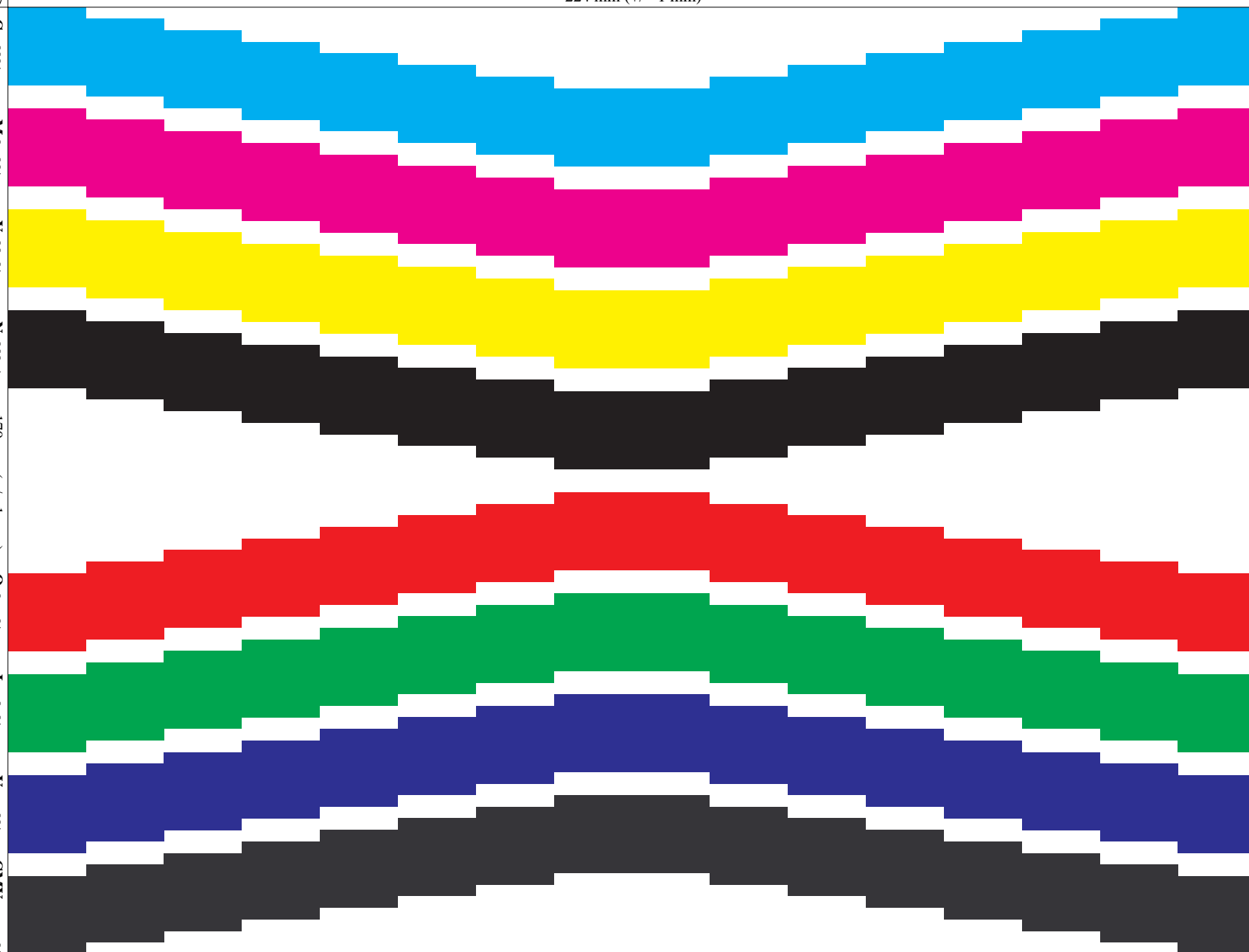


Proposal: Test chart for yield and emission of colour toner modules and inkjet cartridges, PDF-Format
Date, Test person: 2004-05-01, Name
Driver adjustment Paper:
Resolution: Test device type: unknown
Modus: Ink: black
Test paper: coloured:



www.ps.bam.de/BE11/10Q/Q11E00NP.PS/.PDF; start output
N: No Output Linearization (OL) data in File (F), Startup (S) or Device (D)
224 mm (+/- 1 mm)



See for similar files: <http://www.ps.bam.de/BE11/>
Technical information: <http://www.ps.bam.de> Version 2.0, io=0,0

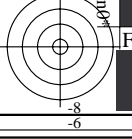
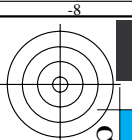


Fig. 1: Colour area 14 mm x 14 mm; Yield / Emission: 40% geometrical colour area coverage and 65% colour coverage; PS operator: cmy0* / 000n* setcmycolor
BAM-test chart no. BE11 Step: S1 input: cmy0* / 000n* setcmycolor
Yield/Emission: 40% geometrical and 40% visual area coverage output: no change compared to input

224 mm (+/- 1 mm)

170 mm (+/- 1 mm)















Proposal: Test chart for yield and emission of colour toner modules and inkjet cartridges, PDF-Format

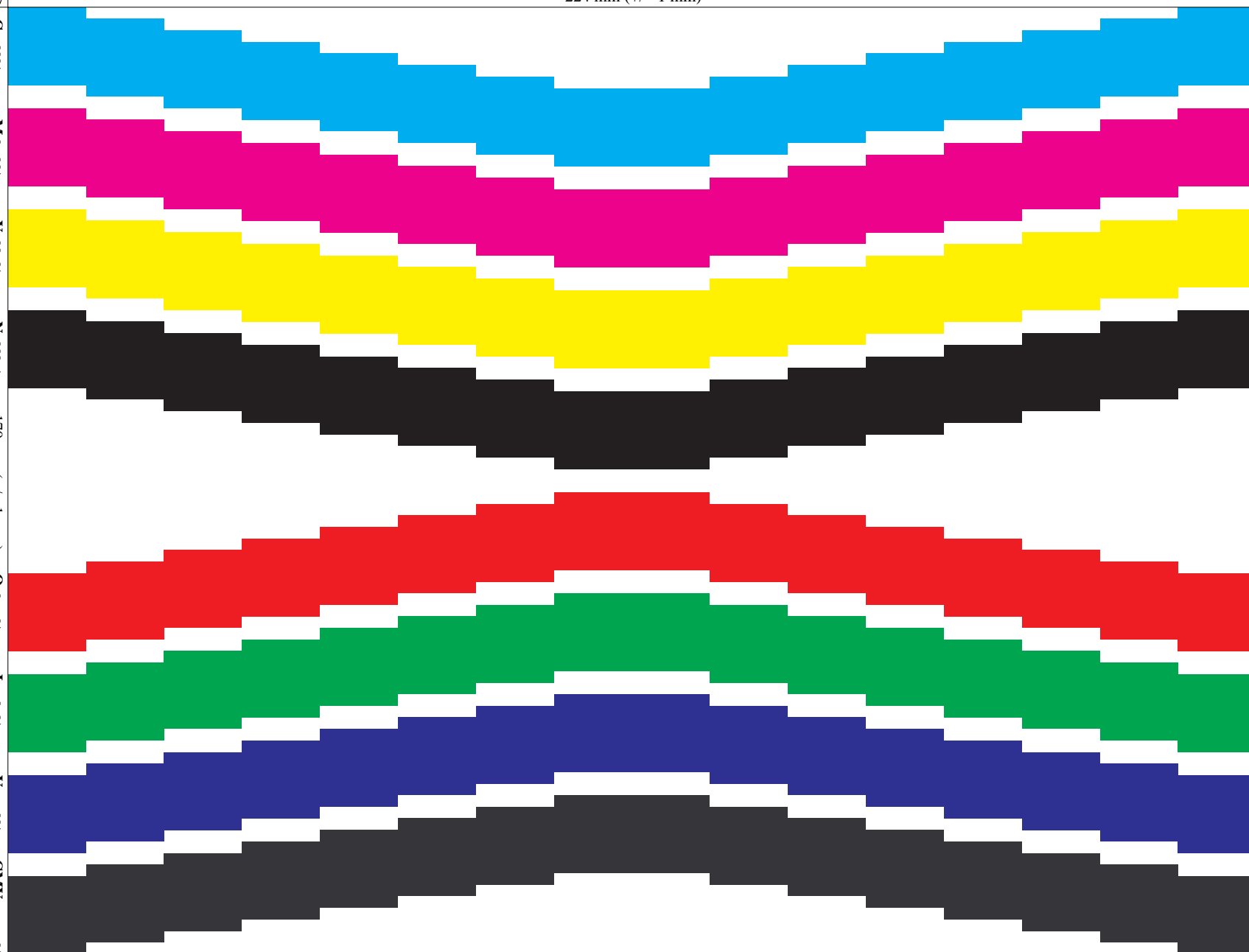
Date, Test person: 2004-05-01, Name
Driver adjustment Paper:
Resolution: Test device type: unknown
Modus: Ink: black
Test paper: coloured:

Driver version:

Test paper:



www.ps.bam.de/BE11/10Q/Q11E00NP.PS/.PDF; start output
N: No Output Linearization (OL) data in File (F), Startup (S) or Device (D)
224 mm (+/- 1 mm)



See for similar files: <http://www.ps.bam.de/BE11/>
Technical information: <http://www.ps.bam.de> Version 2.0, io=0,0

Fig. 1: Colour area 14 mm x 14 mm; Yield / Emission: 40% geometrical colour area coverage and 65% colour coverage; PS operator: cmy0* / 000n* setcmycolor



BAM-test chart no. BE11 Step: S1 input: cmy0* / 000n* setcmycolor
Yield/Emission: 40% geometrical and 40% visual area coverage output: no change compared to input



224 mm (+/- 1 mm)

170 mm (+/- 1 mm)













